



# STURGEON BUSINESS PARK

1115 - 1209 STURGEON CT & 1200 S COMMERCIAL BLVD | ARLINGTON, TX 76001

## AVAILABILITY

### MOVE IN READY

- Suite 1209 - 107: ± 5,906 SF
- Suite 1115 - 103 & 105: 6,000 SF
- Suite 1115 - 111: 3,000 SF
- Suite 1121 - 105: 2,511 SF
- Suite 1121 - 115 & 117: 5,022 SF

## HIGHLIGHTS

- Six Buildings Totaling 170,000 SF
- Professional Campus Setting
- Spec Suites Available
- Grade and Dock High Loading
- Close to Major Thoroughfares
- Zoned "IM" - Industrial Manufacturing
- Fully Sprinklered



MATT BLACKBURN  
817.502.8179  
MATT.BLACKBURN@STREAMREALTY.COM

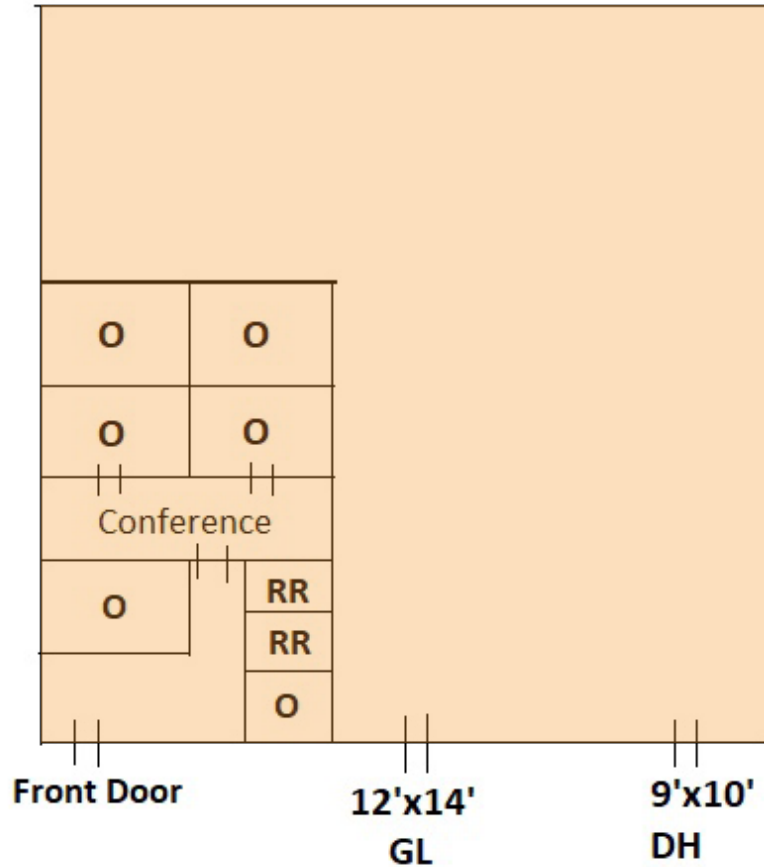
BRETT CARLTON  
817.502.8128  
BRETT.CARLTON@STREAMREALTY.COM



# STURGEON BUSINESS PARK

1115 - 1209 STURGEON CT & 1200 S COMMERCIAL BLVD | ARLINGTON, TX 76001

## SUITE 1209 - 107 | ± 5,906 SF, ± 1,000 SF OFFICE



### HIGHLIGHTS

- 5,906 SF
- +/-1,000 SF office
- Conference Room
- Two Restrooms
- One 12'x14' Grade Level Door
- One 9'x10' Dock High Door
- Sprinklered

MATT BLACKBURN  
817.502.8179  
MATT.BLACKBURN@STREAMREALTY.COM

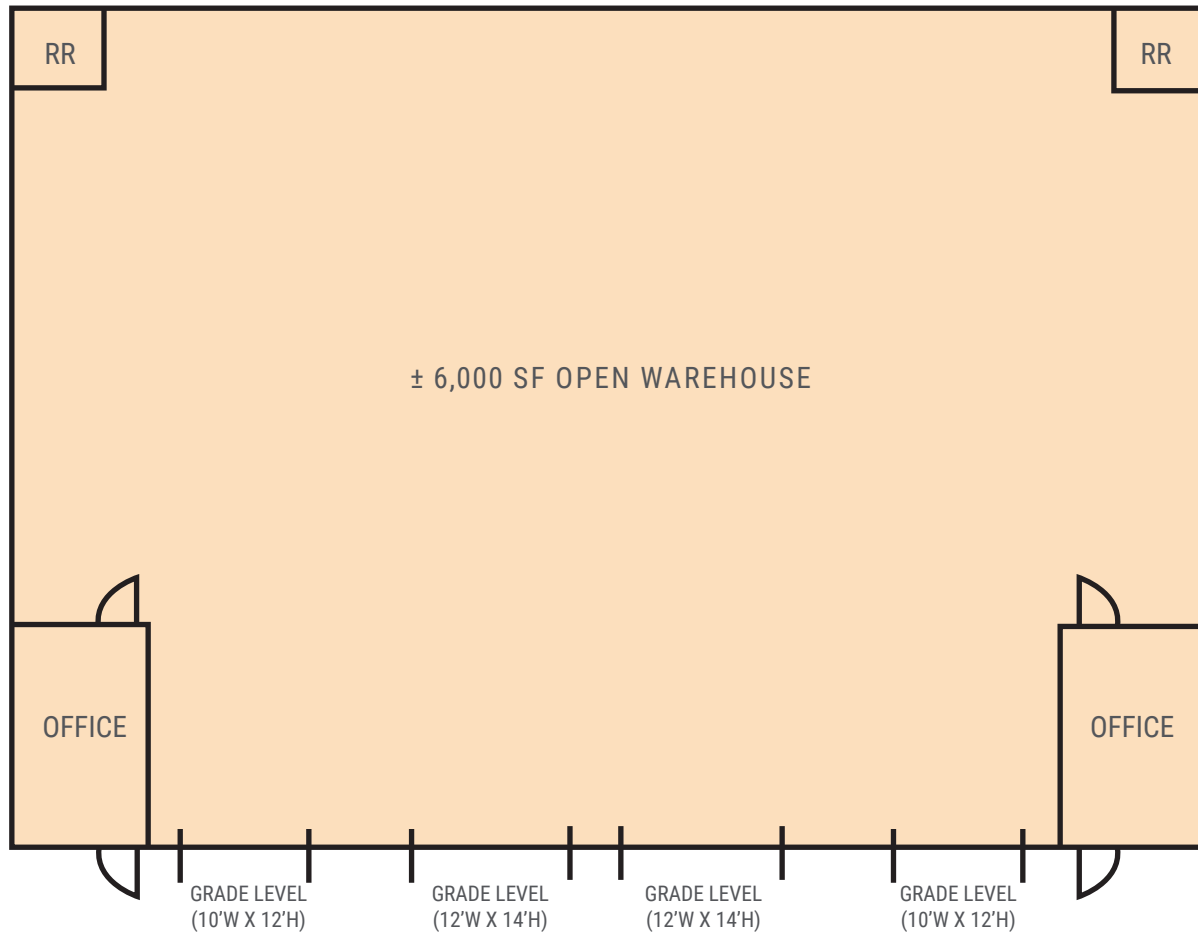
BRETT CARLTON  
817.502.8128  
BRETT.CARLTON@STREAMREALTY.COM

  
**STREAM**

# STURGEON BUSINESS PARK

1115 - 1209 STURGEON CT & 1200 S COMMERCIAL BLVD | ARLINGTON, TX 76001

## SUITE 1115 - 103 & 105 | ± 6,000 SF, ± 550 SF OFFICE



### HIGHLIGHTS

- ± 6,000 SF
- ± 550 SF Office
- Four (4) Grade Level Doors
- Two (2) Restrooms
- Sprinklered
- 16' - 19' Clear Height

MATT BLACKBURN  
817.502.8179  
MATT.BLACKBURN@STREAMREALTY.COM

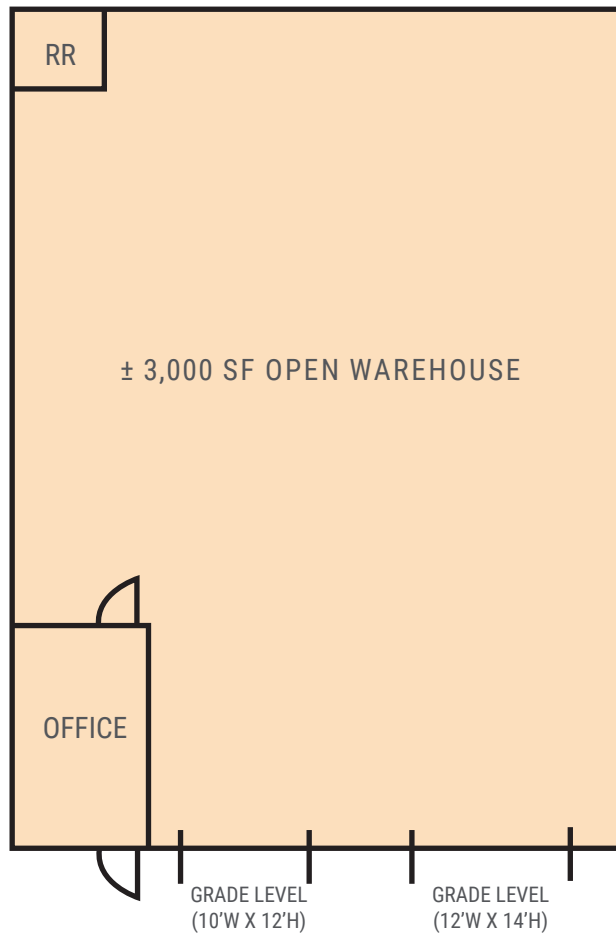
BRETT CARLTON  
817.502.8128  
BRETT.CARLTON@STREAMREALTY.COM

  
STREAM

# STURGEON BUSINESS PARK

1115 - 1209 STURGEON CT & 1200 S COMMERCIAL BLVD | ARLINGTON, TX 76001

## SUITE 1115 - 111 | $\pm$ 3,000 SF, $\pm$ 275 SF OFFICE



### HIGHLIGHTS

- $\pm$  3,000 SF
- $\pm$  275 SF Office
- Two (2) Grade Level Doors
- Two (2) Restrooms
- Sprinklered
- 16' - 19' Clear Height

MATT BLACKBURN  
817.502.8179  
MATT.BLACKBURN@STREAMREALTY.COM

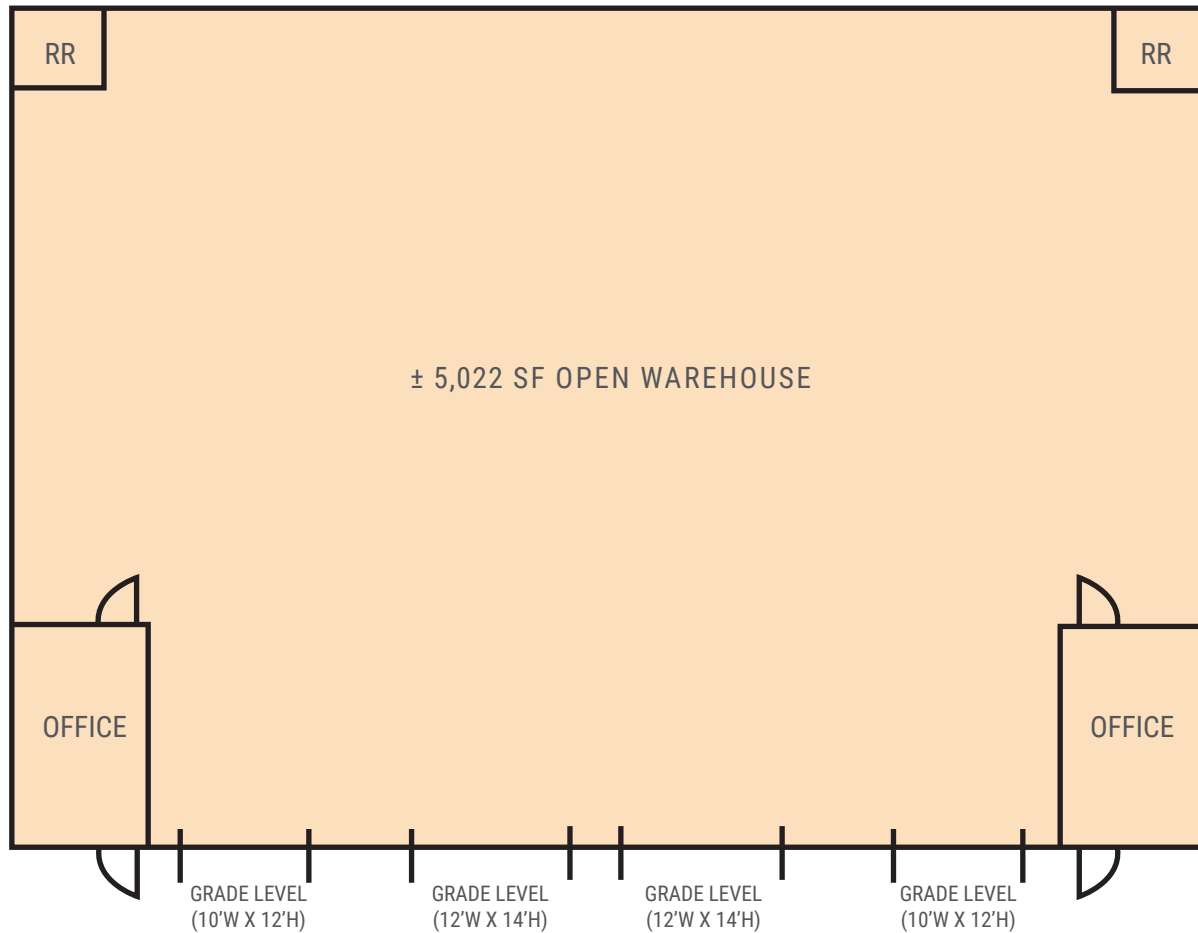
BRETT CARLTON  
817.502.8128  
BRETT.CARLTON@STREAMREALTY.COM

  
STREAM

# STURGEON BUSINESS PARK

1115 - 1209 STURGEON CT & 1200 S COMMERCIAL BLVD | ARLINGTON, TX 76001

## SUITE 1121 - 115 & 117 | ± 5,022 SF, ± 550 SF OFFICE



### HIGHLIGHTS

- ± 5,022 SF
- ± 550 SF Office
- Four (4) Grade Level Doors
- Two (2) Restrooms
- Sprinklered
- 16' - 19' Clear Height

MATT BLACKBURN  
817.502.8179  
MATT.BLACKBURN@STREAMREALTY.COM

BRETT CARLTON  
817.502.8128  
BRETT.CARLTON@STREAMREALTY.COM

  
STREAM

# STURGEON BUSINESS PARK

1115 - 1209 STURGEON CT & 1200 S COMMERCIAL BLVD | ARLINGTON, TX 76001

## SUITE 1121 - 105 | ± 2,511 SF, ± 275 SF OFFICE



### HIGHLIGHTS

- ± 2,511 SF
- ± 275 SF Office
- One (1) Grade Level Door
- One (1) Dock Door
- One (1) Restroom
- Sprinklered
- 16' - 19' Clear Height

MATT BLACKBURN  
817.502.8179  
MATT.BLACKBURN@STREAMREALTY.COM

BRETT CARLTON  
817.502.8128  
BRETT.CARLTON@STREAMREALTY.COM

  
STREAM