



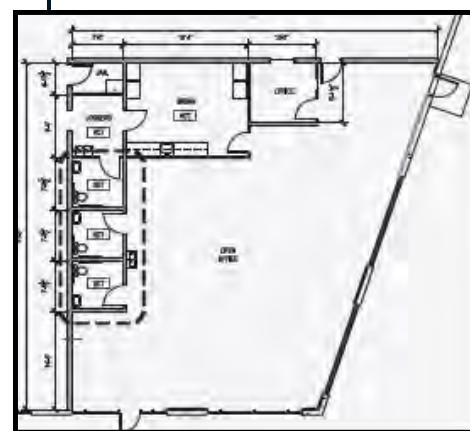
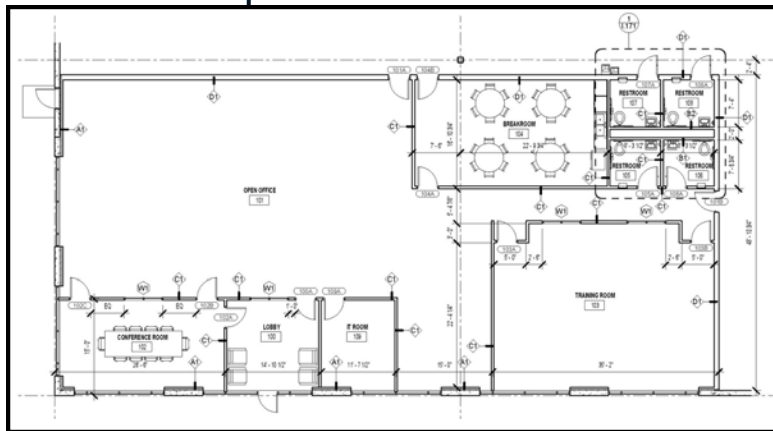
For lease

±225,211 SF

Georgia North Business Center | 95 International Parkway NW
Adairsville, GA 30103



Site plan



Property specifications

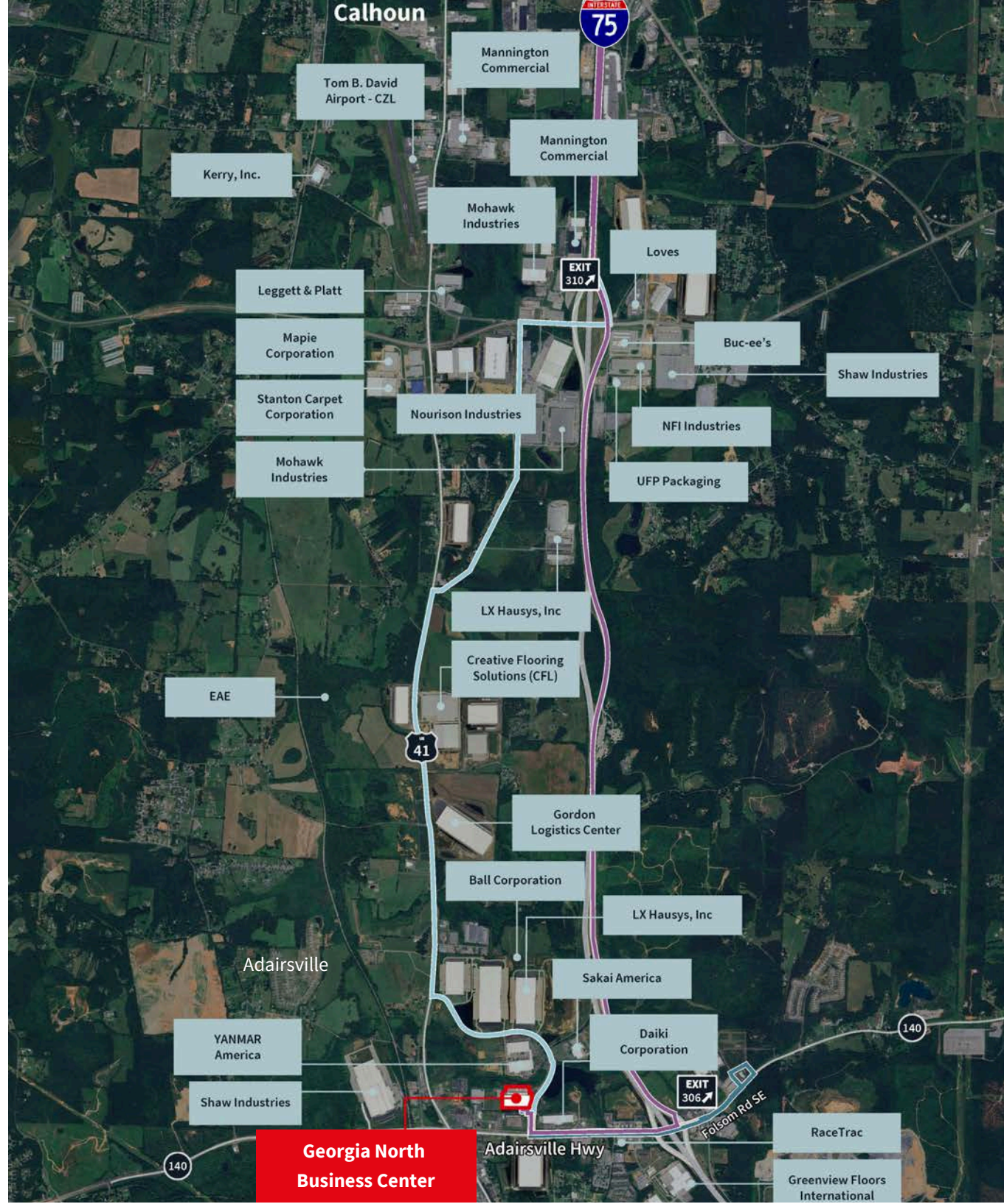
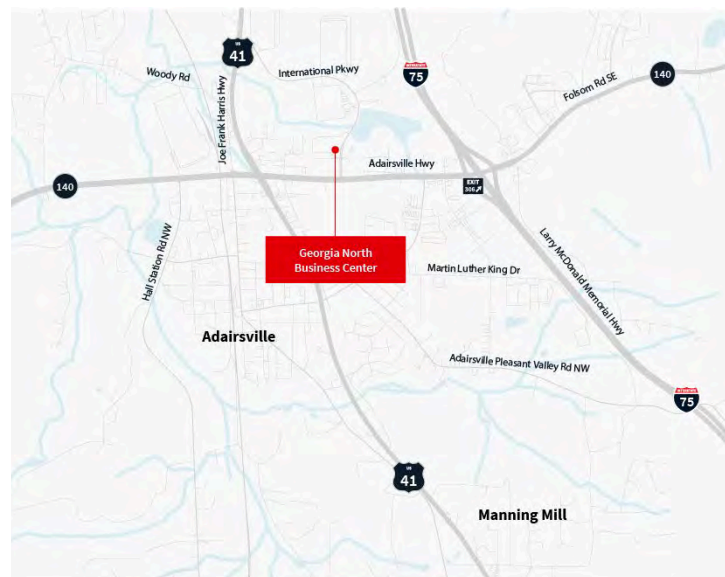
- Whole Building
 - Building size: +/- 225,211 s.f.
 - Building depth: 320'
 - Configuration: Rear load
 - Clear height: 32'
 - Truck court: 185'
 - Sprinkler: ESFR
 - Lighting: LED warehouse lights @ 25 FC
 - Trailer parking spaces: 50
 - Auto parking spaces: 128
 - Dock doors: 34
 - Drive-in doors: 2
- Suite 100
 - Available size: 100,960 s.f. (Suite 100)
 - Office size: 5,065 s.f.
 - Trailer parking spaces: 20
 - Dedicated tenant parking spaces: 58
 - Dock high doors: 13 (2 doors have 30,000 lb pit levelers)
 - Drive-in door: 1
- Suite 200
 - Available size: 124, 251 s.f. (Suite 200)
 - Office size: 2,435 s.f.
 - Trailer parking spaces: 30
 - Dedicated tenant parking spaces: 70
 - Dock high doors: 21(10 doors have 35,000 lb pit levelers)
 - Drive-in door: 1



Location proximity

- Interstate 75: 0.8 miles
- Chattanooga Metropolitan Airport: 56.8 miles
- Hartsfield Jackson Atlanta International Airport: 69.5 miles
- Norfolk Southern Atlanta Intermodal: 47.8 miles
- CSX Atlanta Intermodal: 77.2 miles
- Appalachian Regional Port: 42 miles
- Port of Savannah: 309 miles

Easy access to major transportation routes.





JLL

Reed Davis, SIOR

Executive Managing Director
Reed.Davis@jll.com
+1 404 995 2227

Brad Pope, SIOR

Executive Managing Director
Brad.Pope@jll.com
+1 404 995 2261

Austin Kriz, SIOR

Managing Director
Austin.Kriz@jll.com
+1 404 995 2238

Hannah Dillard

Associate
Hannah.Dillard@jll.com
+1 404 995 2250

Jones Lang LaSalle Americas, Inc.

For over 200 years, JLL (NYSE: JLL), a leading global commercial real estate and investment management company, has helped clients buy, build, occupy, manage and invest in a variety of commercial, industrial, hotel, residential and retail properties. A Fortune 500® company with annual revenue of \$20.9 billion and operations in over 80 countries around the world, our more than 103,000 employees bring the power of a global platform combined with local expertise. Driven by our purpose to shape the future of real estate for a better world, we help our clients, people and communities SEE A BRIGHTER WAY™. JLL is the brand name, and a registered trademark, of Jones Lang LaSalle Incorporated. For further information, visit [jll.com](https://www.jll.com).