

FOR LEASE
OFFICE BUILDING



THE LANDMARK BUILDING

34 MAIN STREET EXTENSION, PLYMOUTH, MA
02360

For More Information

DAVE ELLIS, SIOR

781.919.0800 X701

dave@ellisrealtyadvisors.com

KERRICK PIERCE

781.919.0800 X710

kpierce@ellisrealtyadvisors.com



THE LANDMARK BUILDING



PROPERTY DESCRIPTION

Picture yourself working from your new office in historic downtown Plymouth. Suites from 1,000 S.F to 5,000 S.F. overlooking Brewster Gardens and Plymouth Harbor, all in a newly renovated five-story office building.

The buildings exterior and interior have undergone a complete renovation with new building envelope and interior common areas with floor to ceiling glass in the lobby. There is on-site parking and overflow parking in two municipal parking lots adjacent to the building.

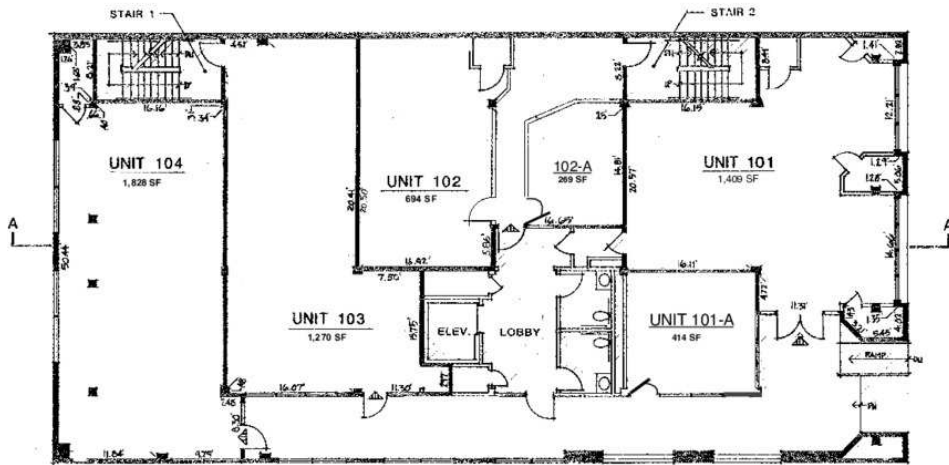
Come experience the newly renovated office suites featuring walls of frameless glass and class "A" finishes. Plymouth's newest and best office spaces are located in The Landmark building.

OFFERING SUMMARY

Lease Rate:	\$24.00 SF/yr (MG)
Number of Units:	24
Available SF:	414 - 1,409 SF
Building Size:	30,050 SF

DEMOGRAPHICS	1 MILE	3 MILES	5 MILES
Total Households	1,658	6,522	11,122
Total Population	3,666	15,627	28,497
Average HH Income	\$71,581	\$76,701	\$89,849

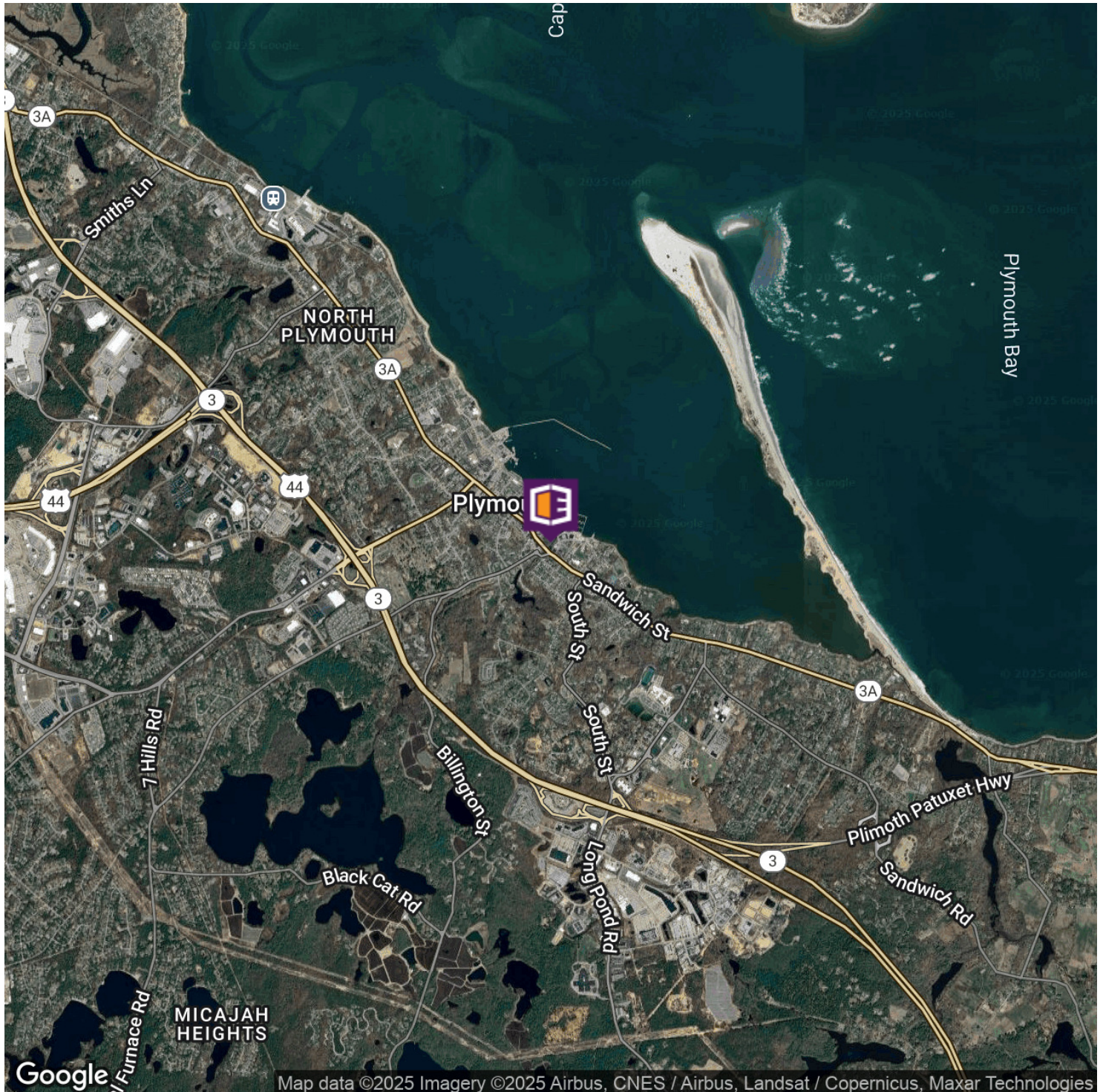
THE LANDMARK BUILDING



FIRST FLOOR PLAN

Unit measurements are for illustration purposes only, tenant field verify. Units are Gross SF not net

THE LANDMARK BUILDING



ADDITIONAL PHOTOS

THE LANDMARK BUILDING



DAVE ELLIS, SIOR

781.919.0800 x701
dave@ellisrealtyadvisors.com

KERRICK PIERCE

781.919.0800 x710
kpierce@ellisrealtyadvisors.com