



HOULIHAN LAWRENCE  
COMMERCIAL

# 500 Ashford Ave

Ardsey, NY 10502

Exclusively Represented By:

**Jared Stone**

Associate Broker

914 798 4900

[jstone@houlihanlawrence.com](mailto:jstone@houlihanlawrence.com)

**Garry Klein**

Houlihan Lawrence, Inc.

914 798 4900

[gklein@houlihanlawrence.com](mailto:gklein@houlihanlawrence.com)

OFFICE SPACE FOR LEASE

# 500 Ashford Ave

Ardsey, NY 10502

FOR LEASE

Executive Summary



Lease Rate

\$3,950.00 Per Month

## Property Overview

Klein Stone Commercial at Houlihan Lawrence exclusively represents approximately 1,000 SF of gorgeously renovated office space available for lease at 500 Ashford Ave, Ardsley, NY. This modern suite with private entrances is perfect for professional or medical tenants, and features high-end finishes and abundant natural light throughout. The property includes 19 dedicated parking spots, providing easy access for clients and staff alike. Located near major highways and a variety of local amenities, this space is ideal for businesses seeking a prestigious Westchester presence.

## Offering Summary

Lease Type	Gross
Size	1,000 SF
Utilities	Electric, Gas, Water Included

### Jared Stone

Associate Broker  
914 798 4900  
jstone@houlihanlawrence.com

### Garry Klein

Houlihan Lawrence, Inc.  
914 798 4900  
gklein@houlihanlawrence.com

### Houlihan Lawrence

800 Westchester Ave. Ste. N505  
Rye Brook, NY 10573



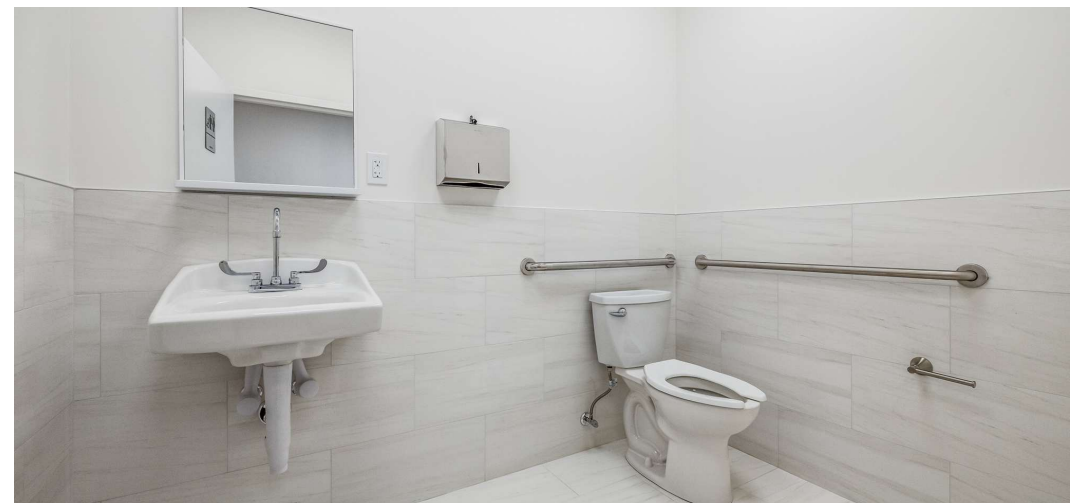
HOULIHAN LAWRENCE  
COMMERCIAL

# 500 Ashford Ave

Ardsey, NY 10502

FOR LEASE

Additional Photos



## Jared Stone

Associate Broker  
914 798 4900  
jstone@houlihanlawrence.com

## Garry Klein

Houlihan Lawrence, Inc.  
914 798 4900  
gklein@houlihanlawrence.com

## Houlihan Lawrence

800 Westchester Ave. Ste. N505  
Rye Brook, NY 10573



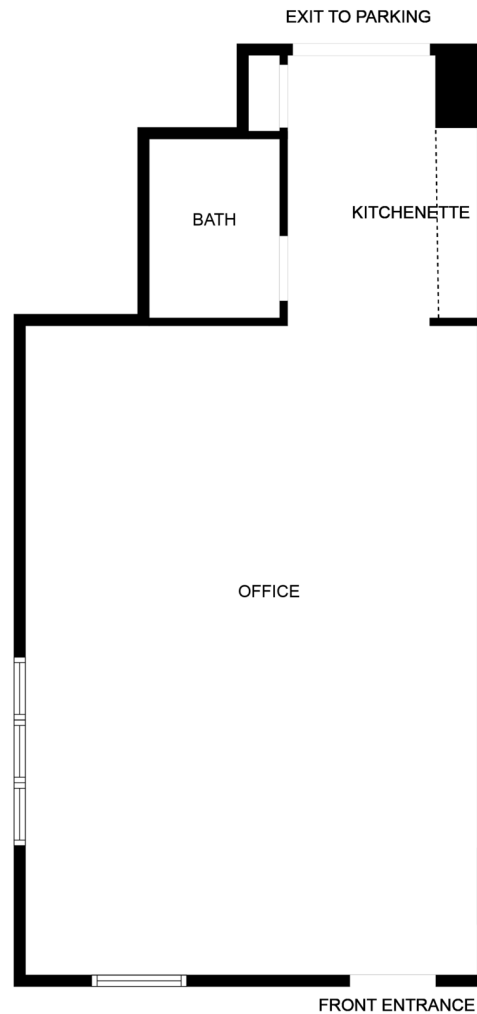
HOULIHAN LAWRENCE  
COMMERCIAL

# 500 Ashford Ave

Ardsey, NY 10502

FOR LEASE

Floor Plans



## Jared Stone

Associate Broker  
914 798 4900  
jstone@houlihanlawrence.com

## Garry Klein

Houlihan Lawrence, Inc.  
914 798 4900  
gklein@houlihanlawrence.com

## Houlihan Lawrence

800 Westchester Ave. Ste. N505  
Rye Brook, NY 10573



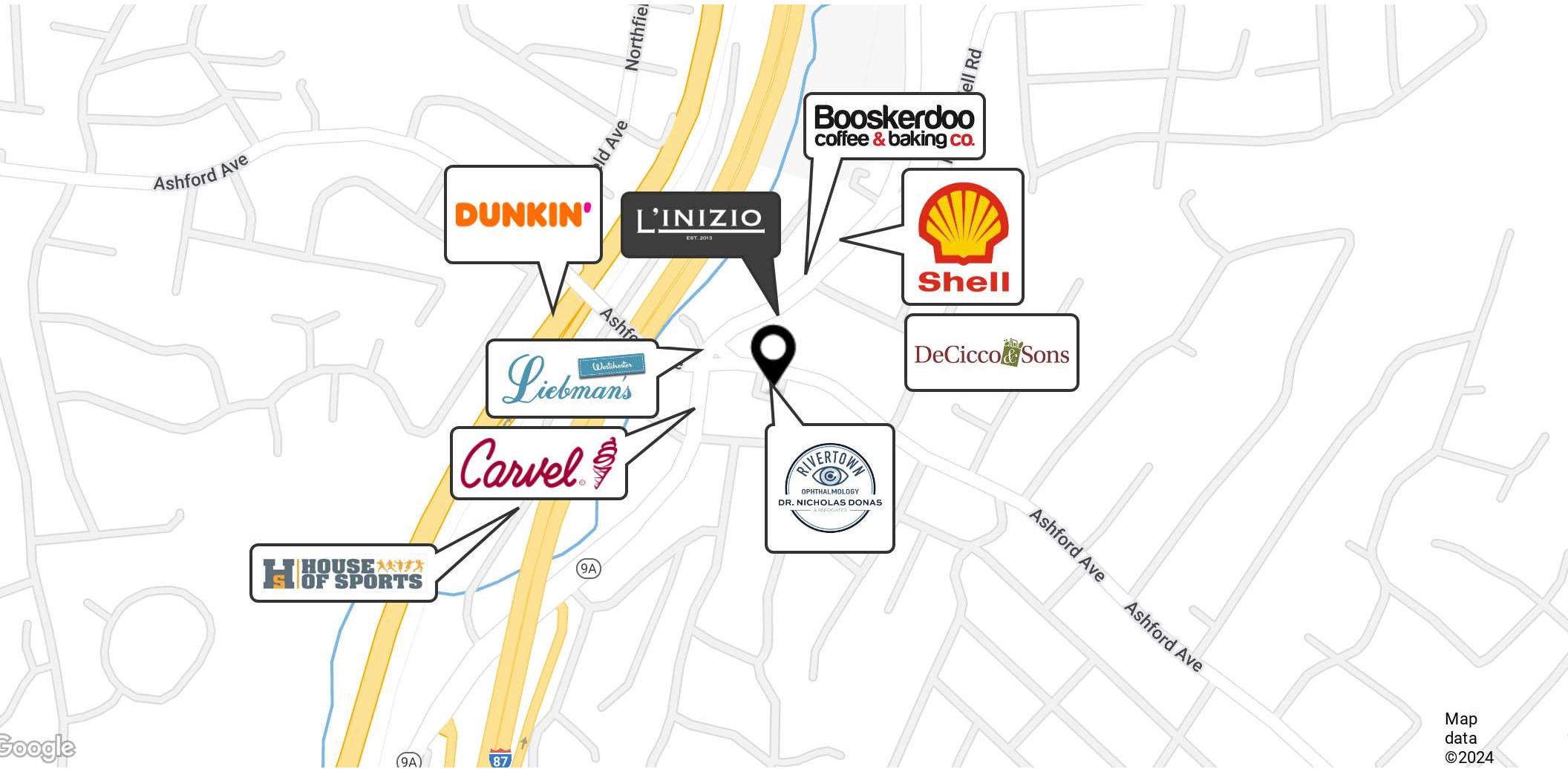
HOULIHAN LAWRENCE  
COMMERCIAL

# 500 Ashford Ave

Ardsey, NY 10502

FOR LEASE

Retailer Map



Map data ©2024

## Jared Stone

Associate Broker  
914 798 4900  
jstone@houlihanlawrence.com

## Garry Klein

Houlihan Lawrence, Inc.  
914 798 4900  
gklein@houlihanlawrence.com

## Houlihan Lawrence

800 Westchester Ave. Ste. N505  
Rye Brook, NY 10573



HOULIHAN LAWRENCE  
COMMERCIAL

# 500 Ashford Ave

Ardsey, NY 10502

FOR LEASE

Additional Photos



## Jared Stone

Associate Broker  
914 798 4900  
jstone@houlihanlawrence.com

## Garry Klein

Houlihan Lawrence, Inc.  
914 798 4900  
gklein@houlihanlawrence.com

## Houlihan Lawrence

800 Westchester Ave. Ste. N505  
Rye Brook, NY 10573



HOULIHAN LAWRENCE  
COMMERCIAL

# 500 Ashford Ave

Ardsley, NY 10502

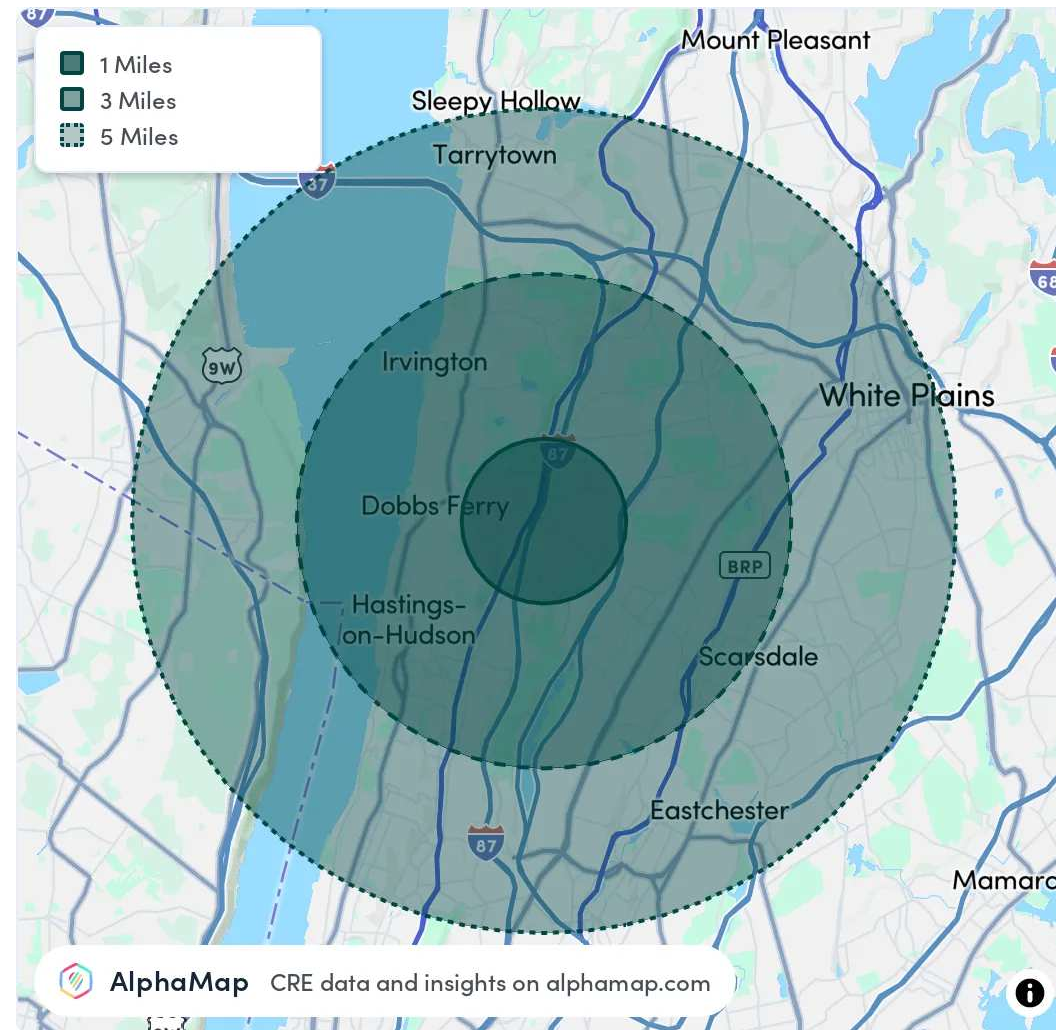
FOR LEASE

Area Analytics

Population	1 Mile	3 Miles	5 Miles
Total Population	11,486	81,929	290,344
Average Age	41	43	43
Average Age (Male)	39	42	41
Average Age (Female)	43	45	44

Household & Income	1 Mile	3 Miles	5 Miles
Total Households	3,939	30,462	109,405
Persons per HH	2.9	2.7	2.7
Average HH Income	\$247,813	\$234,395	\$190,776
Average House Value	\$884,505	\$921,059	\$800,265
Per Capita Income	\$85,452	\$86,812	\$70,657

Map and demographics data derived from AlphaMap



**Jared Stone**  
Associate Broker  
914 798 4900  
jstone@houlihanlawrence.com

**Garry Klein**  
Houlihan Lawrence, Inc.  
914 798 4900  
gklein@houlihanlawrence.com

**Houlihan Lawrence**  
800 Westchester Ave. Ste. N505  
Rye Brook, NY 10573



  
**HOULIHAN LAWRENCE**  
COMMERCIAL