

2101 4th Ave East

Shakopee, MN

Key Facts

Property type	Industrial space
---------------	------------------

Building size	374,700 SF
---------------	------------

Space available	374,700 SF
-----------------	------------



Contact Us

Learn more about this property or schedule a tour by reaching out to our local investment and leasing officer.

Alex Olsen

+1 (380) 799-0452

alex.olsen@eqtpartners.com

2101 4th Ave East

Shakopee, MN

Building Specifications

374,700 SF Available

358,536 SF Warehouse (96%)

16,164 SF Office (4%)

Year Built 2017

Site Area (Acres) 24.1

FAR 0.36

Clear Height 32'

Dock Doors 39

Drive-in Doors 3

Building Dimensions 310' depth x 1,210' length

Loading Configuration Front

Truck Court Depth 130'

Car Parking +/- 401

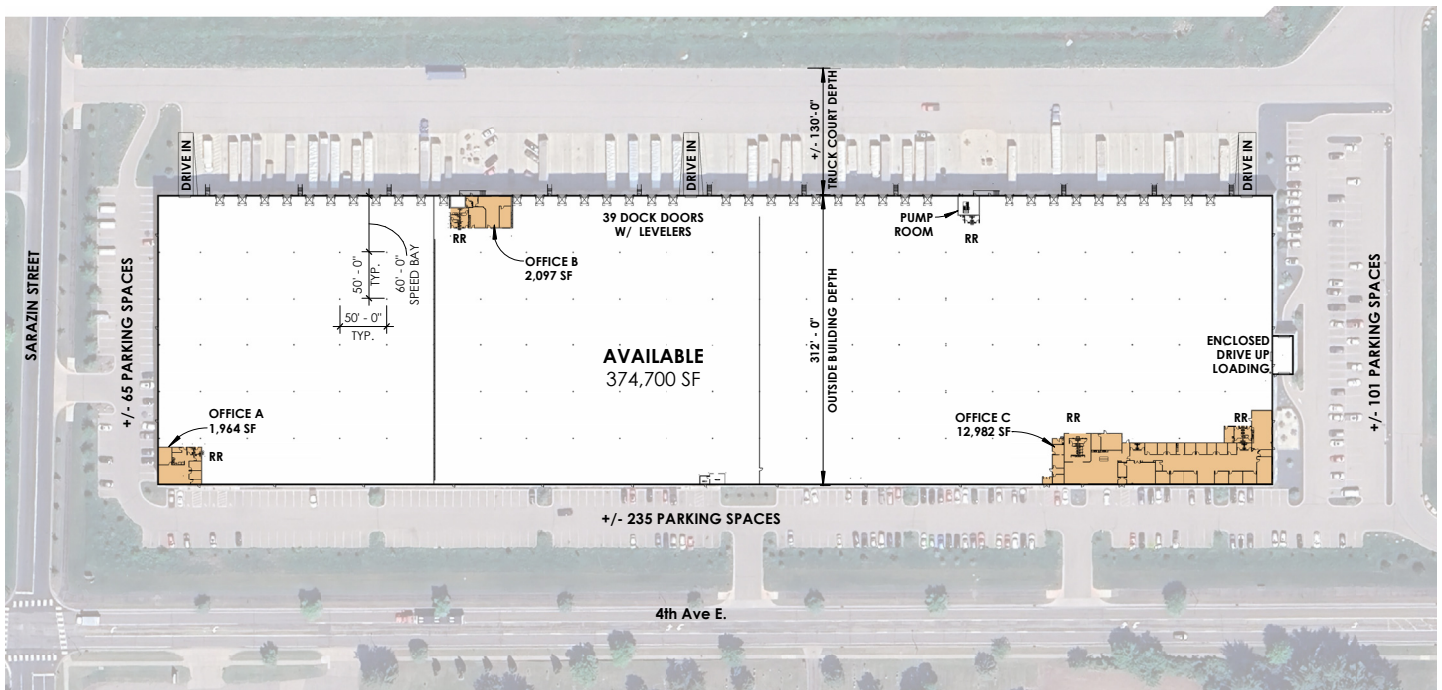
Power 4,000 AMP; 277/480V

Exterior Walls Tilt-Up Concrete

Roof Type EPDM

ESFR Fire Protection

LED Lighting



Contact Us

Learn more about this property or schedule a tour by reaching out to our local investment and leasing officer.

Alex Olsen

+1 (380) 799-0452

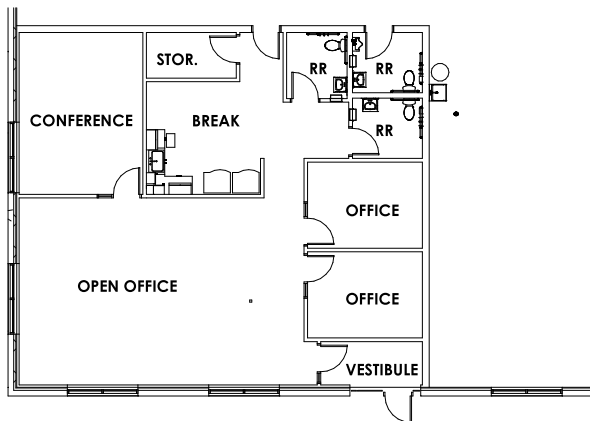
alex.olsen@eqtpartners.com

2101 4th Ave East

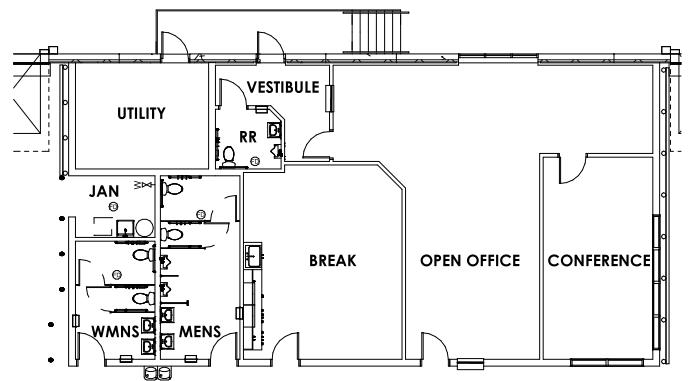
Shakopee, MN

OFFICE PLAN

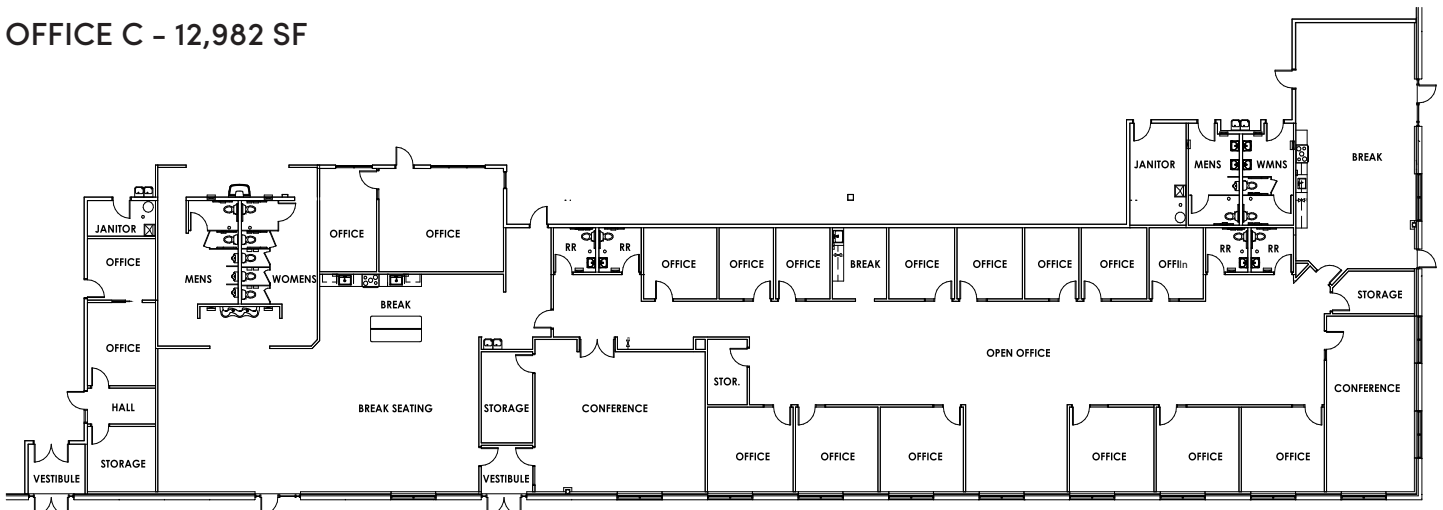
OFFICE A - 1,964 SF



OFFICE B - 2,097 SF



OFFICE C - 12,982 SF



Contact Us

Learn more about this property or schedule a tour by reaching out to our local investment and leasing officer.

Alex Olsen

+1 (380) 799-0452

alex.olsen@eqtpartners.com