

950 Riverside Parkway, Suite 70

WEST SACRAMENTO, CA



FOR LEASE

AVAILABLE
±3,820 Square Feet

For further information,
please contact our exclusive agents:

Kevin Jasper, SIOR
Senior Managing Director
916.826.7276
kevin.jasper@nrmk.com
CA RE License #01164925

Sean Mahoney, SIOR
Senior Managing Director
916.952.5750
sean.mahoney@nrmk.com
CA RE License #01332661

Suite 70

- ±1,348 SF of Existing Office Space
- One (1) Grade Level Door
- Heavy Power Available
- Prominent Frontage on Riverside Parkway
- Access to Common Dock

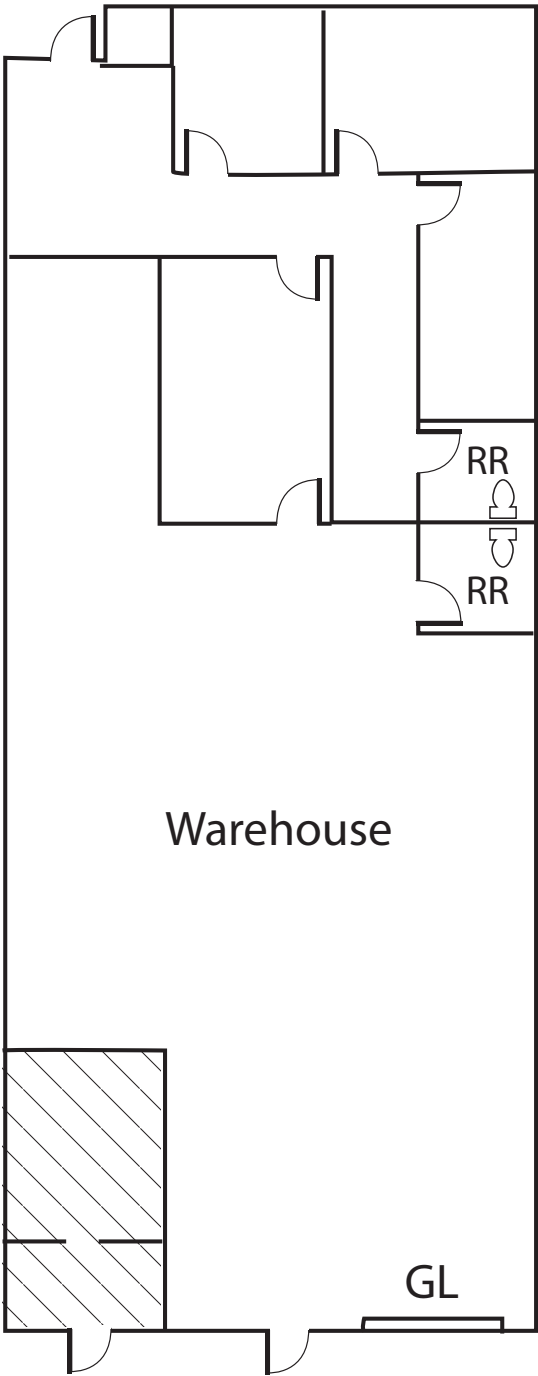
Building Features

- High-image Business Park
- ±18' Clear Height
- Fully sprinkled (0.6 GPM/2,000 SF Per Calc Plate)
- Ample parking (2.57 per 1,000 SF ratio)
- Flexibe BP Zoning
- Site plan & floor plan on reverse



980 Ninth Street, Suite 2500, Sacramento, CA 95814 nrmk.com

FLOOR PLAN



GL = Grade Level Loading

For further information, please contact our exclusive agents:

Kevin Jasper, SIOR	916.826.7276	kevin.jasper@nrmk.com
Sean Mahoney, SIOR	916.952.5750	sean.mahoney@nrmk.com

CA RE License #01164925
CA RE License #01332661

NEWMARK


Schnitzer
PROPERTIES

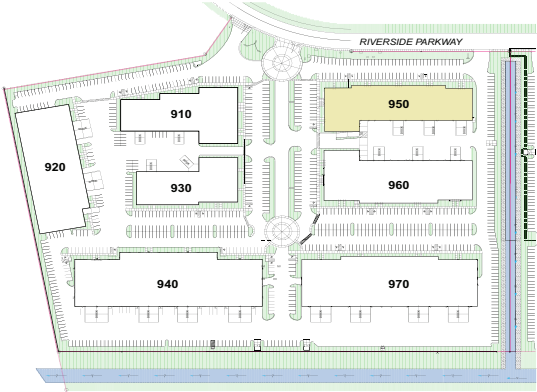
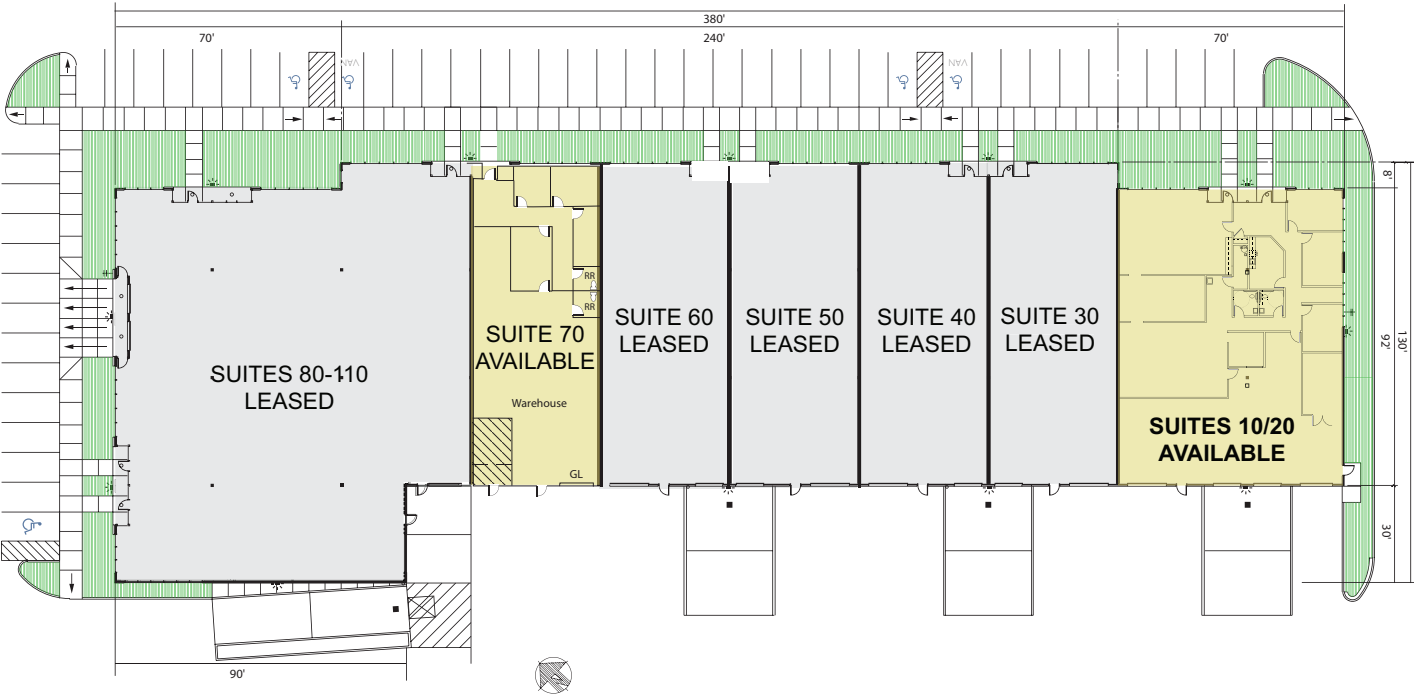
980 Ninth Street, Suite 2500, Sacramento, CA 95814 nrmk.com

950 Riverside Parkway, Suite 70

WEST SACRAMENTO, CA



SITE PLAN



For further information, please contact our exclusive agents:

Kevin Jasper, SIOR	916.826.7276	kevin.jasper@nmrk.com
Sean Mahoney, SIOR	916.952.5750	sean.mahoney@nmrk.com

CA RE License #01164925
CA RE License #01332661

NEWMARK



980 Ninth Street, Suite 2500, Sacramento, CA 95814 nmrk.com

The distributor of this communication is performing acts for which a real estate license is required. The information contained herein has been obtained from sources deemed reliable but has not been verified and no guarantee, warranty or representation, either express or implied, is made with respect to such information. Terms of sale or lease and availability are subject to change or withdrawal without notice.