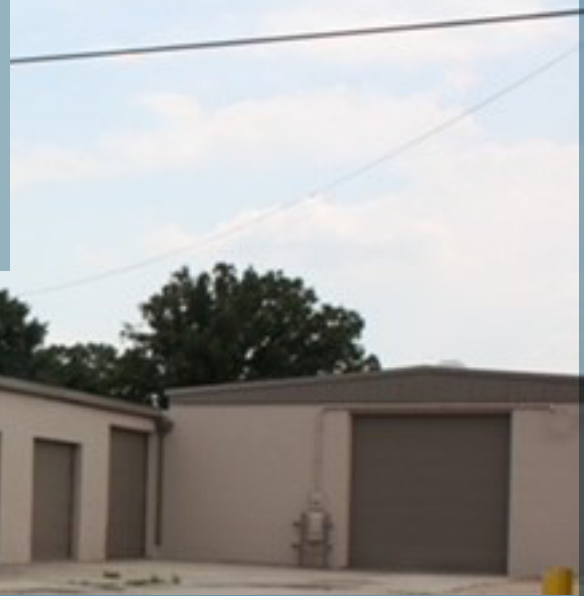


1120 Lafayette Street FOR LEASE

Gretna, Louisiana 70053

3,171 sf. Office 8,000 sf Warehouse
\$8,500/month NN

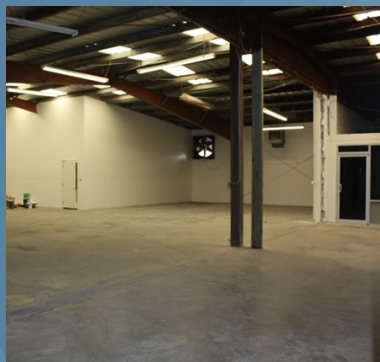
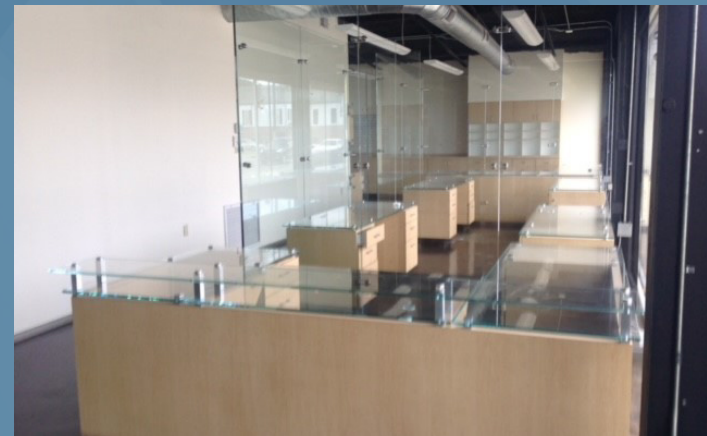


Located at 1120 Lafayette Street, Gretna LA, one block from U.S. Hwy 90, and just 15 minutes from downtown New Orleans, LA.

Front Office facade is entirely sleek black glass with EIGHT (8) Lined Parking Spaces with fully paved exterior storage yard for parking. Must See to Appreciate.

Rare, high-quality main office space with frosted glass partitions, tile, sealed concrete floors, built-in cabinetry, storage, desks, and tables which are included in the lease.

Impressive reception and conference room, two (2) executive offices, with six (6) additional offices and an area for large kitchen as well as Three (3) Bathrooms



Marcia Reck
(504) 453-5828
1120lafayette@gmail.com

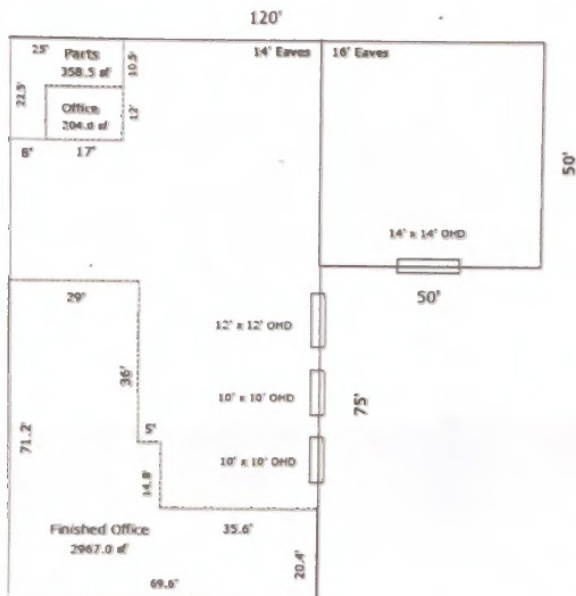
Offered by: GMG HOLDINGS L.L.C.



Property is situated on concrete slab foundation and features steel and masonry framed construction, painted cinderblock exterior and pitched corrugated metal roof. The L-shaped configuration has 5500 Sq. Ft. of warehouse space behind the main office with 14' eaves and the 50' x 50' warehouse space in the rear has 16' eaves.

Access to all warehouse space is provided by (2) 10' x 10' Overhead Doors 1 12' x 12' Overhead Door and (1) 14' x 14' Overhead Door. 110V and 220V electrical.

Gross Building Area: 11250.0 sf



FRONT OF BUILDING- 1120 LAFAYETTE STREET GRETN, LA.70053

CONFIGURATION FLOOR PLAN OF OFFICE AND WAREHOUSE LAYOUT. ENTIRE SITE IS PAVED CONCRETE. 42 ACRES.EASY ACCESS TO ALL WAREHOUSE AREA.



Marcia Reck
(504) 453-5828
1120lafayette@gmail.com

Offered by: GMG HOLDINGS L.L.C.



Conference room with executive desk and seating areas as well as built-in desks in several offices ready to use make for an easy transition.



Marcia Reck
(504) 453-5828
1120lafayette@gmail.com

Offered by: GMG HOLDINGS L.L.C.