

THIS DOCUMENT IS PROPERTY OF CORRALES GROUP, P.A. AND NO PART HEREIN SHALL BE USED EXCEPT FOR THE PROJECT'S PROJECT WITHOUT CONSENT OF CORRALES GROUP ARCHITECTS, P.A.
 THIS DOCUMENT WAS PREPARED BY CORRALES GROUP ARCHITECTS, P.A. ACCORDING TO THE TERMS OF THE CONTRACT. THIS DOCUMENT DOES NOT EITHER IN WHOLE OR IN PART CONSTITUTE ANY DESIGN OR INSTRUCTION TO ANY CONTRACTOR WITH REGARD TO CONSTRUCTION MEANS, METHODS OR TECHNIQUES. BY THIS DOCUMENT THE ARCHITECT DOES NOT INTEND TO EXPRESS ANY DESIGN, SPECIFICATION OR INSTRUCTION WHICH THE CONSTRUCTION WORK IS TO BE ACCOMPLISHED.

REVISIONS:

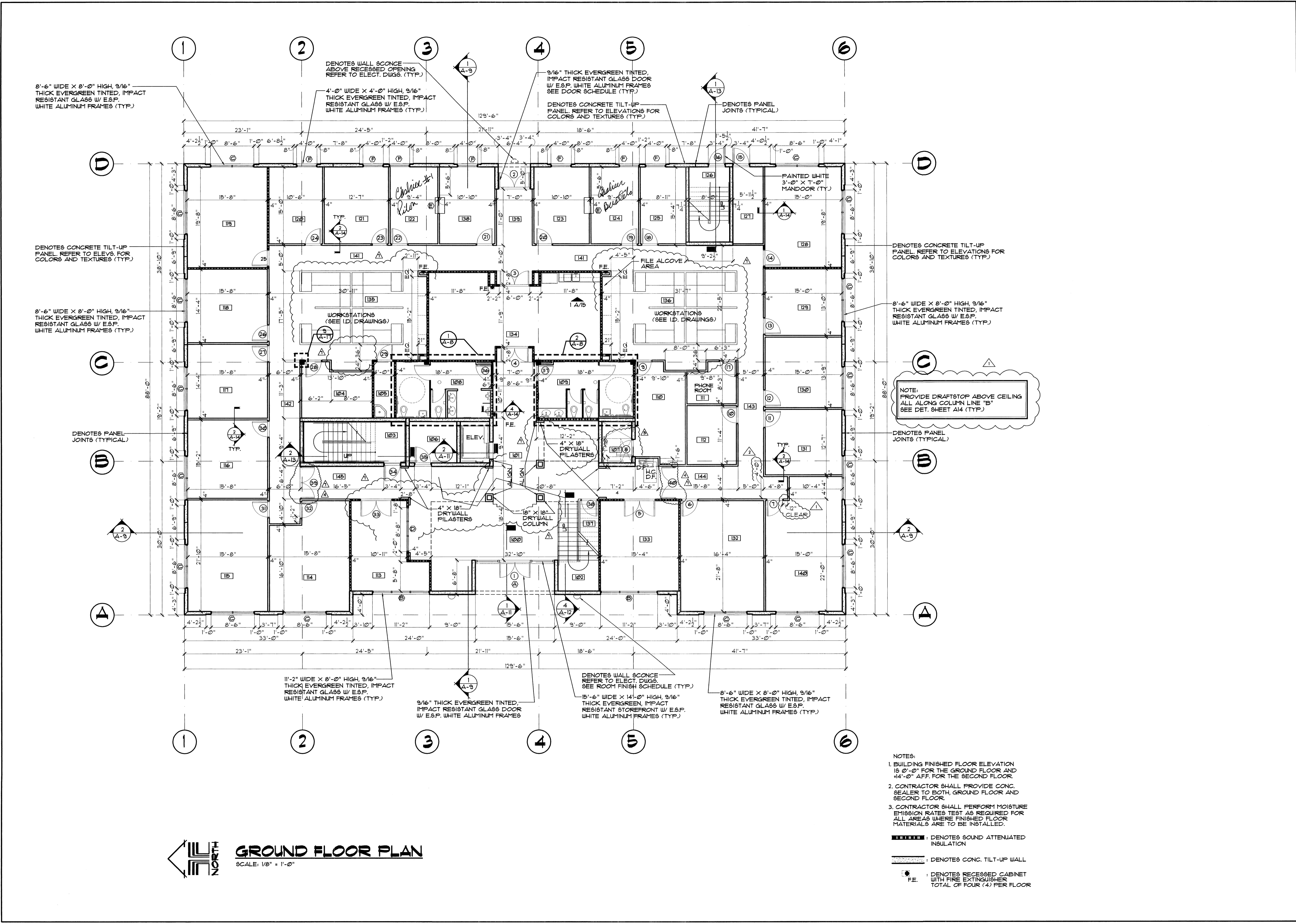
- 1 BLDG. DEPT. COMMENTS 9/21/00
- 2 BLDG. DEPT. COMMENTS 10/25/00
- 4 BLDG. DEPT. COMMENTS 4/10/01
- 5 COORDINATION 4/23/01
- 6 INTERIOR DESIGN CHANGES 10/30/01
- 7 INTERIOR DESIGN REVISIONS 11/14/01

corrales group architects
 2300 corporate blvd. n.w., suite 145
 boca raton, florida 33431 (407) 995-6700

Project
ROWLAND COFFEE ROASTERS, INC. HEADQUARTER OFFICES IN MIAMI, FLORIDA

SHEET TITLE
GROUND FLOOR PLAN

Date: 7/3/00 Sheet No.
 Project No. 00026 **A-2**
 Sheet 2 of 20



GROUND FLOOR PLAN
 SCALE: 1/8" = 1'-0"

- NOTES:
- BUILDING FINISHED FLOOR ELEVATION IS 0'-0" FOR THE GROUND FLOOR AND 4'-0" AFF. FOR THE SECOND FLOOR.
 - CONTRACTOR SHALL PROVIDE CONC. SEALER TO BOTH, GROUND FLOOR AND SECOND FLOOR.
 - CONTRACTOR SHALL PERFORM MOISTURE EMISSION RATES TEST AS REQUIRED FOR ALL AREAS WHERE FINISHED FLOOR MATERIALS ARE TO BE INSTALLED.
- DENOTES SOUND ATTENUATED INSULATION
 DENOTES CONC. TILT-UP WALL
 DENOTES RECESSED CABINET WITH FIRE EXTINGUISHER TOTAL OF FOUR (4) PER FLOOR