



# FOR LEASE

■ 10570 S US Highway 1

10570 S US Highway 1

Port Saint Lucie, FL 34952

## PROPERTY OVERVIEW

Private Suites! Location, Location, Location! Best location along the US1 corridor in Port St Lucie, just 2.62 miles south of the Crosstown Parkway. The 3-story professional office building is a landmark property with marquee signage available. Excellent location with ample parking. Only 1 suite left!

## OFFERING SUMMARY

Building Size:	21,899 SF
Land Size:	1.78 Acres
Zoning:	General Commercial (CG) - St. Lucie County
Utilities:	Water/Trash - City of Port St Lucie
Available SF:	1,295 SF



**CHRISTINE M. SKURKA**

VICE PRESIDENT/BROKER  
Mobile 772.359.7199  
skurka@slccommercial.com

772.220.4096 | [slccommercial.com](http://slccommercial.com)

LEASE RATE

\$18.00 SF/yr (NNN)



**SLC Commercial**  
Realty & Development



# Property Details

3 STORY LANDMARK OFFICE BUILDING

FOR LEASE

## LEASE RATE

\$18.00 SF/YR NNN

### Building Information

Building Size	21,899 SF
Tenancy	Multiple
Year Built	1989
Last Renovated	2016
Gross Leasable Area	2,490 SF
Condition	Good
Free Standing	Yes
Construction Description	Stucco over Concrete Block
Building Class	B
Number Of Floors	3

### Location Information

Street Address	10570 S US Highway 1
City, State, Zip	Port Saint Lucie, FL 34952
County/Township	Saint Lucie/37S
Cross Streets	S. US Highway 1 & SE Port St. Lucie Blvd.
Side Of Street	East
Signal Intersection	Yes
Nearest Highway	Florida Turnpike

### Location Overview

Northeast corner of S. US Highway 1 and SE Port St. Lucie Blvd.

### Utilities & Amenities

Number Of Elevators	1
Central HVAC	Yes

### Parking & Transportation

Street Parking	Yes
Parking Type	Surface
Parking Description	Ample

### Property Details

Property Type	Office
Property Subtype	Office Building
Lot Size	1.78 Acres
APN#	3414-501-4713-300-0
Corner Property	Yes
Utilities & Amenities	Water/Trash - Port St Lucie

### Zoning / Land Use Details

Zoning	General Commercial (CG) - St. Lucie County
Permitted Use	See Below

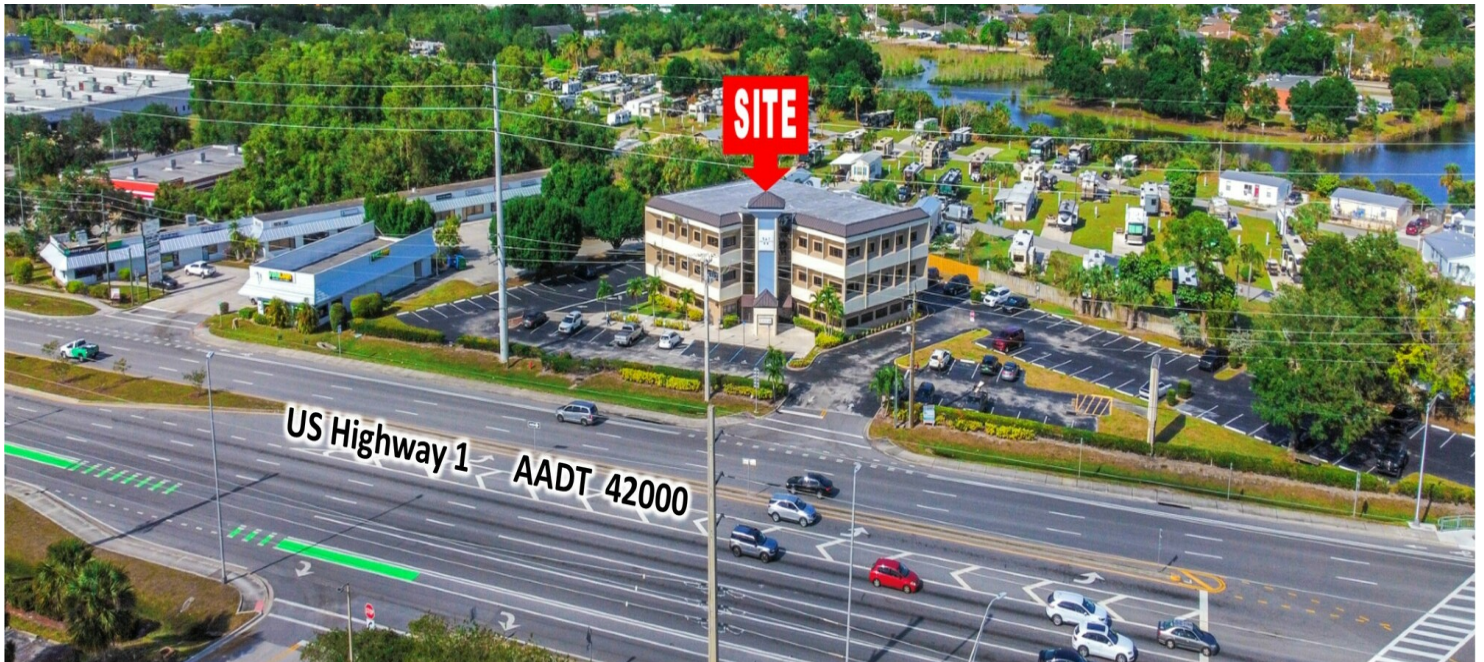
[Click Here For Permitted Uses](#)



# Available Spaces

3 STORY LANDMARK OFFICE BUILDING

FOR LEASE



## Suite 101

\$18.00 SF/yr

NNN

1,295 SF

Negotiable

Ground floor office with a reception/ work area, nice finishes with an open bullpen at the rear of the suite with lots of windows and plenty of cabinet storage space, plus a kitchenette. Private but easily accessible, and serviced by common area restrooms.

3

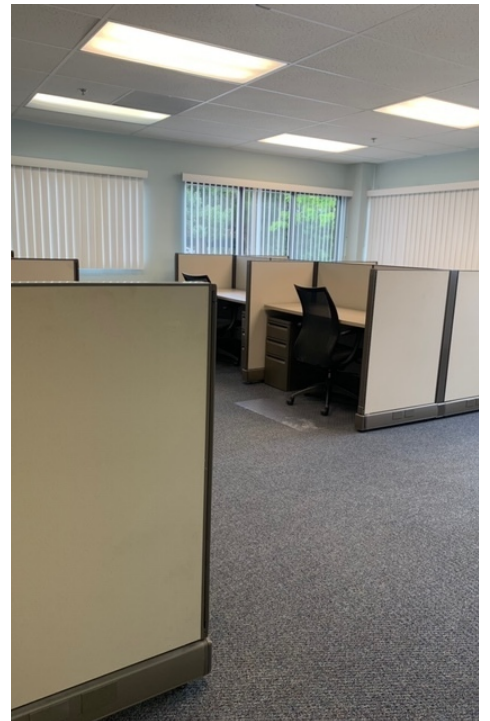




# Suite 101

3 STORY LANDMARK OFFICE BUILDING

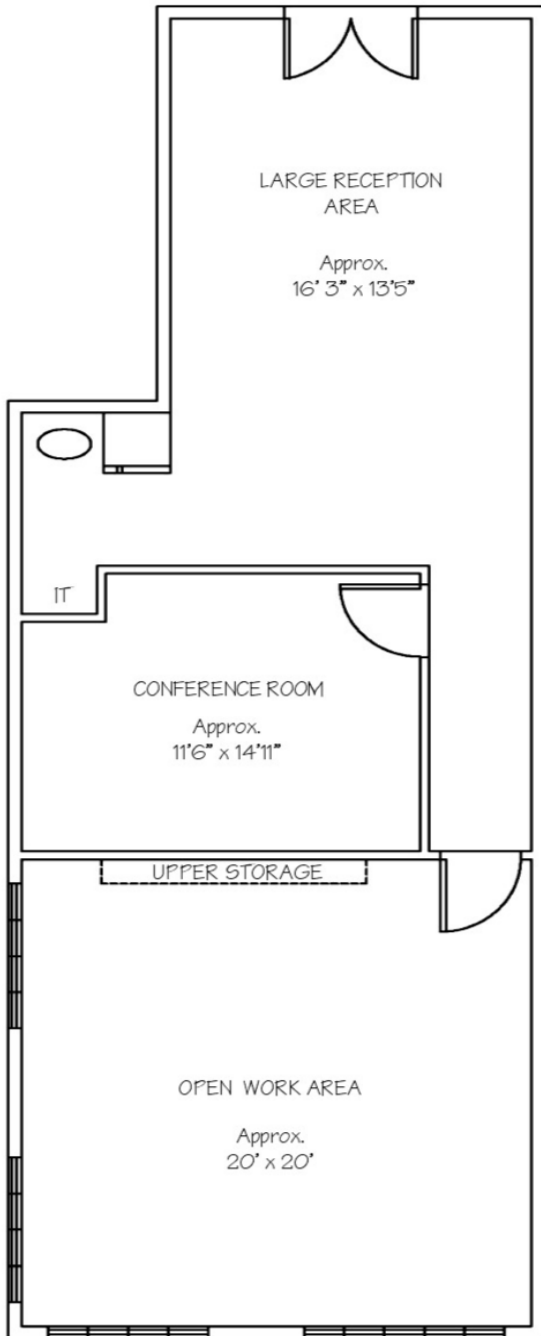
FOR LEASE



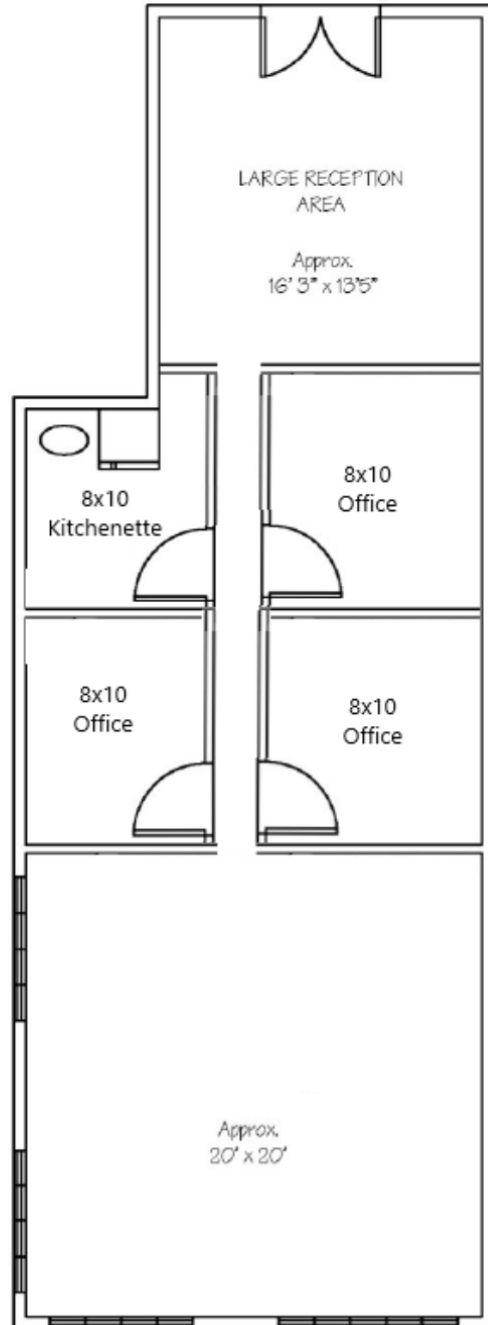
# Suite 101 Floor Plan - 1,295 SF

3 STORY LANDMARK OFFICE BUILDING

**FOR LEASE**



-1st FLOOR PLAN - SUITE 101



-1st FLOOR PLAN - Concept Plan - SUITE 101



# Aerial - Parking

3 STORY LANDMARK OFFICE BUILDING

FOR LEASE





# Retailer Map

3 STORY LANDMARK OFFICE BUILDING

FOR LEASE

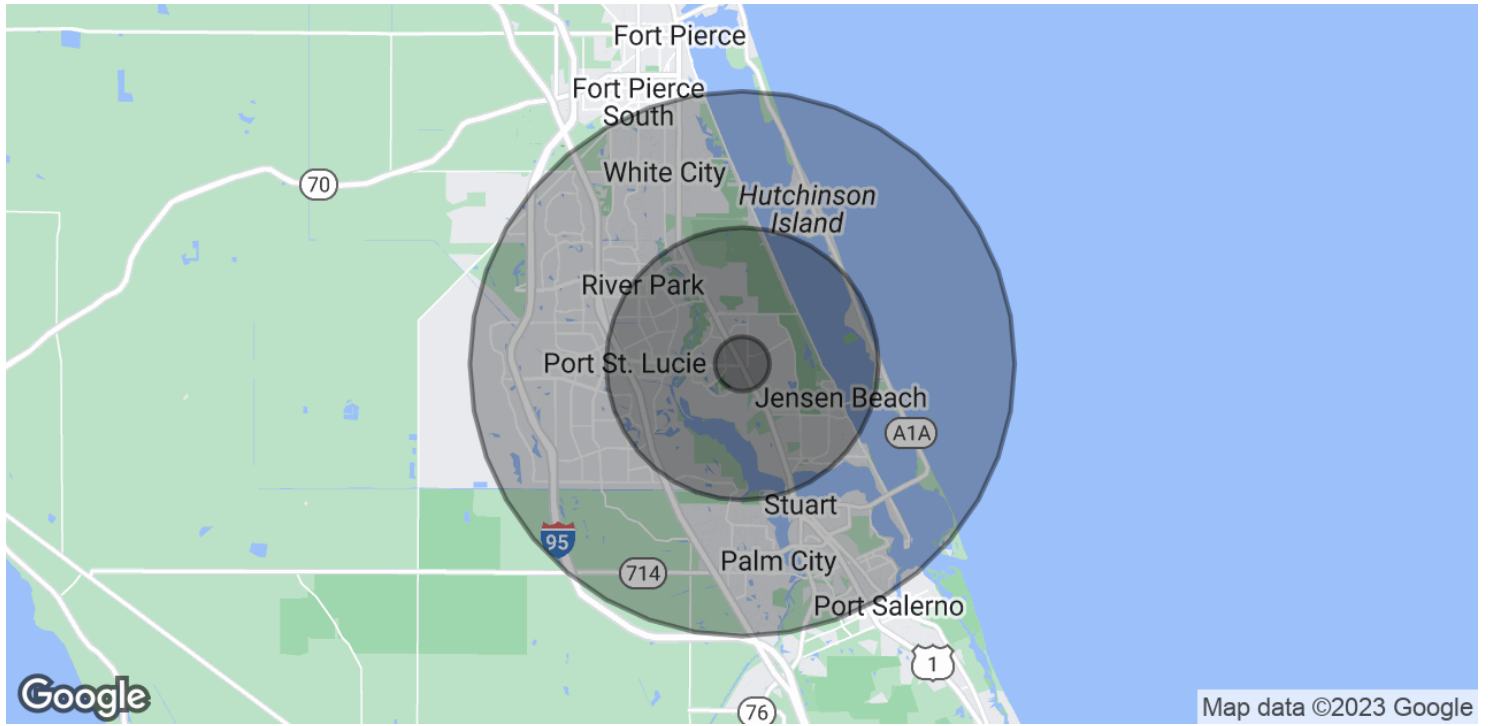




# Demographics Map & Report

3 STORY LANDMARK OFFICE BUILDING

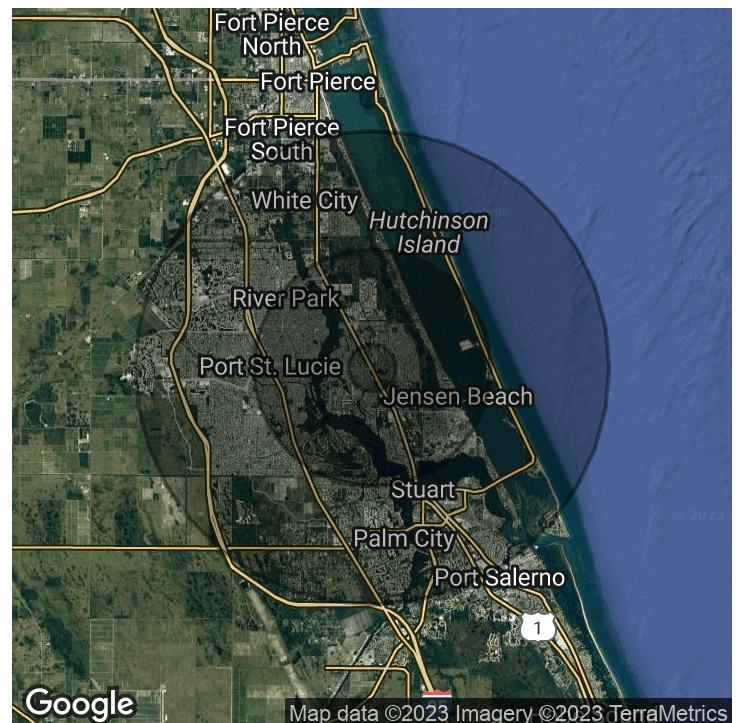
FOR LEASE



POPULATION	1 MILE	5 MILES	10 MILES
Total Population	6,209	80,447	201,131
Average Age	33.6	39.4	42.6
Average Age (Male)	28.9	37.5	41.1
Average Age (Female)	35.7	40.1	43.7

HOUSEHOLDS & INCOME	1 MILE	5 MILES	10 MILES
Total Households	2,099	29,836	77,879
# of Persons per HH	3.0	2.7	2.6
Average HH Income	\$57,787	\$48,891	\$53,824
Average House Value	\$182,326	\$188,560	\$212,352

\* Demographic data derived from 2020 ACS - US Census





# Disclaimer

## 3 STORY LANDMARK OFFICE BUILDING

FOR LEASE

This presentation package has been prepared by the company representing the property for informational purposes only and does not purport to contain all information necessary to reach a purchase decision.

The information herein has been given by the Owner or other sources believed to be reliable, but it has not necessarily been independently verified by the Company representing the property and neither its accuracy nor its completeness is guaranteed.

This information is subject to errors, omissions, changes, prior sale or withdrawal without notice by the Company representing the property and does not constitute a recommendation, endorsement or advice as to the value for the purchase of any property. Each prospective lessee or purchaser is to rely upon his/her own investigation, evaluation and judgment as to the advisability of leasing or purchasing the property.

Furthermore, any financial information and calculations presented in this analysis are believed to be accurate, but are not guaranteed and are intended for the purposes of projection and analysis only. The user of this financial information contained herein should consult a tax specialist concerning his/her particular circumstances before making any investment.