



Ken Richardson

Vice President & Partner

856.797.1919X108 | 609.346.0512
Ken.Richardson@VantageRES.com

Neil Kakumanu

Sales Associate

856.797.1919X106
Neil.Kakumanu@VantageRES.com

856.797.1919
VantageRES.com

1873 Marlton Pike, East, Suite 1C
Cherry Hill, NJ 08003

**PRICE
REDUCTION!**

**FOR
SALE**



PRIME RETAIL & FLEX SPACE
515 WILLIAMSTOWN ROAD, SICKLERVILLE, NJ 08081



DISCLAIMER: The information contained herein has been obtained from sources deemed reliable. Vantage RES makes no representation, guarantee or warranty about its accuracy. Any projections, opinions, assumptions or estimates provided by Vantage RES are for discussion purposes only and do not represent the current or future performance, condition of a property, location or market and subject to errors, omissions, change of price, lease, prior sale or financing, or withdrawal without notice.

OFFERING SUMMARY

Asking Sale Price: \$575,000

SF Available: +/- 3,723 SF

Parking: +/- 8 Spaces

Signage: Pylon

Zoning: PC1

Taxes: \$9,634.27/year



PROPERTY HIGHLIGHTS

+ Recently upgraded with a brand-new septic system, modern flooring, and two completely renovated bathrooms. Energy-efficient LED lighting brightens the interior while reducing utility costs, and a prominent pylon sign enhances visibility and curb appeal. Together, these improvements create a move-in ready space that is both functional and attractive for a wide range of uses

+ Flex/retail property with retail frontage and drive-in access. Positioned just off the Atlantic City Expressway, the site offers excellent visibility and connectivity to Philadelphia, Atlantic City, and South Jersey suburbs. Surrounded by strong residential growth and dense retail corridors, it provides access to a large consumer base in one of Camden County's fastest-growing markets

+ Located in a thriving trade area, Sicklerville offers access to nearly 45,000 residents with a strong median household income exceeding \$100,000. The community is young and family-oriented, with a median age of 36, creating consistent demand for retail, services, and lifestyle amenities. Surrounded by continued residential growth, the area delivers a built-in customer base for businesses looking to expand in South Jersey



FOR SALE

515 WILLIAMSTOWN ROAD, SICKLERVILLE, NJ 08081

856.797.1919

VantageRES.com



POPULATION			
MILE	1 MILE	3 MILE	5 MILE
AVERAGE 2024	9,577	47,579	110,073
PROJECTED 2029	9,679	48,246	111,763

HOUSEHOLDS			
MILE	1 MILE	3 MILE	5 MILE
AVERAGE 2024	3,584	17,215	39,811
PROJECTED 2029	3,623	17,472	40,457

INCOME			
MILE	1 MILE	3 MILE	5 MILE
AVERAGE INCOME	\$84,404	\$107,047	\$113,981
MEDIAN INCOME	\$68,895	\$86,733	\$94,864



FOR SALE

515 WILLIAMSTOWN ROAD, SICKLERVILLE, NJ 08081

856.797.1919
VantageRES.com

KEY DISTANCES



AC EXPRESSWAY 2.7 MILES

ROUTE 30 6.1 MILES

ROUTE 322 6.1 MILE

ROUTE 55 12.4 MILES

ROUTE 206 13.4 MILES

NJ TURNPIKE 15.8 MILES



856.797.1919
VantageRES.com

FOR SALE

515 WILLIAMSTOWN ROAD, SICKLERVILLE, NJ 08081



NEARBY AMENITIES

DINING

- Azul Tequila Mexican Restaurant & Bar
- Buffalo Bills BBQ
- Corrados Restaurant Pizzeria
- Dunkin
- Giulianas Pizza & Pasta House
- Sear Bar 2 Grill & Sports
- Sicklerville Soul Food
- Villa Deli

RETAIL/GROCERY

- Boost Mobile
- Conoco
- Dollar General
- El Mercadito Market
- Inspira Health
- Luca's Laundry
- Number 9 Tattoo
- Public Storage
- USPS
- Wawa



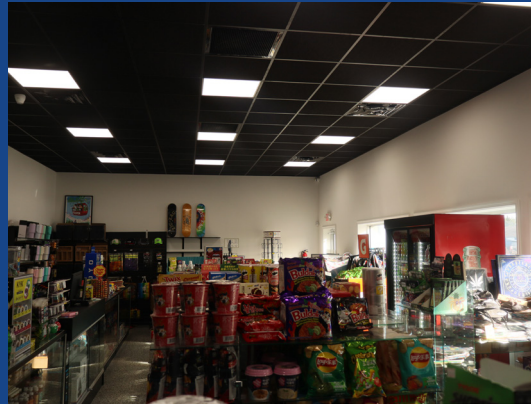
FOR SALE

515 WILLIAMSTOWN ROAD, SICKLERVILLE, NJ 08081

856.797.1919

VantageRES.com

PHOTOGRAPHY



856.797.1919
VantageRES.com

FOR SALE

515 WILLIAMSTOWN ROAD, SICKLERVILLE, NJ 08081