

FOR LEASE: ±3,873 SF OFFICE SPACE

148 E. 30TH ST., NATIONAL CITY, CA 91950



KIMBERLY CLARK, ESQ.
Senior Vice President | 858.458.3343
kclark@voitco.com | Lic. #01439305

Voit
REAL ESTATE SERVICES

THE CLARK TEAM



Suite 201 - ±3,873 SF

PROPERTY FEATURES

- » Total building size is approximately 7,389 SF
- » Two-story building
- » Situated on an approximate 0.26 acre lot
- » Newly repositioned with high end improvements
- » **Sublease Rate: \$1.98/SF plus electricity**

PROPERTY FEATURES



**HIGH END
IMPROVEMENTS**



**NEW ENERGY EFFICIENT
WINDOW & DOOR SYSTEM**



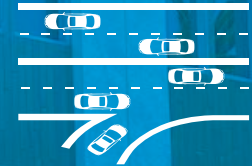
**MONUMENT SIGNAGE
AVAILABLE**



**AMPLE PARKING
SPACES**



**CLOSE TO TRANSPORTATION,
AIRPORT & MILE OF CARS**



**EASY ACCESS TO INTERSTATES
5 & 805 AND HIGHWAY 54**





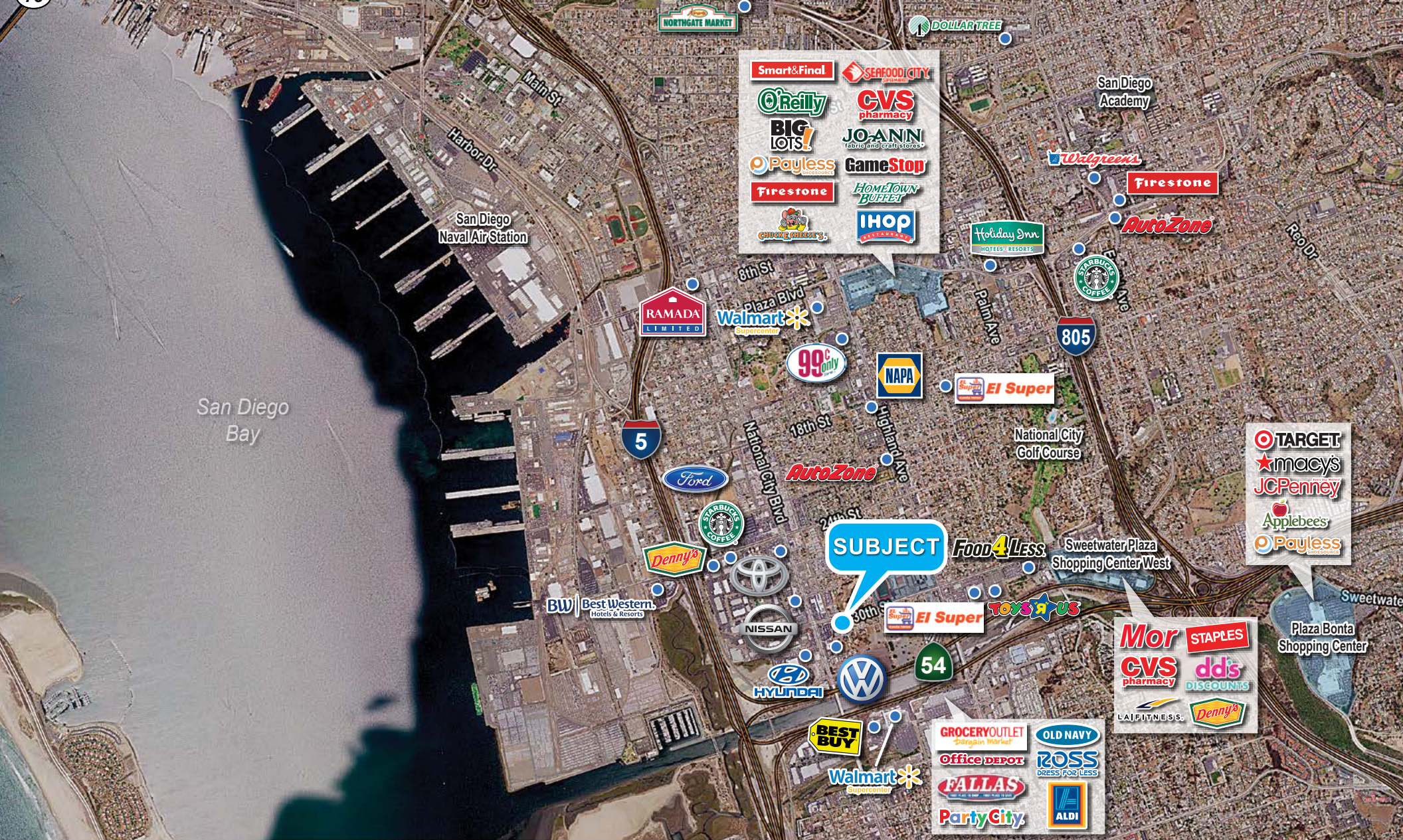
DEMOGRAPHICS

	1 MILE	3 MILES	5 MILES
2024 Population	20,806	162,904	412,927
2029 Population Projection	20,553	161,479	409,434
2024 Households	6,645	48,171	128,097
2029 Household Projection	6,548	47,663	126,965
Median Home Value	\$516,204	\$574,174	\$614,513
Median Year Built	1965	1966	1971
Median Household Income	\$58,028	\$63,111	\$68,891

TRAFFIC COUNTS

STREET	CROSS STREET	CARS/DAY
East 30th Street	B Avenue	5,022
National City Boulevard	East 32nd Street	18,375
National City Boulevard	East 27th Street	15,760
East 32nd Street	National City Boulevard	7,396
West 30th Street	Transportation Avenue	3,347
East 30th Street	F Avenue	8,245
D Avenue	East 27th Street	4,144
Highway 54	National City Boulevard	54,500





KIMBERLY CLARK, ESQ.

Senior Vice President | 858.458.3343

kclark@voitco.com | Lic. #01439305

4180 La Jolla Village Drive, Suite 100, La Jolla, CA 92037 | 858.453.0505 | Lic. #01991785 | www.voitco.com

Licensed as a Real Estate Salesperson by the DRE. The information contained herein has been obtained from sources we deem reliable. While we have no reason to doubt its accuracy, we do not guarantee it. ©2026 Voit Real Estate Services, Inc. All Rights Reserved.

Voit

REAL ESTATE SERVICES



THE CLARK TEAM