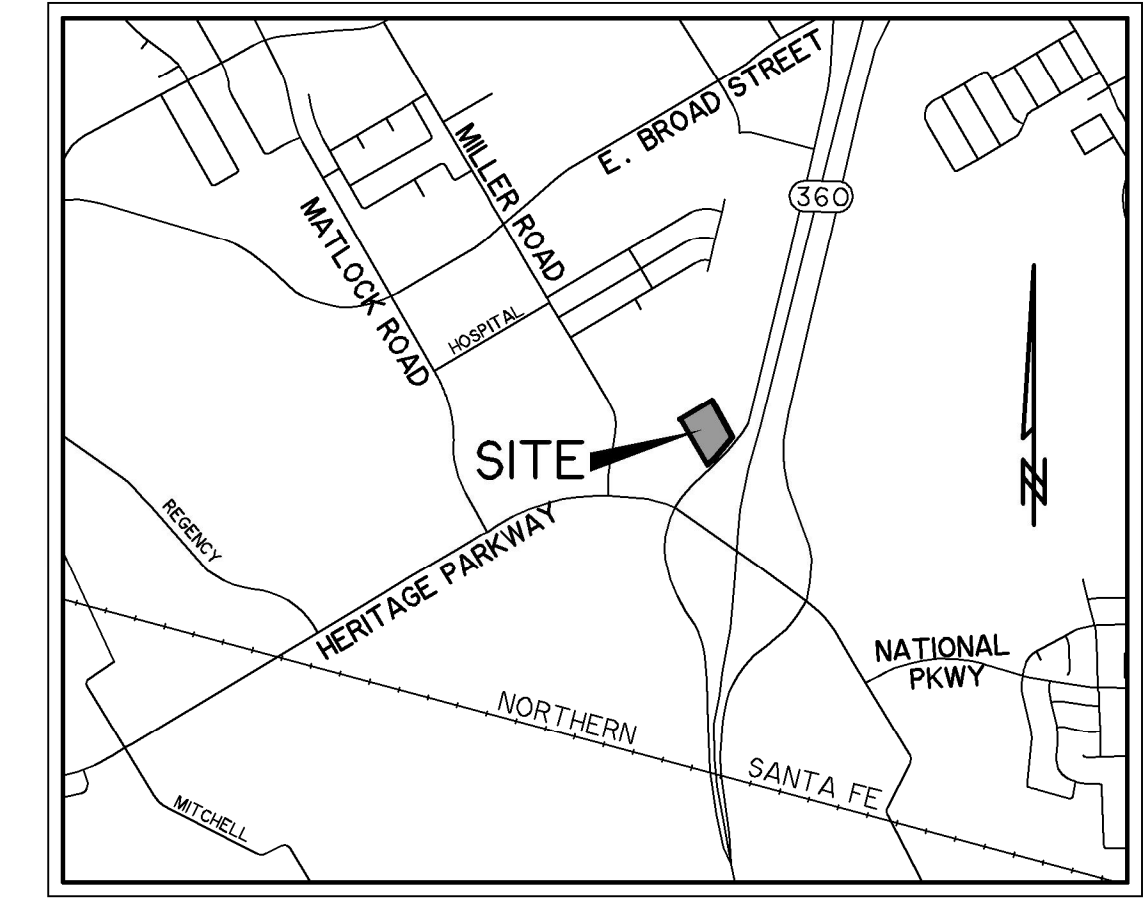
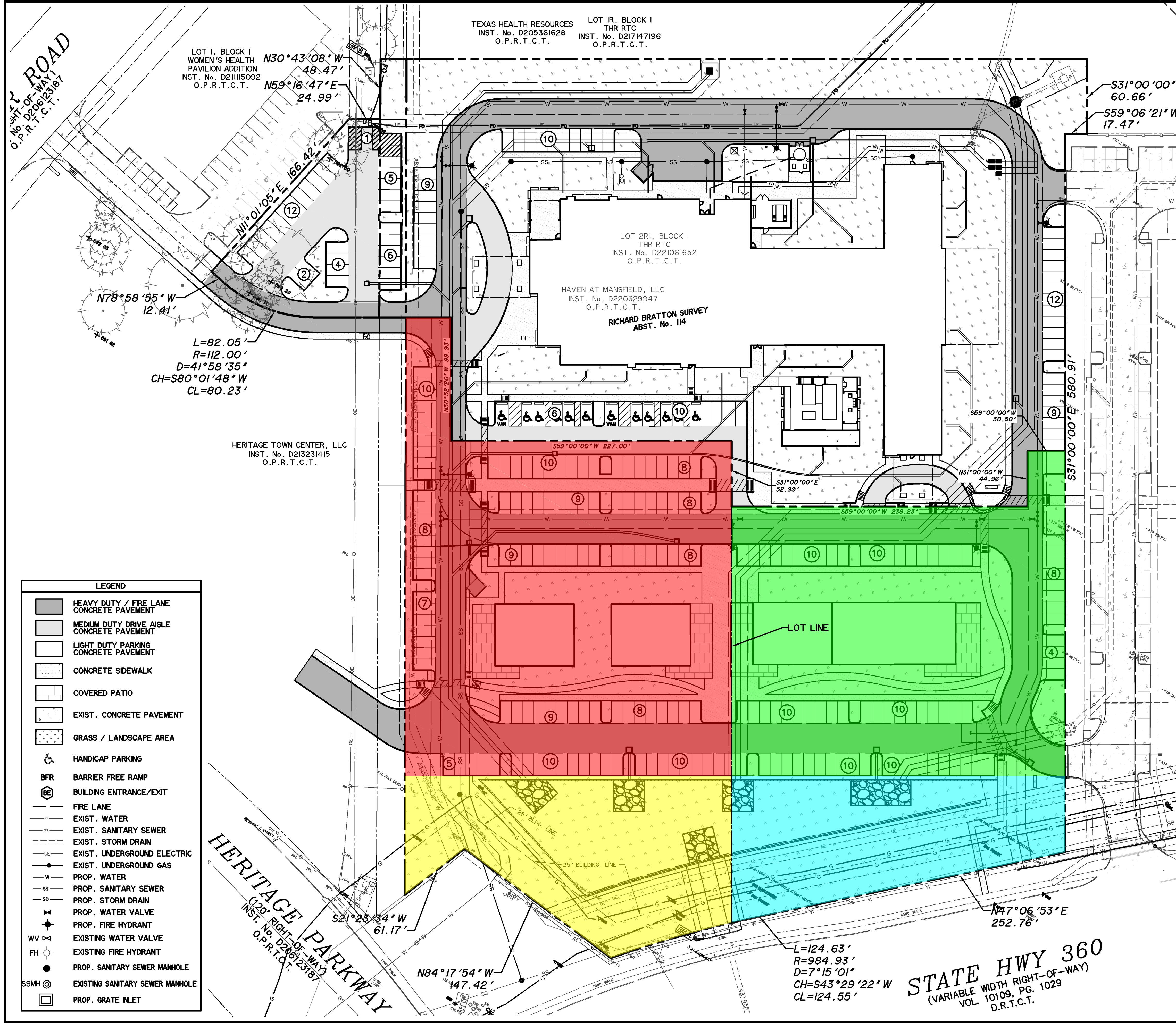


PRINTED: 2/16/2024 9:20 AM FILE: WIER-PAVING.STB LAST SAVED: 2/16/2024 9:20 AM SAVED BY: RENEW FILE: 2024-2-16 SITE PLAN 05056.04.DWG



VICINITY MAP
NOT TO SCALE

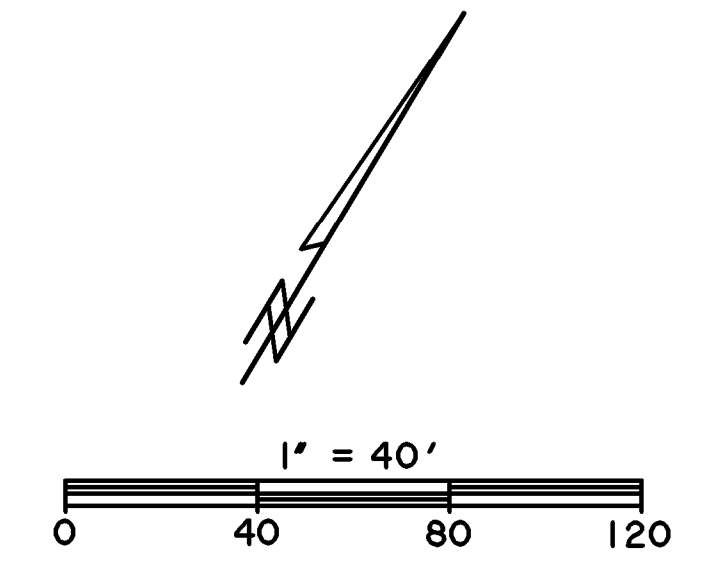
Phase	Lot	Acres	Parking Stalls
Phase 2	Lot A		
	A1 (Red)	1.72	118
	A2 (Yellow)	0.66	-
	Lot A Total	2.38	118
Lot B	B1 (Green)	1.38	75
	B2 (Blue)	0.56	-
	Lot B Total	1.94	75
	Ph 2 Total	4.32	193

LEGEND

- HEAVY DUTY / FIRE LANE CONCRETE PAVEMENT
- MEDIUM DUTY DRIVE AISLE CONCRETE PAVEMENT
- LIGHT DUTY PARKING CONCRETE PAVEMENT
- CONCRETE SIDEWALK
- COVERED PATIO
- EXIST. CONCRETE PAVEMENT
- GRASS / LANDSCAPE AREA
- HANDICAP PARKING
- BFR BARRIER FREE RAMP
- BE BUILDING ENTRANCE/EXIT
- FIRE LANE
- EXIST. WATER
- EXIST. SANITARY SEWER
- EXIST. STORM DRAIN
- EXIST. UNDERGROUND ELECTRIC
- EXIST. UNDERGROUND GAS
- PROP. WATER
- PROP. SANITARY SEWER
- PROP. STORM DRAIN
- PROP. WATER VALVE
- PROP. FIRE HYDRANT
- EXISTING WATER VALVE
- EXISTING FIRE HYDRANT
- PROP. SANITARY SEWER MANHOLE
- EXISTING SANITARY SEWER MANHOLE
- PROP. GRATE INLET

ENGINEER / SURVEYOR
WIER & ASSOCIATES, INC.
 2201 E. LAMAR BLVD., SUITE 200E
 ARLINGTON, TEXAS 76006
 CONTACT: RANDY EARDLEY, P.E.
 EMAIL: RANDYE@WIERASSOCIATES.COM
 PH: (817) 467-7700
 FAX: (817) 467-7713

OWNER / DEVELOPER
MEDCORE DEVELOPMENT, LLC
 12377 MERIT DRIVE, SUITE 500
 DALLAS, TEXAS 75251
 CONTACT: WES JOHNSTON
 EMAIL: WES@MEDCOREPARTNERS.COM
 PH: (214) 736-3911



PRELIMINARY PLANS
 FOR PROJECT REVIEW.
 NOT FOR
 CONSTRUCTION,
 BIDDING OR PERMIT
 PURPOSES.
 Prepared By/Or Under
 Direct Supervision Of
 Randy Eardley, P.E.
 Texas Registration
 No. 104957 On
 Date Shown Below

SITE LAYOUT EXHIBIT

PREPARED BY:
WIA WIER & ASSOCIATES, INC.
ENGINEERS SURVEYORS LAND PLANNERS
 2201 E. LAMAR BLVD., SUITE 200E ARLINGTON, TEXAS 76006 METRO (817) 467-7700
 Texas Firm Registration No. F-2776 www.WierAssociates.com
 Texas Board of Professional Land Surveying Registration No. 10033900

STATE HWY 360
 (VARIABLE WIDTH RIGHT-OF-WAY)
 VOL. 10109, PG. 1029
 D.R.T.C.T.