

# New Sublease

## 3015 W Moore St



**Scott's Addition**

**CONTACT US:**

Landon Hinton | 757.618.0825 | [landon@7hillscre.com](mailto:landon@7hillscre.com)



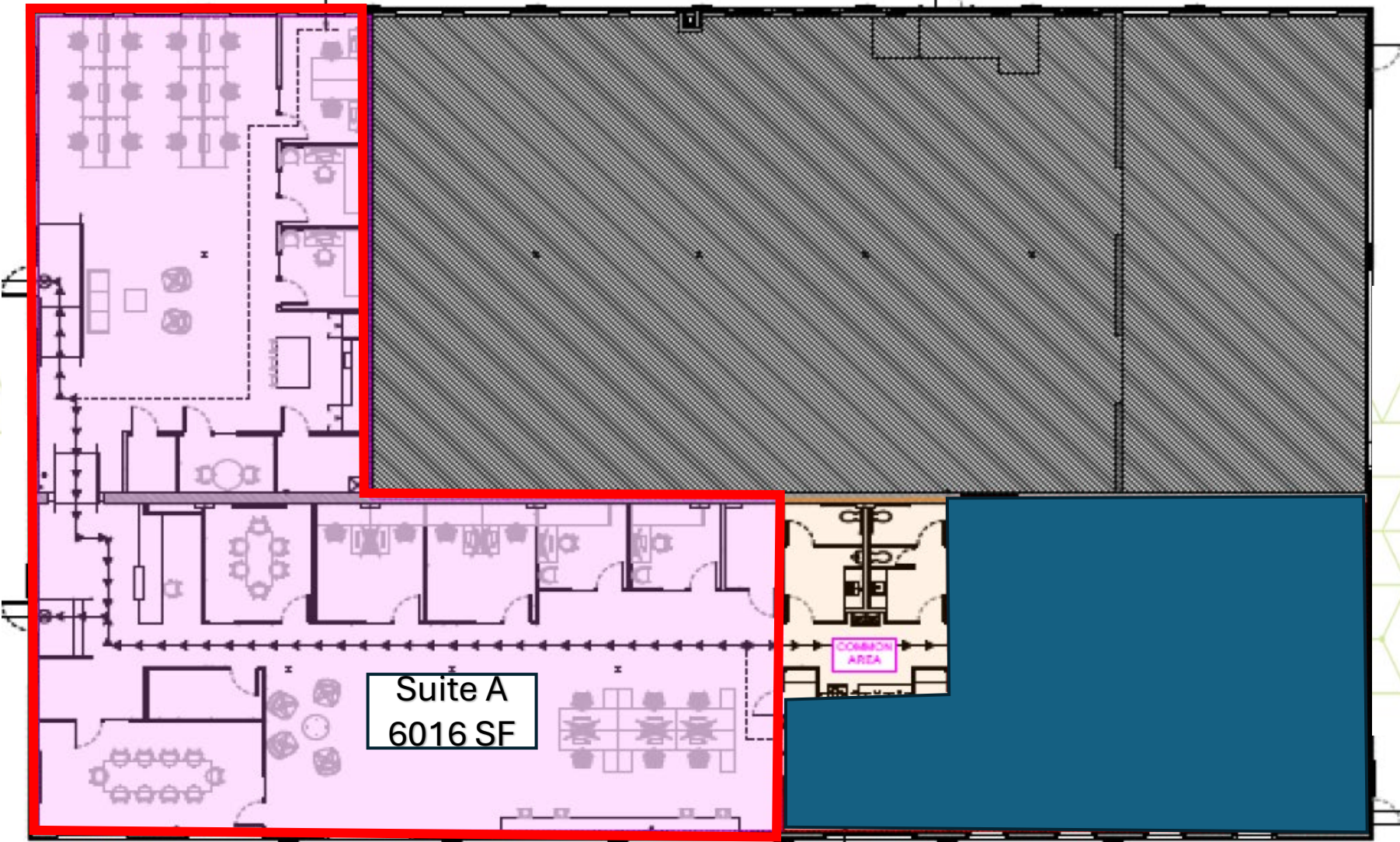
# PROPERTY HIGHLIGHTS

- 6,016 RSF
- Creative office, move in ready
- Convenient access to I-64 & I-95
- In the heart of Scott's Addition
- Walking distance to restaurants, breweries, shops & recreation
- Furniture available
- Some off-street parking included
- Available now
- Sublease through September 2026



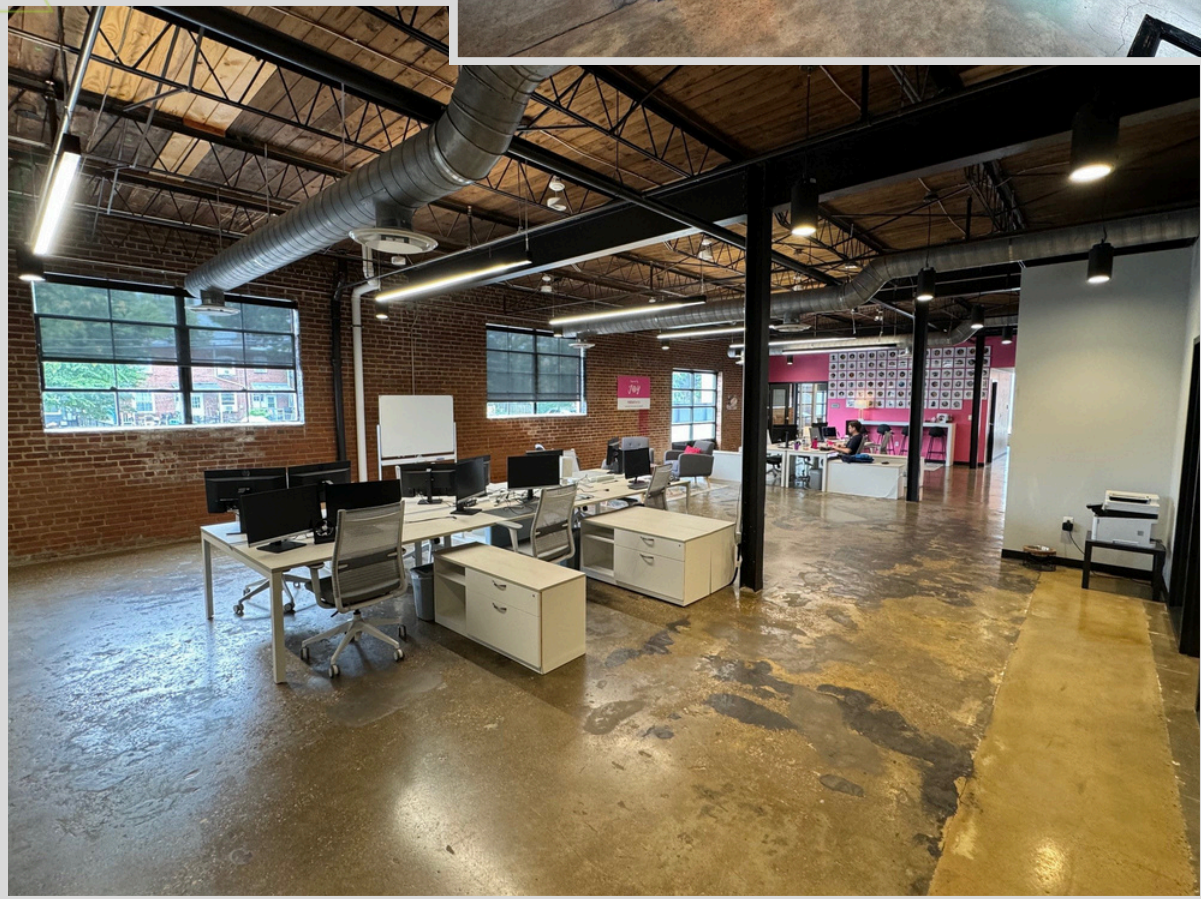
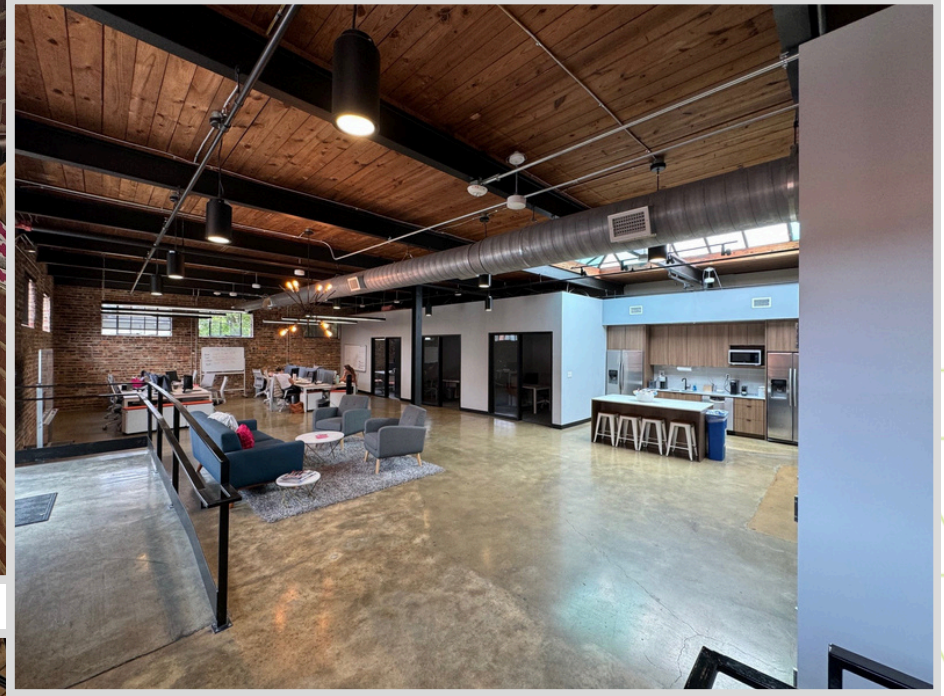


# Space Plan



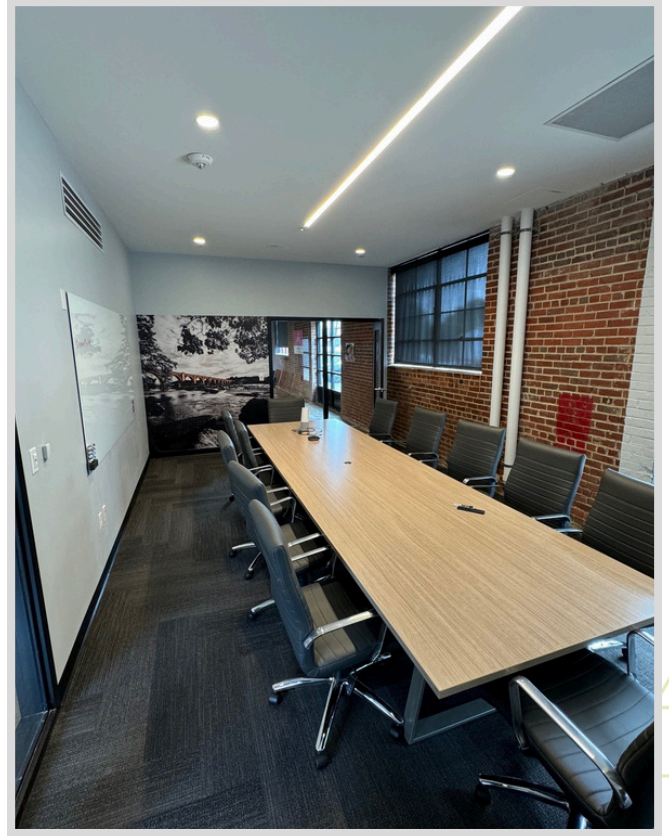


# Photos





# Photos





# Photos





# LIVE. WORK. PLAY!



## DRINK

- Vasen Brewing Company
- Hofheimer Rooftop
- Wood & Iron Gameday Restaurant & Bar
- Social 52 Kitchen & Craft Bar
- Ardent Craft Ales
- Strangeways Brewing
- Buskey Cider
- The Veil Brewing Company
- Star Hill Beer Hall & Rooftop
- Brambly Park
- Hardywood Park Craft Brewery
- Cirris Vodka Tasting Room
- Reservoir Distillery
- Three Notch'd Brewing Company



## ENTERTAINMENT

- The Park RVA
- Slinghot Social Game Club
- Bingo Beer Company
- Topgolf
- Shield n Sheath - Hatchet House
- The Broadberry



There are over 25 Multi-Family apartment properties in Scott's Addition proper



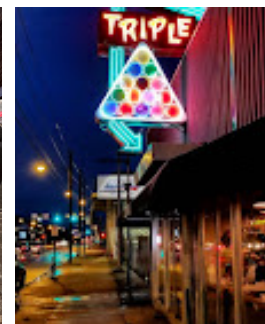
## EAT

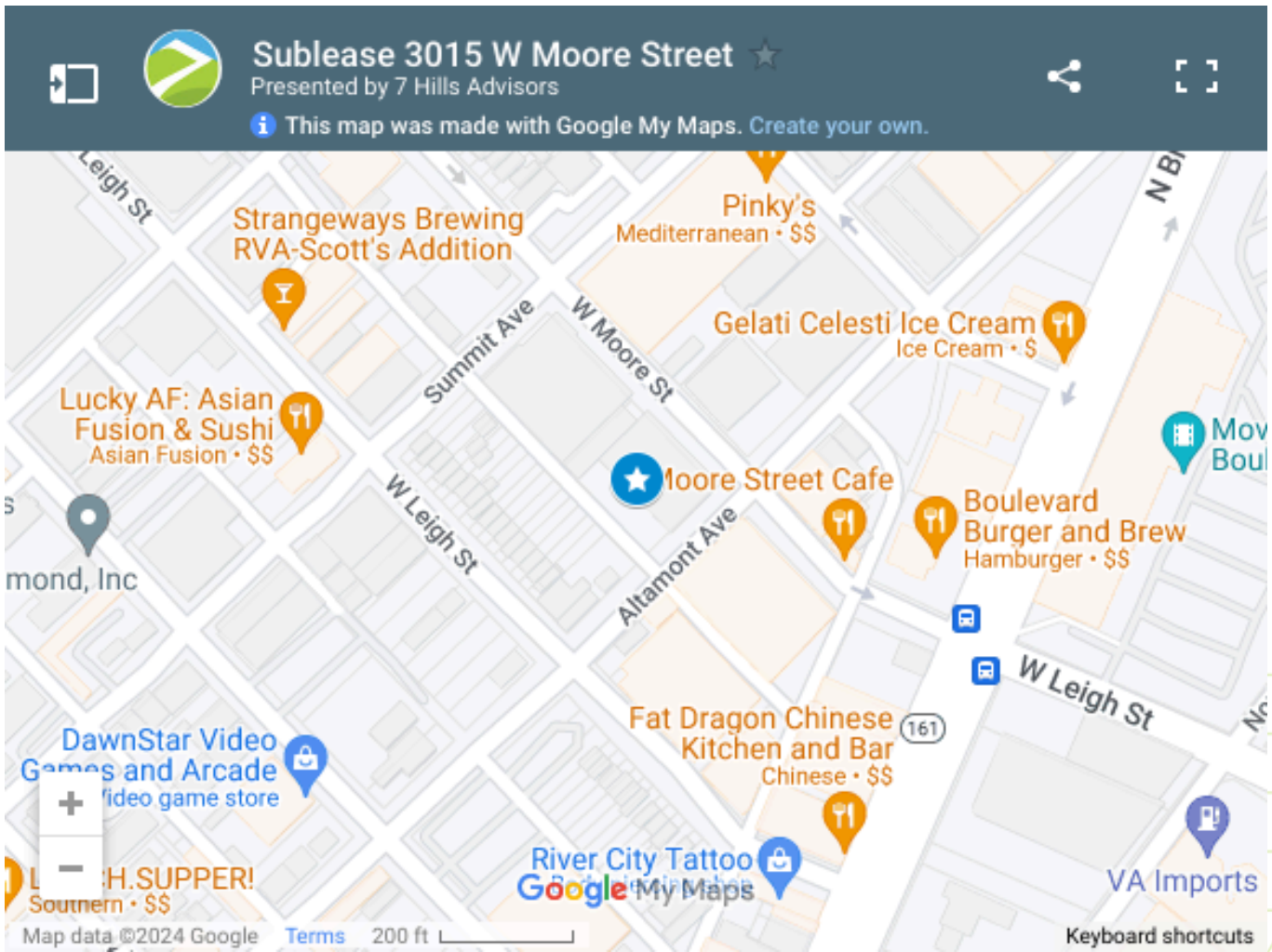
- Lucky AF: Asian Fusion & Sushi
- Cabo Fish Taco
- Pinky's
- Tazza Kitchen
- ZZQ
- LUNCH.SUPPER!
- Eazzy Burger
- Pitsa Scott's Addition
- Stella's Grocery
- Fat Dragon Chinese



## EXERCISE & FITNESS

- City Barre
- Crunch Fitness
- YogaSix
- Turn Cardio Jam Studio
- Vintage Boxing Gym
- Row House
- BOHO Cycle Studio





Double click to interact

## CONTACT US:

# 7HA

503 LIBBIE AVE  
SUITE ONE A  
RICHMOND, VA 23226

Landon Hinton | 757.618.0825 | [landon@7hillscre.com](mailto:landon@7hillscre.com)