



COMMERCIAL  
real property, real value.

# Liberty Office Center

3680-3700 W Liberty Rd., Ann Arbor, MI 48103

Office for Lease // Executive Summary



## OFFERING SUMMARY

<b>LEASE RATE:</b>	<b>\$24(MG)</b>
<b>BUILDING SIZE:</b>	<b>12,000 SF</b>
<b>AVAILABLE SF:</b>	<b>2,600 SF</b>
<b>ZONING:</b>	<b>I-1</b>
<b>PARKING:</b>	<b>32 / 2.67 RATIO</b>

## LOCATION OVERVIEW

Liberty Office Center is conveniently located to downtown Ann Arbor, I-94, US-23 and M-14. Building occupants include dental practice, CPA/Financial Advisory firm and three business offices.

NW Ann Arbor on North side of Liberty Rd, second drive west of Liberty Rd / Wagner Rd intersection.

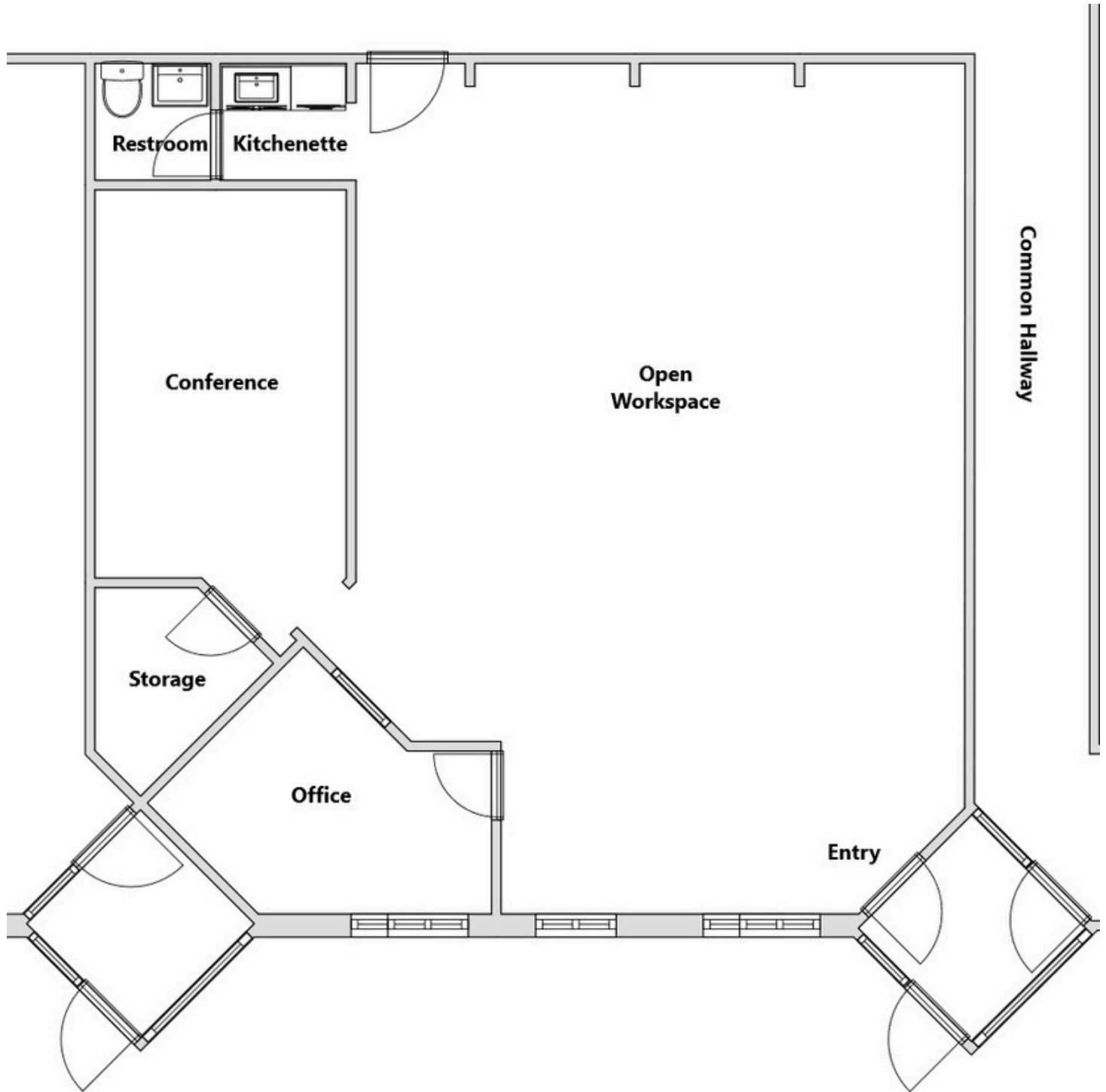
## FOR LEASE

<b>SPACES</b>	<b>RATE</b>	<b>SIZE</b>
<b>3684 LIBERTY</b>	<b>\$24(MG)</b>	<b>1,740 SF</b>

# Liberty Office Center

3680-3700 W Liberty Rd., Ann Arbor, MI 48103

Office for Lease // 3684 Liberty Floorplan



# Liberty Office Center

3680-3700 W Liberty Rd., Ann Arbor, MI 48103

Office for Lease // 3684 Liberty Photos



# Liberty Office Center

3680-3700 W Liberty Rd., Ann Arbor, MI 48103

Office for Lease // **Contact**



## TYLER BURGOON

Broker / Operations Director

[tyler@jpcommercialre.com](mailto:tyler@jpcommercialre.com)

office 734 994 8800

cell 734 730 5633



JP COMMERCIAL REAL ESTATE (JPCRE) DOES NOT MAKE ANY REPRESENTATIONS OR WARRANTIES, EXPRESS OR IMPLIED, AS TO THE ACCURACY OR COMPLETENESS OF THE INFORMATION CONTAINED HEREIN, AND NOTHING CONTAINED HEREIN IS OR SHALL BE RELIED UPON AS A PROMISE OR REPRESENTATION AS TO THE FUTURE REPRESENTATION OF THE PROPERTY. THIS MAY INCLUDE CERTAIN STATEMENTS AND ESTIMATES WITH RESPECT TO THE PROPERTY. JPCRE DISCLAIMS ANY AND ALL LIABILITY FOR REPRESENTATIONS OR WARRANTIES, EXPRESSED OR IMPLIED, CONTAINED IN OR OMITTED INFORMATION. THE INFORMATION CONTAINED HEREIN IS SUBJECT TO CHANGE WITHOUT NOTICE AND THE RECIPIENT OF THESE MATERIALS SHALL NOT LOOK TO JPCRE OR THE JPCRE ADVISOR NOR ANY OF THEIR OFFICERS, EMPLOYEES, REPRESENTATIVES, INDEPENDENT CONTRACTORS OR AFFILIATES, FOR THE ACCURACY OR COMPLETENESS THEREOF.

