

Retail/Office/Flex Space For Lease

1130 Chattahoochee Ave Atlanta, GA 30318

1130 Chattahoochee Ave

PROPERTY DESCRIPTION - Available Now

Located in the heart of West Midtown's Chattahoochee Avenue corridor, this dynamic property is steps from The Works, Topgolf, Westside Park, and the Beltline. It's a PRIME location for retail, creative offices, and flex space. The development features 24 stacked 320 SF shipping container lofts (8' x 40'), each fitted with drywall, a private bathroom, commercial glass doors, and private balconies as well as a 1,600 SF stand alone building, 24 parking spaces, and a rooftop deck with Midtown views. Ideal for retail, creative studios, breweries, tech startups, and more. Flexible leasing available—secure your space in Atlanta's most exciting commercial hub!



Located across the street from The Works and down the street from Topgolf



Incredible Visibility to Chattahoochee Ave with over 26K VPD and terrific signage



DEMOGRAPHICS

	1 Mile	3 Miles	5 Miles
Population	11,198	126,347	333,531
Average HH Income	\$149,300	\$145,400	\$135,400
Total Households	6,342	60,745	162,963



Eric Rubin

504.210.5266

eric@shumacher.com



Peter Kruskamp

678.923.3495

peter@shumacher.com

Site Plan

1130 Chattahoochee Ave Atlanta, GA 30318



Eric Rubin
504.210.5266
eric@shumacher.com



Peter Kruskamp
678.923.3495
peter@shumacher.com

Trade Area

1130 Chattahoochee Ave Atlanta, GA 30318



Eric Rubin
504.210.5266
eric@shumacher.com



Peter Kruskamp
678.923.3495
peter@shumacher.com

Trade Area

1130 Chattahoochee Ave Atlanta, GA 30318



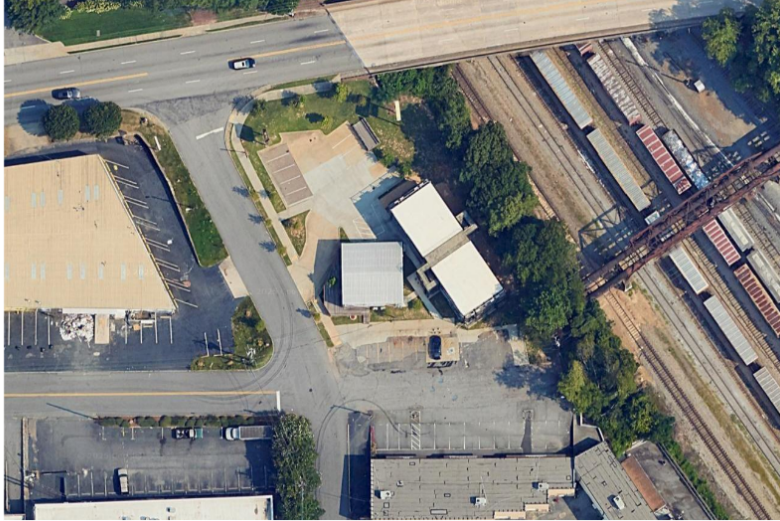
Eric Rubin
504.210.5266
eric@shumacher.com



Peter Kruskamp
678.923.3495
peter@shumacher.com

Aerials & Photos

1130 Chattahoochee Ave Atlanta, GA 30318



Eric Rubin
504.210.5266
eric@shumacher.com



Peter Kruskamp
678.923.3495
peter@shumacher.com