



CREEK|CRE

OFFICE SPACE FOR LEASE

710 WEST WILSHIRE BOULEVARD

Oklahoma City, OK 73116

TYLER HUXLEY
405.973.8435
tyler@creekcre.com

GARRETT MCGINNIS
405.919.9297
garrett@creekcre.com

600 NE 4TH STREET, SUITE 100 | OKLAHOMA CITY, OK 73104-6231 | 405.510.0079 | CREEKCRE.COM

APRIL 09, 2026

EXECUTIVE SUMMARY



OFFERING SUMMARY

Lease Rate:	\$10.18 SF/yr (MG)
Available SF:	1,505 - 3,010 SF
Building Size:	9,496 SF
Business Type:	501(c)(3) organizations

PROPERTY OVERVIEW

Office space available for sublease just off Wilshire Blvd, totaling 3,010 SF and divisible to approximately half. The layout includes a mix of private offices and larger open areas. A 10-foot roll-up door at the rear provides access for storage or loading. Sublease available exclusively to 501(c)(3) organizations. Current tenant's lease runs through July 31, 2028.

SPACES

LEASE RATE

SPACE SIZE

710 Suite 102

\$10.18 SF/yr

1,505 - 3,010 SF

TYLER HUXLEY
405.973.8435
tyler@creekcre.com

GARRETT MCGINNIS
405.919.9297
garrett@creekcre.com

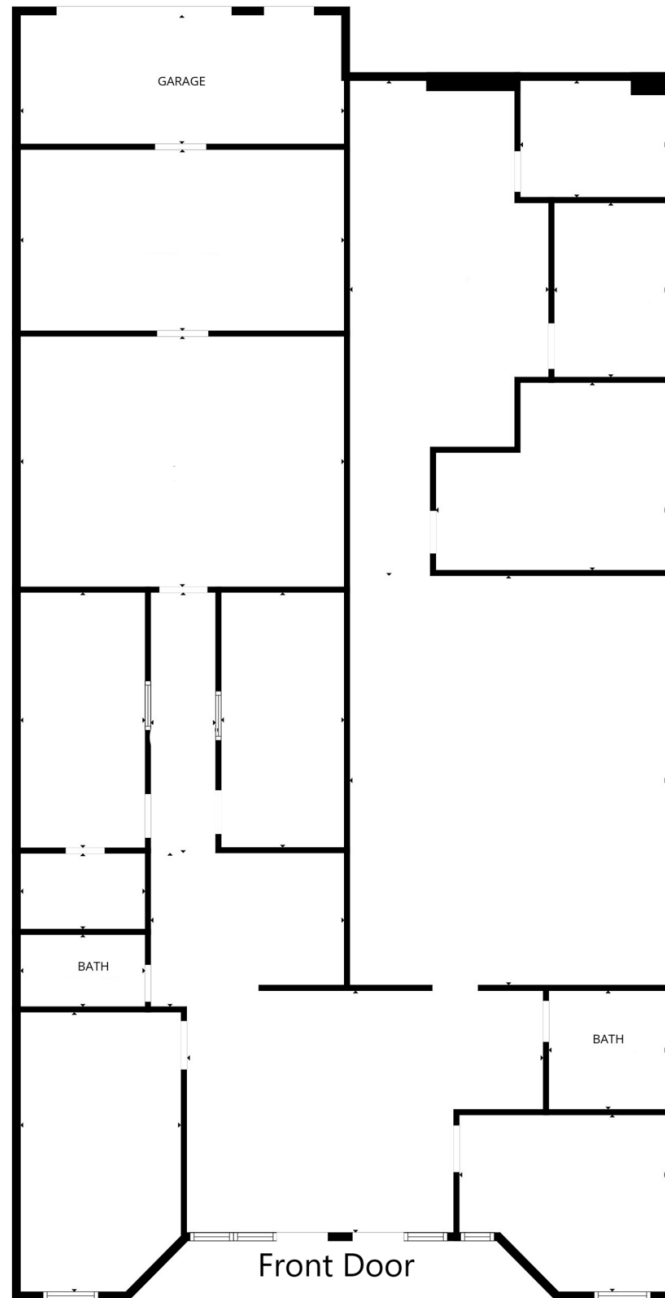
ADDITIONAL PHOTOS



TYLER HUXLEY
405.973.8435
tyler@creekcre.com

GARRETT MCGINNIS
405.919.9297
garrett@creekcre.com

FLOOR PLANS

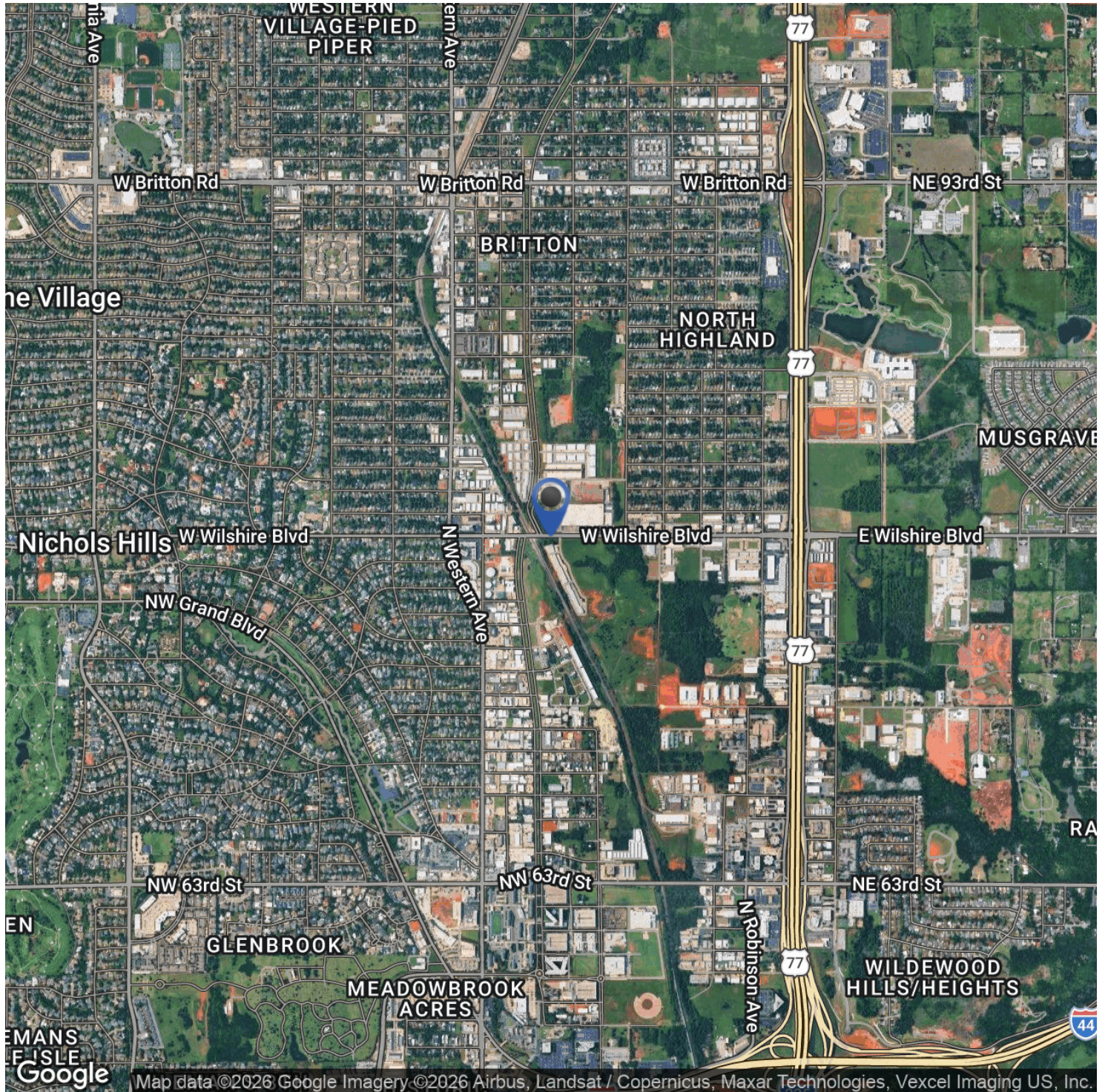


FLOOR PLAN CREATED BY CUBICASA APP. MEASUREMENTS DEEMED HIGHLY RELIABLE BUT NOT GUARANTEED.

TYLER HUXLEY
405.973.8435
tyler@creekcre.com

GARRETT MCGINNIS
405.919.9297
garrett@creekcre.com

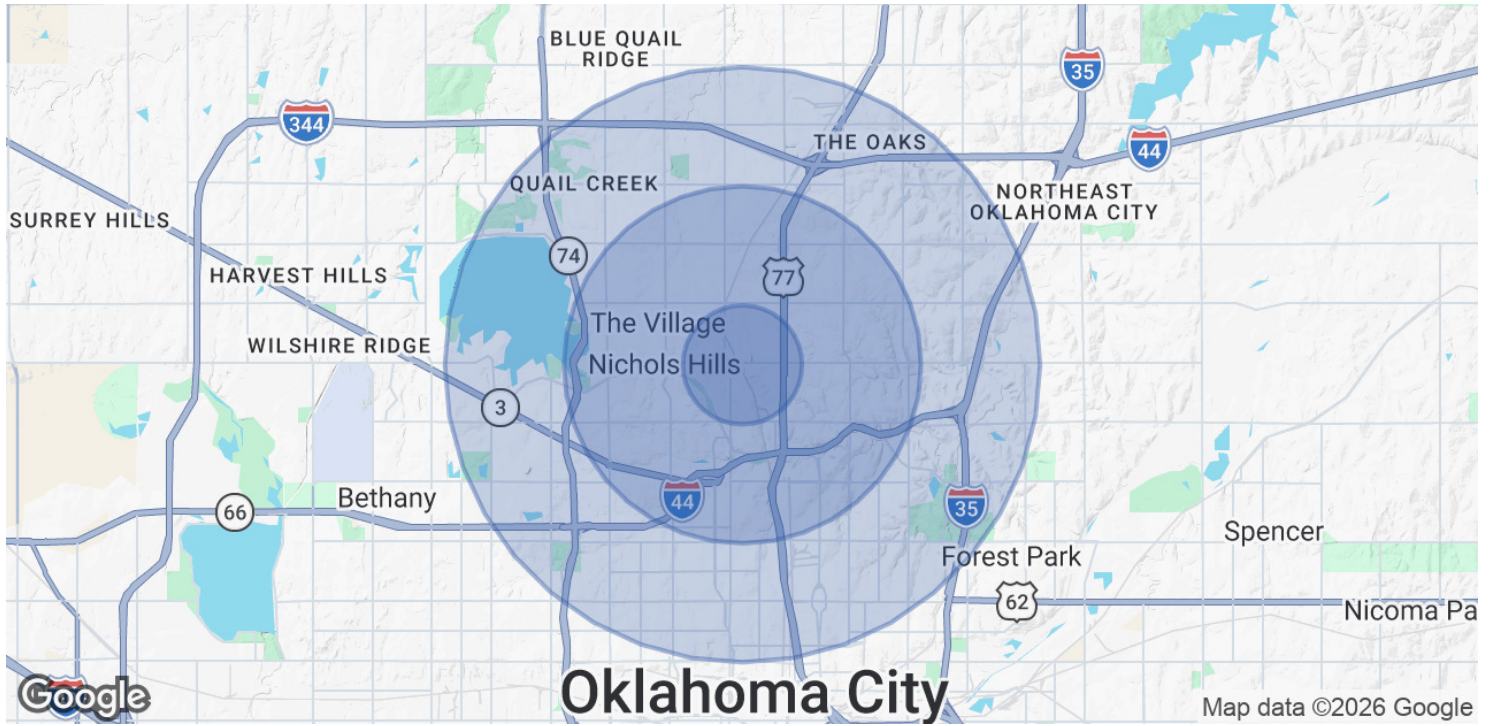
LOCATION MAP



TYLER HUXLEY
405.973.8435
tyler@creekcre.com

GARRETT MCGINNIS
405.919.9297
garrett@creekcre.com

DEMOGRAPHICS MAP & REPORT



POPULATION	1 MILE	3 MILES	5 MILES
Total Population	7,076	60,425	165,909
Average Age	35.8	38.9	37.5
Average Age (Male)	37.5	38.2	37.1
Average Age (Female)	36.7	40.0	38.3

HOUSEHOLDS & INCOME	1 MILE	3 MILES	5 MILES
Total Households	3,063	29,178	79,210
# of Persons per HH	2.3	2.1	2.1
Average HH Income	\$130,330	\$104,923	\$92,232
Average House Value	\$478,145	\$309,160	\$276,203

2023 American Community Survey (ACS)

TYLER HUXLEY
 405.973.8435
 tyler@creekcre.com

GARRETT MCGINNIS
 405.919.9297
 garrett@creekcre.com