

FOR SALE/LEASE

±0.87 ACRES OF VACANT LAND

4620 FELSPAR STREET, JURUPA VALLEY, CA 92509

**OFFICE
TRAILER FULLY
REFURBISHED
INCLUDING
NEW ROOF
COATING**



LEE & ASSOCIATES
COMMERCIAL REAL ESTATE SERVICES



JUSTIN NULL, SIOR
VICE PRESIDENT
951.276.3634
JNULL@LEERIVERSIDE.COM
DRE #01899025



LAWRENCE C. NULL, SIOR
SENIOR VICE PRESIDENT
951.276.3616
LNULL@LEERIVERSIDE.COM
DRE #00822133

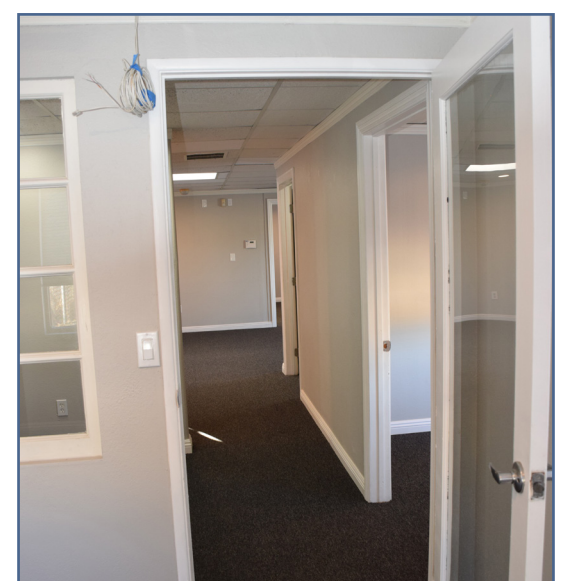
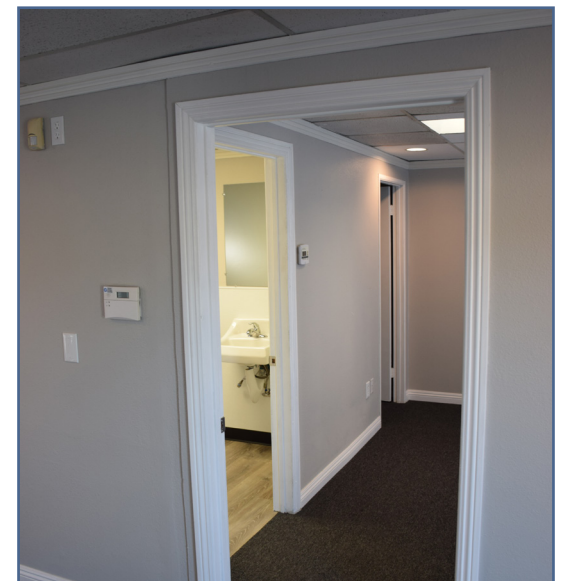
No warranty or representation has been made to the accuracy of the foregoing information. Terms of sale or lease and availability are subject to change or withdrawal without notice. Lee & Associates Commercial Real Estate Services, Inc. - Riverside. 4193 Flat Rock Drive, Suite 100, Riverside, CA 92505 | 951.276.3600 | Corporate DRE#: 01048055 | www.lee-associates.com

PROPERTY INFORMATION

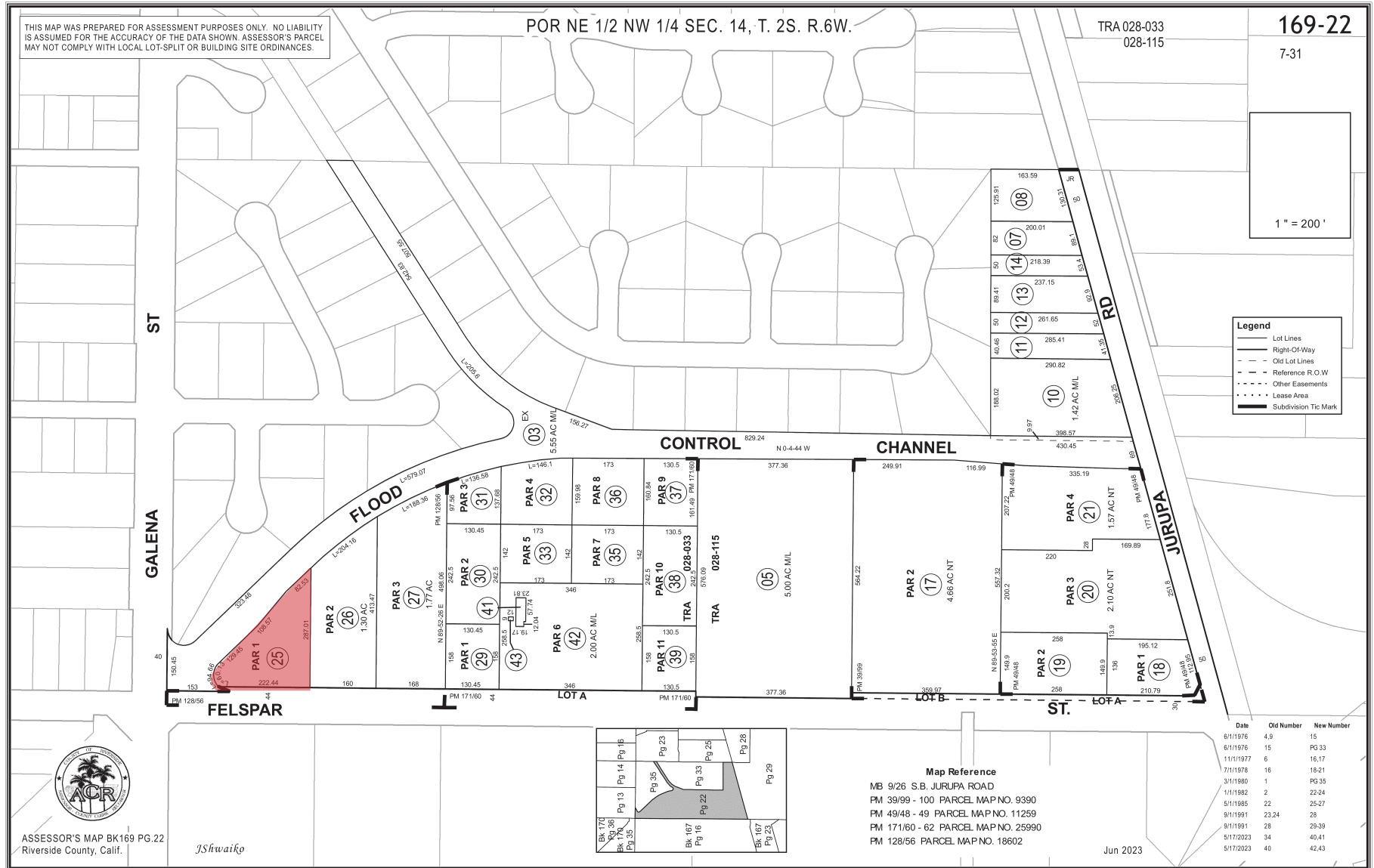
LAND ACRES:	±0.87 (±37,897 SF)
STRUCTURE:	Office Trailer
ZONING:	M-SC (Verify)
PARKING:	Paved & Striped - 14 Spaces
POWER:	Verify
YARD:	Secured with Block Wall and Rolling Gate
APN:	169-220-025



INTERIOR PHOTOS



PARCEL MAP



LOCATION MAP

