

100

IMS DRIVE

PARSIPPANY

BUILDING SIZE:

83,477 SF

**PREMISES:**

83,477 SF

**AVAILABILITY:**

Immediate

**TERM:**

Thru December 2027

**ASKING RENT:**

\$9.00 Net



CORPORATE HEADQUARTERS SUBLEASE SPACE IN PRIME PARSIPPANY LOCATION

20,870 – 83,477 SF AVAILABLE

FEATURES:

- Plug & Play - First generation corporate headquarters offered fully furnished
- Multiple branding opportunities including building signage along I-80
- Modern building design with granite & glass curtain wall exterior
- Four-story atrium with granite and wood decor
- Fitness center & food service in building
- Generator backup for critical functions
- Covered parking garage
- Parking ratio 5/1,000 SF
- Part of a mixed use campus featuring luxury residential apartments and Houlihan's bar and restaurant
- Prime Parsippany location
- Newark Liberty International Airport 41 minutes, 23 miles

FOR INFORMATION, PLEASE CONTACT:**PAUL E. GIANNONE**

Executive Managing Director
732 452 6184
paul.giannone@cushwake.com

JOSHUA COHEN

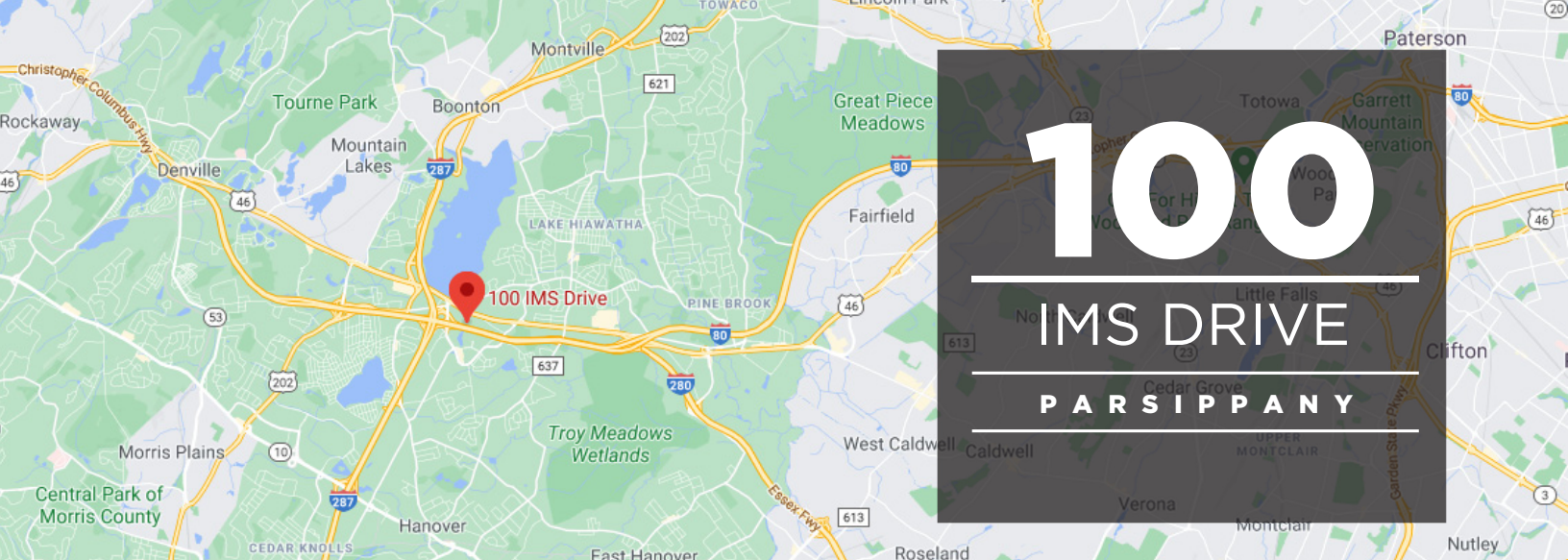
Managing Director
973 292 4618
josh.cohen@cushwake.com

TODD A. ELFAND

Executive Managing Director
732 452 6187
todd.elfand@cushwake.com

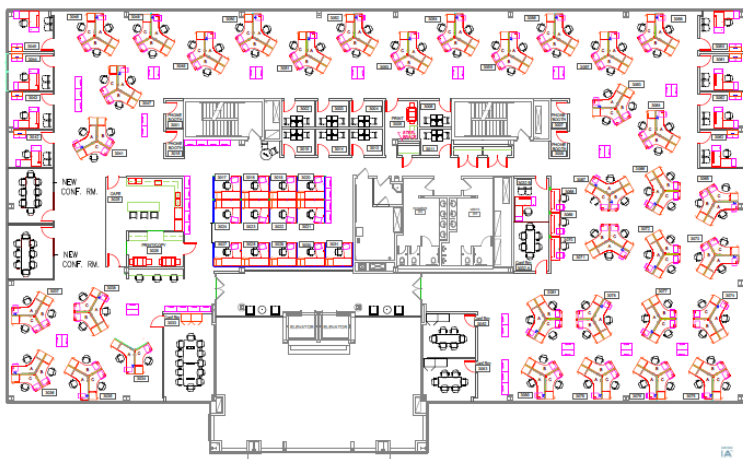
99 Wood Avenue South, Suite 800
Iselin, NJ 08830, USA
cushmanwakefield.com



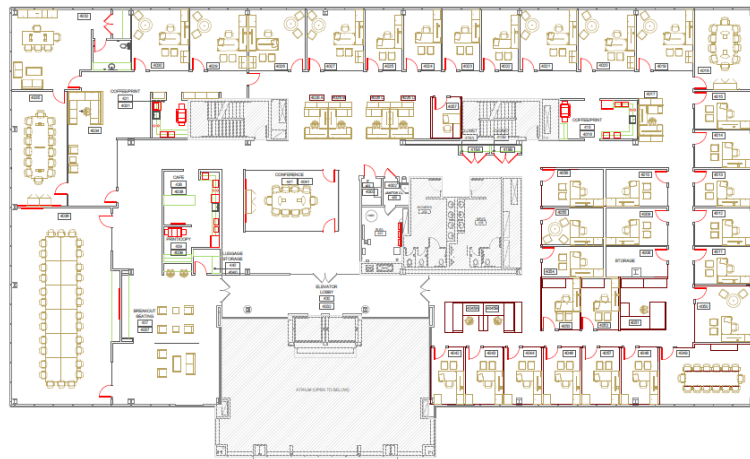


FLOOR PLANS:

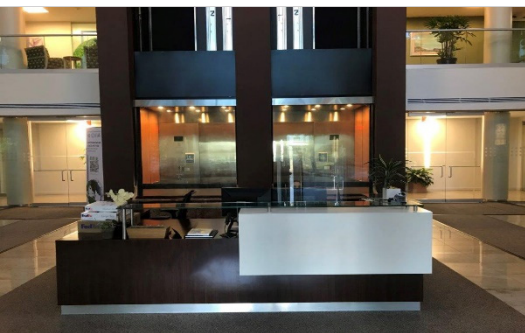
TYPICAL FLOOR: $\pm 20,870$ SF



EXECUTIVE FLOOR: $\pm 20,870$ SF



SPACE IMAGES:



FOR INFORMATION, PLEASE CONTACT:

PAUL E. GIANNONE

Executive Managing Director
732 452 6184
paul.giannone@cushwake.com

JOSHUA COHEN

Managing Director
973 292 4618
josh.cohen@cushwake.com

TODD A. ELFAND

Executive Managing Director
732 452 6187
todd.elfand@cushwake.com

99 Wood Avenue South, Suite 800
Iselin, NJ 08830, USA
cushmanwakefield.com

