

- ±32,000 SF AVAILABLE FOR LEASE
- NEW CONSTRUCTION - APRIL 2026 DELIVERY
- CLOSE PROXIMITY TO DOWNTOWN & JOHNSON COUNTY

# 1920

FOXTRIDGE DR

KANSAS CITY, KANSAS



# 1920 FOXRIDGE

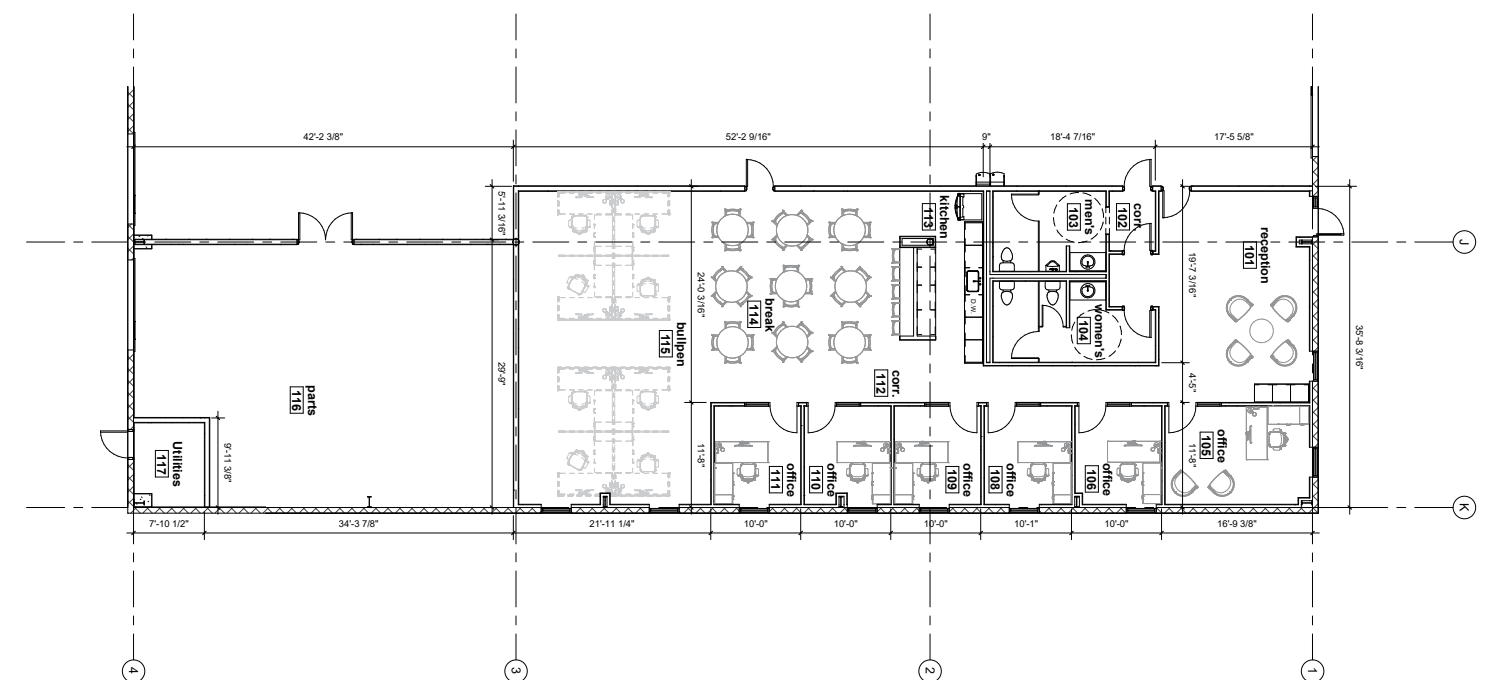
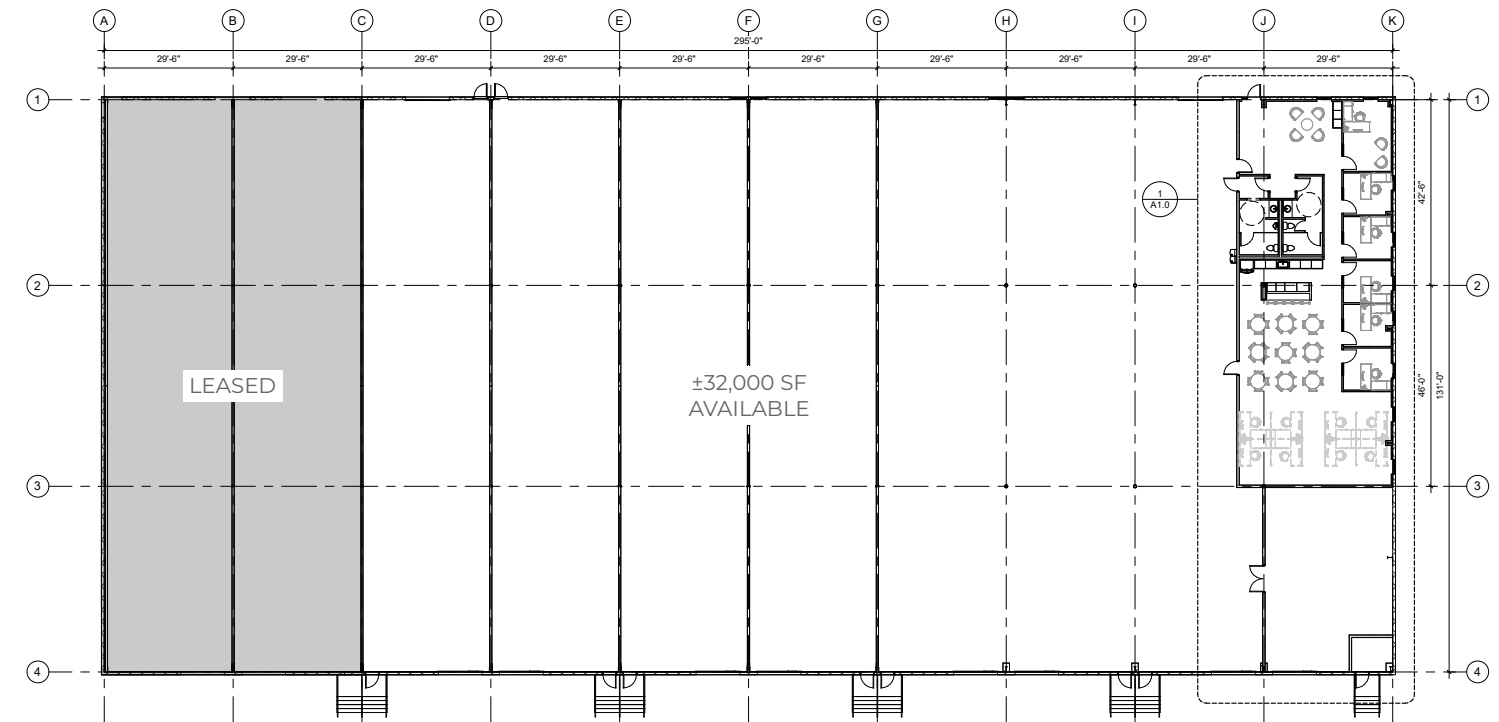
±32,000 SF - LAMAR & I-35

<b>BUILDING SIZE:</b>	±32,000 SF (±3,164 SF of Office)
<b>CLEAR HEIGHT:</b>	20-21'
<b>LOADING:</b>	Eight (8) 8' x 9' Dock-high Doors Two (2) 12' x 14' Drive-in Doors, Auto-openers
<b>NEW CONSTRUCTION:</b>	April 2026 Delivery
<b>OFFICE BUILDOUT:</b>	See Proposed Speculative Office Floor Plan Potential for build-to-suit
<b>HIGHWAY ACCESS:</b>	Immediate Access to I-35 & Lamar
<b>LEASE RATE:</b>	\$7.25 PSF NNN
<b>TAXES:</b>	\$2.03 PSF*
<b>INSURANCE:</b>	\$0.31 PSF*
<b>CAM:</b>	\$1.00 PSF*

\*Estimated based upon 2026 Budget, subject to variability.



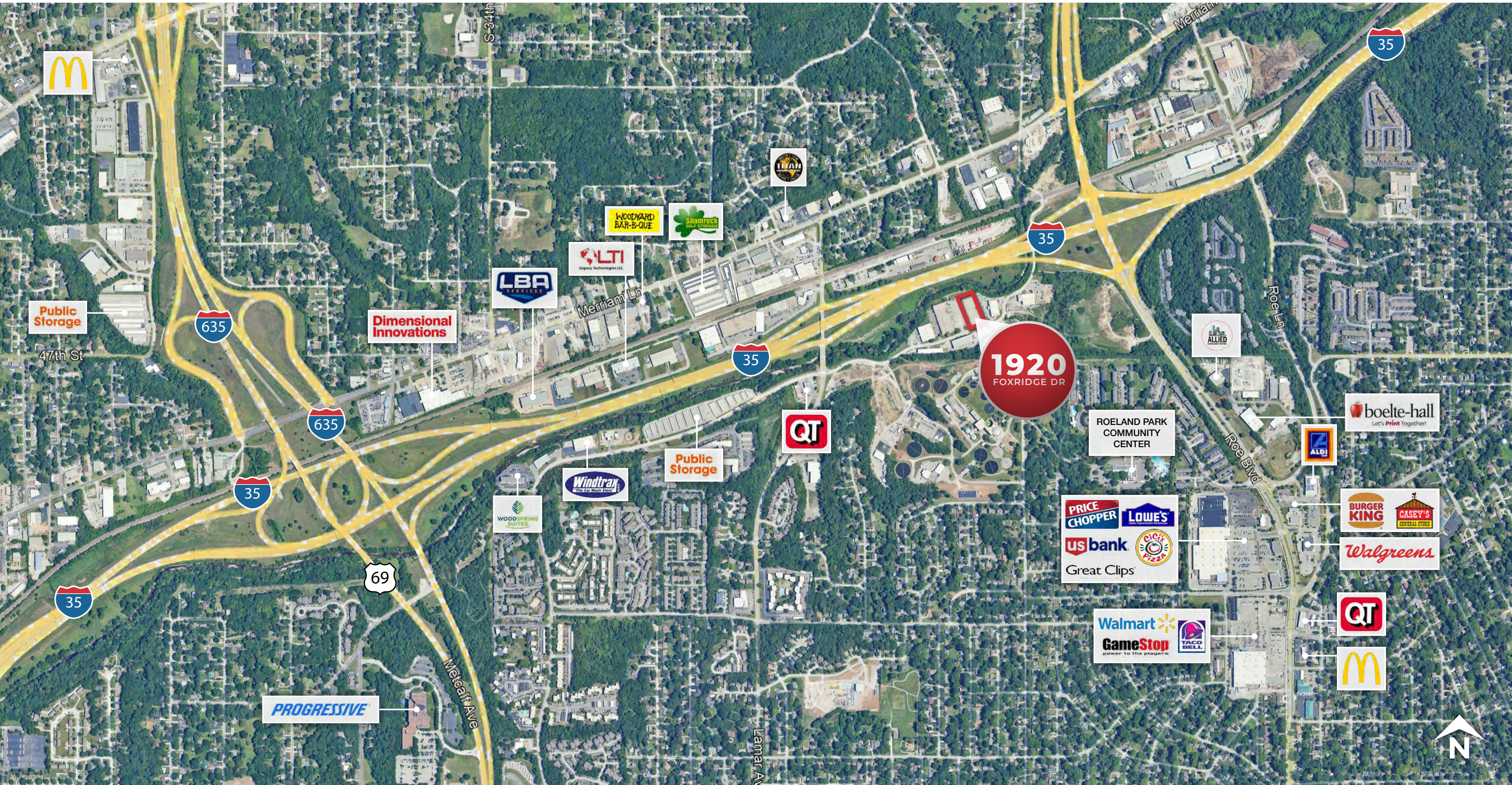
Photos of new construction in progress January 2026.



Proposed Speculative ±3,164 SF Office Floor Plan

# 1920 FOXRIDGE

±32,000 SF - LAMAR & I-35



# 1920 FOXRIDGE

±32,000 SF - LAMAR & I-35

## DRIVE TIMES

**2 MINUTES**  
INTERSTATE 35

**4 MINUTES**  
JOHNSON COUNTY

**6 MINUTES**  
INTERSTATE 70

**8 MINUTES**  
DOWNTOWN

**NAI Heartland**

NO WARRANTY OR REPRESENTATION, EXPRESS OR IMPLIED, IS MADE AS TO THE ACCURACY OF THE INFORMATION CONTAINED HEREIN, AND THE SAME IS SUBMITTED SUBJECT TO ERRORS, OMISSIONS, CHANGE OF PRICE, RENTAL OR OTHER CONDITIONS, PRIOR SALE, LEASE OR FINANCING, OR WITHDRAWAL WITHOUT NOTICE, AND OF ANY SPECIAL LISTING CONDITIONS IMPOSED BY OUR PRINCIPALS NO WARRANTIES OR REPRESENTATIONS ARE MADE AS TO THE CONDITION OF THE PROPERTY OR ANY HAZARDS CONTAINED THEREIN ARE ANY TO BE IMPLIED.

