

FOR LEASE

ORCHARDS EXECUTIVE PARK



ORCHARDS EXECUTIVE PARK
22630-22670 HAGGERTY ROAD
FARMINGTON HILLS, MI 48335

PROPERTY HIGHLIGHTS:

- Several suites available up to 32,877 SF
- Office and R&D space with overhead doors available
- Ideal corporate headquarters
- All-brick construction with modern reflective glass
- Centrally located on Haggerty between 9 Mile and 10 Mile roads
- Quick access to I-275, M-5, I-696, and M-14
- Building signage available that is visible from I-275
- Independent suite entries

The information provided herein along with any attachment(s) was obtained from sources believed to be reliable, however, Friedman Real Estate makes no guarantees, warranties, or representations as to the completeness or accuracy of such information and legal counsel is advised. All information provided is subject to verification and no liability for reliance on such information or errors or omissions is assumed. The presentation of this property is submitted subject to errors, omissions, change of price or conditions, prior sale or lease, or withdrawal without notice. Copyright © 2025 Friedman Real Estate. All rights reserved.

FOR MORE INFORMATION PLEASE CONTACT:



TODD HAWLEY
todd.hawley@freg.com



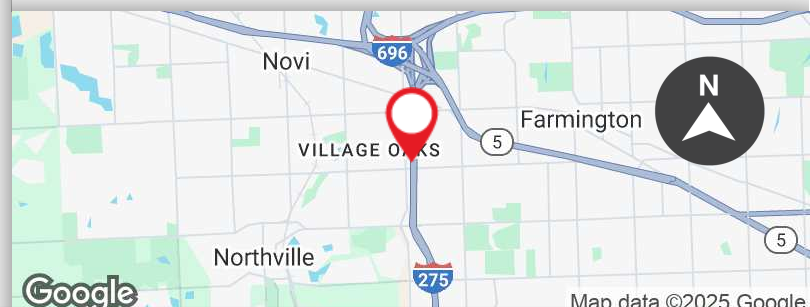
ROBERT GAGNIUK
robert.gagniuk@freg.com



JORDAN FRIEDMAN
jordan.friedman@freg.com

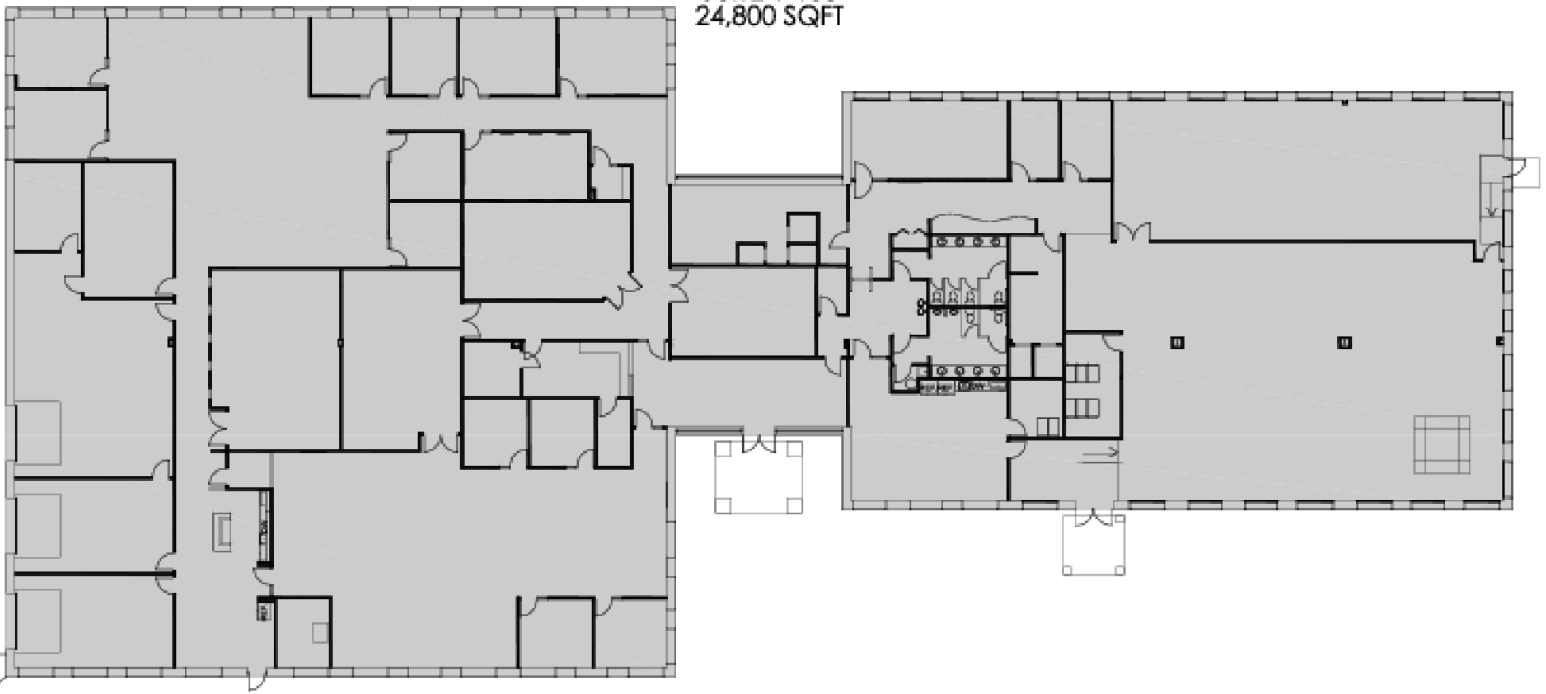
248.324.2000

eCODE 035



ORCHARDS EXECUTIVE PARK PROPERTY **FLOOR PLAN**

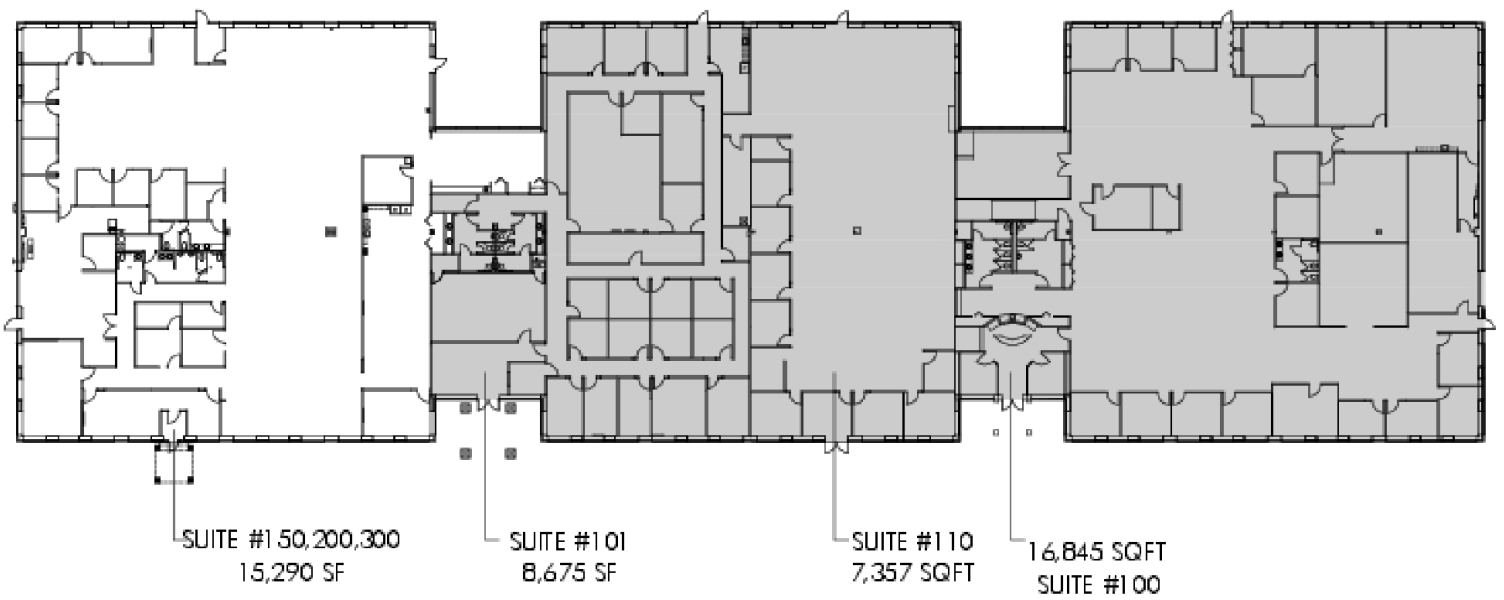
SUITE 1-150
24,800 SQFT



File: 22630 Haggerty-Orchard Exec.dwg
Date: Mar 11 2025
Time: 9:34:28

DO NOT SCALE

ORCHARDS EXECUTIVE PARK PROPERTY **FLOOR PLAN**



DO NOT SCALE



FOR MORE INFORMATION **PLEASE CONTACT:**



TODD HAWLEY
todd.hawley@freg.com



ROBERT GAGNIUK
robert.gagniuk@freg.com



JORDAN FRIEDMAN
jordan.friedman@freg.com