

1070 W WOOD STREET - SUITE B | WILLOWS, CA

±1,725 SF Well-Maintained Professional Office Suite For Lease



This ±1,725 SF professional office suite offers a functional layout with reception, multiple private offices, kitchenette, storage, and open workspace. Large front windows provide abundant natural light, and the space is suitable for professional, medical, or administrative uses.

Located along a main Willows thoroughfare, the property provides strong visibility, easy access, and ample on-site parking. Nearby amenities include restaurants, retail, and essential services, making this an accessible and turnkey option for local businesses.

- **\$1,885 per month NNN**
- Flexible layout with offices, open area, & room for multiple uses
- Excellent visibility with easy access from main Willows streets
- Ample on-site parking available for staff, clients, and visitors



© Capital Rivers Commercial | DRE #01522447

This information has been obtained from sources believed reliable. We have not verified it and make no guarantee, warranty or representation about it.

CARRIE WELCH, CCIM

Director of Sales & Leasing
530.570.5107
carrie@capitalrivers.com
DRE #01926238

OFFICE:

250 Vallombrosa Avenue
Suite 450
Chico, CA 95926
capitalrivers.com

KELSEY WATT, MS

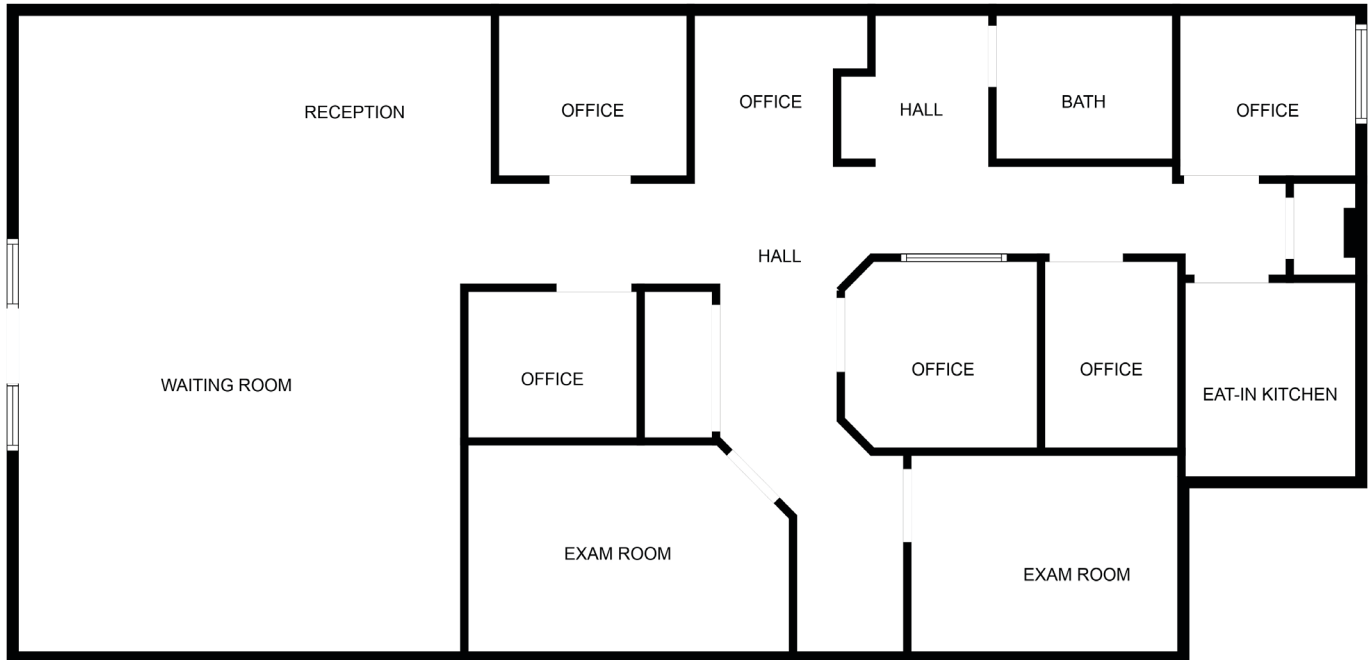
Director of Sales & Leasing
530.908.4905
kelsey@capitalrivers.com
DRE #02035244

1070 W WOOD STREET - SUITE B | WILLOWS, CA

±1,725 SF Well-Maintained Professional Office Suite For Lease



FLOOR PLAN



PHOTOS



© Capital Rivers Commercial | DRE #01522447

This information has been obtained from sources believed reliable. We have not verified it and make no guarantee, warranty or representation about it.

CARRIE WELCH, CCIM

Director of Sales & Leasing
530.570.5107
carrie@capitalrivers.com
DRE #01926238

OFFICE:

250 Vallombrosa Avenue
Suite 450
Chico, CA 95926
capitalrivers.com

KELSEY WATT, MS

Director of Sales & Leasing
530.908.4905
kelsey@capitalrivers.com
DRE #02035244