

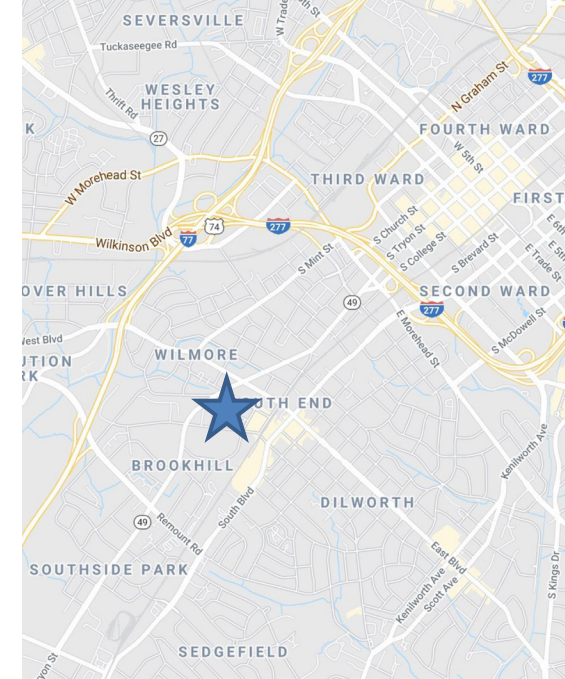
CAMDEN SQUARE VILLAGE WEST

1950 ABBOTT STREET, SUITE 604, CHARLOTTE, NC

OFFICE SPACE
FOR LEASE

NS New South
Properties




± 1,816 SF OFFICE SPACE AVAILABLE | SUITE 604



PROPERTY HIGHLIGHTS

- Located in the heart of South End
- Loft-style office condo with one office and break room
- Abundant natural light
- Walkable amenities include light rail, Superica, Leroy Fox, Common Market, Puttery, Barcelona Wine Bar, Trolley Barn and Blaze Pizza.
- \$32/SF net utilities

DEMOGRAPHICS (2024)

	1 Mile	3 Miles	5 Miles
 Population	21,476	125,317	256,802
 Households	\$151,031	\$153,914	\$144,647
 Avg. HH Income	23,003	153,335	298,590

BROKER CONTACT

HOLLY ALEXANDER
704.927.2884
halexander@newsouthprop.com

KENNY SMITH
704.927.2882
ksmith@newsouthprop.com



"The information contained herein was obtained from sources believed reliable, however, no guarantees, warranties, or representations have been made as to the completeness or accuracy thereof. No liability assumed for error or omissions."

CAMDEN SQUARE VILLAGE WEST

1950 ABBOTT STREET, SUITE 604, CHARLOTTE, NC

AERIAL

NS New South Properties

NEWSOUTHPROP.COM

± 1,816 SF OFFICE SPACE AVAILABLE | SUITE 604



Atherton Mill
ANTHROPOLOGIE
lululemon SEPHORA
CAVA *Sola* drybar
BARRY'S west elm

"The information contained herein was obtained from sources believed reliable, however, no guarantees, warranties, or representations have been made as to the completeness or accuracy thereof. No liability assumed for error or omissions."



KENNY SMITH | 704.927.2882 | ksmith@newsouthprop.com
HOLLY ALEXANDER | 704.927.2884 | halexander@newsouthprop.com

CAMDEN SQUARE VILLAGE WEST

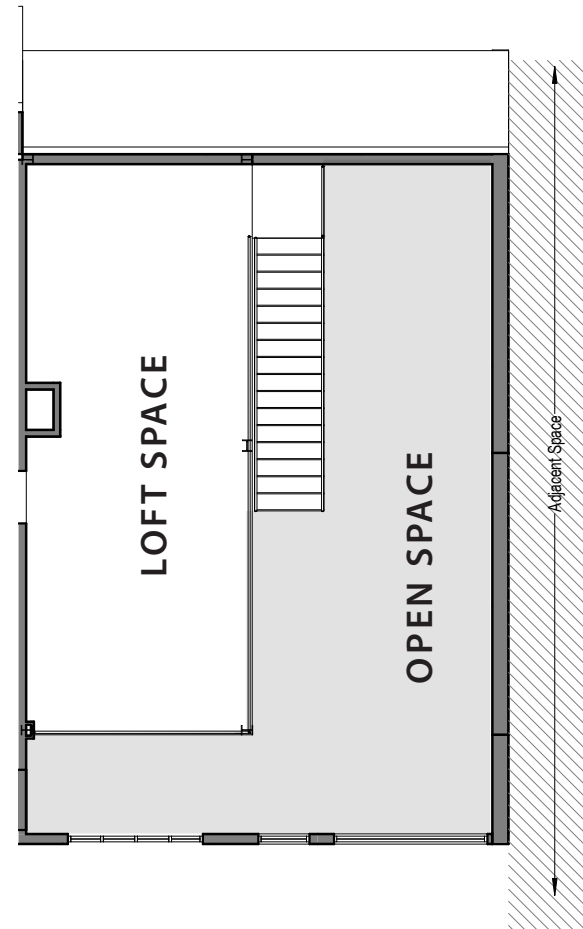
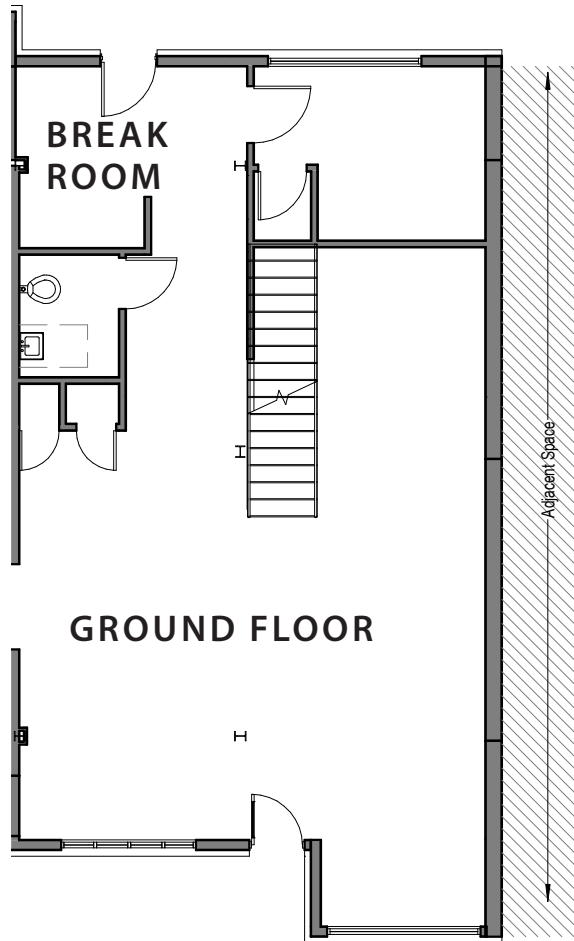
1950 ABBOTT STREET, SUITE 604, CHARLOTTE, NC

FLOOR PLAN

NS New South
Properties

NEWSOUTHPROP.COM

± 1,816 SF OFFICE SPACE AVAILABLE | SUITE 604



"The information contained herein was obtained from sources believed reliable, however, no guarantees, warranties, or representations have been made as to the completeness or accuracy thereof. No liability assumed for error or omissions."



KENNY SMITH | 704.927.2882 | ksmith@newsouthprop.com
HOLLY ALEXANDER | 704.927.2884 | halexander@newsouthprop.com