

800 - 6,200 SF

HIGH END RESTAURANT / RETAIL



FOR LEASE



## 607 Shelby Street

Detroit, Michigan 48226

### Property Highlights

- High-End Restaurant/Bar
- Iconic Mixed-Use Building
- Walk to Huntington Center/Hotels
- Beautiful Dining Room
- Second-Floor Dining and Bar with Above the Street View
- Full Kitchen with Equipment and Two Walk-In Coolers
- Adjacent to Many Other Restaurants and Bars
- Plenty of Area Parking
- FF & E and Liquor License Available
- Prime Downtown Location

### OFFERING SUMMARY

Lease Rate:	\$8.00 - 28.00 SF/yr (NNN)
Available SF:	800 - 6,200 SF
Building Size:	50,407 SF

### DEMOGRAPHICS

	1 MILE	3 MILES	5 MILES
Total Households	6,491	34,564	77,783
Total Population	9,887	65,736	180,409
Average HH Income	\$97,030	\$62,920	\$56,643



Commercial Real Estate Services, Worldwide.

www.naifarbman.com

**Rick Ax**

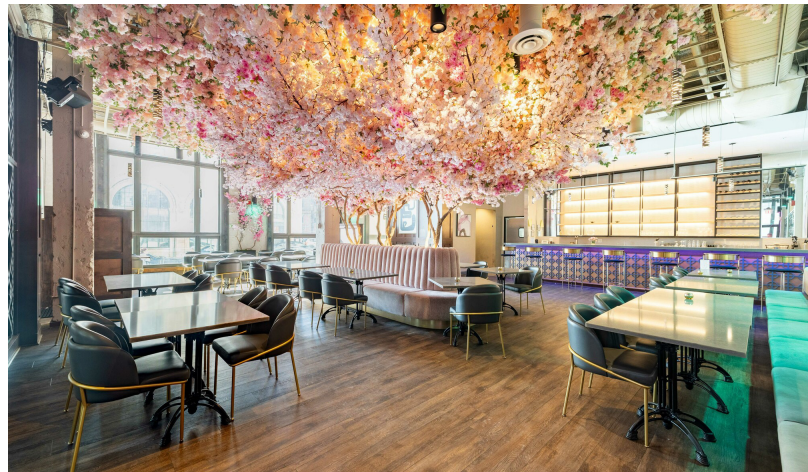
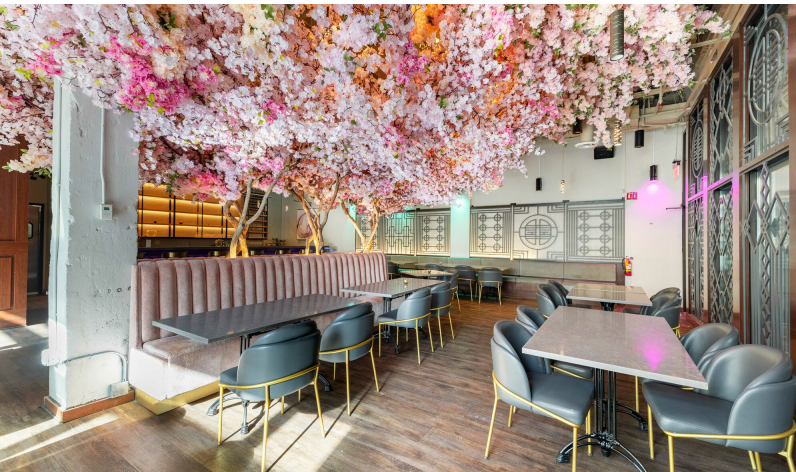
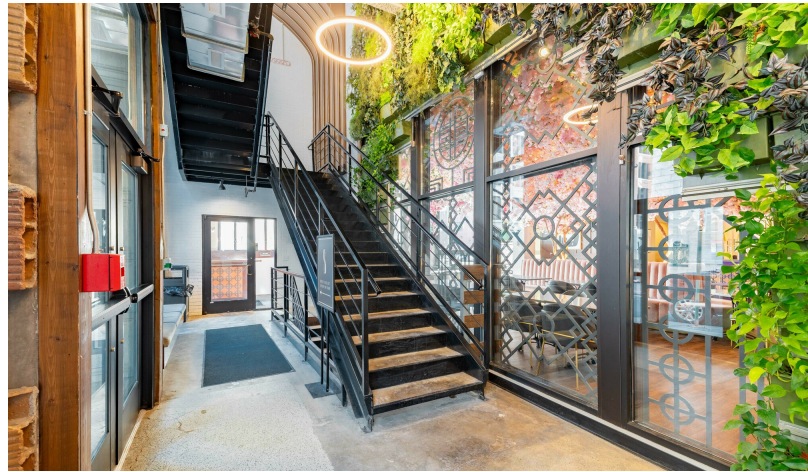
Associate Broker | 248.351.6319  
ax@farbman.com

NO WARRANTY, EXPRESS OR IMPLIED, IS MADE AS TO THE ACCURACY OF THE INFORMATION CONTAINED HEREIN. THIS INFORMATION IS SUBMITTED SUBJECT TO ERRORS, OMISSIONS, CHANGE OF PRICE, RENTAL OR OTHER CONDITIONS, WITHDRAWAL WITHOUT NOTICE, AND IS SUBJECT TO ANY SPECIAL LISTING CONDITIONS IMPOSED BY OUR PRINCIPALS, COOPERATING BROKERS, BUYERS, TENANTS AND OTHER PARTIES WHO RECEIVE THIS DOCUMENT SHOULD NOT RELY ON IT, BUT SHOULD USE IT AS A STARTING POINT OF ANALYSIS, AND SHOULD INDEPENDENTLY CONFIRM THE ACCURACY OF THE INFORMATION CONTAINED HEREIN THROUGH A DUE DILIGENCE REVIEW OF THE BOOKS, RECORDS, FILES AND DOCUMENTS THAT CONSTITUTE RELIABLE SOURCES OF THE INFORMATION DESCRIBED HEREIN. LOGOS ARE FOR IDENTIFICATION PURPOSES ONLY AND MAY BE TRADEMARKS OF THEIR RESPECTIVE COMPANIES. NAI Farbman, INC. CA BRE LIC. #01990696.

# 800 - 6,200 SF HIGH END RESTAURANT / RETAIL



## FOR LEASE



**NAI Farbman**  
Commercial Real Estate Services, Worldwide.

[www.naifarbman.com](http://www.naifarbman.com)

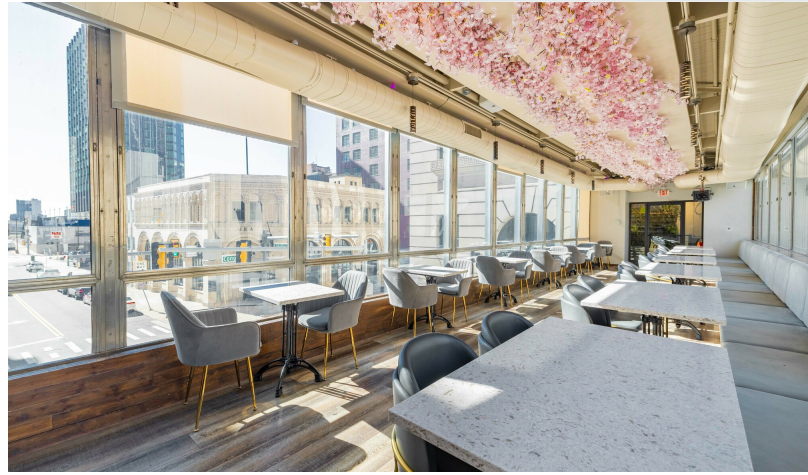
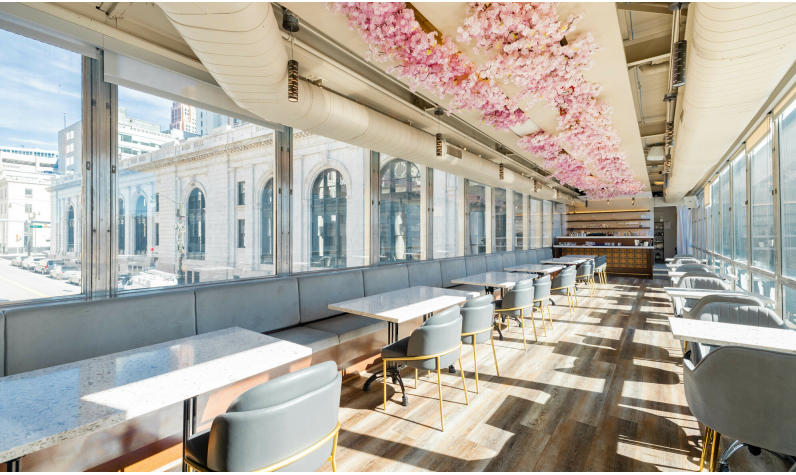
**Rick Ax**  
Associate Broker | 248.351.6319  
[ax@farbman.com](mailto:ax@farbman.com)

NO WARRANTY, EXPRESS OR IMPLIED, IS MADE AS TO THE ACCURACY OF THE INFORMATION CONTAINED HEREIN. THIS INFORMATION IS SUBMITTED SUBJECT TO ERRORS, OMISSIONS, CHANGE OF PRICE, RENTAL OR OTHER CONDITIONS, WITHDRAWAL WITHOUT NOTICE, AND IS SUBJECT TO ANY SPECIAL LISTING CONDITIONS IMPOSED BY OUR PRINCIPALS. COOPERATING BROKERS, BUYERS, TENANTS AND OTHER PARTIES WHO RECEIVE THIS DOCUMENT SHOULD NOT RELY ON IT, BUT SHOULD USE IT AS A STARTING POINT OF ANALYSIS, AND SHOULD INDEPENDENTLY CONFIRM THE ACCURACY OF THE INFORMATION CONTAINED HEREIN THROUGH A DUE DILIGENCE REVIEW OF THE BOOKS, RECORDS, FILES AND DOCUMENTS THAT CONSTITUTE RELIABLE SOURCES OF THE INFORMATION DESCRIBED HEREIN. LOGOS ARE FOR IDENTIFICATION PURPOSES ONLY AND MAY BE TRADEMARKS OF THEIR RESPECTIVE COMPANIES. NAI Farbman, INC. CA BRE LIC. #01990696.

# 800 - 6,200 SF HIGH END RESTAURANT / RETAIL



## FOR LEASE



**NAI Farbman**  
Commercial Real Estate Services, Worldwide.

[www.naifarbman.com](http://www.naifarbman.com)

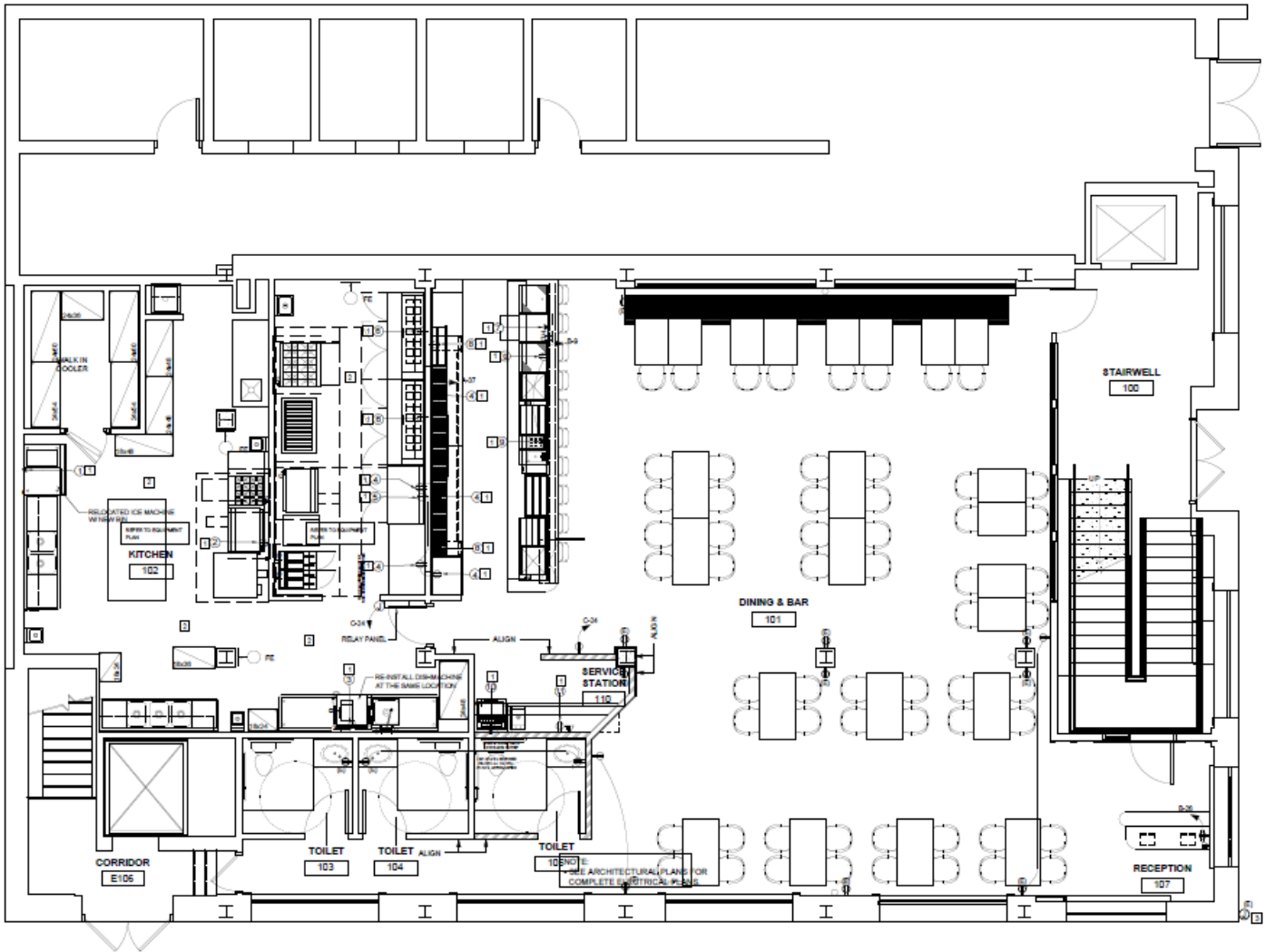
**Rick Ax**  
Associate Broker | 248.351.6319  
[ax@farbman.com](mailto:ax@farbman.com)

NO WARRANTY, EXPRESS OR IMPLIED, IS MADE AS TO THE ACCURACY OF THE INFORMATION CONTAINED HEREIN. THIS INFORMATION IS SUBMITTED SUBJECT TO ERRORS, OMISSIONS, CHANGE OF PRICE, RENTAL OR OTHER CONDITIONS, WITHDRAWAL WITHOUT NOTICE, AND IS SUBJECT TO ANY SPECIAL LISTING CONDITIONS IMPOSED BY OUR PRINCIPALS, COOPERATING BROKERS, BUYERS, TENANTS AND OTHER PARTIES WHO RECEIVE THIS DOCUMENT SHOULD NOT RELY ON IT, BUT SHOULD USE IT AS A STARTING POINT OF ANALYSIS, AND SHOULD INDEPENDENTLY CONFIRM THE ACCURACY OF THE INFORMATION CONTAINED HEREIN THROUGH A DUE DILIGENCE REVIEW OF THE BOOKS, RECORDS, FILES AND DOCUMENTS THAT CONSTITUTE RELIABLE SOURCES OF THE INFORMATION DESCRIBED HEREIN. LOGOS ARE FOR IDENTIFICATION PURPOSES ONLY AND MAY BE TRADEMARKS OF THEIR RESPECTIVE COMPANIES. NAI Farbman, INC. CA BRE LIC. #01990696.

# 800 - 6,200 SF HIGH END RESTAURANT / RETAIL



## FOR LEASE

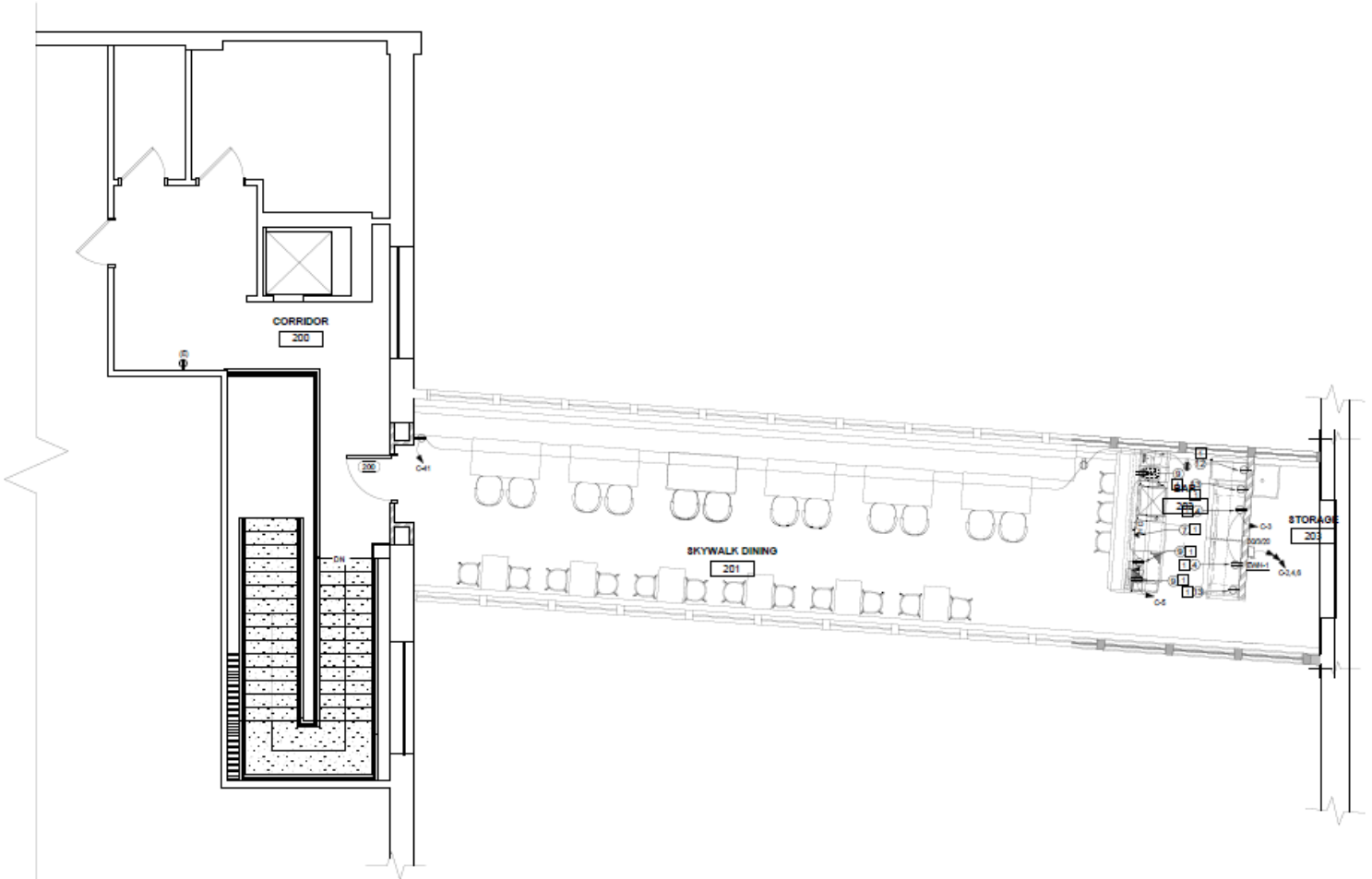


1 MAIN FLOOR PLAN - POWER  
E2.1 1/4" = 1'-0"

# 800 - 6,200 SF HIGH END RESTAURANT / RETAIL



## FOR LEASE

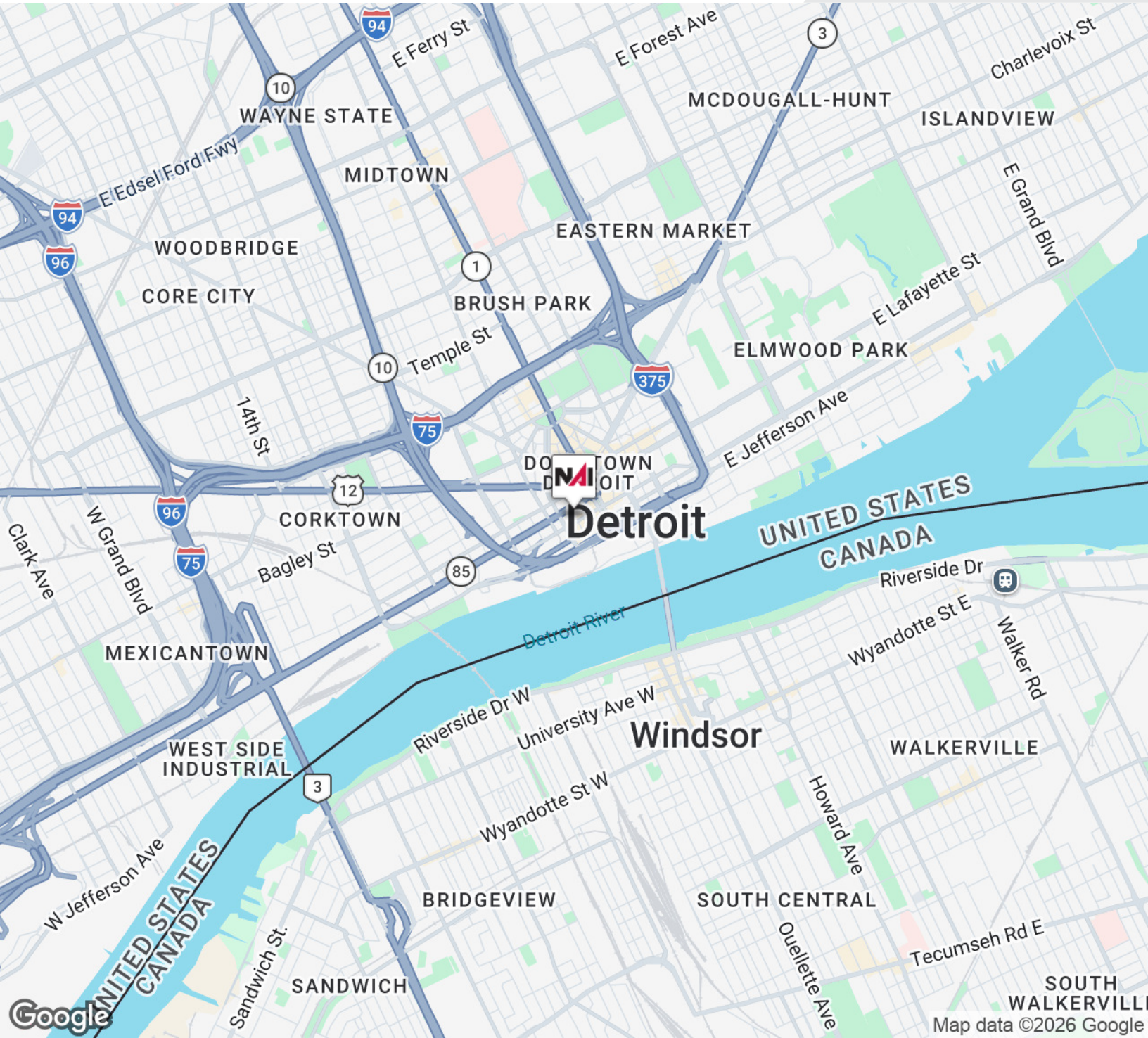


1 SECOND FLOOR PLAN - POWER  
E22 1/4" = 1'-0"

800 - 6,200 SF  
HIGH END RESTAURANT / RETAIL



**FOR LEASE**



Commercial Real Estate Services, Worldwide.

www.naifarbman.com

**Rick Ax**  
Associate Broker | 248.351.6319  
ax@farbman.com

NO WARRANTY, EXPRESS OR IMPLIED, IS MADE AS TO THE ACCURACY OF THE INFORMATION CONTAINED HEREIN. THIS INFORMATION IS SUBMITTED SUBJECT TO ERRORS, OMISSIONS, CHANGE OF PRICE, RENTAL OR OTHER CONDITIONS, WITHDRAWAL WITHOUT NOTICE, AND IS SUBJECT TO ANY SPECIAL LISTING CONDITIONS IMPOSED BY OUR PRINCIPALS, COOPERATING BROKERS, BUYERS, TENANTS AND OTHER PARTIES WHO RECEIVE THIS DOCUMENT SHOULD NOT RELY ON IT, BUT SHOULD USE IT AS A STARTING POINT OF ANALYSIS, AND SHOULD INDEPENDENTLY CONFIRM THE ACCURACY OF THE INFORMATION CONTAINED HEREIN THROUGH A DUE DILIGENCE REVIEW OF THE BOOKS, RECORDS, FILES AND DOCUMENTS THAT CONSTITUTE RELIABLE SOURCES OF THE INFORMATION DESCRIBED HEREIN. LOGOS ARE FOR IDENTIFICATION PURPOSES ONLY AND MAY BE TRADEMARKS OF THEIR RESPECTIVE COMPANIES. NAI Farbman, INC. CA BRE LIC. #01990996.

800 - 6,200 SF  
HIGH END RESTAURANT / RETAIL



# 800 - 6,200 SF HIGH END RESTAURANT / RETAIL



## FOR LEASE



### POPULATION

	1 MILE	3 MILES	5 MILES
Total Population	9,887	65,736	180,409
Average Age	42	40	38
Average Age (Male)	42	39	37
Average Age (Female)	42	40	38

### HOUSEHOLDS & INCOME

	1 MILE	3 MILES	5 MILES
Total Households	6,491	34,564	77,783
# of Persons per HH	1.5	1.9	2.3
Average HH Income	\$97,030	\$62,920	\$56,643
Average House Value	\$422,992	\$309,761	\$215,120

Demographics data derived from AlphaMap



Commercial Real Estate Services, Worldwide.

www.naifarberman.com

**Rick Ax**

Associate Broker | 248.351.6319  
ax@farberman.com

NO WARRANTY, EXPRESS OR IMPLIED, IS MADE AS TO THE ACCURACY OF THE INFORMATION CONTAINED HEREIN. THIS INFORMATION IS SUBMITTED SUBJECT TO ERRORS, OMISSIONS, CHANGE OF PRICE, RENTAL OR OTHER CONDITIONS, WITHDRAWAL WITHOUT NOTICE, AND IS SUBJECT TO ANY SPECIAL LISTING CONDITIONS IMPOSED BY OUR PRINCIPALS, COOPERATING BROKERS, BUYERS, TENANTS AND OTHER PARTIES WHO RECEIVE THIS DOCUMENT SHOULD NOT RELY ON IT, BUT SHOULD USE IT AS A STARTING POINT OF ANALYSIS, AND SHOULD INDEPENDENTLY CONFIRM THE ACCURACY OF THE INFORMATION CONTAINED HEREIN THROUGH A DUE DILIGENCE REVIEW OF THE BOOKS, RECORDS, FILES AND DOCUMENTS THAT CONSTITUTE RELIABLE SOURCES OF THE INFORMATION DESCRIBED HEREIN. LOGOS ARE FOR IDENTIFICATION PURPOSES ONLY AND MAY BE TRADEMARKS OF THEIR RESPECTIVE COMPANIES. NAI Farberman, INC. CA BRE LIC. #01990696.