

RETAIL PROPERTY FOR LEASE

LANTERN POINTE MIXED-USE PROJECT

161st Street & Union Blvd, Westfield, IN 46074

FOR MORE INFORMATION, CONTACT:

GARY PEREL

Principal
317.853.7505
Gary@alopg.com



PROPERTY SUMMARY

For Lease | Lantern Pointe, 161st Street & Union Blvd, Westfield, IN 46074

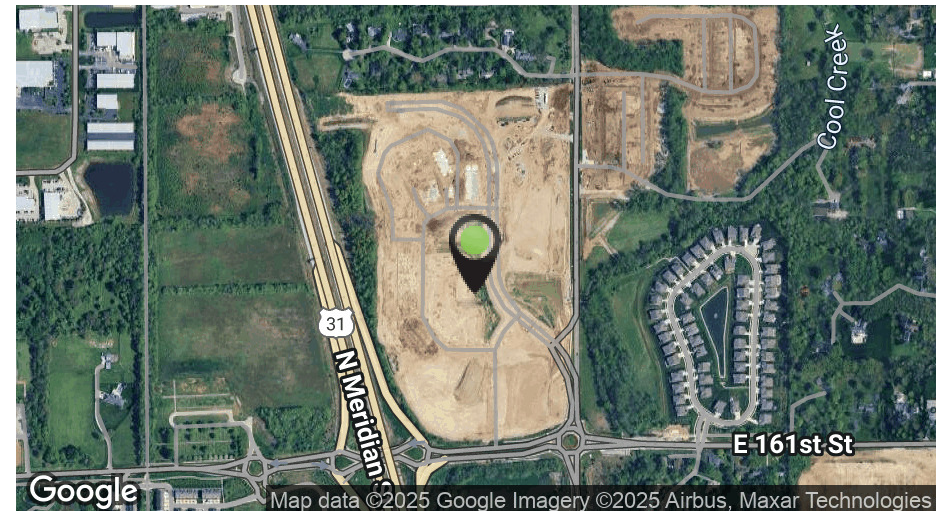


PROJECT DESCRIPTION

Introducing Lantern Pointe, Westfield's next great dining and shopping destination. Perfectly situated at 161st Street and Union Blvd, just off US-31, this highly anticipated mixed-use development will serve as the gateway to Downtown Westfield and a vibrant new hub for local and regional visitors alike.

Lantern Pointe will feature two four-story mixed-use buildings with upscale apartment residences above ground-floor restaurant and retail space, plus a stand-alone 5,224 SF restaurant building that offers exceptional visibility and access. With 29,142 SF of prime retail and 1,809 SF of boutique office space available for lease, this project is designed to become the go-to gathering place for Westfield's rapidly growing community.

Lantern Pointe blends modern design, pedestrian-friendly streetscapes, and outdoor gathering areas to create an inviting, energetic environment for restaurants, cafés, boutiques, and specialty retailers. The 102 luxury apartments above the retail level provide built-in clientele, while its proximity to Grand Park—a destination drawing over 2 million visitors annually—ensures strong, year-round traffic.



GARY PEREL
Principal
Gary@alopg.com
C: 317.698.8446

ALO Property Group
9075 N. Meridian St., Ste. 175
Indianapolis, IN 46260
317.853.7500
www.alopg.com



Although all information furnished regarding property for sale, rental, or financing is from sources deemed reliable, such information has not been verified and no express representation is made nor is any to be implied as to the accuracy thereof. It is submitted subject to errors, omissions, changes of price, rental, or other conditions, prior sale, lease, or financing, or withdrawal without notice, and to any special conditions imposed by our principal.

PROJECT RENDERINGS

For Lease | Lantern Pointe, 161st Street & Union Blvd, Westfield, IN 46074



GARY PEREL
Principal
Gary@alopg.com
C: 317.698.8446

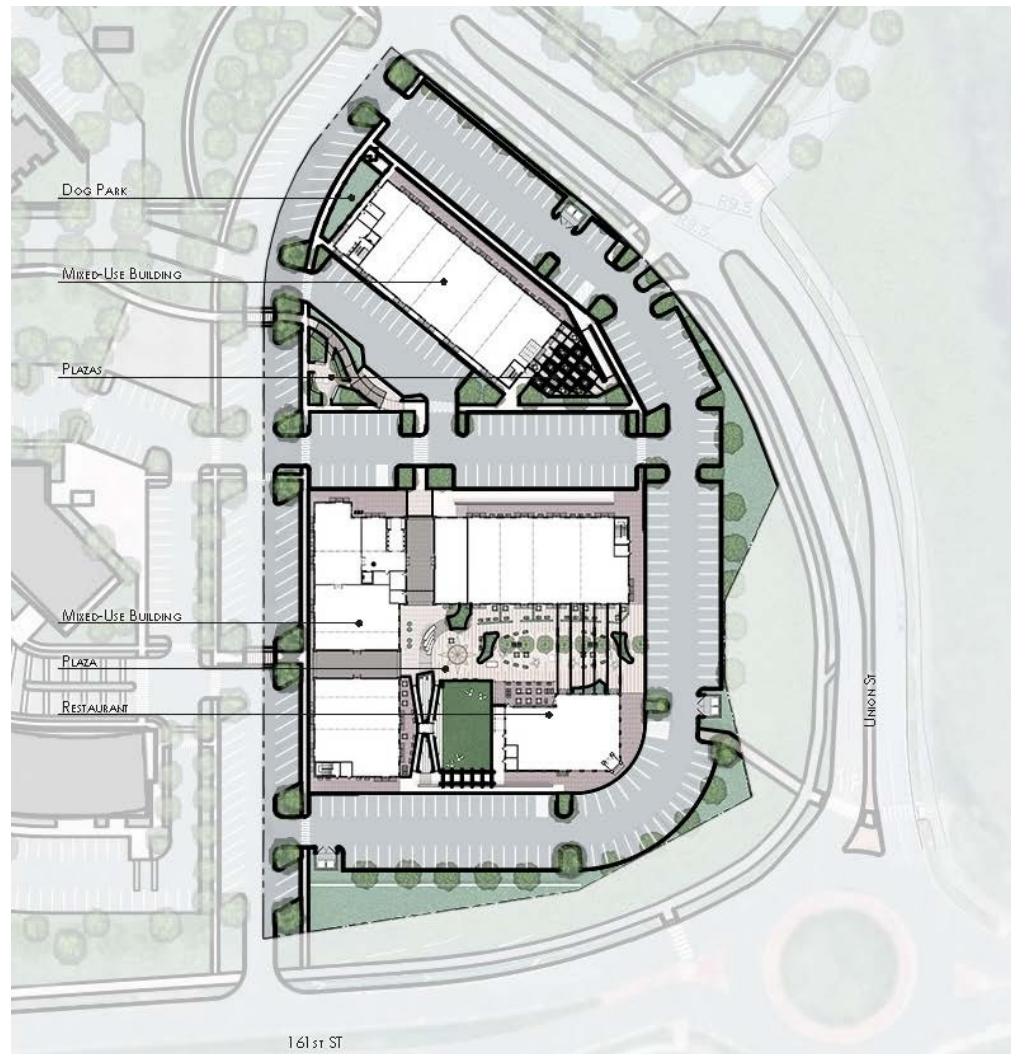
ALO Property Group
9075 N. Meridian St., Ste. 175
Indianapolis, IN 46260
317.853.7500
www.alopg.com



Although all information furnished regarding property for sale, rental, or financing is from sources deemed reliable, such information has not been verified and no express representation is made nor is any to be implied as to the accuracy thereof. It is submitted subject to errors, omissions, changes of price, rental, or other conditions, prior sale, lease, or financing, or withdrawal without notice, and to any special conditions imposed by our principal.

CONCEPT SITE PLAN

For Lease | Lantern Pointe, 161st Street & Union Blvd, Westfield, IN 46074



GARY PEREL
Principal
Gary@alopg.com
C: 317.698.8446

ALO Property Group
9075 N. Meridian St., Ste. 175
Indianapolis, IN 46260
317.853.7500
www.alopg.com



Although all information furnished regarding property for sale, rental, or financing is from sources deemed reliable, such information has not been verified and no express representation is made nor is any to be implied as to the accuracy thereof. It is submitted subject to errors, omissions, changes of price, rental, or other conditions, prior sale, lease, or financing, or withdrawal without notice, and to any special conditions imposed by our principal.

LOCATION MAP

For Lease | Lantern Pointe, 161st Street & Union Blvd, Westfield, IN 46074



GARY PEREL
Principal
Gary@alopg.com
C: 317.698.8446

ALO Property Group
9075 N. Meridian St., Ste. 175
Indianapolis, IN 46260
317.853.7500
www.alopg.com



Although all information furnished regarding property for sale, rental, or financing is from sources deemed reliable, such information has not been verified and no express representation is made nor is any to be implied as to the accuracy thereof. It is submitted subject to errors, omissions, changes of price, rental, or other conditions, prior sale, lease, or financing, or withdrawal without notice, and to any special conditions imposed by our principal.