

FOR SALE 34.21 ACRES

**1472 COURTHOUSE RD.**

**STAFFORD, VA**



**CUSHMAN &  
WAKEFIELD**

**THALHIMER**



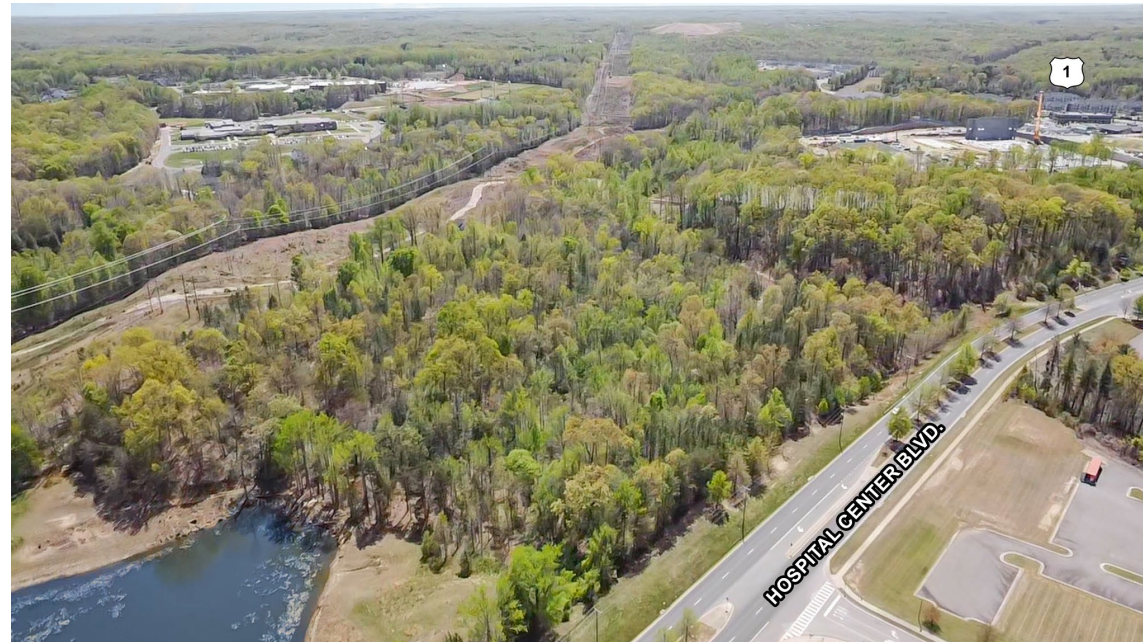
# 1472 COURTHOUSE RD.

## STAFFORD, VA

### Property Features

Located at the intersection of Courthouse Rd. and Hospital Blvd. in Stafford. Less than 0.6 miles to Stafford Hospital, 0.7 miles to Rt. 1 and 1 mile to I-95, exit 140.

<b>Site Size:</b>	34.21 acres
<b>Utilities:</b>	Public
<b>Zoning:</b>	A1

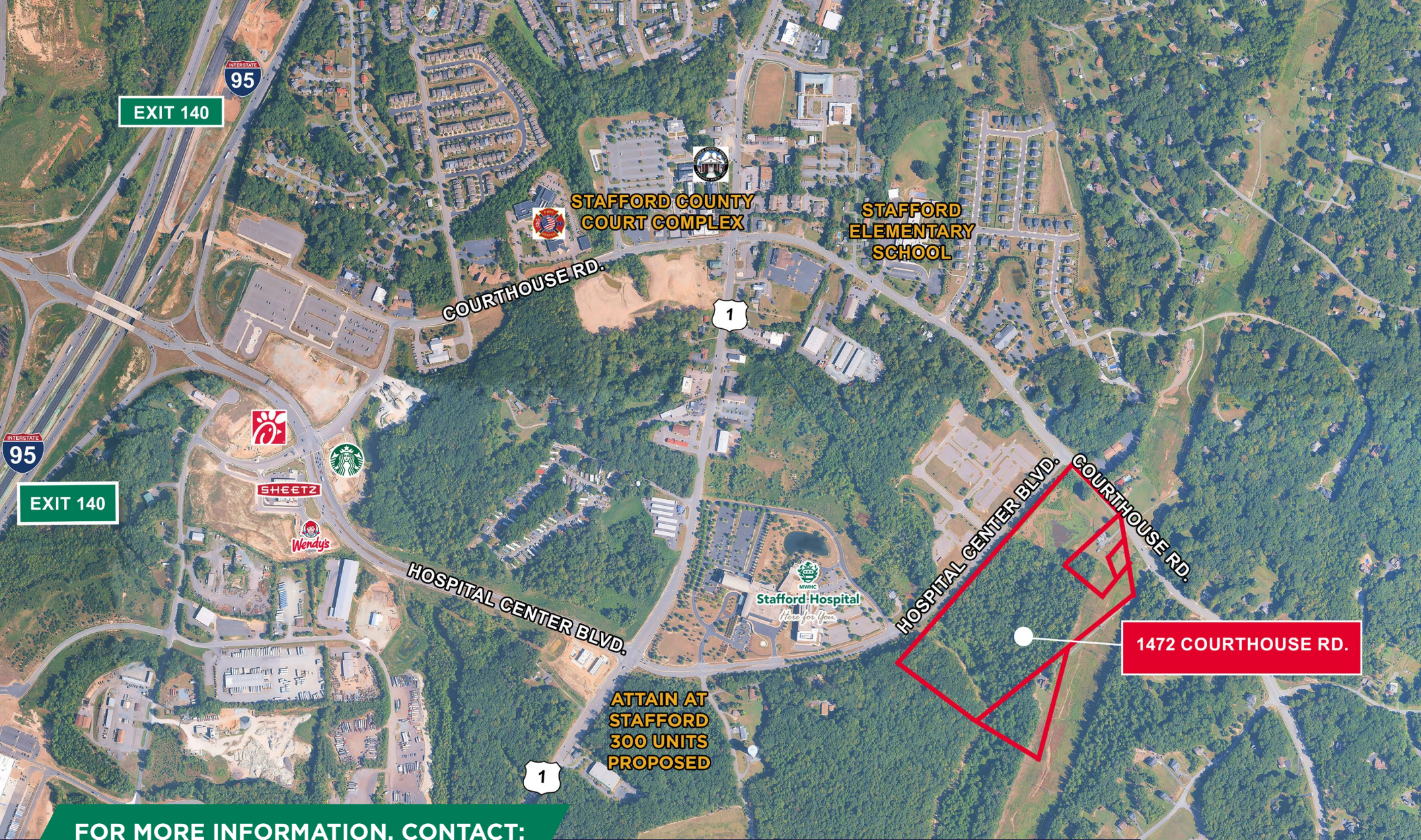


### DEMOGRAPHICS

	1 MILE	3 MILES	5 MILES
POPULATION	3,151	32,742	78,056
HOUSEHOLDS	1,046	10,047	24,501
AVG. HH INCOME	\$108,549	\$147,668	\$142,463
DAYTIME POPULATION	8,242	27,603	65,173







## FOR MORE INFORMATION, CONTACT:

### JAMIE SCULLY, CCIM

Senior Vice President  
540 322 4140

[jamie.scully@thalhimer.com](mailto:jamie.scully@thalhimer.com)

### WILSON GREENLAW, CCIM, SIOR

First Vice President  
540 322 4156

[wilson.greenlaw@thalhimer.com](mailto:wilson.greenlaw@thalhimer.com)

### Eagle Village

1125 Emancipation Hwy.  
Suite 350

Fredericksburg, VA 22401  
[thalhimer.com](http://thalhimer.com)

**STAFFORD  
MIDDLE SCHOOL**

Independently Owned and Operated / A Member of the Cushman & Wakefield Alliance

Cushman & Wakefield | Thalhimer © 2025. No warranty or representation, express or implied, is made to the accuracy or completeness of the information contained herein, and same is submitted subject to errors, omissions, change of price, rental or other conditions, withdrawal without notice, and to any special listing conditions imposed by the property owner(s). As applicable, we make no representation as to the condition of the property (or properties) in question.



**CUSHMAN &  
WAKEFIELD**

**THALHIMER**