

# OFFICE SUITES

For Lease

200 Highland Avenue,  
Needham, MA



## OFFICE SUITES FOR LEASE

### AVAILABLE (APPROX SF):

4 separate office suites:

- Suite 303: 1,098 sf
- Suite 202: 2,100 sf
- Suite 201: 2,250 sf
- Suite 306: 2,724 sf

### USES:

Professional Office Use

### FOR LEASE:

Asking: \$25/sf + electric

**NEARBY TENANTS:** Panera Bread, Staples, petco, Speedway, Advance Auto Parts, Sheraton Boston Needham Hotel, Mandarin Cuisine, and much more.

**LOCATION:** 200 Highland Avenue is conveniently located off Route 95/128.

**SUMMARY:** Fantastic 3-story office building with elevator access in Needham. Features garage parking, as well as outside parking spaces. Ideal space for attorney office, accountant, or other professional office use. Super convenient location off 95/128.

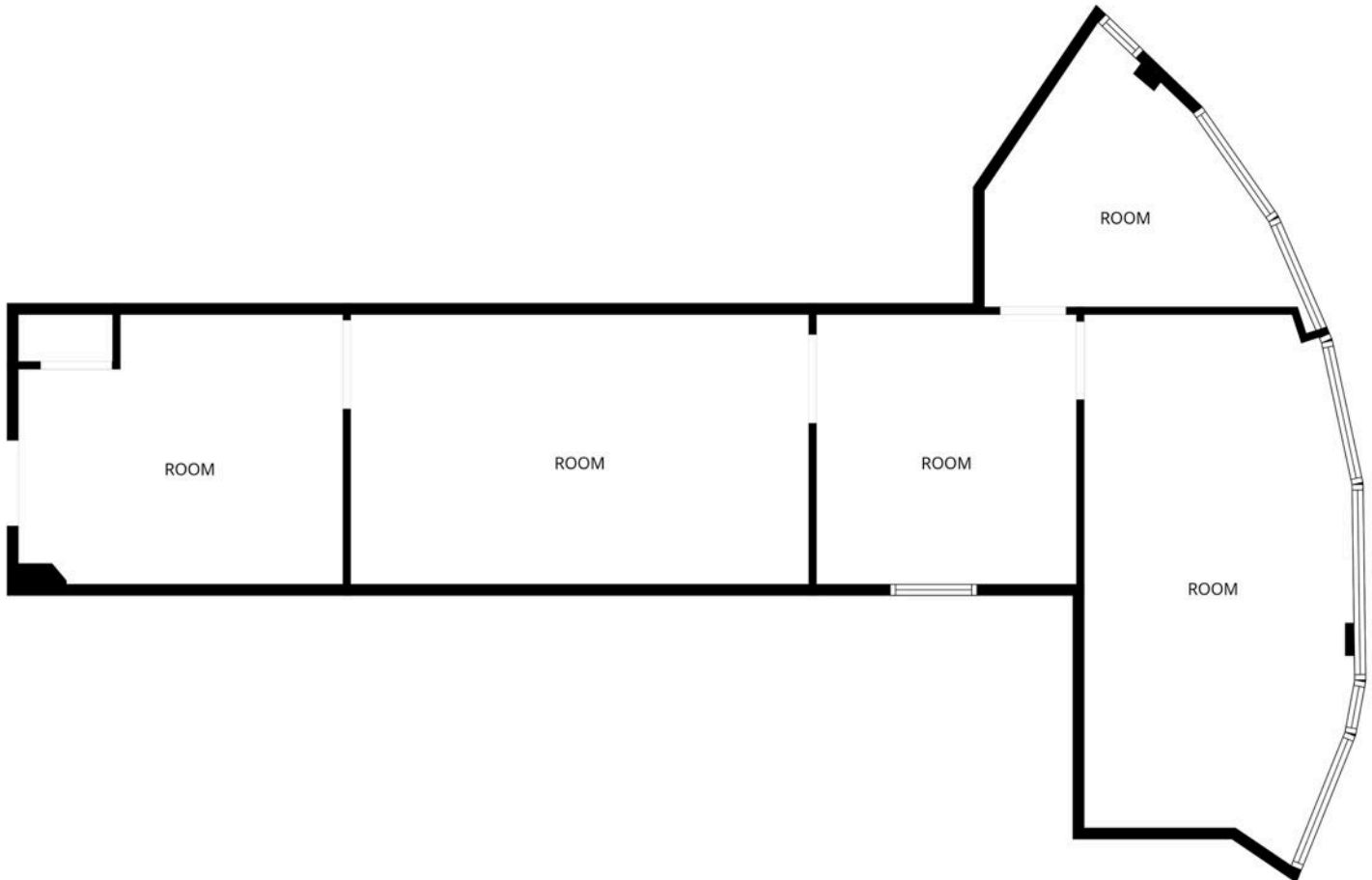
The information contained herein has been obtained through sources deemed reliable by JMJ Commercial Realty, Inc., but cannot be guaranteed for its accuracy. We recommend to the tenant that any information, which is of special interest, should be obtained through independent verification.



**JMJ Commercial Realty**  
935 Great Plain Avenue #261  
Needham, MA 02492  
[www.jmj-cre.com](http://www.jmj-cre.com)

**Josh Seadia**  
Principal  
617-605-5674  
[josh@jmj-cre.com](mailto:josh@jmj-cre.com)

## SUITE 303 - FLOOR PLAN - APPROX 1,098 SF



FLOOR PLAN CREATED BY CUBICASA APP. MEASUREMENTS DEEMED HIGHLY RELIABLE BUT NOT GUARANTEED.

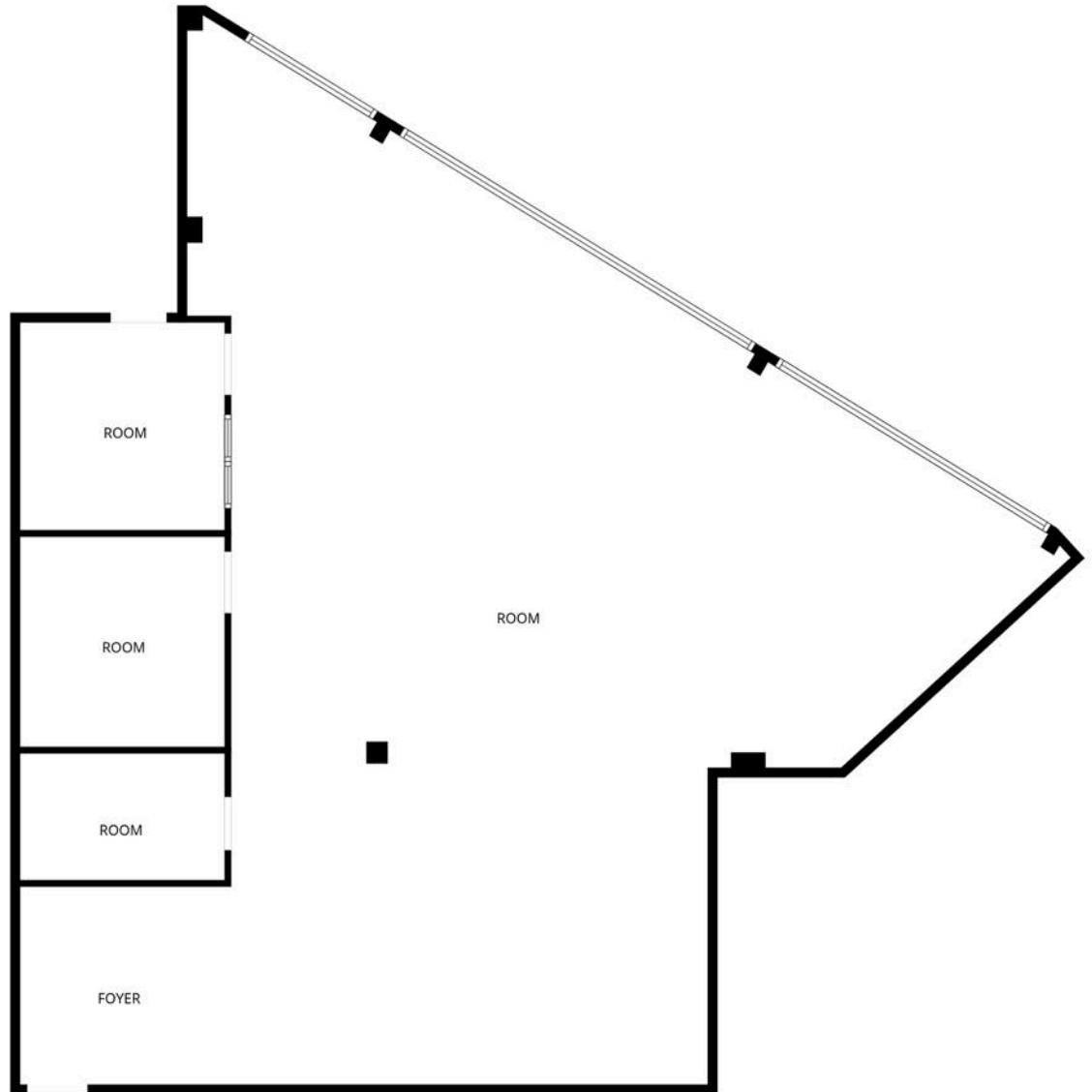
The information contained herein has been obtained through sources deemed reliable by JMJ Commercial Realty, Inc., but cannot be guaranteed for its accuracy. We recommend to the tenant that any information, which is of special interest, should be obtained through independent verification.



**JMJ Commercial Realty**  
935 Great Plain Avenue #261  
Needham, MA 02492  
[www.jmj-cre.com](http://www.jmj-cre.com)

**Josh Seadia**  
Principal  
617-605-5674  
[josh@jmj-cre.com](mailto:josh@jmj-cre.com)

## SUITE 202 - FLOOR PLAN - APPROX 2,100 SF



FLOOR PLAN CREATED BY CUBICASA APP. MEASUREMENTS DEEMED HIGHLY RELIABLE BUT NOT GUARANTEED.

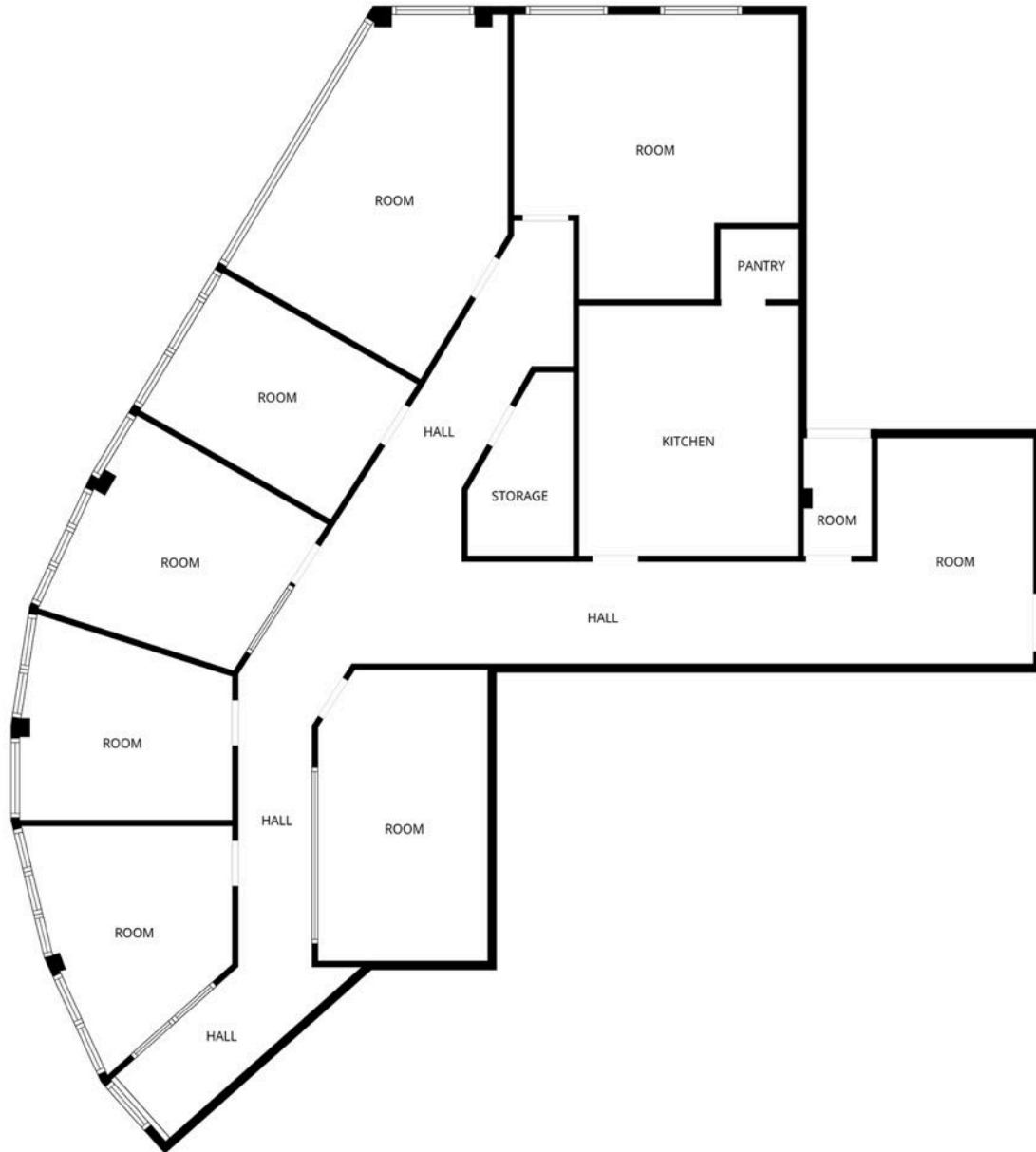
The information contained herein has been obtained through sources deemed reliable by JMJ Commercial Realty, Inc., but cannot be guaranteed for its accuracy. We recommend to the tenant that any information, which is of special interest, should be obtained through independent verification.



**JMJ Commercial Realty**  
935 Great Plain Avenue #261  
Needham, MA 02492  
[www.jmj-cre.com](http://www.jmj-cre.com)

**Josh Seadia**  
Principal  
617-605-5674  
[josh@jmj-cre.com](mailto:josh@jmj-cre.com)

## SUITE 201 - FLOOR PLAN - APPROX 2,250 SF



FLOOR PLAN CREATED BY CUBICASA APP. MEASUREMENTS DEEMED HIGHLY RELIABLE BUT NOT GUARANTEED.

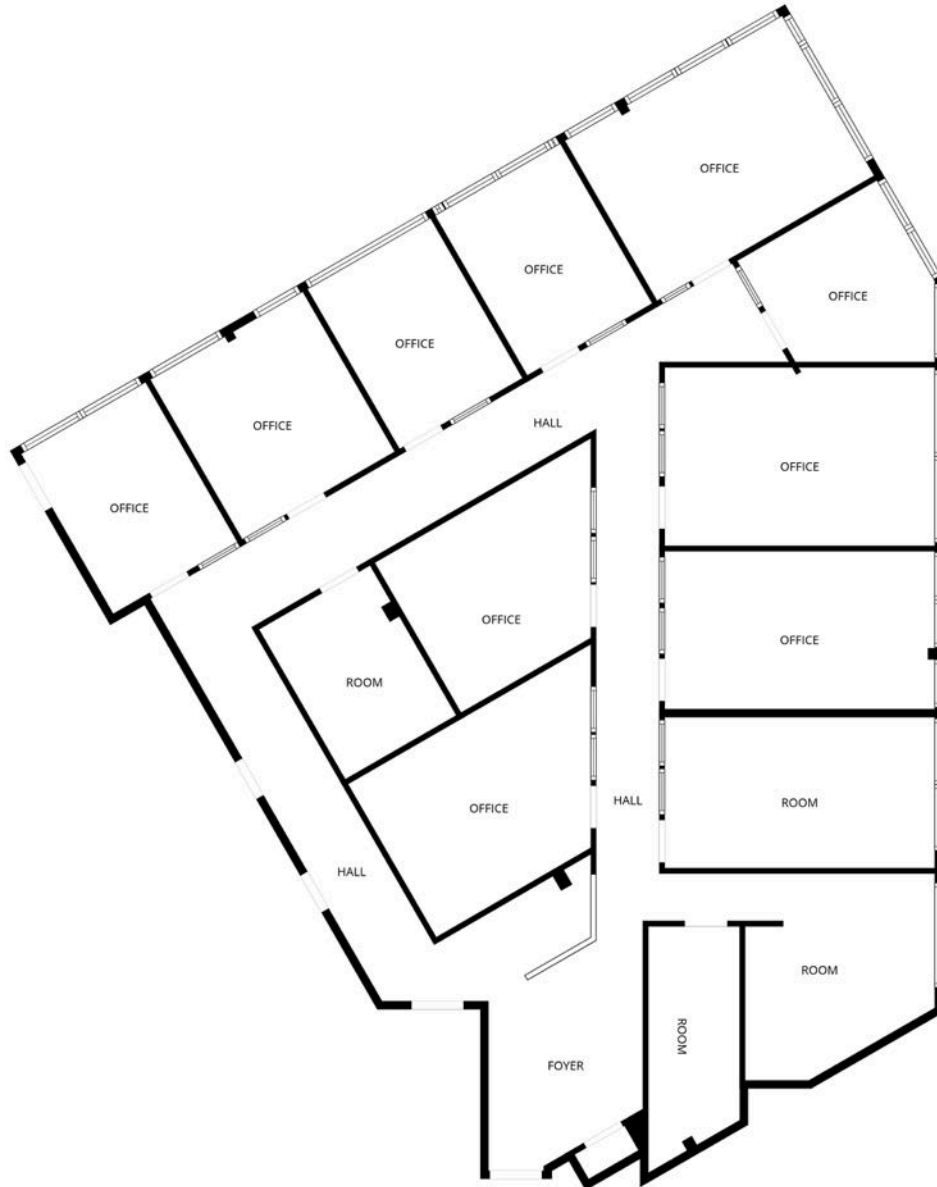
accuracy. We recommend to the tenant that any information, which is of special interest, should be obtained through independent verification.



**JMJ Commercial Realty**  
935 Great Plain Avenue #261  
Needham, MA 02492  
[www.jmj-cre.com](http://www.jmj-cre.com)

**Josh Seadia**  
Principal  
617-605-5674  
[josh@jmj-cre.com](mailto:josh@jmj-cre.com)

## SUITE 306 - FLOOR PLAN - APPROX 2,724 SF



FLOOR PLAN CREATED BY CUBICASA APP. MEASUREMENTS DEEMED HIGHLY RELIABLE BUT NOT GUARANTEED.

The information contained herein has been obtained through sources deemed reliable by JMJ Commercial Realty, Inc., but cannot be guaranteed for its accuracy. We recommend to the tenant that any information, which is of special interest, should be obtained through independent verification.



**JMJ Commercial Realty**  
935 Great Plain Avenue #261  
Needham, MA 02492  
[www.jmj-cre.com](http://www.jmj-cre.com)

**Josh Seadia**  
Principal  
617-605-5674  
[josh@jmj-cre.com](mailto:josh@jmj-cre.com)