

250 ASSAY STREET

86,523 SF CLASS A OFFICE BUILDING at REDEMPTION SQUARE

RedemptionSquare.com

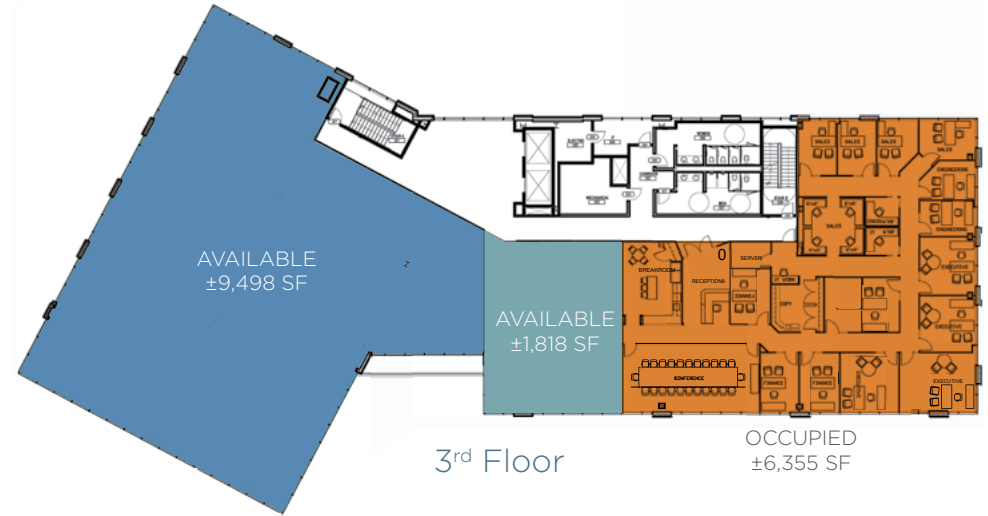


REDEMPTION SQUARE

Redemption Square is Lake Houston's premier mixed-use lifestyle destination designed to help businesses attract the best talent. Your new Class A office at Redemption Square offers a modern and attractive work place surrounded by restaurants, shops, services, entertainment, hotels, and luxury apartments all within walking distance.



250 ASSAY STREET | ±11,300 SF AVAILABLE



PROPERTY OVERVIEW

250 Assay Street is located in Redemption Square, Generation Park's vibrant mixed-use lifestyle center. And 250 Assay Street, our signature, 86,523-square-foot, Class A office building is its crown jewel. This multi-purpose class A office building features retail space on the ground floor and premiere access to a wide range of amenities including restaurants, hotels, nightlife, shops and practical services. Tenants also enjoy covered parking in the five-floor parking garage connected to the building by a covered walkway.

PROPERTY FEATURES

- Expansive lobby with beautiful polished Venetian Terrazzo flooring
- Complimentary garage parking with covered walkway to offices
- Two high-speed elevators
- Floor and suite level access control
- Live video surveillance throughout building and parking garage
- Ground floor restaurants and retail
- New 251-unit luxury apartment building
- New Courtyard Marriott on-site
- Walking distance to Redemption Square's fitness and child care centers.
- Grand staircase off the lobby
- Multiple gigabit+ fiber internet providers

LEASING

RedemptionSquare.com

John Flournoy

o: 713.860.3018

c: 713.299.0922

jflournoy@mccord.com

Ian Adler

o: 713.860.3038

c: 832.661.1848

iadler@mccord.com