



Sound Landing

4117 S Meridian St, Puyallup, WA 98373

Kurtis Pederson
Pederson Developments
Puyallup, WA, 98375
kurtis.pederson18@gmail.com



Sound Landing

\$18.26 /SF/YR

- Convenient location off of Meridian E
- Walking distance to South Hill Mall
- Ample private parking spaces

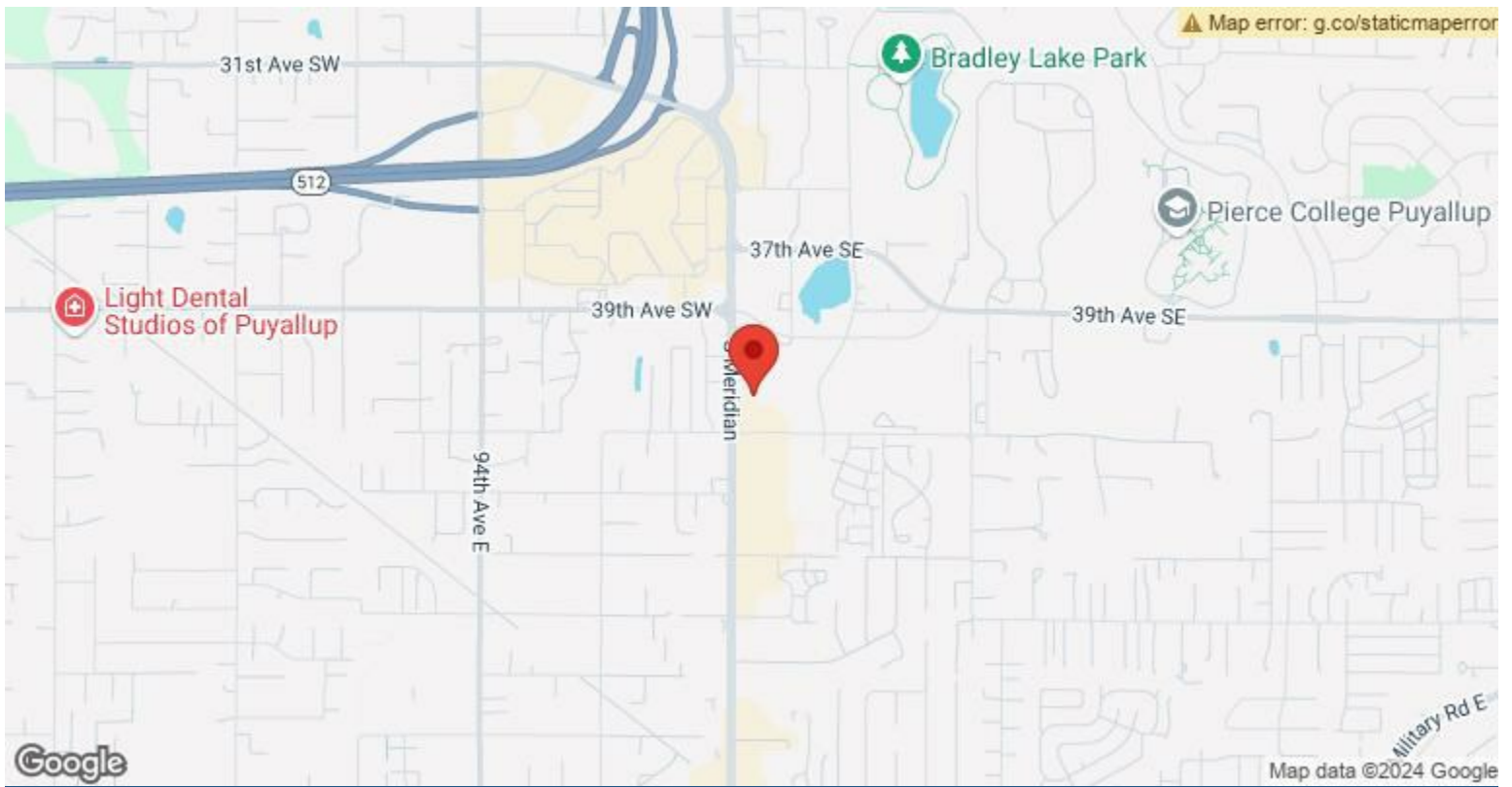


Rental Rate:	\$18.26 /SF/YR
Property Type:	Office
Building Class:	C
Rentable Building Area:	2,300 SF
Year Built:	1996
Walk Score ®:	73 (Very Walkable)
Rental Rate Mo:	\$1.52 /SF/MO

1st Floor

Space Available	2,300 SF
Rental Rate	\$18.26 /SF/YR
Date Available	Now
Service Type	Plus All Utilities
Space Type	Commercial
Space Use	Office
Lease Term	3 - 10 Years

Space for lease in South Hill! We are renting out our upper unit in our Sound Landing building. The unit is approximately 2300 sq ft and consists of both open area and offices. This spacious office is conveniently located off Meridian in South Hill near South Hill Mall, Costco, restaurants and other businesses as well as one minute away from Highway 512. In total the floor plan offers capabilities for: •5 private offices •Reception area •Waiting room •Meeting room or additional office Features include: •Abundant private parking by the building •Two entrances •Kitchen that includes a fridge/freezer, cabinets, microwave and sink •Two private bathrooms •Central Air with heating and cooling •Area to display business signage Lease rate does not include electrical, water or sewage.



4117 S Meridian St, Puyallup, WA 98373

Property Photos



Private Office 2



Private Office 2

Property Photos



Private Office 3



Private Office 4

Property Photos



Kitchen



Private Office 5

Property Photos



Lobby Area



Lobby/Reception Area

Property Photos



Kitchen

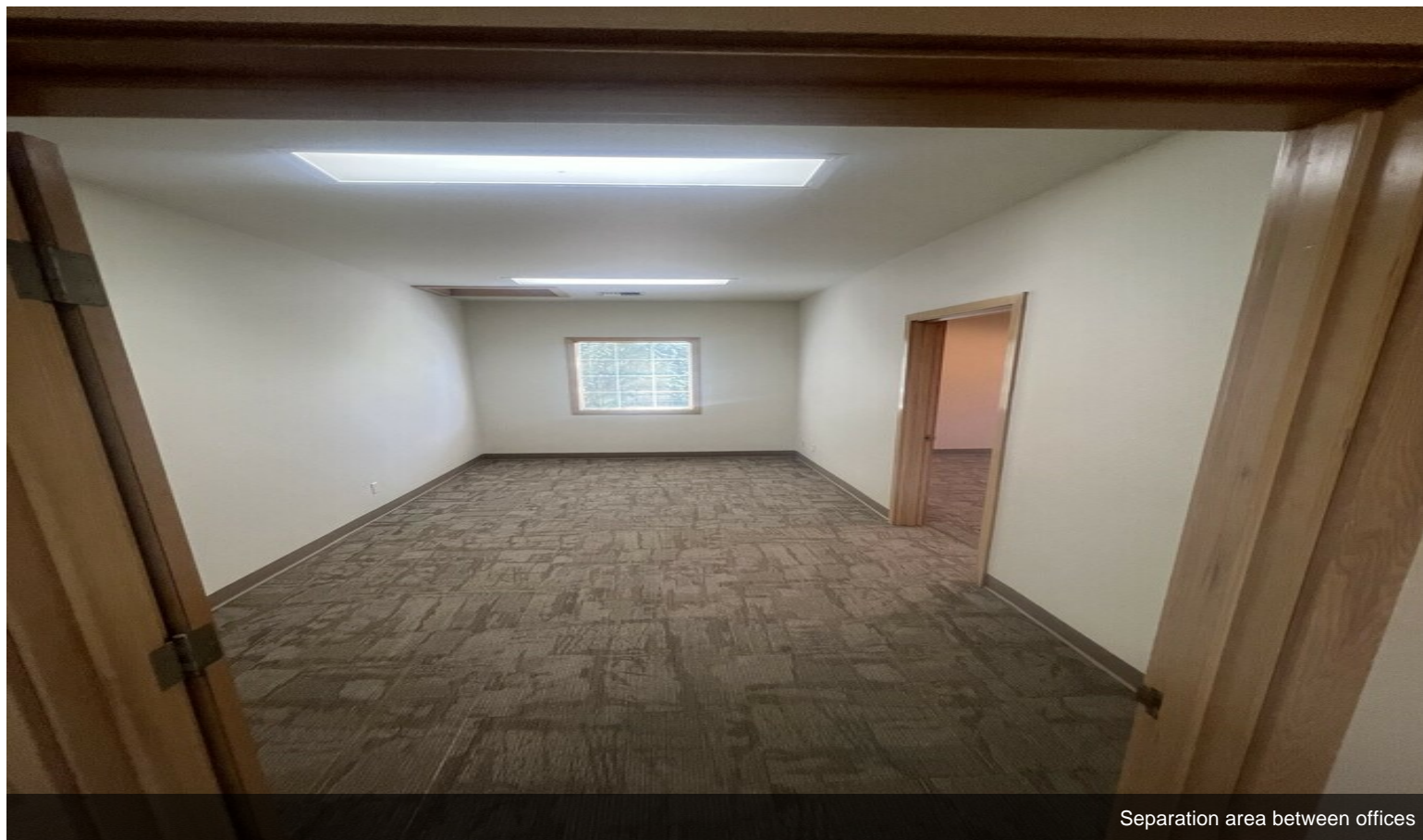


Private Bathroom 1

Property Photos



Private Bathroom 2



Separation area between offices

Property Photos



Entry Way



Building Photo

Property Photos



Building Photo