



Hudson Plaza

7828 Hudson Rd, Woodbury, MN, 55125

Andy Barnes

Managing Broker

www.TwinCitiesRetail.com

Team@NextPhaseCommercial.com

612.386.7249

Property Facts

Established retail location located off of Highway 94 & 694/494.
High traffic counts and strong demographics.

Demographics

Radius	1 MILE	3 MILE	5 MILE
Population	2,734	33,867	103,767
Median HH Income	\$78,115	\$83,707	\$79,123
Average HH Income	\$92,195	\$90,255	\$83,778

Floor 1, Suite 102
2000 - 5000 SF

Features

Building Size: 12,377 SF
Land Size: 1.11 Acres / 48,352 SF
Number of Floors: 1
Year Built: 1985

Area Tenants



Woodbury, MN

Location Facts and Demographics

EPIQUE
REALTY

Location Facts & Demographics

Demographics are determined by a 10 minute drive from 7828 Hudson Rd, Woodbury, MN 55125

CITY, STATE

Woodbury, MN

POPULATION

94,018

AVG. HH SIZE

2.62

MEDIAN HH INCOME

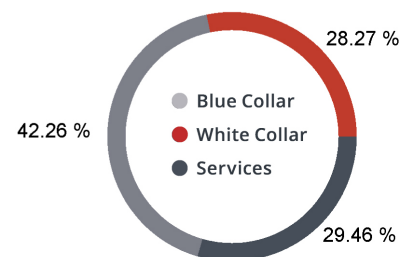
\$78,361

HOME OWNERSHIP

Renters: **7,879**

Owners: **27,418**

EMPLOYMENT



53.22 %
Employed

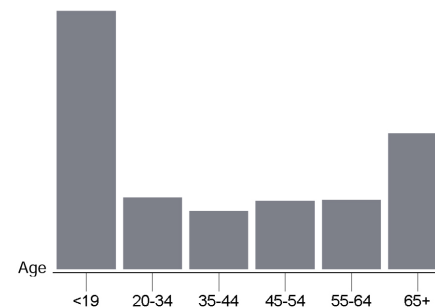
1.40 %
Unemployed

EDUCATION

High School Grad: **21.96 %**
Some College: **24.02 %**
Associates: **8.38 %**
Bachelors: **43.00 %**

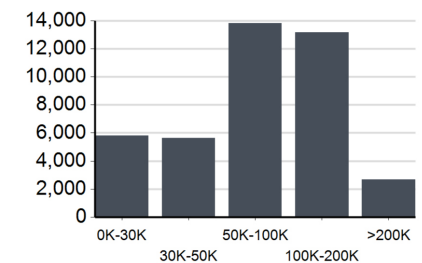
GENDER & AGE

48.61 %   **51.39 %**

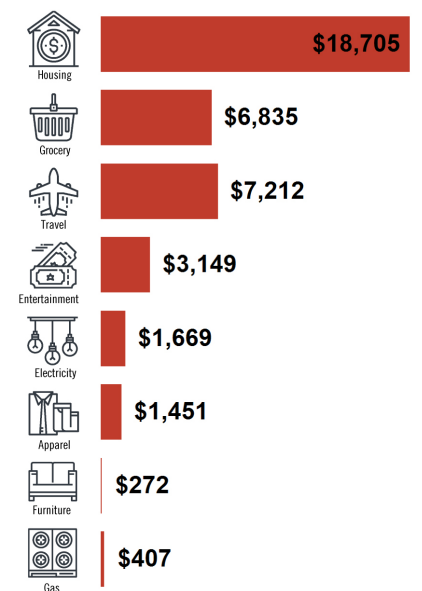


 **Catylist Research**

INCOME BY HOUSEHOLD



HH SPENDING



Photos

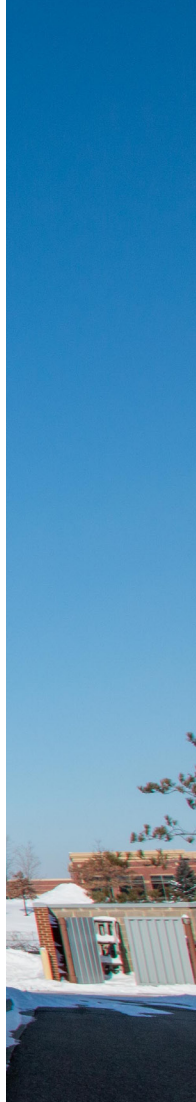
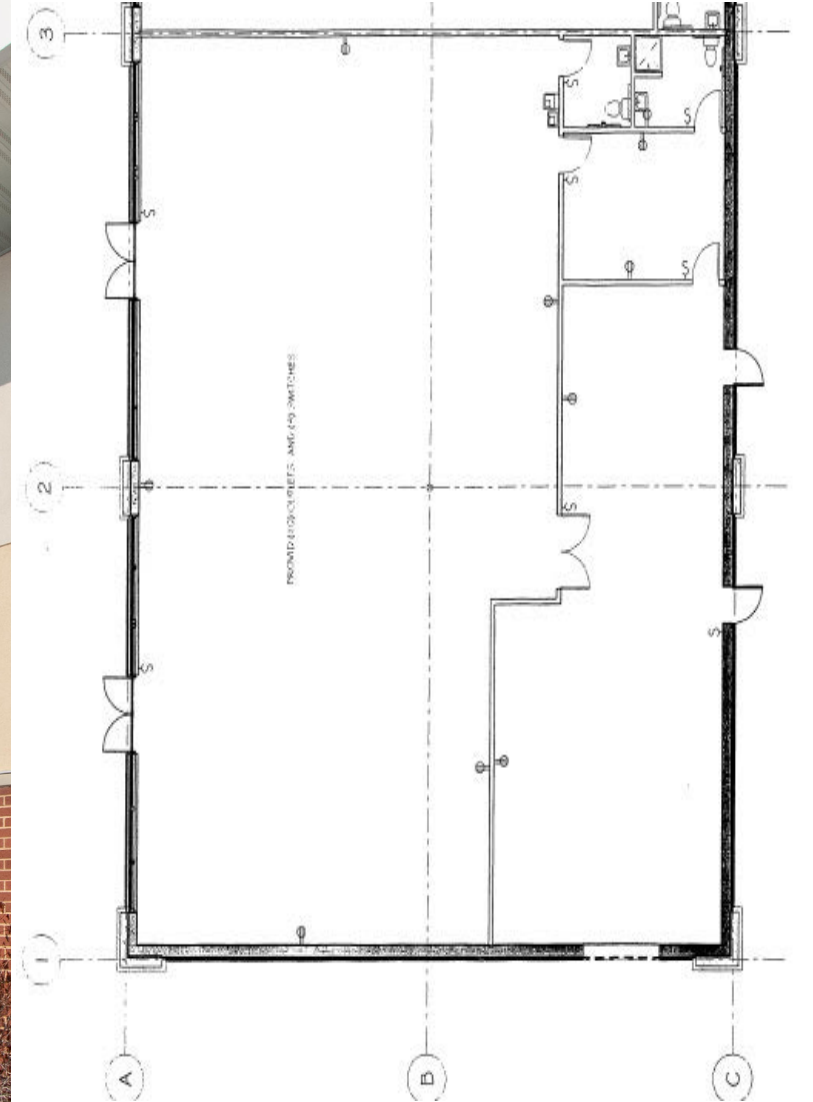
7828 Hudson Rd, Woodbury, MN

EPIQUE
REALTY



Floorplan

Suite 102, 2000 - 5000 sqft



Andy Barnes

Managing Broker

www.TwinCitiesRetail.com

Team@NextPhaseCommercial.com

612.386.7249

EPIQUE
REALTY