

OFFICE SPACE FOR LEASE



# 18 IMPERIAL PLACE-UNIT B501 & B51A

Providence, RI 02903

**WHITNEY RUGG**

Sales Associate  
401.751.3200 x3302  
whitney@mgcommercial.com

**LEEDS MITCHELL IV, SIOR**

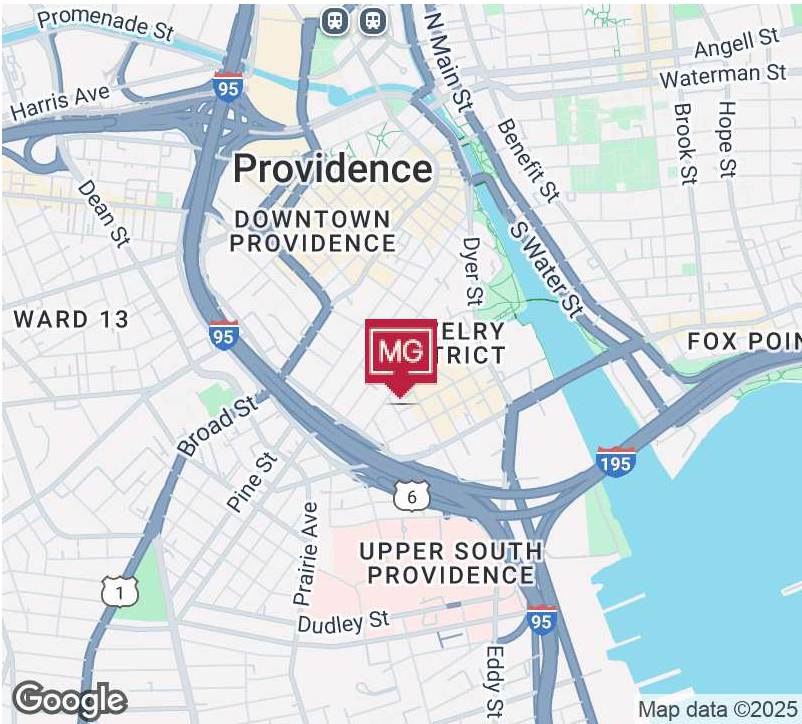
Principal Broker, Partner  
401.751.3200 x3307  
leeds@mgcommercial.com

**MG COMMERCIAL**

365 Eddy Street, Penthouse Suite  
Providence, RI 02903  
401.751.3200 | mgcommercial.com



# PROPERTY SUMMARY



## PROPERTY DESCRIPTION

MG Commercial is pleased to bring to market this completely renovated 1st-floor office suite in this well-established mixed-use building. The Courtyard suite is 3,244 SF and offers large windows overlooking the tranquil courtyard of the Imperial Knife complex. This suite has large open work areas, high ceilings, private office space, and a custom kitchen/breakroom area.

## PROPERTY HIGHLIGHTS

- Completely renovated office suite, move-in ready
- Dedicated parking at no additional charge
- Functional floor plan
- Outdoor courtyard

## LOCATION DESCRIPTION

18 Imperial Place is well located in the Jewelry District of Providence. This location offers immediate access to Routes 95 & 195 and is walking distance to many restaurants and cafés in the area. Downtown Providence is also a short 10-minute walk away.

## OFFERING SUMMARY

Lease Rate:	\$22.50 SF/yr (MG)
Available SF:	3,244 SF
Building Size:	77,952 SF

SPACES	LEASE RATE	SPACE SIZE
Unit B501 & B51A	\$22.50 SF/yr	3,244 SF

WHITNEY RUGG  
Sales Associate  
401.751.3200 x3302  
whitney@mgcommercial.com

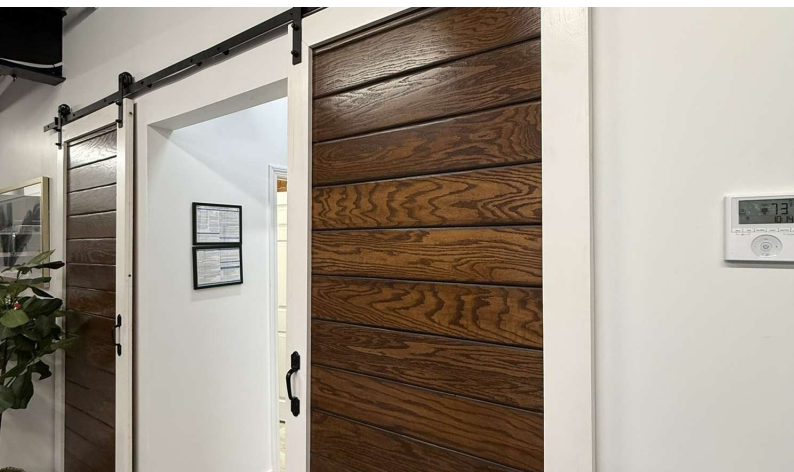
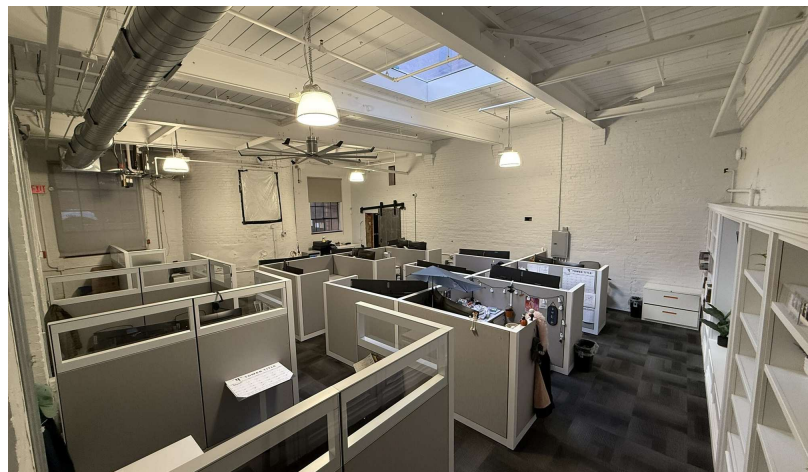
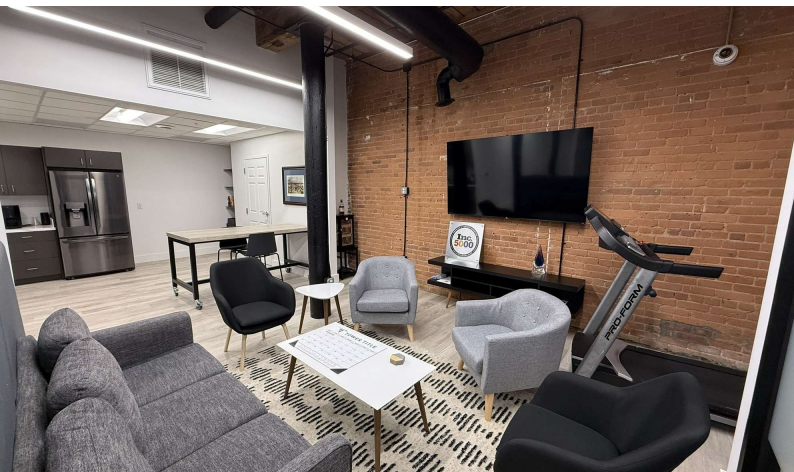
LEEDS MITCHELL IV, SIOR  
Principal Broker, Partner  
401.751.3200 x3307  
leeds@mgcommercial.com

365 Eddy Street, Penthouse Suite  
Providence, RI 02903  
mgcommercial.com





# ADDITIONAL PHOTOS



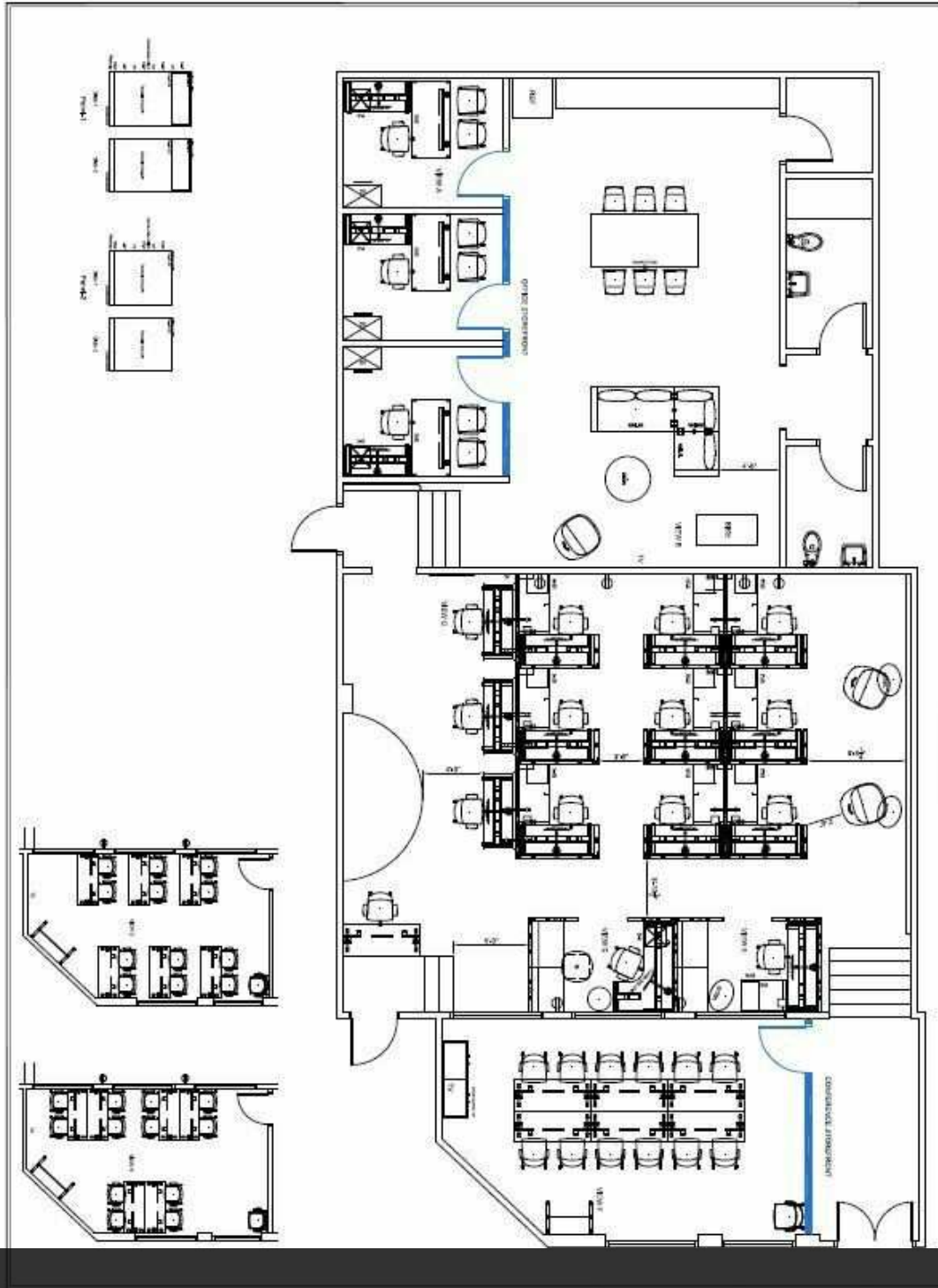
**WHITNEY RUGG**  
Sales Associate  
401.751.3200 x3302  
whitney@mgcommercial.com

**LEEDS MITCHELL IV, SIOR**  
Principal Broker, Partner  
401.751.3200 x3307  
leeds@mgcommercial.com

365 Eddy Street, Penthouse Suite  
Providence, RI 02903  
mgcommercial.com



# ADDITIONAL PHOTOS



B501 &amp; B51A

**WHITNEY RUGG**  
Sales Associate  
401.751.3200 x3302  
whitney@mgcommercial.com

**LEEDS MITCHELL IV, SIOR**  
Principal Broker, Partner  
401.751.3200 x3307  
leeds@mgcommercial.com

365 Eddy Street, Penthouse Suite  
Providence, RI 02903  
mgcommercial.com

