

SPRING BROOK CROSSING - LOT 8

PROVIDENCE & SOUTHAMPTON, LOT 8,
65203, MO COLUMBIA

SPRING BROOK
crossing

MEL ZELENAK

GINA RENDE

MEL@MALYREALTY.COM

GINA@MALYREALTY.COM

O: 573.443.3200

O: 573.443.3200

C: 573.999.3131

C: 314.477.4462



OFFERING SUMMARY

Sale Price:	Call For Pricing
Lot Size:	1..19 Acres
Delivery:	Shovel Ready
Zoning:	M-C

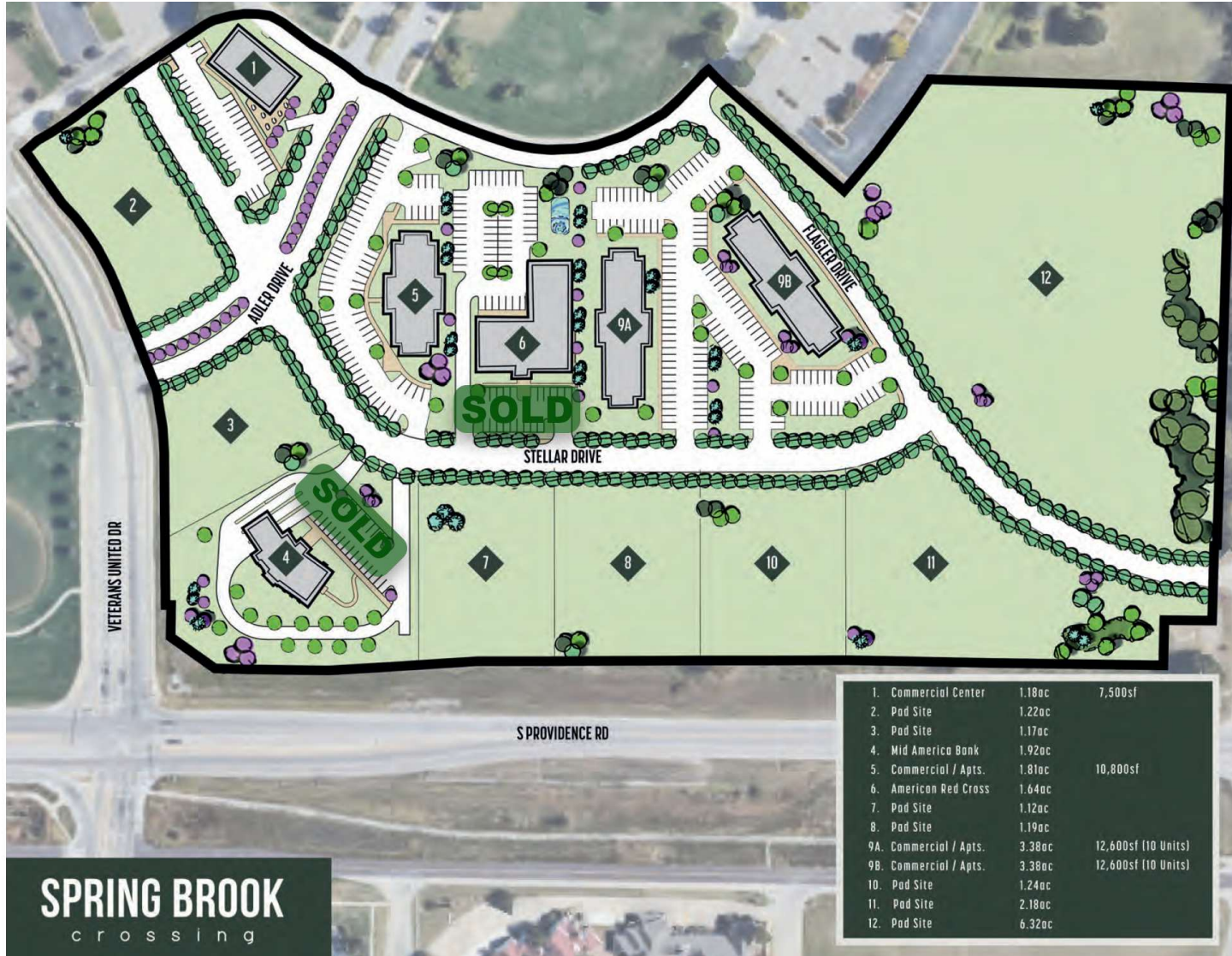
PROPERTY OVERVIEW

Multiple pad sites available in highly desirable South Columbia. These sites sit at the signalized intersection of Providence & Veterans United Drive. Sites are delivered with M-C zoning, are platted, rough graded, have internal roadways complete, and have all utilities at or near site.

PROPERTY HIGHLIGHTS

- Highly desirable South Columbia location
- Signalized Intersection of Providence & Southhampton
- Adjacent to corporate headquarters of Veterans United Home Loans and cattycorner to the University of Missouri Healthcare South Campus and Rock Bridge Highschool
- Average Daily Traffic: 30,618

MEL ZELENAK GINA RENDE
 MEL@MALYREALTY.COM GINA@MALYREALTY.COM
 O: 573.443.3200 O: 573.443.3200
 C: 573.999.3131 C: 314.477.4462



MEL ZELENAK

MEL@MALYREALTY.COM
O: 573.443.3200
C: 573.999.3131

GINA RENDE

GINA@MALYREALTY.COM
O: 573.443.3200
C: 314.477.4462



MEL ZELENAK

MEL@MALYREALTY.COM
 O: 573.443.3200
 C: 573.999.3131

GINA RENDE

GINA@MALYREALTY.COM
 O: 573.443.3200
 C: 314.477.4462



MEL ZELENAK

GINA RENDE

MEL@MALYREALTY.COM

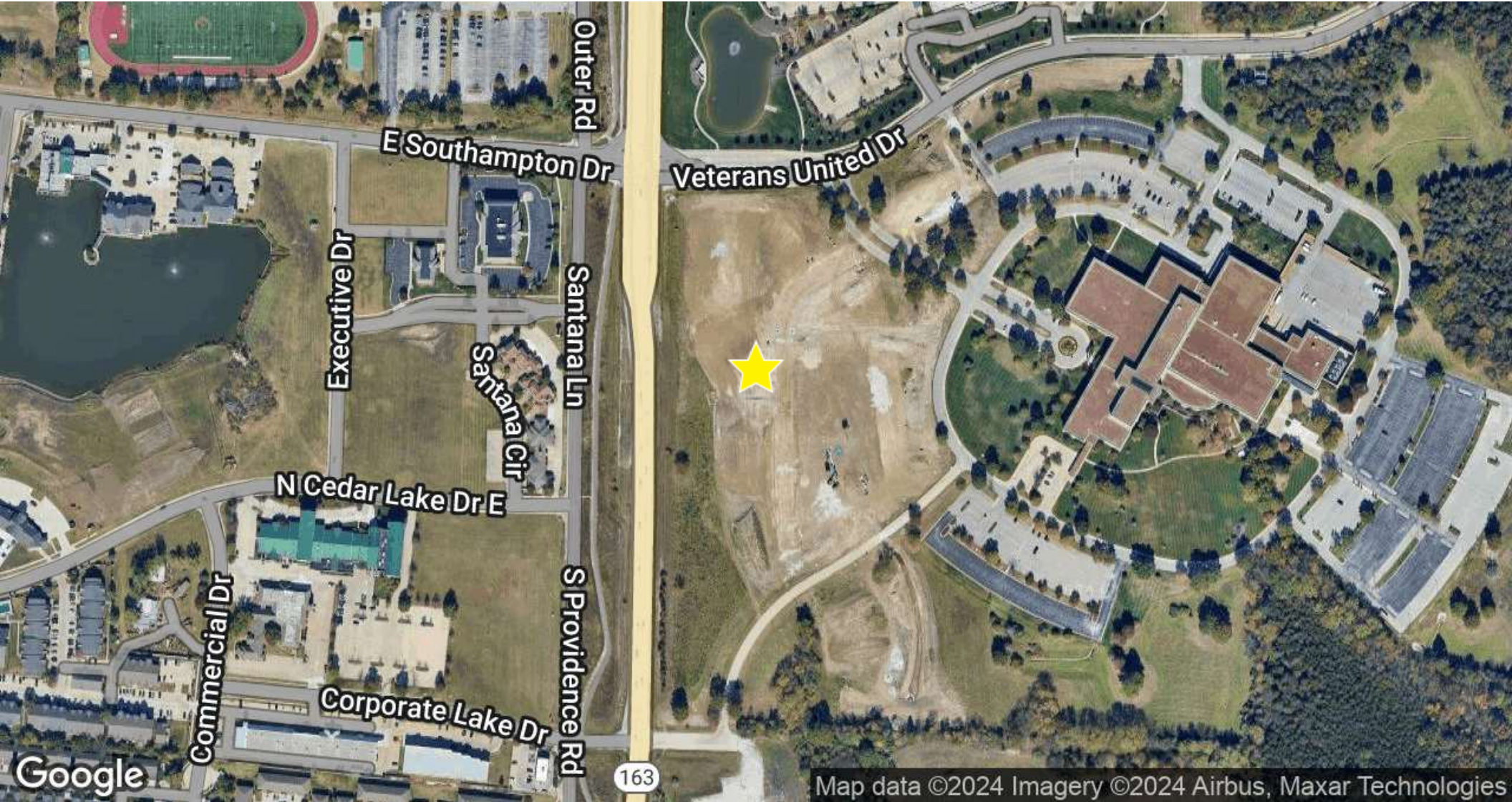
GINA@MALYREALTY.COM

O: 573.443.3200

O: 573.443.3200

C: 573.999.3131

C: 314.477.4462



MEL ZELENAK

MEL@MALYREALTY.COM

O: 573.443.3200

C: 573.999.3131

GINA RENDE

GINA@MALYREALTY.COM

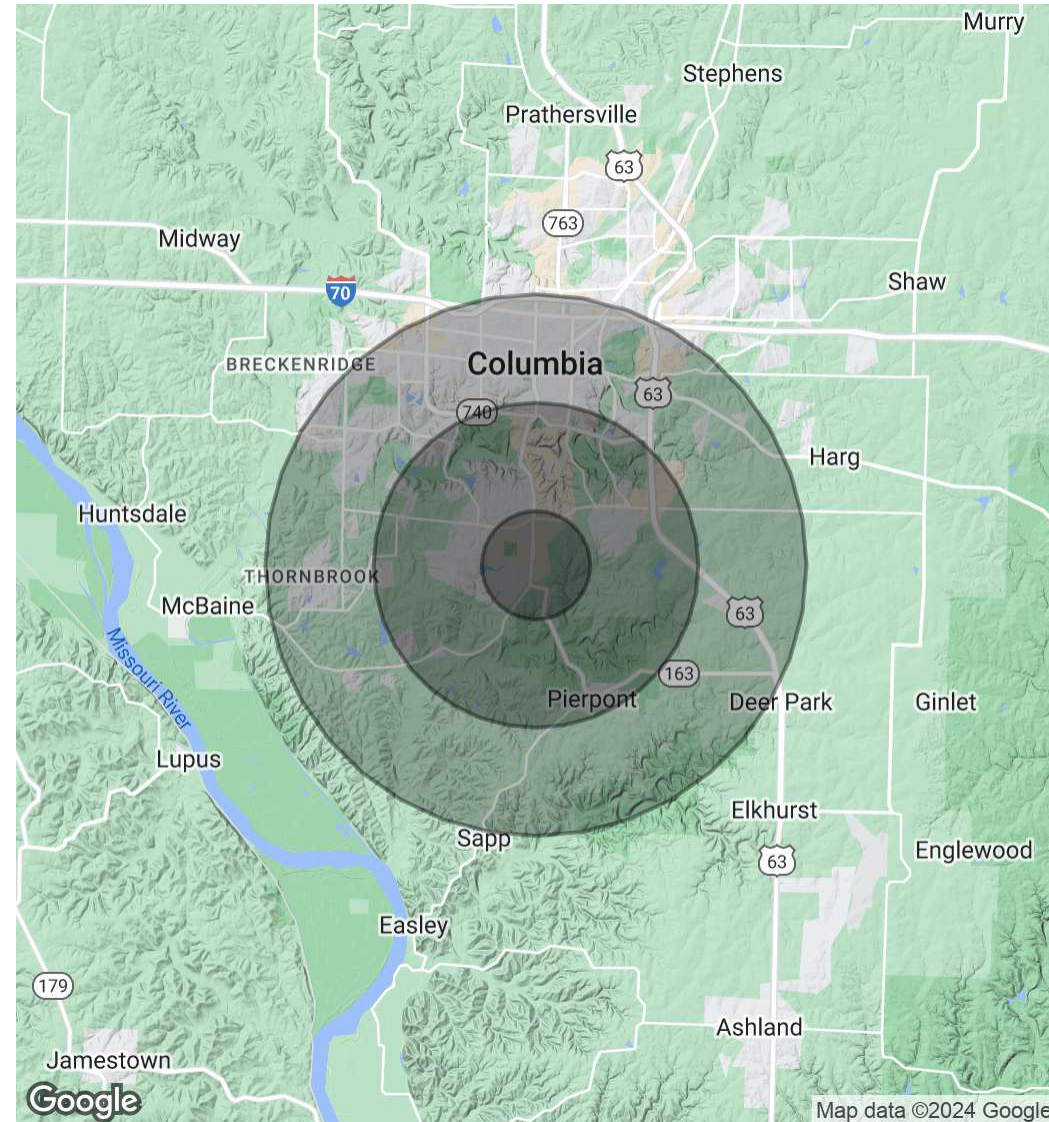
O: 573.443.3200

C: 314.477.4462

POPULATION	1 MILE	3 MILES	5 MILES
Total Population	5,220	39,628	92,332
Average Age	32.3	29.9	32.0
Average Age (Male)	26.5	28.7	31.1
Average Age (Female)	34.5	30.9	32.8

HOUSEHOLDS & INCOME	1 MILE	3 MILES	5 MILES
Total Households	2,527	16,120	40,928
# of Persons per HH	2.1	2.5	2.3
Average HH Income	\$62,329	\$73,256	\$70,057
Average House Value	\$173,651	\$197,575	\$172,673

* Demographic data derived from 2020 ACS - US Census



MEL ZELENAK GINA RENDE
 MEL@MALYREALTY.COM GINA@MALYREALTY.COM
 O: 573.443.3200 O: 573.443.3200
 C: 573.999.3131 C: 314.477.4462