

# Available - Commercial Space

200 Sanford Rd – Pittsboro, NC 27312



**For Lease : 425-2000 Sq.Ft Commercial Space**

## Property Details

**Diagonally Opposite to Court House.**

- **Up to 2,000 Sq Ft Office Space available.**
- **Located in downtown Pittsboro and less than 3 miles from the new Chatham Park project.**
- **Tenant mix includes Chiropractic Office, Counselling Service and Retail tenants like Hair and Tanning Salon, Bakery, etc**
- **Ample parking. Finished space**
- **Starting at \$14psf + \$2psf TiCAM.**



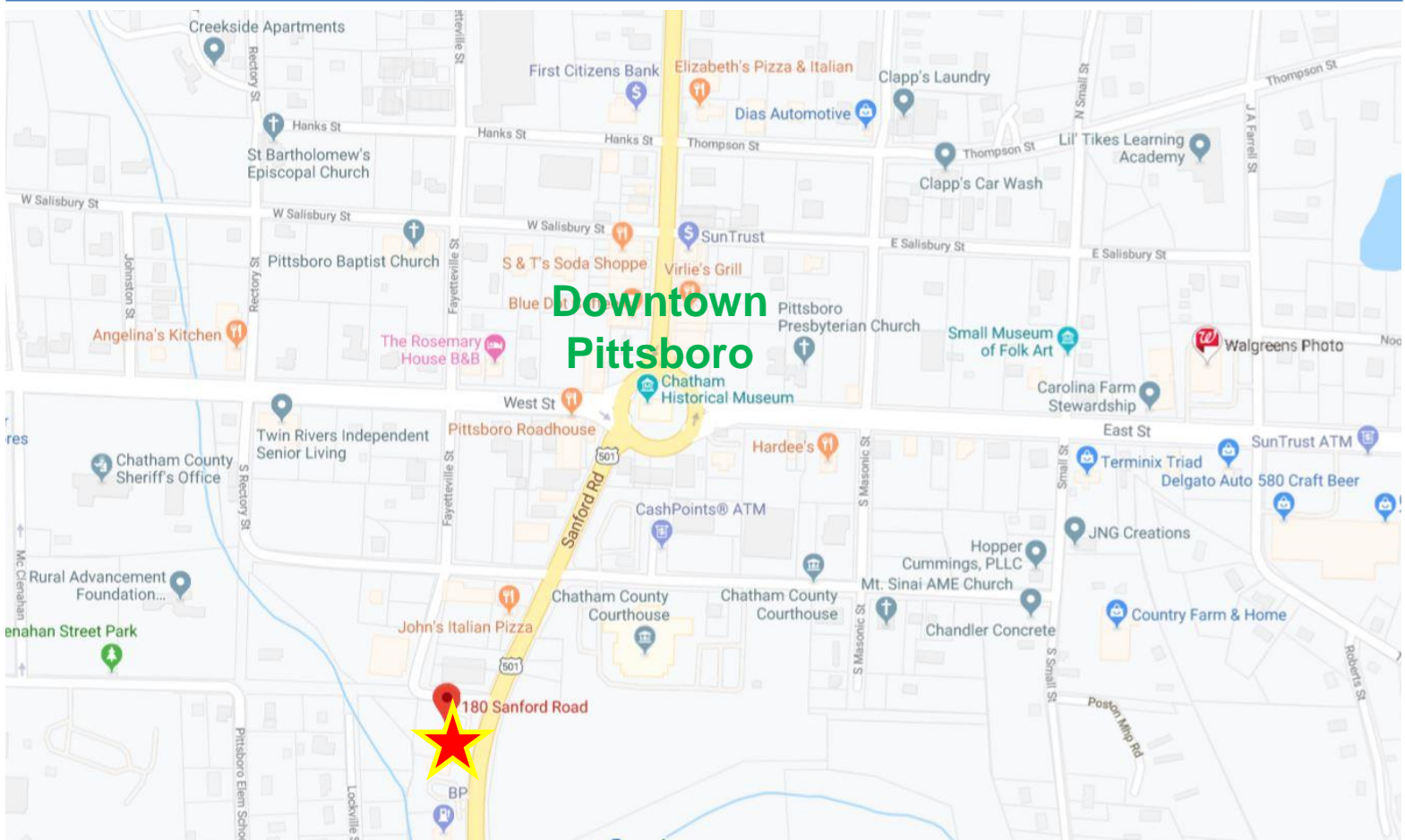
The information contained herein has been obtained from sources deemed reliable, however, no representation or warranty, either expressed or implied, is made as to its completeness or accuracy. Prospects should make their own investigations to ascertain the accuracy of the material contained herein. This offering is subject to change, correction or withdrawal.

**REIT Place Realty**

**[rentals@reitplace.com](mailto:rentals@reitplace.com)**

**(919) 926-9776 x707**

# Location



## Location Details

**The location is in downtown Pittsboro, 2 blocks from the very center. Across from newly established 9/11 memorial. BP C-Store is located on the South side and Pittsboro Fire Station #12 on the North Side on the property. Chatham County courthouse is diagonally across. Excellent location to walk to Courthouse or lunch.**

The information contained herein has been obtained from sources deemed reliable, however, no representation or warranty, either expressed or implied, is made as to its completeness or accuracy. Prospects should make their own investigations to ascertain the accuracy of the material contained herein. This offering is subject to change, correction or withdrawal.

**REIT Place Realty**  
**rentals@reitplace.com (919) 926-9776 x707**



# Site Details



## Building & Site Details

**The Office Building is on Hwy 15/501 (Sanford Rd). Access entrances to the site, directly on Sanford Rd. All suites have their own ADA accessible bathroom and heating/cooling system. Suite consists of 2 rooms, one in front, one in back.**

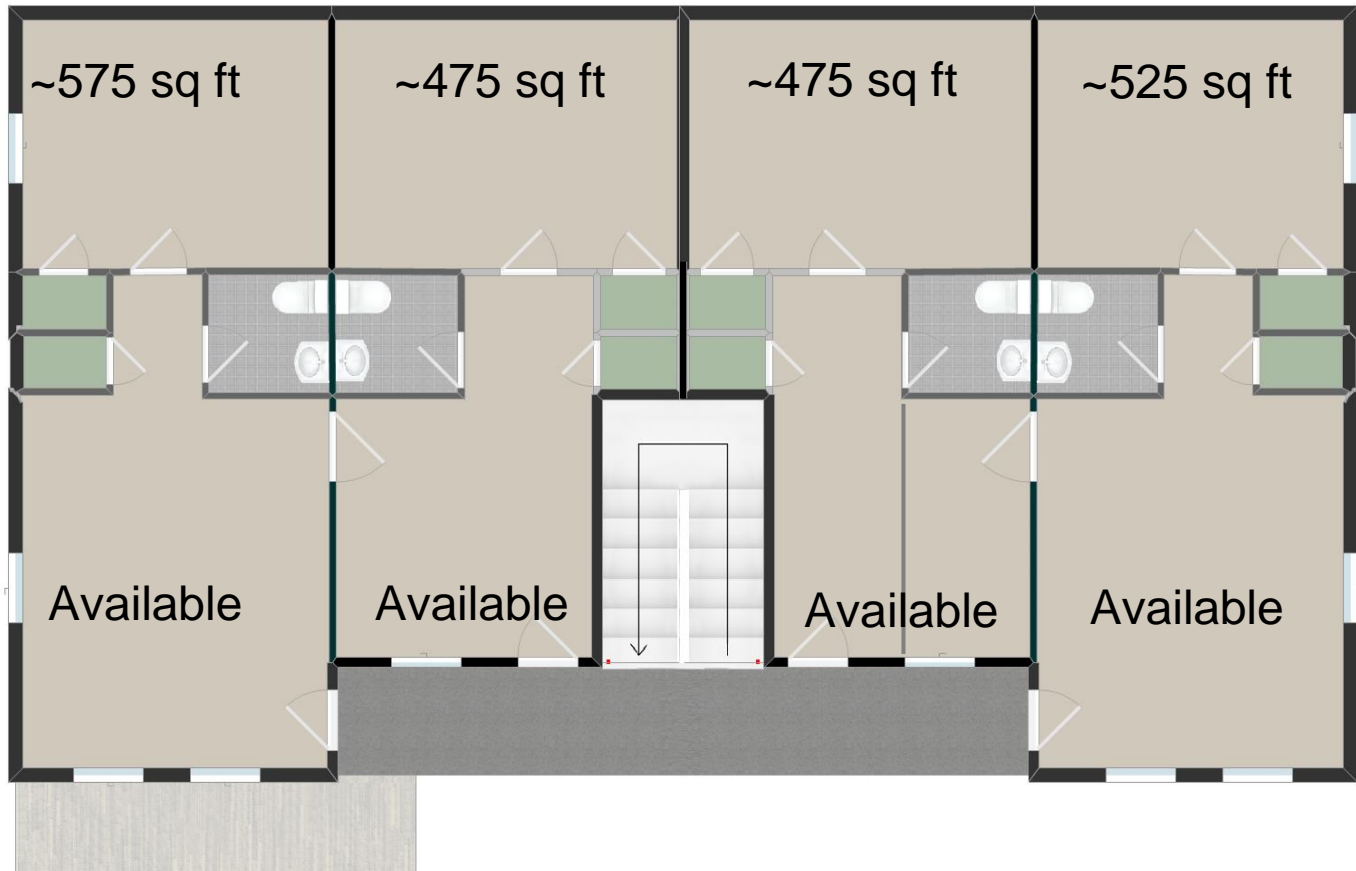
The information contained herein has been obtained from sources deemed reliable, however, no representation or warranty, either expressed or implied, is made as to its completeness or accuracy. Prospects should make their own investigations to ascertain the accuracy of the material contained herein. This offering is subject to change, correction or withdrawal.

**REIT Place Realty**

**[rentals@reitplace.com](mailto:rentals@reitplace.com)**

**(919) 926-9776 x707**

# Floor Plan



## Building & Site Details

**Upto 2,000+ Sq.Ft Office Space on Sanford Rd. Diagonally opposite from Courthouse and 9/11 Memorial. Signage available on building.**

The information contained herein has been obtained from sources deemed reliable, however, no representation or warranty, either expressed or implied, is made as to its completeness or accuracy. Prospects should make their own investigations to ascertain the accuracy of the material contained herein. This offering is subject to change, correction or withdrawal.

**REIT Place Realty**  
**rentals@reitplace.com (919) 926-9776 x707**



# Demographics



	5 mi	10 mi	15 mi
Population	8,624	32,050	115,393
Households	3,719	3,719	43,541
Median Household Income	66,795	69,039	69,810
Median Age	47	46	40

The information contained herein has been obtained from sources deemed reliable, however, no representation or warranty, either expressed or implied, is made as to its completeness or accuracy. Prospects should make their own investigations to ascertain the accuracy of the material contained herein. This offering is subject to change, correction or withdrawal.

# Local

PRESTON DEVELOPMENT COMPANY

HOME ABOUT PRESTON/OUR TEAM PROJECTS NEW

## Chatham Park

CHATHAM PARK  
Many Choices. One Place.

HAW RIVER

Durham

Chapel Hill

32 min.

40

RTP

27 min.

RDU AIRPORT

540

440

34 min.

Raleigh

Cary

Apex

CHATHAM PARK

Pittsboro

Anchor Site

64

540

40

FUTURE 540 EXTENSION TBD

RALEIGH EXECUTIVE AIRPORT

▼ PINEHURST

Live. Work. Play.

Pioneered by Preston Development Company, Chatham Park is a one of kind Planned Technological community sprawling over 7000+ acres of land in Pittsboro offering choices in all aspects of Life. Strategically located near to the Research Triangle Park(RTP) , Raleigh-Durham International Airport(RDU), several world class Universities, it offers a central prime spot for growth for both families and professional careers. Learn more at: [chathampark.com](http://chathampark.com)

The information contained herein has been obtained from sources deemed reliable, however, no representation or warranty, either expressed or implied, is made as to its completeness or accuracy. Prospects should make their own investigations to ascertain the accuracy of the material contained herein. This offering is subject to change, correction or withdrawal.

**REIT Place Realty**  
[rentals@reitplace.com](mailto:rentals@reitplace.com) (919) 926-9776 x707



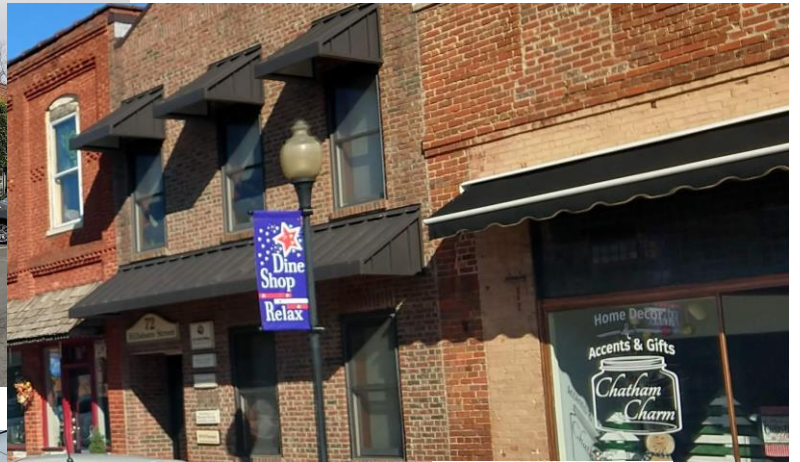
# Local



The information contained herein has been obtained from sources deemed reliable, however, no representation or warranty, either expressed or implied, is made as to its completeness or accuracy. Prospects should make their own investigations to ascertain the accuracy of the material contained herein. This offering is subject to change, correction or withdrawal.



# Local



**Hwy 55**  
BURGERS SHAKES & FRIES



**Greek Kouzina**

**Walgreens**

The information contained herein has been obtained from sources deemed reliable, however, no representation or warranty, either expressed or implied, is made as to its completeness or accuracy. Prospects should make their own investigations to ascertain the accuracy of the material contained herein. This offering is subject to change, correction or withdrawal.

**REIT Place Realty**  
**rentals@reitplace.com (919) 926-9776 x707**



# Local



The information contained herein has been obtained from sources deemed reliable, however, no representation or warranty, either expressed or implied, is made as to its completeness or accuracy. Prospects should make their own investigations to ascertain the accuracy of the material contained herein. This offering is subject to change, correction or withdrawal.