

**FOR SALE**

530 Front Street  
San Diego, CA  
92101



# Storefront Retail Space For Sale

**EMMETT CAHILL**  
619.243.8470  
ecahill@qfcre.com  
BRE #02033604

**PETER WRIGHT**  
619.318.2139  
pwright@qfcre.com  
BRE #01846272

*The information contained here has been obtained from sources considered to be reliable, but no guarantee of its accuracy is made by this company. In addition, no representation is made respecting zoning, condition of title, dimensions or any matters of a legal or environmental nature. Such matters should be referred to legal counsel for determination. Terms and conditions are subject to change without prior notice. Subject to errors and omissions.*



## SPACE AVAILABLE

1,400 SF

## SALE PRICE

\$1,100,000.00

## PROPERTY HIGHLIGHTS

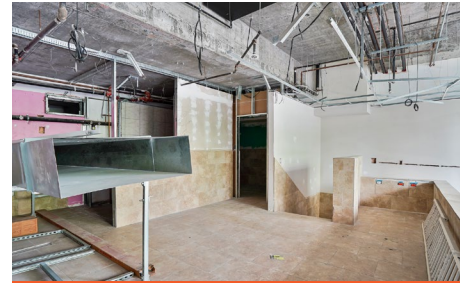
- Street front retail space in Pinnacle Tower
- Built in 2005, 2 parking spaces included
- HOA = \$760 p/month
- Downtown in Marina District
- Heavily populated area



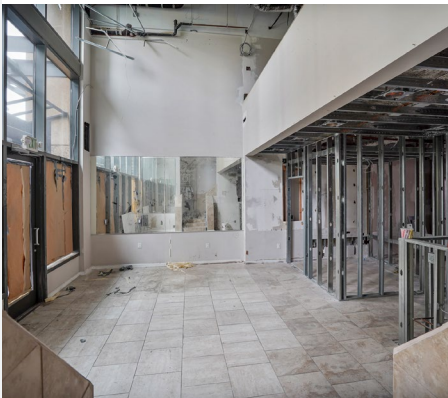
**EMMETT CAHILL**  
619.243.8470  
ecahill@qfcre.com  
BRE #02033604

**PETER WRIGHT**  
619.318.2139  
pwright@qfcre.com  
BRE #01846272

*The information contained here has been obtained from sources considered to be reliable, but no guarantee of its accuracy is made by this company. In addition, no representation is made respecting zoning, condition of title, dimensions or any matters of a legal or environmental nature. Such matters should be referred to legal counsel for determination. Terms and conditions are subject to change without prior notice. Subject to errors and omissions.*



## PHOTOS



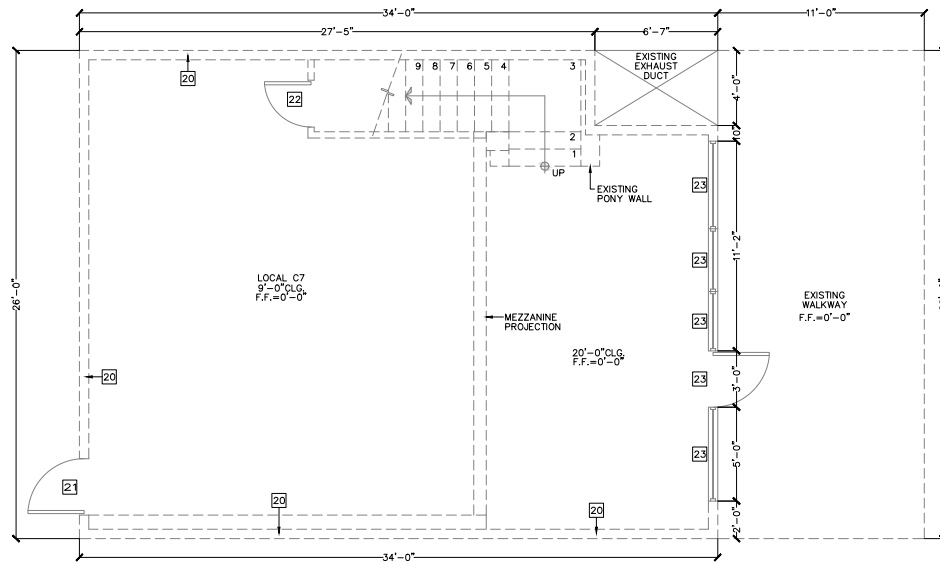
**EMMETT CAHILL**  
619.243.8470  
ecahill@qfcre.com  
BRE #02033604

**PETER WRIGHT**  
619.318.2139  
pwright@qfcre.com  
BRE #01846272

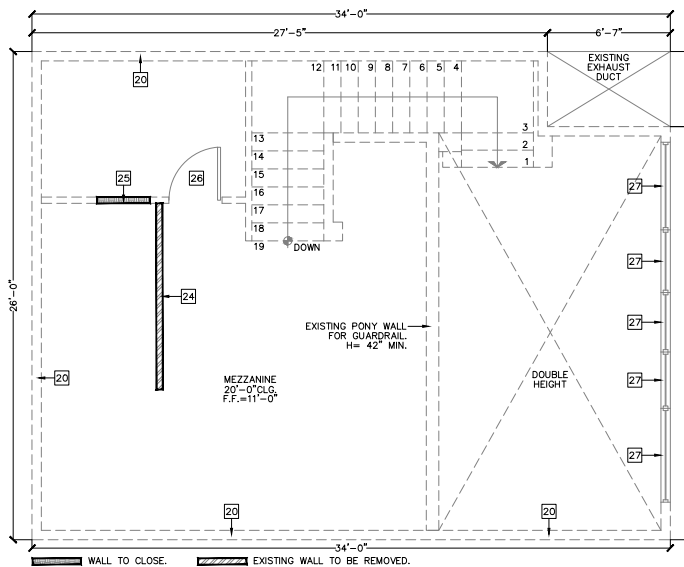
*The information contained here has been obtained from sources considered to be reliable, but no guarantee of its accuracy is made by this company. In addition, no representation is made respecting zoning, condition of title, dimensions or any matters of a legal or environmental nature. Such matters should be referred to legal counsel for determination. Terms and conditions are subject to change without prior notice. Subject to errors and omissions.*

# FLOOR PLAN

## FIRST FLOOR



## SECOND FLOOR

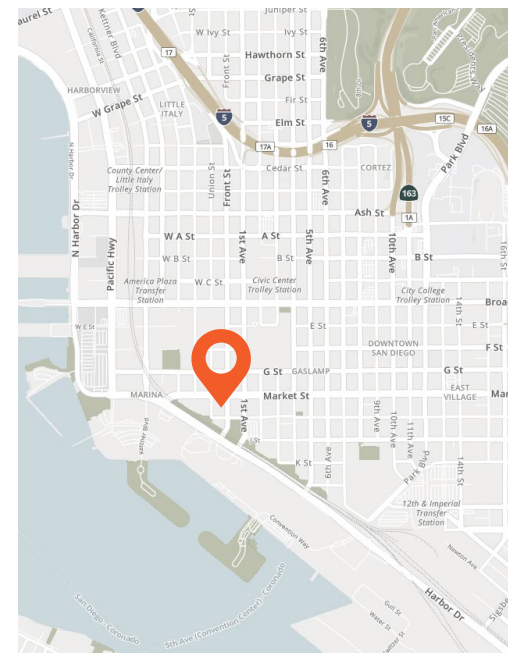
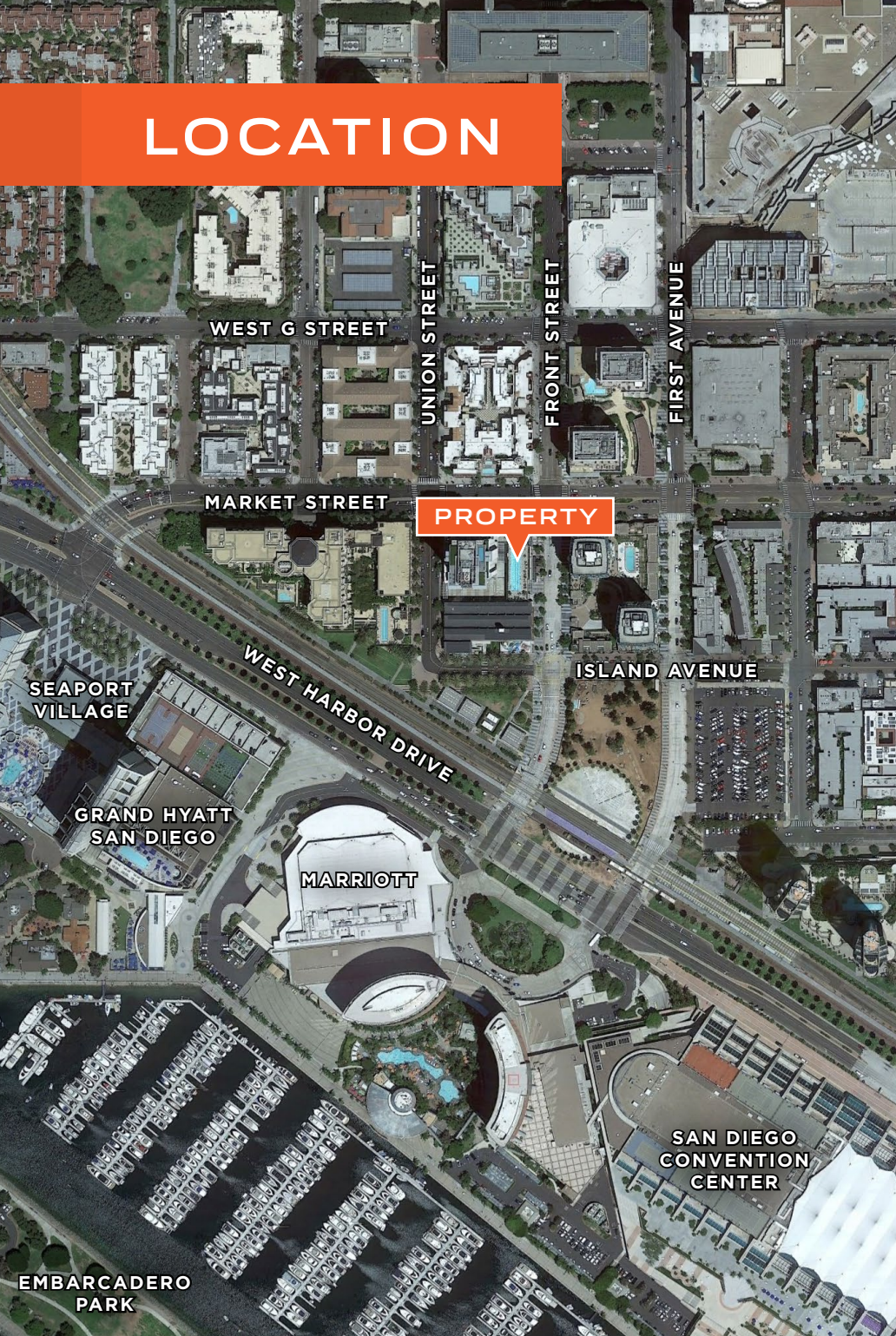


**EMMETT CAHILL**  
 619.243.8470  
 ecahill@qfcre.com  
 BRE #02033604

**PETER WRIGHT**  
 619.318.2139  
 pwright@qfcre.com  
 BRE #01846272

*The information contained here has been obtained from sources considered to be reliable, but no guarantee of its accuracy is made by this company. In addition, no representation is made respecting zoning, condition of title, dimensions or any matters of a legal or environmental nature. Such matters should be referred to legal counsel for determination. Terms and conditions are subject to change without prior notice. Subject to errors and omissions.*

# LOCATION



## LOCATION HIGHLIGHTS

Proximity to San Diego Convention Center, Seaport Village, Gaslamp Quarter and Petco Park.

Surrounded by multiple luxury hotels including Hyatt, Marriott, and Embassy Suites

## WALKING DISTANCE

to Numerous Restaurants & Retail

## STEPS TO

San Diego Convention Center

**EMMETT CAHILL**  
619.243.8470  
ecahill@qfcre.com  
BRE #02033604

**PETER WRIGHT**  
619.318.2139  
pwright@qfcre.com  
BRE #01846272

*The information contained here has been obtained from sources considered to be reliable, but no guarantee of its accuracy is made by this company. In addition, no representation is made respecting zoning, condition of title, dimensions or any matters of a legal or environmental nature. Such matters should be referred to legal counsel for determination. Terms and conditions are subject to change without prior notice. Subject to errors and omissions.*

**FOR SALE**

530 Front Street  
San Diego, CA  
92101



# Contact Information

## **QFC REAL ESTATE**

1495 Pacific Highway, Suite 450  
San Diego, CA 92101  
619.243.8454 • [qfcre.com](http://qfcre.com)

## **EMMETT CAHILL**

619.243.8470  
[ecahill@qfcre.com](mailto:ecahill@qfcre.com)  
BRE #02033604

## **PETER WRIGHT**

619.318.2139  
[pwright@qfcre.com](mailto:pwright@qfcre.com)  
BRE #01846272

*The information contained here has been obtained from sources considered to be reliable, but no guarantee of its accuracy is made by this company. In addition, no representation is made respecting zoning, condition of title, dimensions or any matters of a legal or environmental nature. Such matters should be referred to legal counsel for determination. Terms and conditions are subject to change without prior notice. Subject to errors and omissions.*