



*Scott Romney
Investment Realty, Inc.*

FOR LEASE

6132-6138 South 380 West Murray, UT 84107



- * Call to inquire lease rate
- * Approximately 6,574 square feet of main floor space available. (2,999 office and 3,575 warehouse)
- * Building can be demised!
- * Call to Inquire
- * Three (3) 10x12 Grade Level Doors
- * One (1) 12x14 Grade Level Door
- * High End office finish
- * Freestanding building
- * Ample Parking
- * Convenient I-15 Access
- * Available April 1, 2025



For more information please contact:

Office: (801) 571-1855

Spencer Romney: (801) 870-9119

Scott Romney: (801) 631-2008

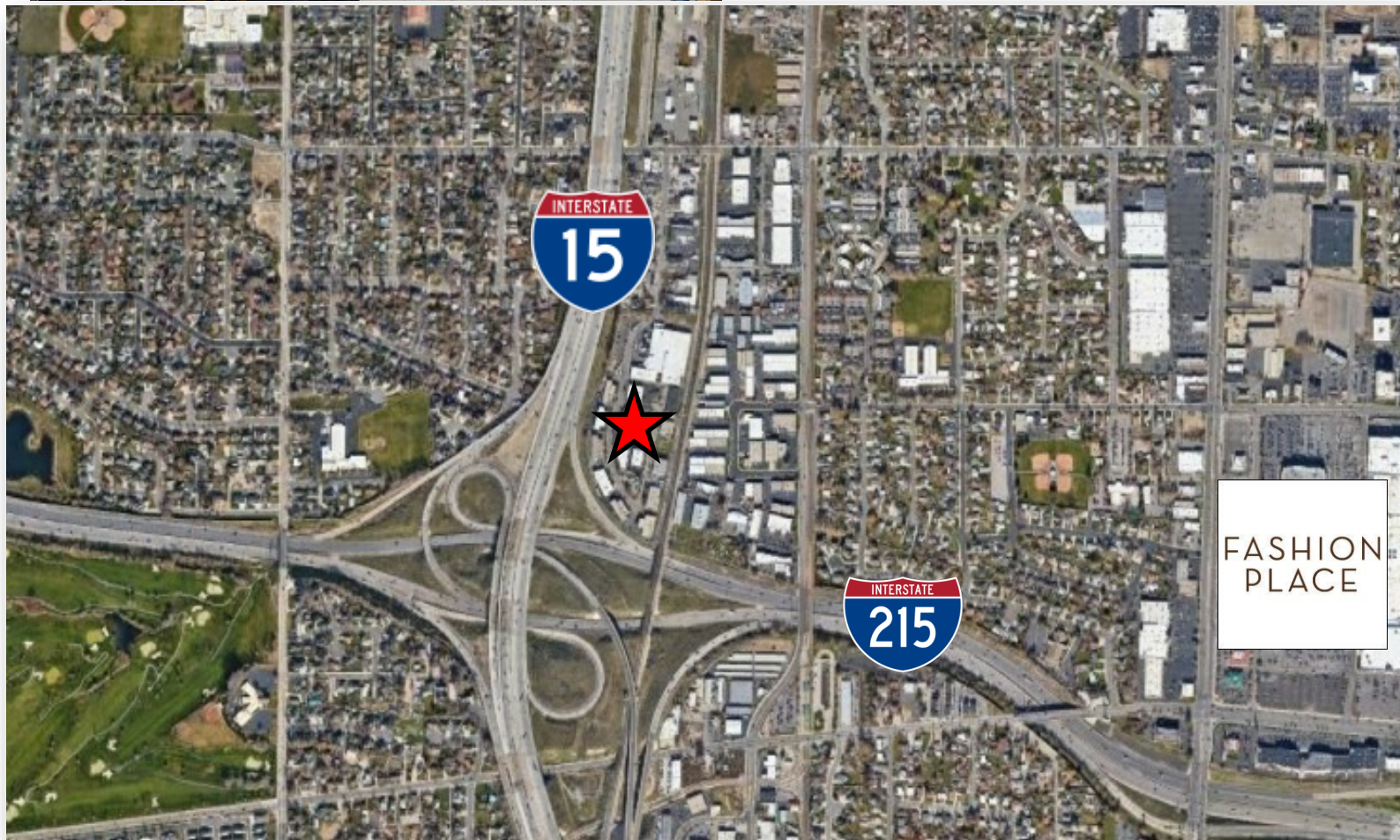


*Scott Romney
Investment Realty, Inc.*



ADDITIONAL BUILDING INFO

- * 19' WAREHOUSE CEILING CLEAR HEIGHT
- * MGC ZONING
- * FURNITURE IN OFFICE CAN BE PURCHASED
- * HEAVY 3 PHASE POWER



For more information please contact:

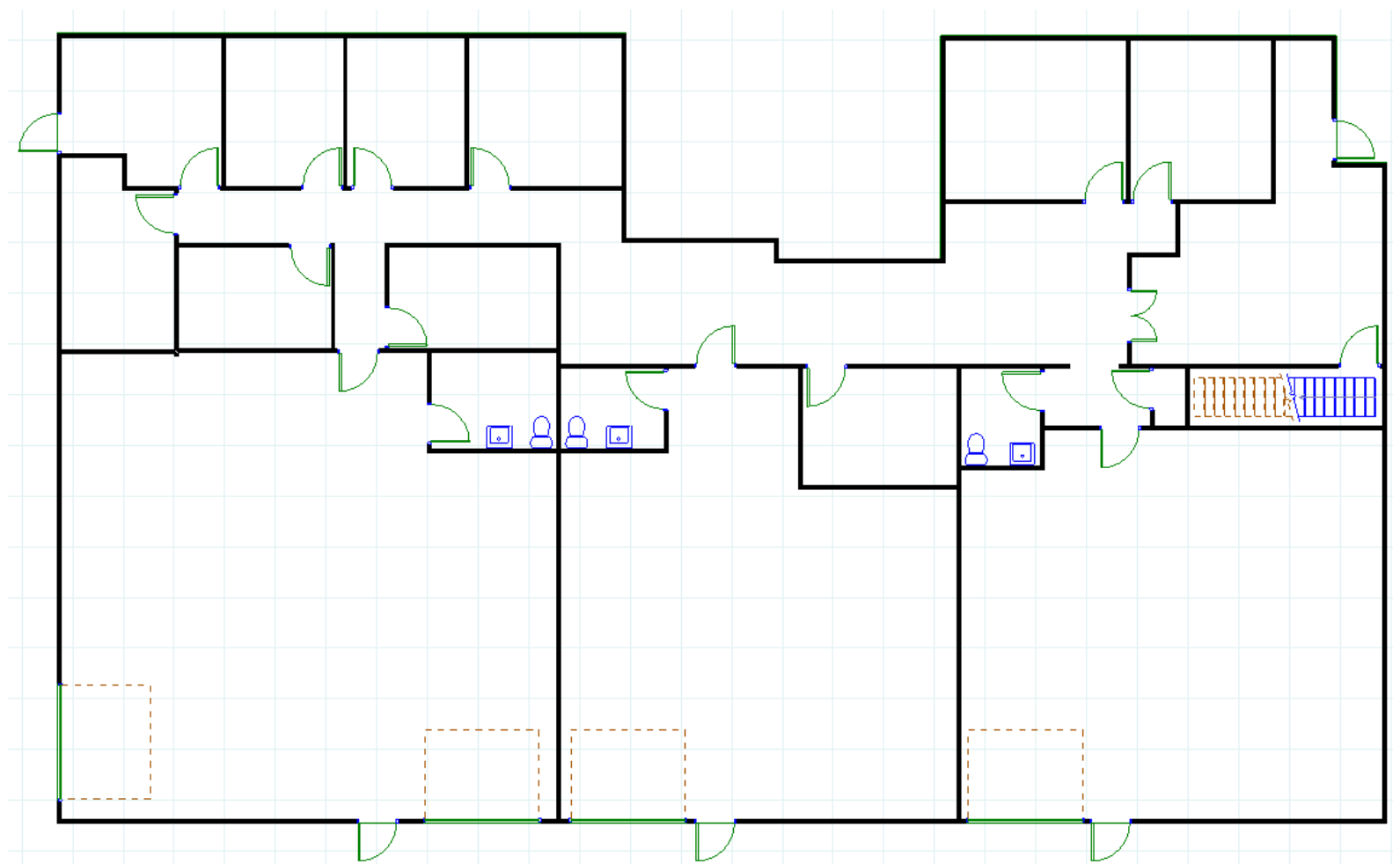
Office: (801) 571-1855

Spencer Romney: (801) 870-9119

Scott Romney: (801) 631-2008



*Scott Romney
Investment Realty, Inc.*



For more information please contact:
Office: (801) 571-1855
Spencer Romney: (801) 870-9119
Scott Romney: (801) 631-2008

While the above information was obtained from sources deemed reliable, it is not guaranteed.