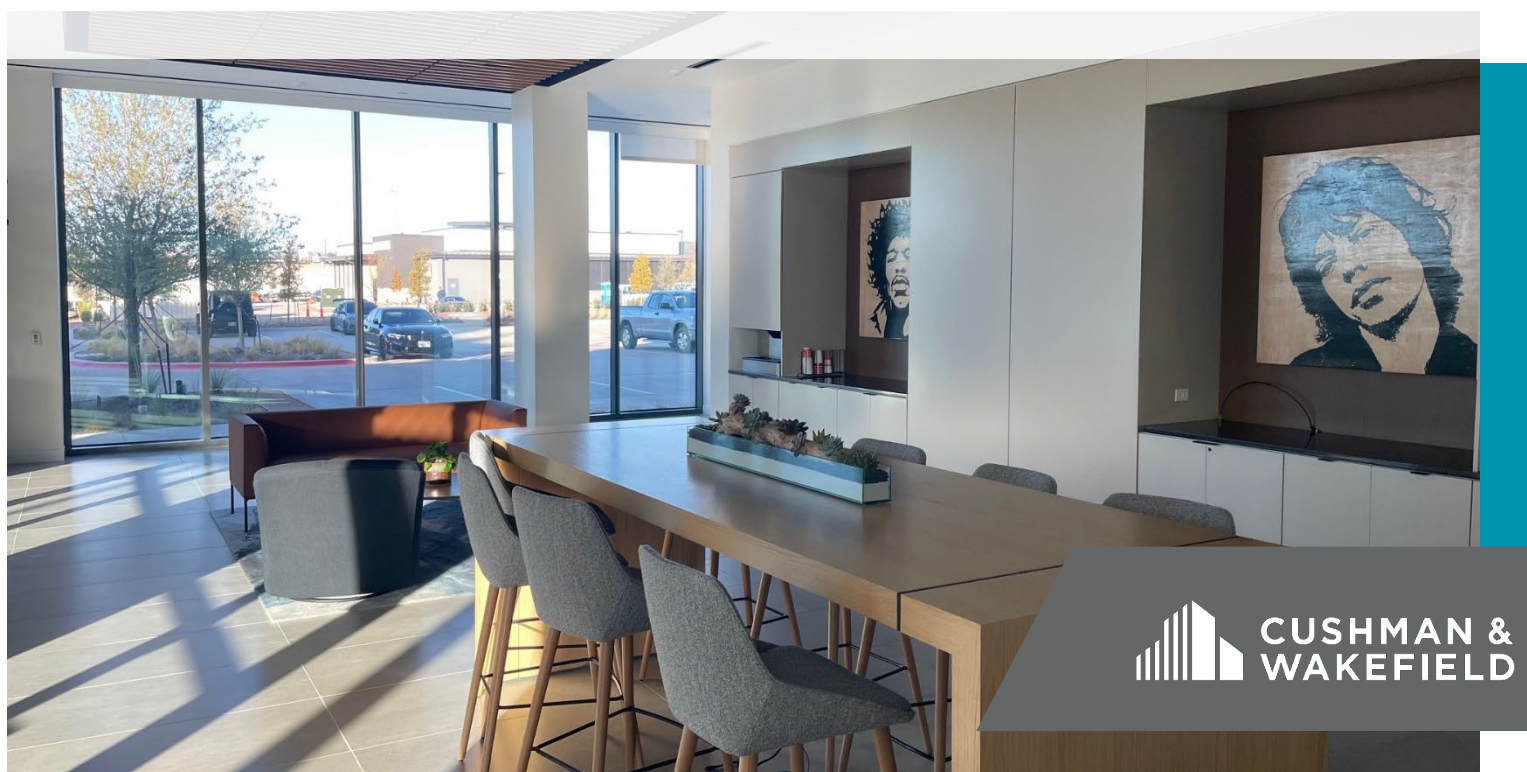




# PARKWOOD PHASE II

## 3960 DALLAS PKY, PLANO, TX 75093

4,202 RSF | SUITE 390



CUSHMAN &  
WAKEFIELD

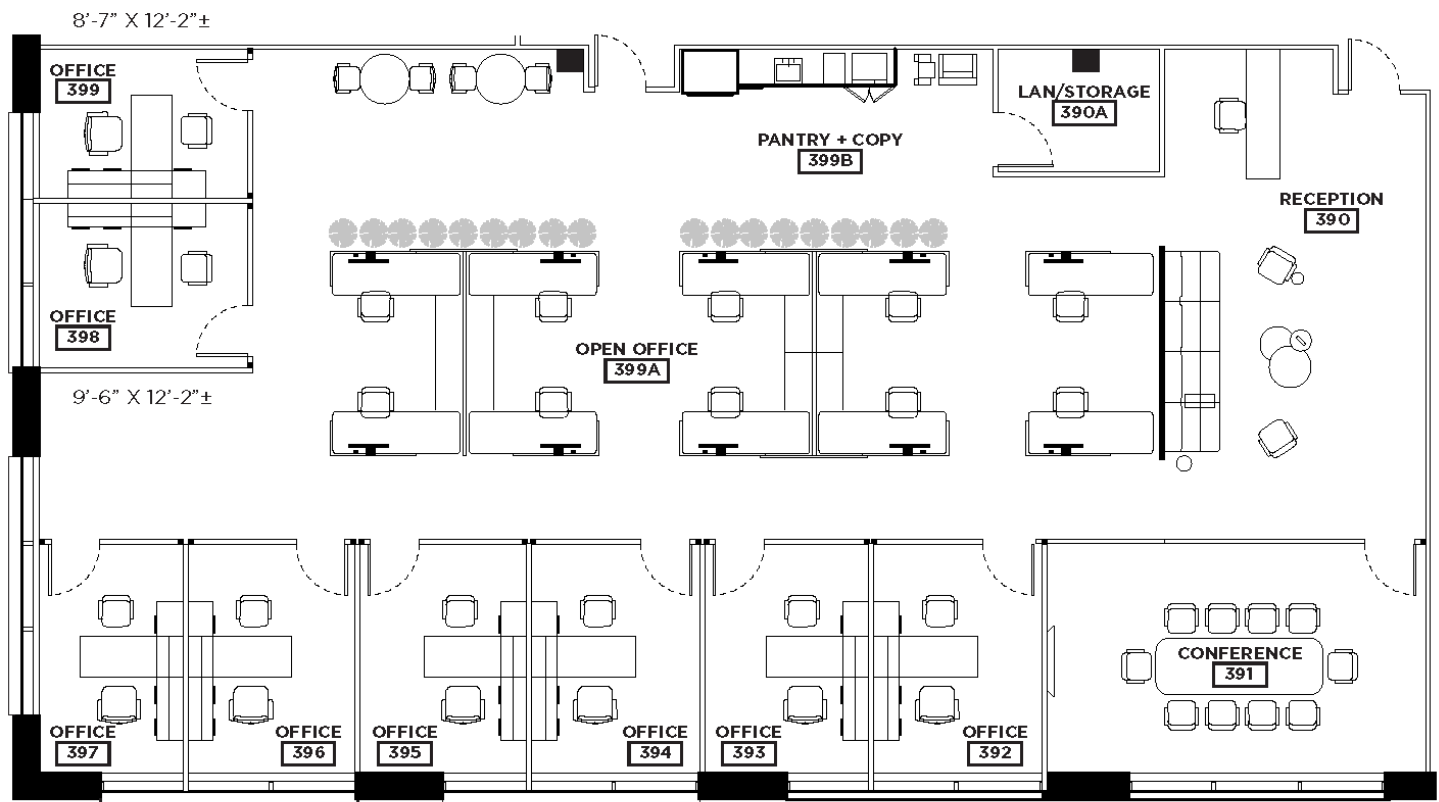


# SPACE HIGHLIGHTS

- 4,202 RSF – Suite 390
- LED 1/31/2028
- Asking Rent: \$39 NNN + E
- Brand new Spec Suite with above standard finishes and fully furnished
- 8 private offices, conference room, reception, server/storage, open kitchen and 14 workstations
- Parking: 13 garage spaces and 8 surface spaces (free of charge)



# FLOORPLAN





FOR SUBLEASE

## PARKWOOD PHASE II

3960 DALLAS PKY, PLANO, TX 75093

4,202 RSF | SUITE 390



## BUILDING HIGHLIGHTS

- New Class A Construction
- Building Completed in 2024
- Tenant Lounge / Café, Conference Center, Dining Patio, Pickleball Court, Fitness Center
- Walkable Restaurants
- Easy access off DNT





FOR SUBLEASE

## PARKWOOD PHASE II

3960 DALLAS PKY, PLANO, TX 75093

4,202 RSF | SUITE 390



**Broker Contact**  
**Charlie Beck**  
+1 972 663 9647  
[charlie.beck@cushwake.com](mailto:charlie.beck@cushwake.com)

