

PRICE REDUCED | FORMER RESTAURANT FOR SALE

1960 RAND ROAD - TORE & LUKES



1960 RAND ROAD
PALATINE, IL 60074

PROPERTY HIGHLIGHTS:

- Former Tore & Lukes Restaurant Available for Sale
- 5,850 SF Single Tenant Restaurant built in 2008
- 1.26 acre site with 75 parking spaces
- Corner site that sees over 32,000 vehicles per day
- Building is in good condition and comes with some equipment
- Multiple walk-in coolers and multiple hoods with ventilation
- 2 curb cuts and drive through already in place

The information provided herein along with any attachment(s) was obtained from sources believed to be reliable, however, Friedman Real Estate makes no guarantees, warranties, or representations as to the completeness or accuracy of such information and legal counsel is advised. All information provided is subject to verification and no liability for reliance on such information or errors or omissions is assumed. The presentation of this property is submitted subject to errors, omissions, change of price or conditions, prior sale or lease, or withdrawal without notice. Copyright © 2023 Friedman Real Estate. All rights reserved.

FOR MORE INFORMATION PLEASE CONTACT:



KELLEN DUGGAN
kellen.duggan@freg.com



VICTOR LEWIS
torrey.lewis@freg.com

312.728.1700

eCODE 098



1960 RAND ROAD, PALATINE, IL 60074

LOCATION

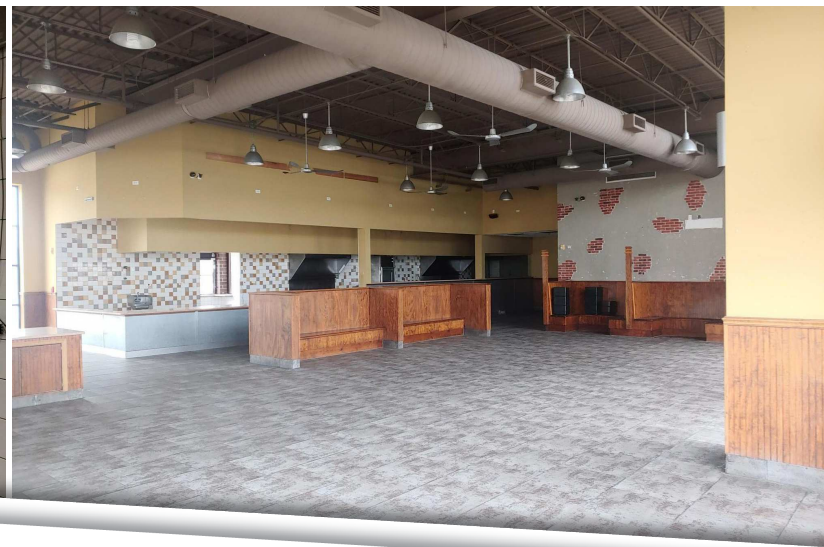


Former Tore & Lukes
Restaurant
1960 Rand Road
Palatine, IL 60074

DEMOGRAPHICS	1 MILE	3 MILES	5 MILES
Total Households	7,562	37,854	94,255
Total Population	19,975	92,030	234,388
Average HH Income	\$77,084	\$109,255	\$123,876

Map data ©2022 Google Imagery ©2022, CNES / Airbus, Maxar Technologies, U.S. Geological Survey, USDA/FPAC/GEO

1960 RAND ROAD - TORE & LUKES
PROPERTY PHOTOS



FOR MORE INFORMATION **PLEASE CONTACT:**



KELLEN DUGGAN
kellen.duggan@freg.com



VICTOR LEWIS
torrey.lewis@freg.com