

Office Suites Available



**The Plaza Shopping Center**  
16761-16789 Bernardo Center Drive  
Rancho Bernardo, CA 92128

This information is compiled from data which we believe to be correct but no liability is assumed by this company as to accuracy of such data. V1

For more information, please contact:

**Peter Orth**  
619-318-7767  
[peter.orth@cdccommercial.com](mailto:peter.orth@cdccommercial.com)  
CalBRE Lic. #00448913

**Matt Orth**  
858-736-1337  
[morth@cdccommercial.com](mailto:morth@cdccommercial.com)  
CalBRE Lic. #01884500

11440 W. Bernardo Ct., #300  
San Diego, CA 92127  
T: 760-743-8500  
[www.cdccommercial.com](http://www.cdccommercial.com)



# Property Information

## Available Office Space

16787 Bernardo Center Dr.

- ▲ **Suite A-9 - ~1,400 SF**
- ▲ **Suite A-11 - ~1,000 SF**  
Suite includes small kitchen/break room
- ▲ **Suite A14/15 - ~2,105 SF**  
Divisible to 1,109 SF & 996 SF

- ▲ Great Demographics, high income levels and a strong workforce presence in the area
- ▲ Adjacent to the 125,000 square foot Vons-anchored Rancho Bernardo Town Center Shopping Center

▲ The Plaza is an active shopping center with a strong social gathering draw

**Join:**



**Contact Broker for additional information.**

This information is compiled from data which we believe to be correct but no liability is assumed by this company as to accuracy of such data. V2

For more information, please contact:



**Peter Orth**  
619-318-7767  
[peter.orth@cdccommercial.com](mailto:peter.orth@cdccommercial.com)  
CalBRE Lic. #00448913

**Matt Orth**  
858-736-1337  
[morth@cdccommercial.com](mailto:morth@cdccommercial.com)  
CalBRE Lic. #01884500

11440 W. Bernardo Ct., #300  
San Diego, CA 92127  
T: 760-743-8500  
[www.cdccommercial.com](http://www.cdccommercial.com)

# Site Plan



This information is compiled from data which we believe to be correct but no liability is assumed by this company as to accuracy of such data. V2

For more information, please contact:

**Peter Orth**  
619-318-7767

[peter.orth@cdccommercial.com](mailto:peter.orth@cdccommercial.com)  
CalBRE Lic. #00448913

**Matt Orth**  
858-736-1337

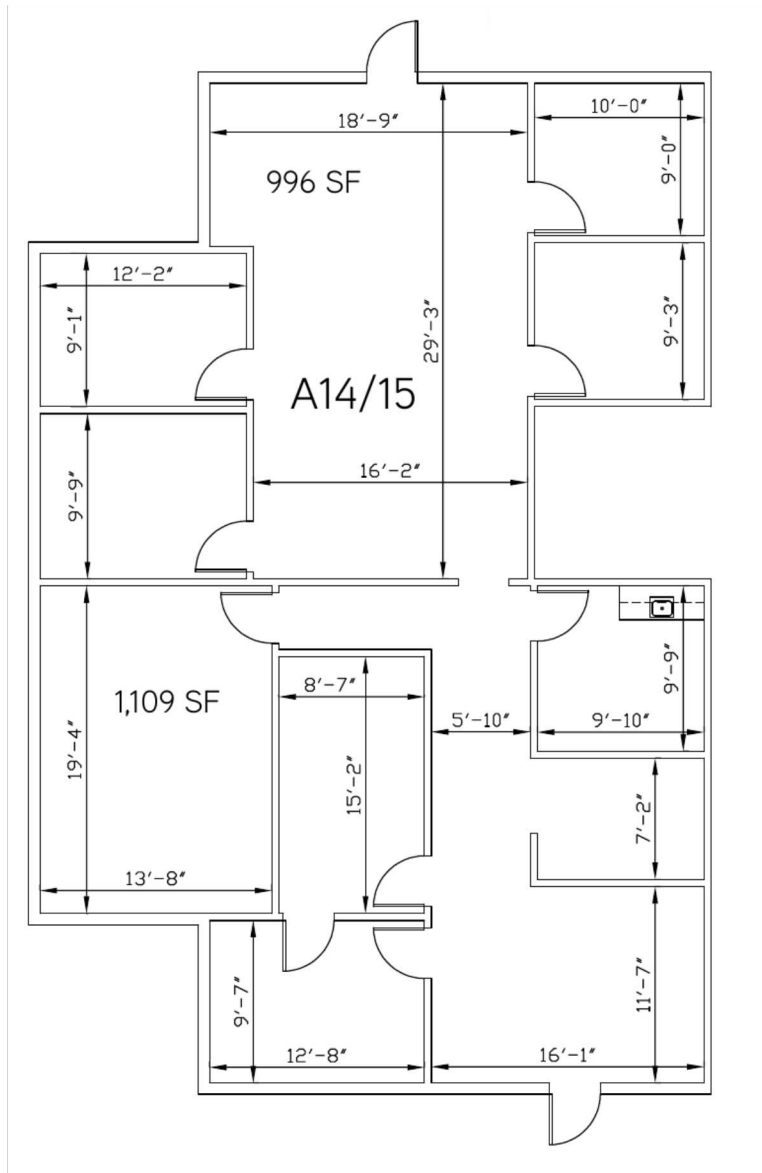
[morth@cdccommercial.com](mailto:morth@cdccommercial.com)  
CalBRE Lic. #01884500

11440 W. Bernardo Ct., #300  
San Diego, CA 92127

T: 760-743-8500  
[www.cdccommercial.com](http://www.cdccommercial.com)



# Floor Plan



**Suite A14/15 - ~2,105 SF**  
Divisible to 1,109 SF & 996 SF

This information is compiled from data which we believe to be correct but no liability is assumed by this company as to accuracy of such data. V2





# Demographics

| Population                  | 2 Mile    | 5 Mile    | 10 Mile   |
|-----------------------------|-----------|-----------|-----------|
| 2022 Total Population:      | 46,557    | 168,935   | 583,614   |
| 2027 Population Projection: | 46,642    | 170,303   | 587,929   |
| Pop Growth 2010-2022:       | 0.5%      | 0.8%      | 0.8%      |
| Median Age:                 | 45.4      | 41.5      | 38.3      |
| Households                  |           |           |           |
| 2022 Total Households:      | 18,740    | 61,180    | 194,701   |
| HH Growth 2022-2027:        | 0.2%      | 0.6%      | 0.7%      |
| Average Household Inc:      | \$142,247 | \$149,457 | \$137,766 |
| Avg Household Size:         | 2.4       | 2.7       | 2.9       |
| 2020 Avg HH Vehicles:       | 2.00      | 2.00      | 2.00      |
| Housing                     |           |           |           |
| Median Home Value:          | \$737,954 | \$781,345 | \$753,095 |
| Median Year Built:          | 1981      | 1985      | 1985      |

This information is compiled from data which we believe to be correct but no liability is assumed by this company as to accuracy of such data. V2

