

Hyde Park

1553 E HYDE PARK BLVD,, CHICAGO, ILLINOIS

METRO
COMMERCIAL REAL ESTATE

FOR LEASE // 675 SQUARE FEET



Hyde Park

PROPERTY HIGHLIGHTS

- Steps from Metra 51st/53rd (Hyde Park) stop
- Prime location fronting Hyde Park Blvd
- Located on the 6, 28, & 172 CTA bus lines

DEMOGRAPHICS

	½ MILE	1 MILE	2 MILES
TOTAL POPULATION	18,415	42,434	96,344
DAYTIME POPULATION	10,969	28,910	48,375
HOUSEHOLDS	11,477	23,316	59,526
AVG HH INCOME	\$97,148	\$118,964	\$94,395

TRAFFIC COUNTS

S LAKE PARK AVE	11,098 VPD
E HYDE PARK BLVD	4,085 VPD

WALK SCORE®

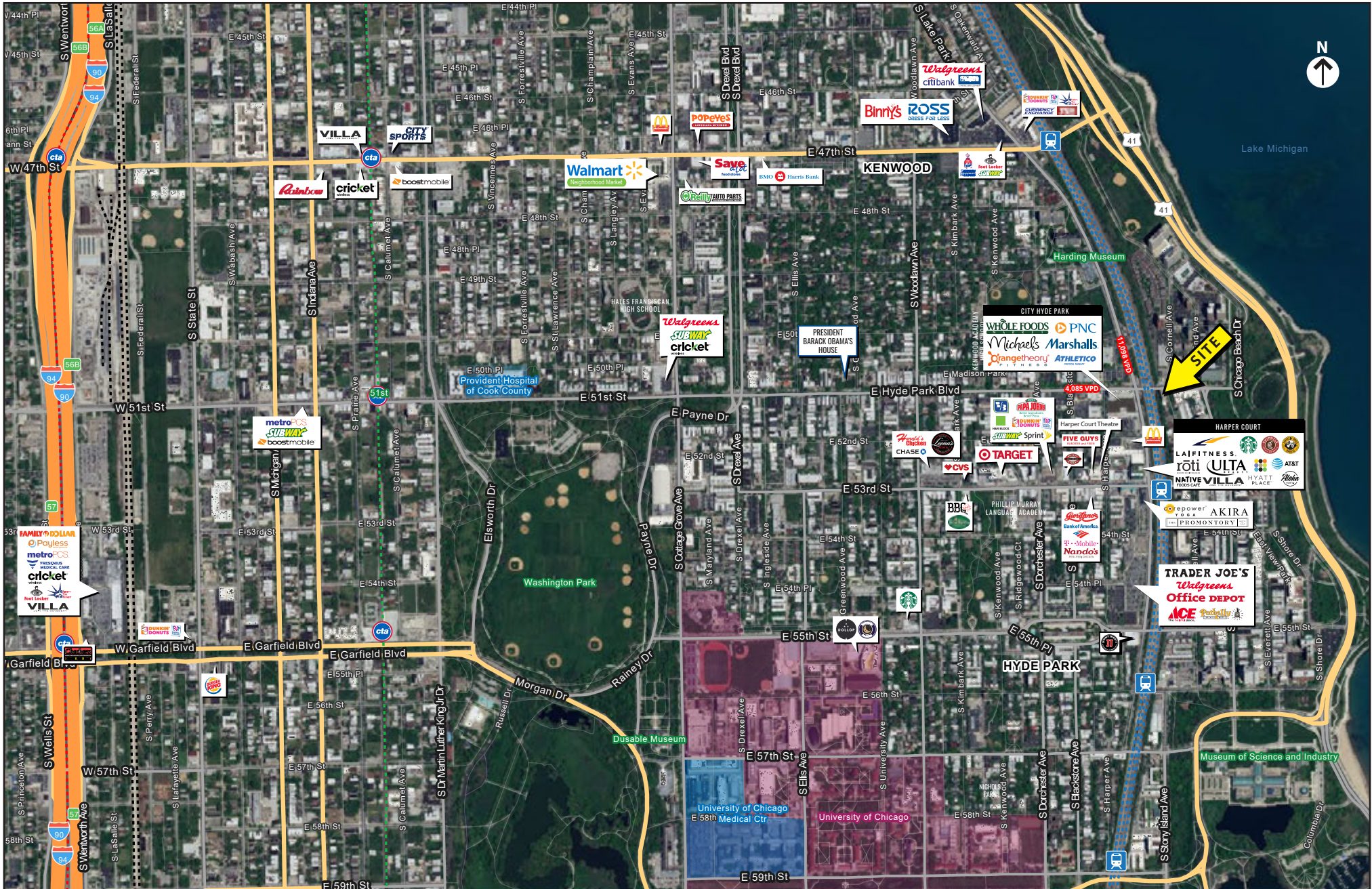
WALK SCORE	92	walker's paradise > daily errands do not require a car
TRANSIT SCORE	65	good transit > many nearby public transportation options
BIKE SCORE	94	bikers paradise > daily errands can be accomplished on a bike

CLICK [HERE](#)
OR SCAN FOR
VIRTUAL TOUR
2,308 SF



1553 E HYDE PARK BLVD, CHICAGO, IL

Hyde Park





Leasing Contacts

CHELSEA HENDERSON

CHENDERSON@METROCRE.COM

847.337.5287



WWW.METROCRE.COM

© 2022 METRO COMMERCIAL REAL ESTATE. ALL RIGHTS RESERVED. ALL INFORMATION CONTAINED HEREIN IS FROM SOURCES DEEMED RELIABLE; HOWEVER, NO REPRESENTATION OR WARRANTY IS MADE TO THE ACCURACY THEREOF.