

3904 N TEXAS AVE.

BRYAN, TX 77803



±55,404 SF ON ±6.10 ACRES AVAILABLE FOR LEASE

LEASE RATE: \$12.00/SF NNN



JACK PARKER
+1 979 260 5000x105
jparker@sagocre.com

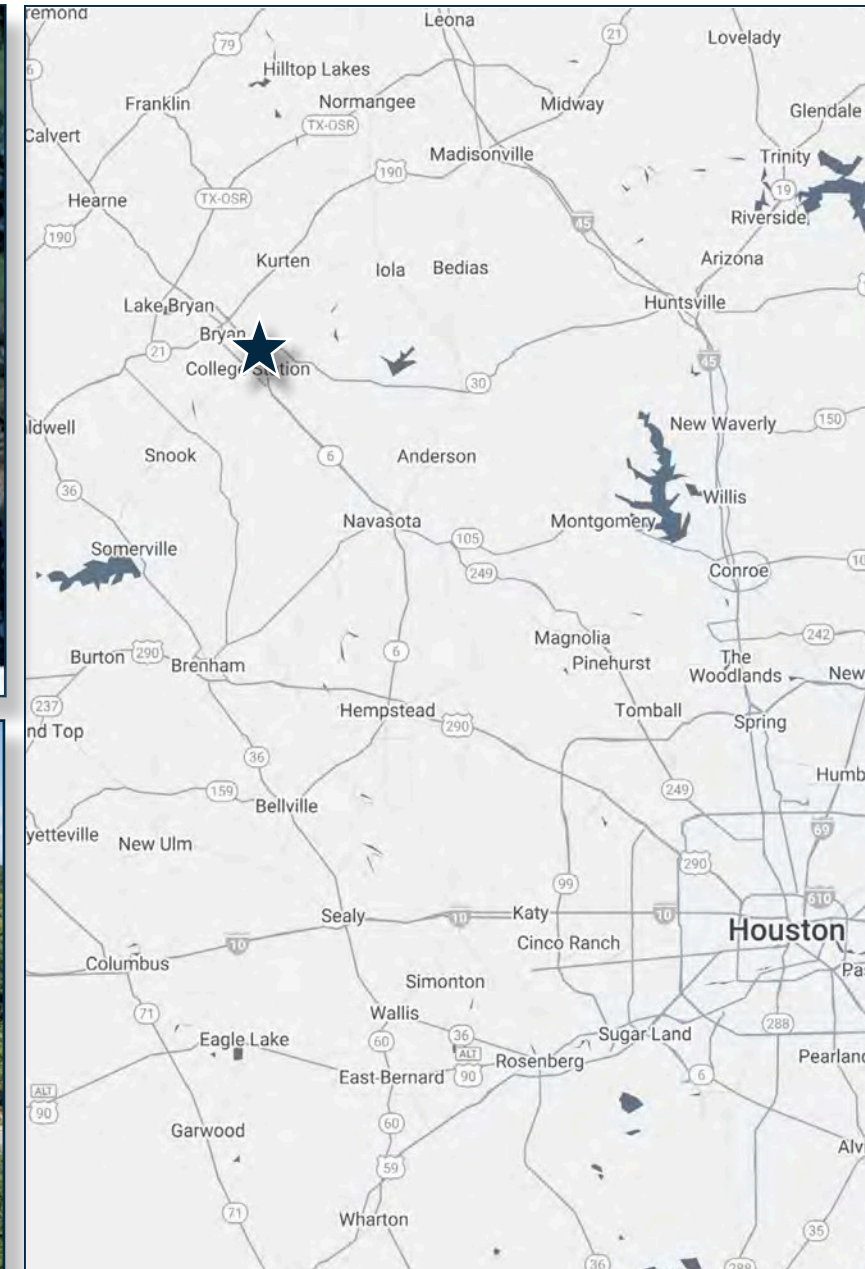
BARRY MOORE
+1 979 260 5000x103
bmoore@sagocre.com



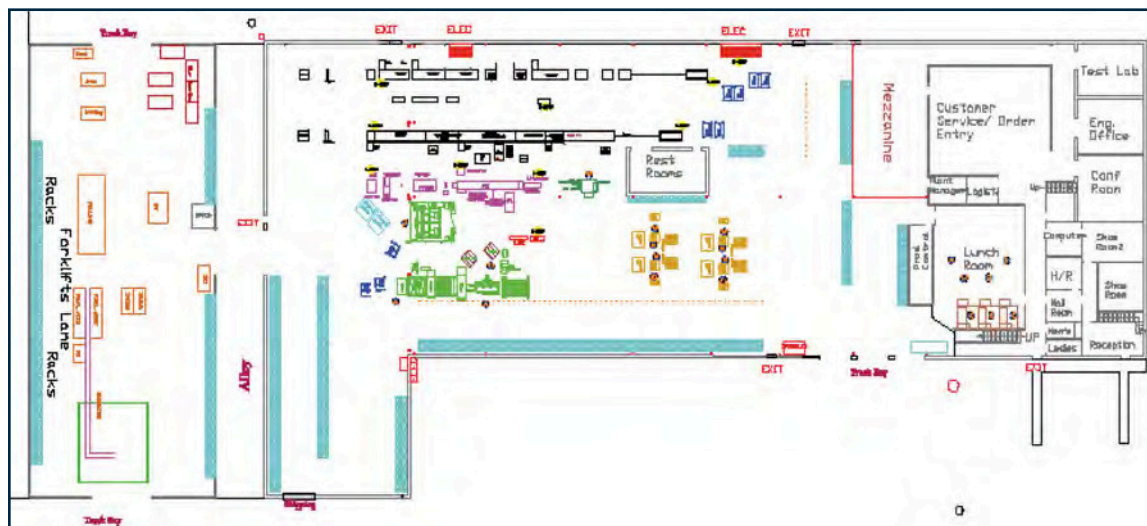
JIM STARK
Senior Vice President
+1 713 577 1776
jim.stark@cbre.com

[CLICK HERE TO SEE DRONE VIDEO](#)

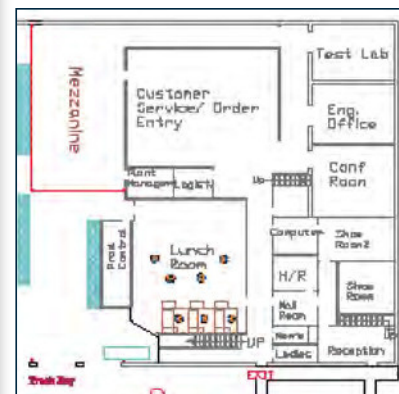
[CLICK HERE TO SEE DRONE VIDEO](#)



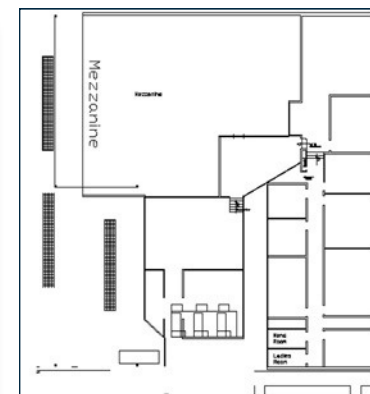
SITE PLAN



FIRST FLOOR OFFICE



SECOND FLOOR OFFICE



BUILDING HIGHLIGHTS

±55,404 SF
TOTAL SF

±14,060 SF
OFFICE SF

±41,344 SF
WAREHOUSE SF

±6.10
LAND AREA

20' - 24'
CLEAR HEIGHT

6 DOCK DOORS
1 DRIVE-IN DOOR

C-3
ZONING

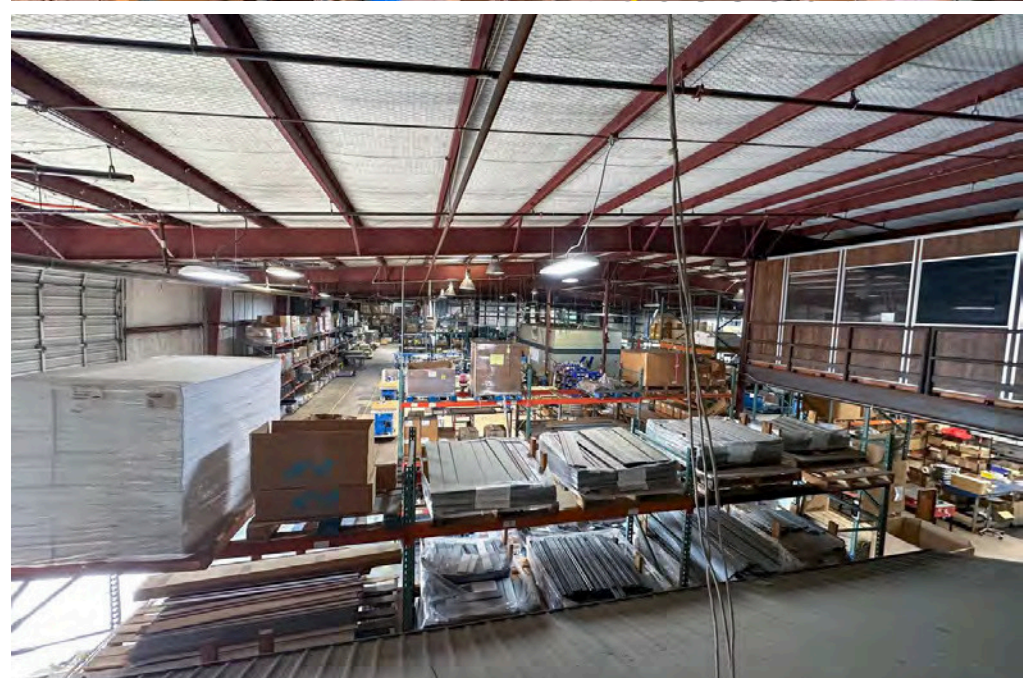
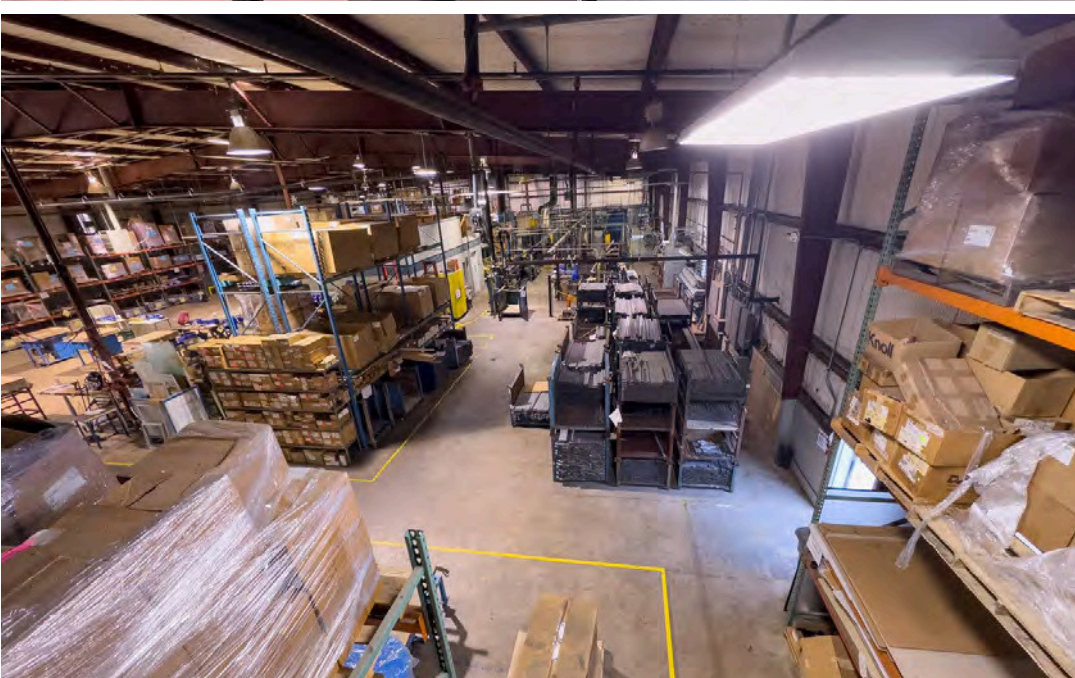
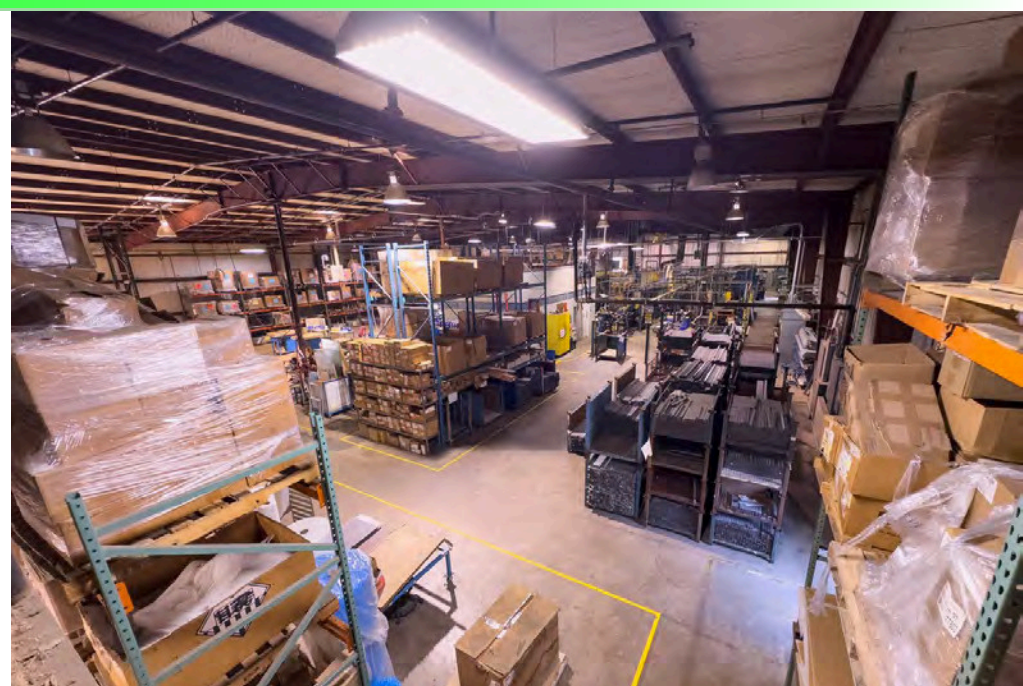
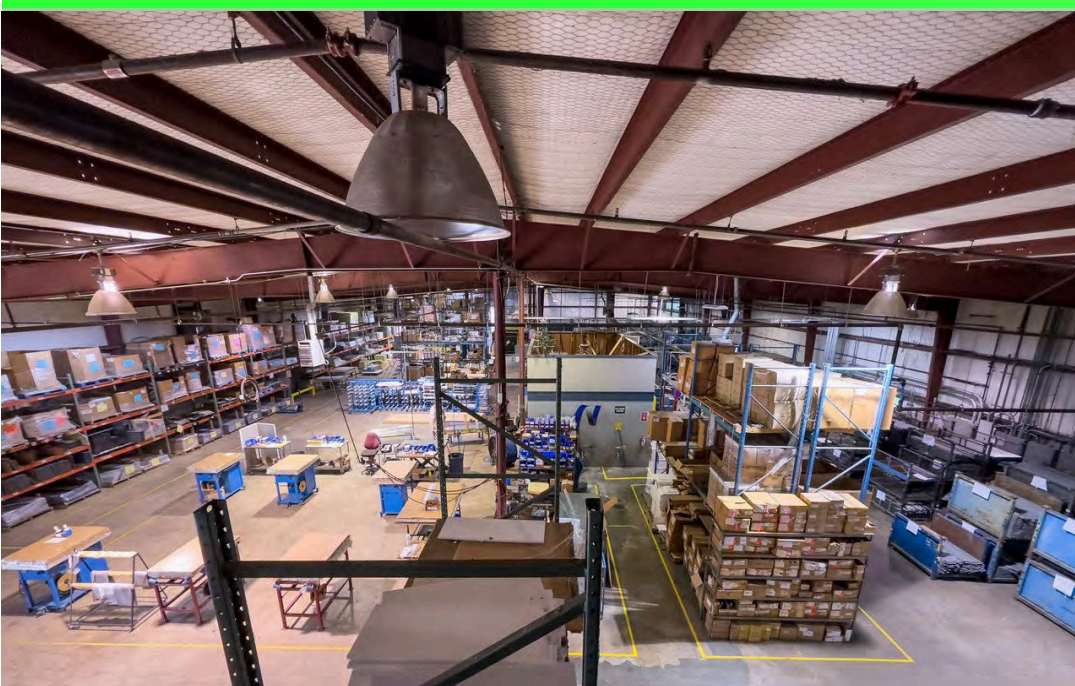
OFFICE PHOTOS

[CLICK HERE TO SEE OFFICE VIDEO](#)



WAREHOUSE PHOTOS

[CLICK HERE TO SEE WAREHOUSE VIDEO](#)



REGIONAL CONNECTIVITY



FOR LEASE

3904 N TEXAS AVE.

BRYAN, TX 77803

FOR MORE INFORMATION



JACK PARKER
+1 979 260 5000x105
jparker@sagocre.com

BARRY MOORE
+1 979 260 5000x103
bmoore@sagocre.com

CBRE

JIM STARK
Senior Vice President
+1 713 577 1776
jim.stark@cbre.com

© 2025 CBRE, Inc. All rights reserved. This information has been obtained from sources believed reliable, but has not been verified for accuracy or completeness. You should conduct a careful, independent investigation of the property and verify all information. Any reliance on this information is solely at your own risk. CBRE and the CBRE logo are service marks of CBRE, Inc. All other marks displayed on this document are the property of their respective owners, and the use of such logos does not imply any affiliation with or endorsement of CBRE. Photos herein are the property of their respective owners. Use of these images without the express written consent of the owner is prohibited.PMStudio_January2025