

# OGDEN JUNCTION OFFICE

FOR LEASE



## PROPERTY DETAILS

372 East 24th Street, Ogden, Utah 84401

LEASE RATE: \$24.00/SF FULL SERVICE

### AVAILABLE

- First floor (2,523 RSF total):
  - 2,523 RSF
- Second Floor (6,430 RSF total):
  - 6,430 RSF
- Third floor (3,342 RSF total):
  - 3,342 RSF
- Fourth floor (5,399 RSF total):
  - 1,541 SF
  - 3,858 SF
- High visibility corner location
- Located in The Junction, Ogden's downtown entertainment district
- Numerous walkable amenities
- Open space and dense layouts available
- Possible to demise
- Covered, no-cost parking at The Junction



**CHRIS FALK, CCIM, SIOR**  
cfalk@newmarkmw.com  
direct 801.499.6514  
[View Profile](#)

**BRAXTON WILLIE, CCIM**  
bwillie@newmarkmw.com  
direct 801.803.3334  
[View Profile](#)

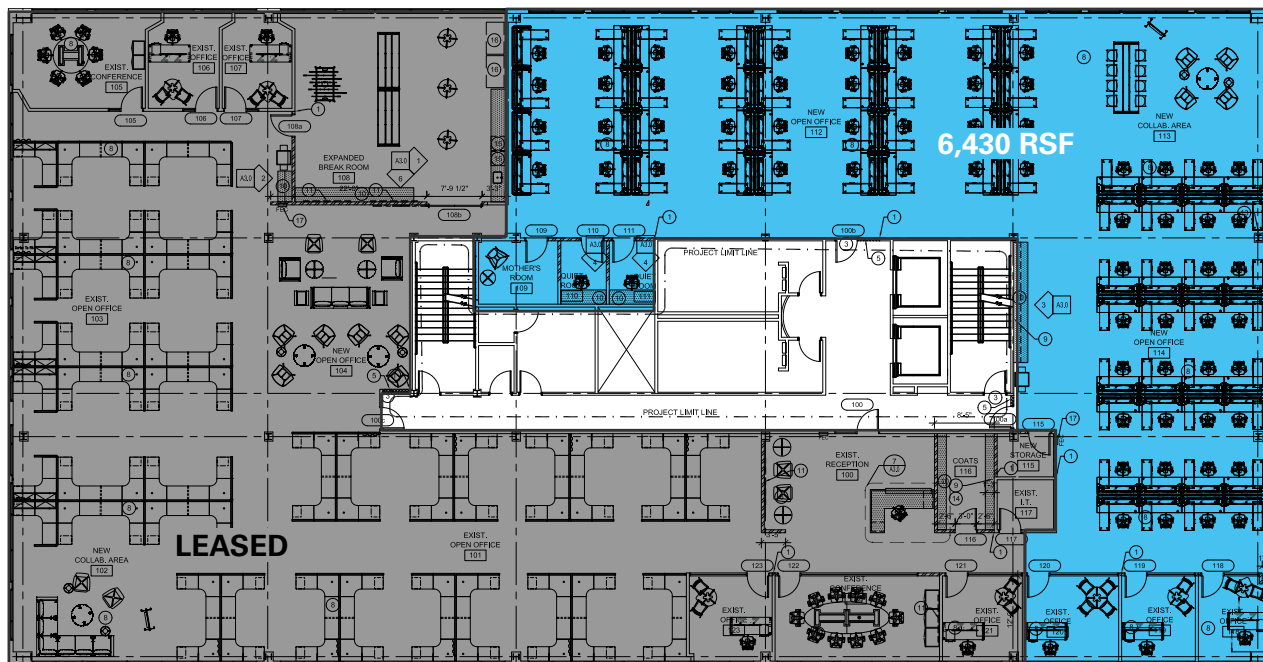
**FULL SERVICE  
COMMERCIAL REAL ESTATE**  
1410 S University Park Blvd, Ste 120  
Clearfield, Utah 84015  
Office 801.578.5580  
[www.newmarkmw.com](http://www.newmarkmw.com)

# OGDEN JUNCTION OFFICE

## FIRST FLOOR - BUILDOUT IN PROGRESS - 2,523 RSF



## SECOND FLOOR - 6,430 RSF



FLOOR PLANS



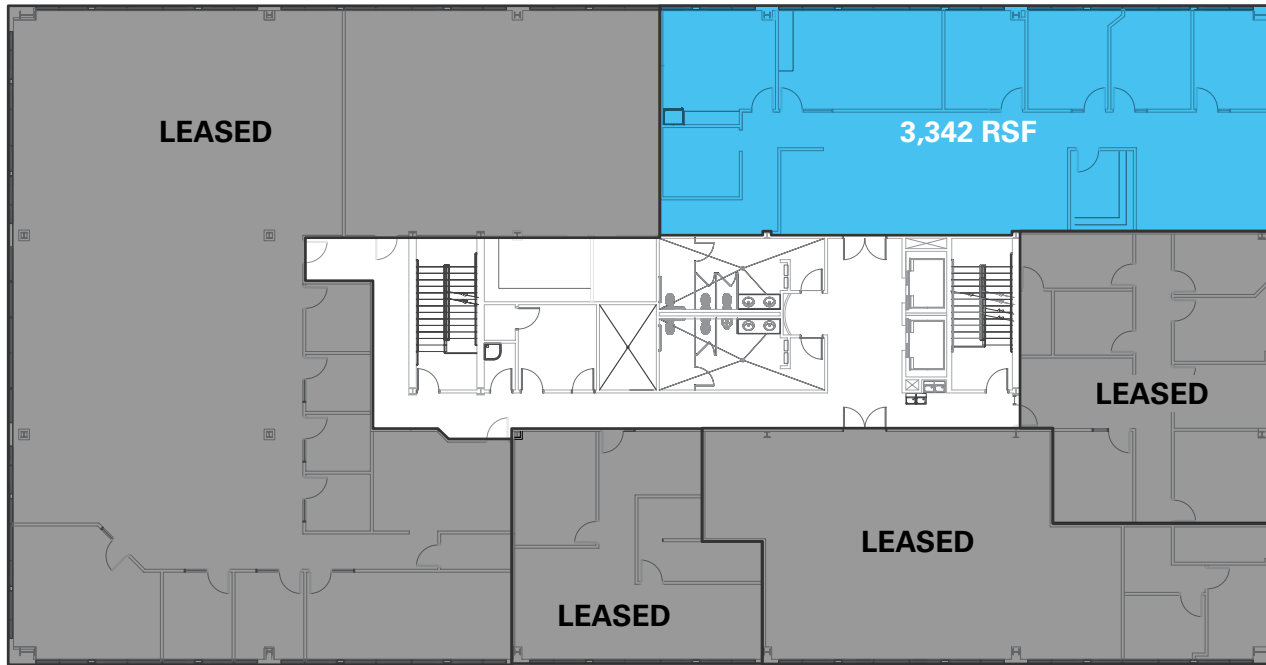
**CHRIS FALK, CCIM, SIOR**  
cfalk@newmarkmw.com  
direct 801.499.6514  
[View Profile](#)

**BRAXTON WILLIE, CCIM**  
bwillie@newmarkmw.com  
direct 801.803.3334  
[View Profile](#)

**FULL SERVICE  
COMMERCIAL REAL ESTATE**  
1410 S University Park Blvd, Ste 120  
Clearfield, Utah 84015  
Office 801.578.5580  
[www.newmarkmw.com](http://www.newmarkmw.com)

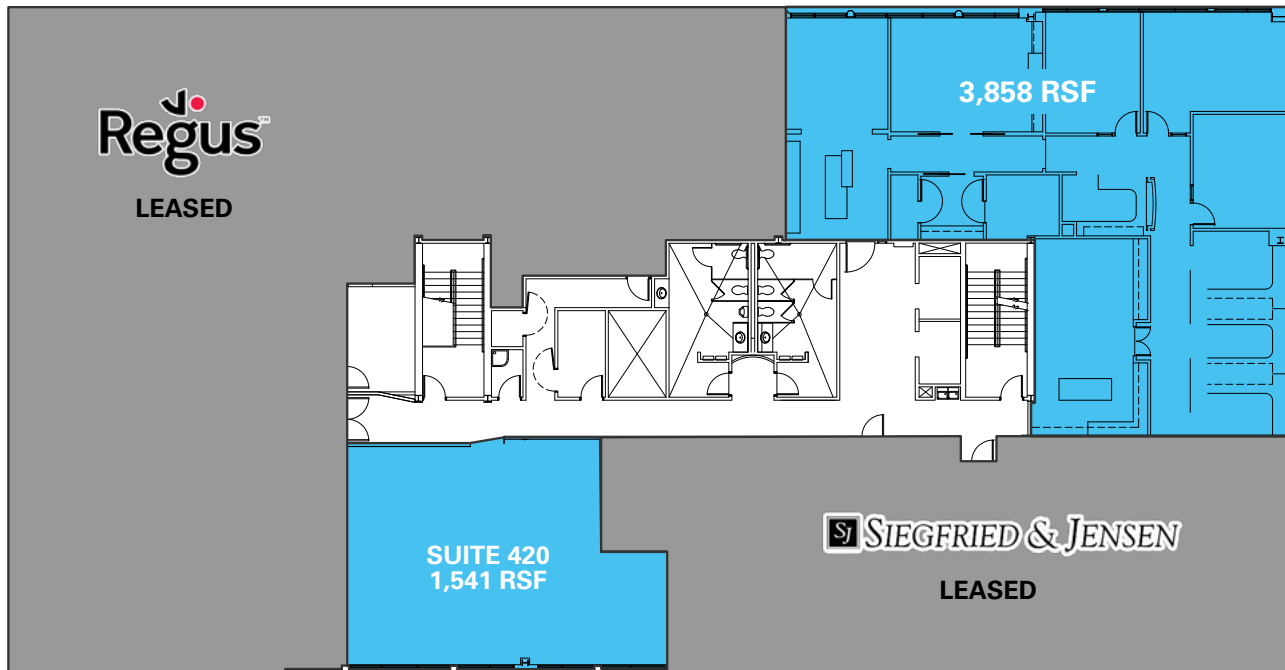
# OGDEN JUNCTION OFFICE

## THIRD FLOOR - 3,342 RSF



FLOOR PLANS

## FOURTH FLOOR - 5,399 RSF - FF&E COULD BE NEGOTIATED



**CHRIS FALK, CCIM, SIOR**  
cfalk@newmarkmw.com  
direct 801.499.6514  
[View Profile](#)

**BRAXTON WILLIE, CCIM**  
bwillie@newmarkmw.com  
direct 801.803.3334  
[View Profile](#)

**FULL SERVICE  
COMMERCIAL REAL ESTATE**  
1410 S University Park Blvd, Ste 120  
Clearfield, Utah 84015  
Office 801.578.5580  
[www.newmarkmw.com](http://www.newmarkmw.com)



