



# SOUTH PARK GROUP

[www.southparkgroup.com](http://www.southparkgroup.com)



## FOR LEASE

### RESTAURANT

1155 North Highland Avenue  
Los Angeles, California 90038

Prime restaurant space in close proximity to post production and pre-production studios. Key money is \$250,000 with Type 47 Liquor License available to purchase.

#### AVAILABLE SPACE

**Size:** Approx. 3,200 rentable sqft

**Rate:** \$5.10 per sqft, NNN (\$0.50)

**Parking:** Street parking only

#### JACK RAVAN

Tel. 323.782.1270

E. [jackravan@southparkgroup.com](mailto:jackravan@southparkgroup.com)

No. 00890189

#### ETHAN WEBSTER

Tel. 323.782.1260

E. [ethan@southparkgroup.com](mailto:ethan@southparkgroup.com)

No. 02225923

SOUTH PARK GROUP | 8322 Beverly Blvd., Suite 301 | Los Angeles, CA 90048

This information has been furnished by sources that we deem reliable, but for which we assume no liability. The information contained herein is given, in confidence, with the understanding that all negotiations pertaining to this property be handled through the submitting office. All measurements are approximate.

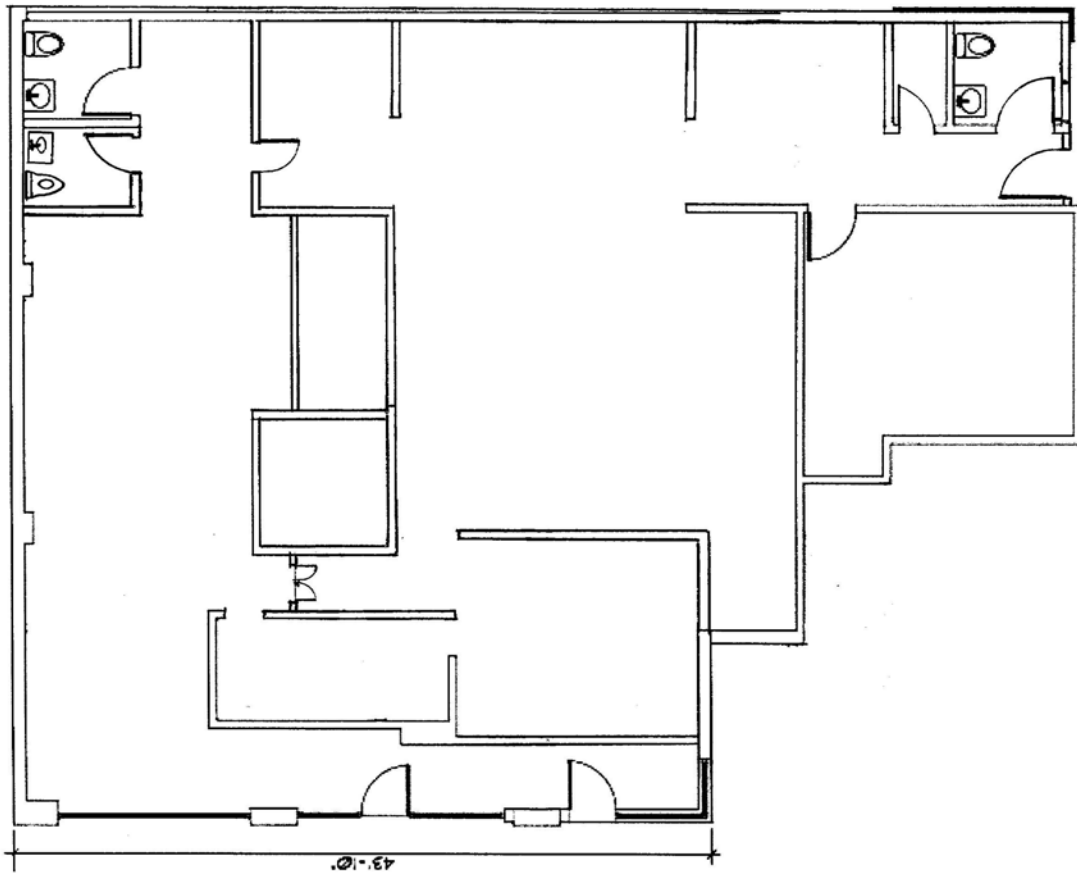


# SOUTH PARK GROUP

[www.southparkgroup.com](http://www.southparkgroup.com)

## FLOOR PLAN

1155 N. Highland Avenue, Los Angeles, California 90038



**HIGHLAND AVENUE**

**LEXINGTON AVENUE**

**SOUTH PARK GROUP | 8322 Beverly Blvd., Suite 301 | Los Angeles, CA 90048**

This information has been furnished by sources that we deem reliable, but for which we assume no liability. The information contained herein is given, in confidence, with the understanding that all negotiations pertaining to this property be handled through the submitting office. All measurements are approximate.





# SOUTH PARK GROUP

[www.southparkgroup.com](http://www.southparkgroup.com)

## INTERIOR

1155 N. Highland Avenue, Los Angeles, California 90038



**SOUTH PARK GROUP | 8322 Beverly Blvd., Suite 301 | Los Angeles, CA 90048**

This information has been furnished by sources that we deem reliable, but for which we assume no liability. The information contained herein is given, in confidence, with the understanding that all negotiations pertaining to this property be handled through the submitting office. All measurements are approximate.