

# FOR LEASE

OFFICE SPACE

35 E. 10<sup>TH</sup> STREET

TRACY, CA



## AVAILABLE SUITE:

Suite C: ±619 sq. ft.

## LEASE RATE:

Suite C: \$1,750 per month - Gross

## FEATURES:

- Attractive two story office building
- Common restrooms
- 24/7/365 building access
- Ample on-site parking
- Downtown Tracy location



**SOUZA**  
**REALTY &**  
**DEVELOPMENT**

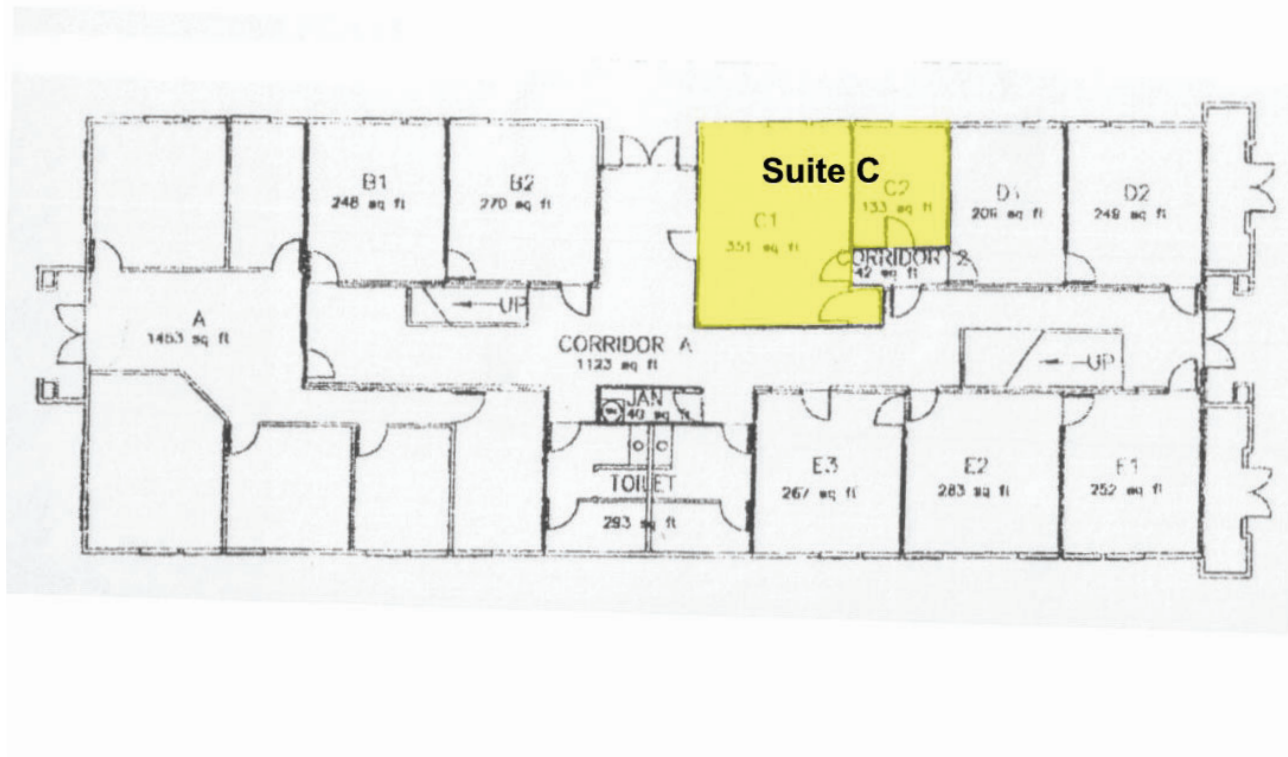
For further information, please contact:

**Mike Glazzy**  
**DRE #01204579**  
**mglazzy@souzard.com**

**672 West 11th Street • Suite 108 • Tracy, CA 95376**  
**(209) 229-7767**

The information provided herein has been secured from sources we believe to be reliable, but we make no representation or warranties, express or implied, as to the accuracy of the information. All information should be verified prior to sale or lease.

## FIRST FLOOR PLAN



## SECOND FLOOR PLAN

