

29610 SOUTHFIELD ROAD
SOUTHFIELD, MICHIGAN

OFFICE FOR LEASE
190 – 1,693 Square Feet Available



**SIGNATURE
ASSOCIATES**
KNOW SIGNATURE | KNOW RESULTS



PROPERTY FEATURES

- 228-1,693 square feet suites available:
 - Suite 100: 1,693 Sq. Ft.
 - Suite 107: 750 Sq. Ft.
 - Suite 110: 698 Sq. Ft.
 - Suite 200: 266 Sq. Ft.
 - Suite 201: 228 Sq. Ft.
 - Suite 202: 190 Sq. Ft.
- Professionally managed
- Located on heavily traveled Southfield Rd
- Available immediately
- Lease Rate: \$15.00/sq. ft. Gross



For more information, please contact:

JEFFREY TREPECK
(248) 359 0626
jtrepeck@signatureassociates.com

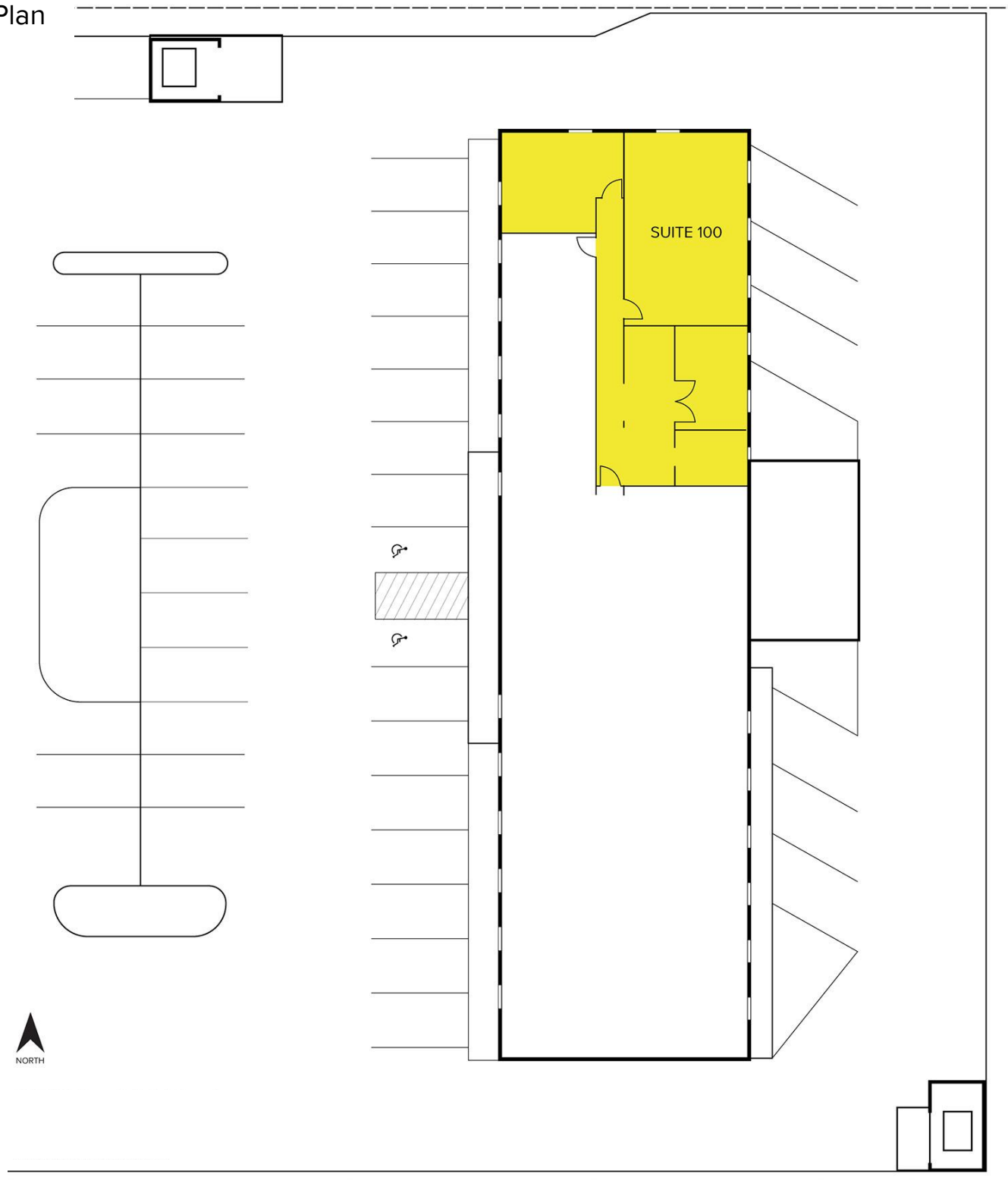
SIGNATURE ASSOCIATES
One Towne Square, Suite 1200
Southfield, MI 48076
www.signatureassociates.com

29610 Southfield Road – Southfield, Michigan

Office For Lease

190-1,635
Square Feet
AVAILABLE

Site Plan



For more information, please contact:

JEFFREY TREPECK

(248) 359 0626

jtrepeck@signatureassociates.com

SIGNATURE ASSOCIATES
One Towne Square, Suite 1200
Southfield, MI 48076
www.signatureassociates.com

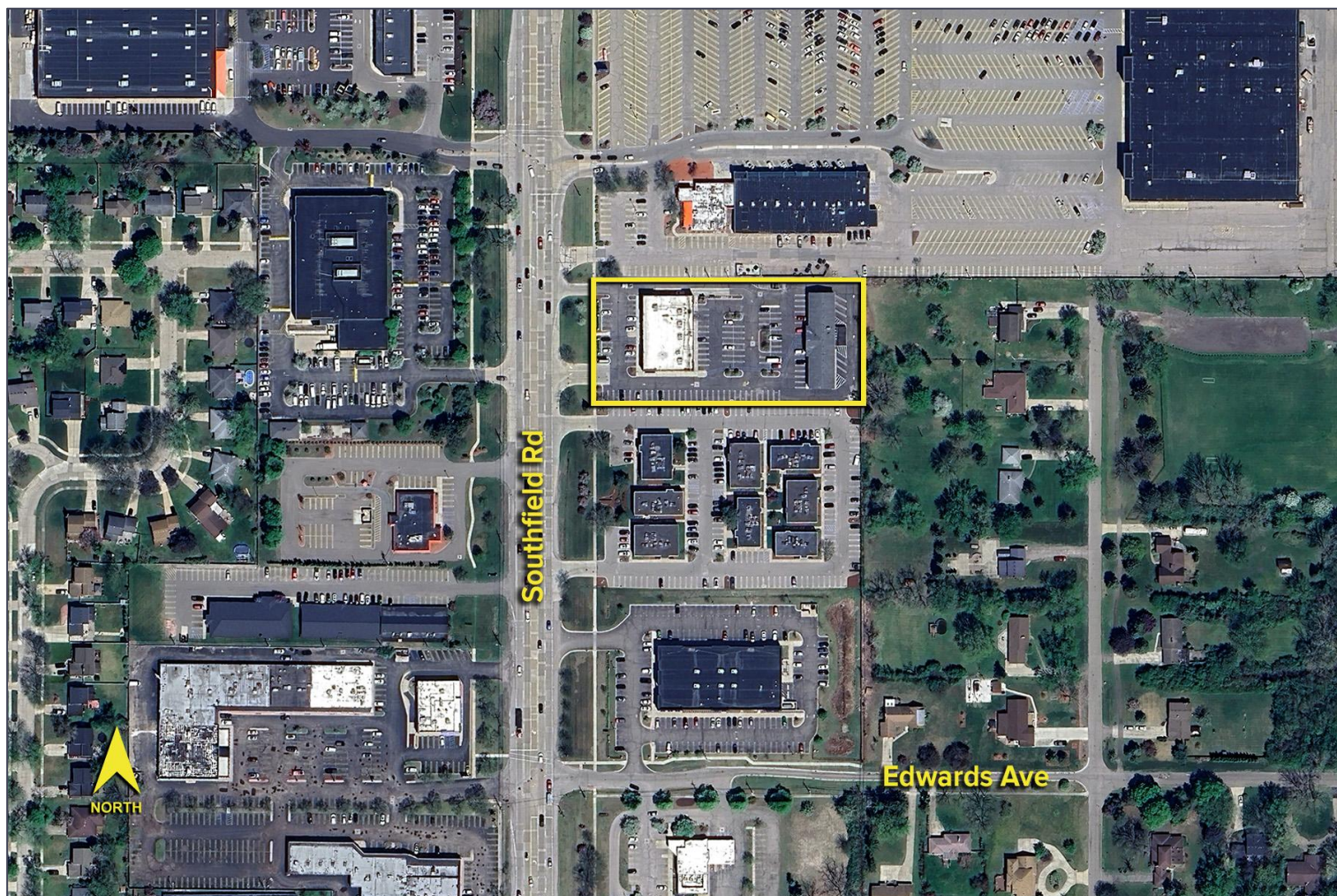
Information is subject to verification and no liability for errors or omissions is assumed. Price is subject to change and listing withdrawal.

29610 Southfield Road – Southfield, Michigan

Office For Lease

190-1,635
Square Feet
AVAILABLE

Aerial



For more information, please contact:

JEFFREY TREPECK

(248) 359 0626

jtrepeck@signatureassociates.com

SIGNATURE ASSOCIATES
One Towne Square, Suite 1200
Southfield, MI 48076
www.signatureassociates.com

Information is subject to verification and no liability for errors or omissions is assumed. Price is subject to change and listing withdrawal.