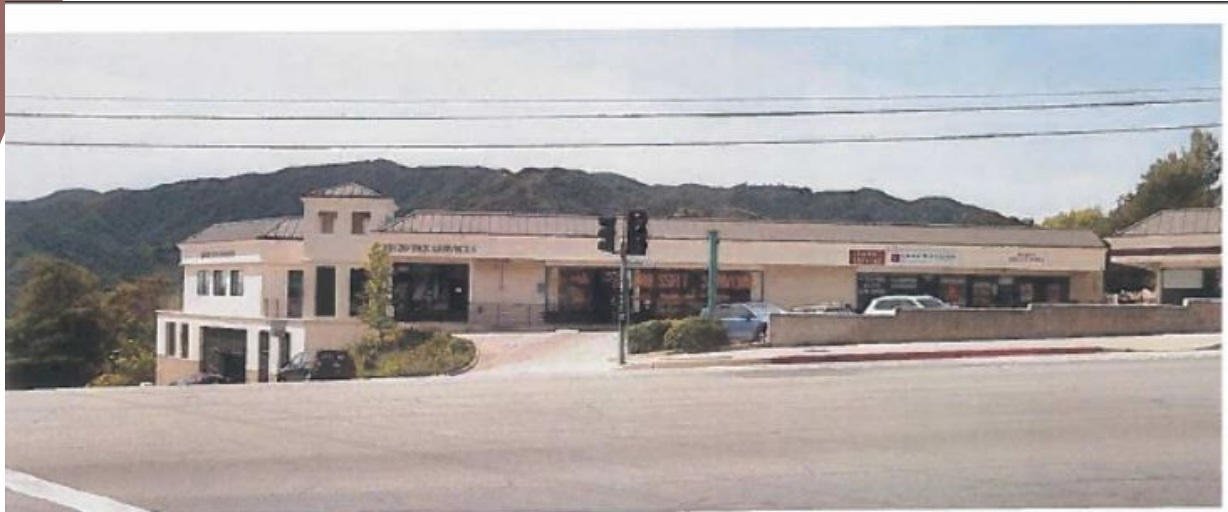


3800 Foothill Blvd., Glendale, CA



## **Education Center**

**Built Out Education Center for Tutor and/or Language Center**

**Multiple Classrooms & Offices**

**2 ADA Compliant Restrooms**

**Reception Area**

**Kitchenette**

**Approx: 2,000 RSF**

Additional Retail Space:

Approx: 1,108 RSF

*High traffic along Foothill Blvd. Surrounded by diverse retail.*

*Signalized corner of Foothill Blvd. & Boston Ave.*

*On the border of Glendale & La Crescenta.*

*Easy access to the #210 Freeway*

*Great Curb Appeal!*

**Sauvé & Associates**

**Commercial Real Estate**

Kent Kachigian [kentk@sauverec.com](mailto:kentk@sauverec.com)

Cell: 818.681.2148

DRE# 01998046 Sauvé & Associates: DRE #02117417

12 South Raymond Avenue, Suite A, Pasadena, CA 91105