



For Lease

Mike Christensen
+1 208 724 1064
mike.christensen@colliers.com

David Cadwell
+1 208 850 3733
david.cadwell@colliers.com

755 West Front Street, Suite 300
Boise, Idaho 83702
+1 208 345 9000
colliers.com/idaho

Broadway Park 2100 Broadway Avenue | Boise, ID

Highlights:

- Retail and service retail space available for lease
- Located on Broadway near Boise State University
- Great Demographics
- Pylon signage available
- Creative landlord ready to make deals
- Strong traffic counts of 25,000 VPD

This document has been prepared by Colliers for advertising and general information only. Colliers makes no guarantees, representations or warranties of any kind, expressed or implied, regarding the information including, but not limited to, warranties of content, accuracy and reliability. Any interested party should undertake their own inquiries as to the accuracy of the information. Colliers excludes unequivocally all inferred or implied terms, conditions and warranties arising out of this document and excludes all liability for loss and damages arising there from. This publication is the copyrighted property of Colliers and /or its licensor(s). © 2026. All rights reserved. This communication is not intended to cause or induce breach of an existing listing agreement. Colliers Paragon, LLC.

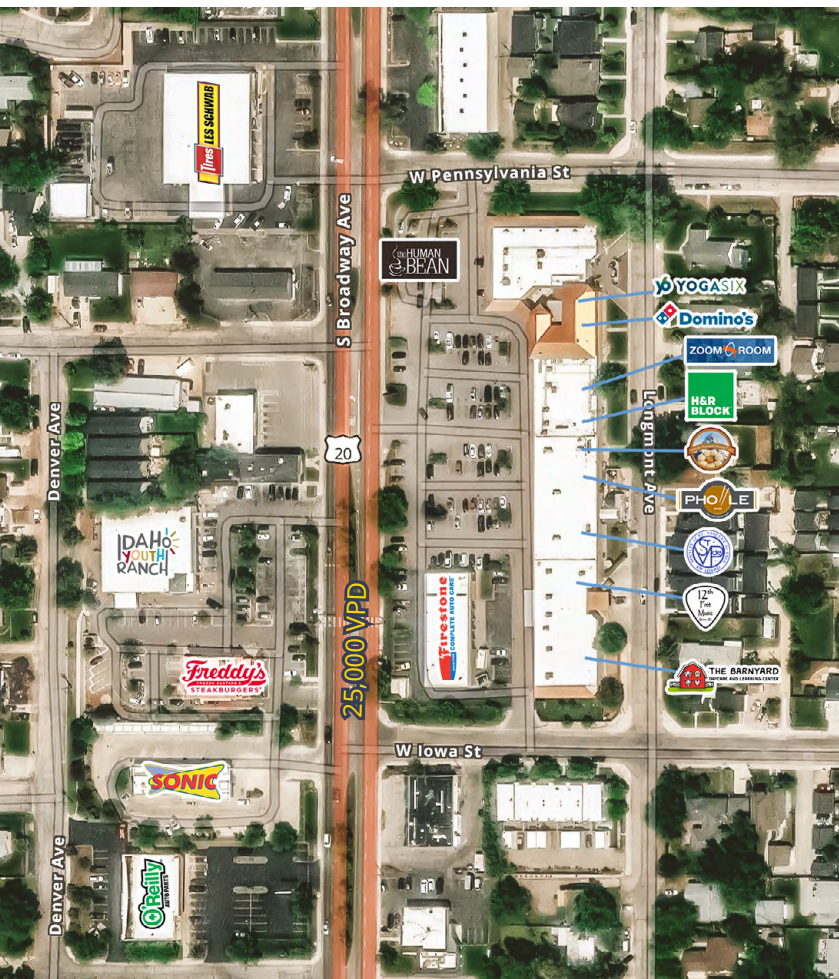
For Lease

Property Information

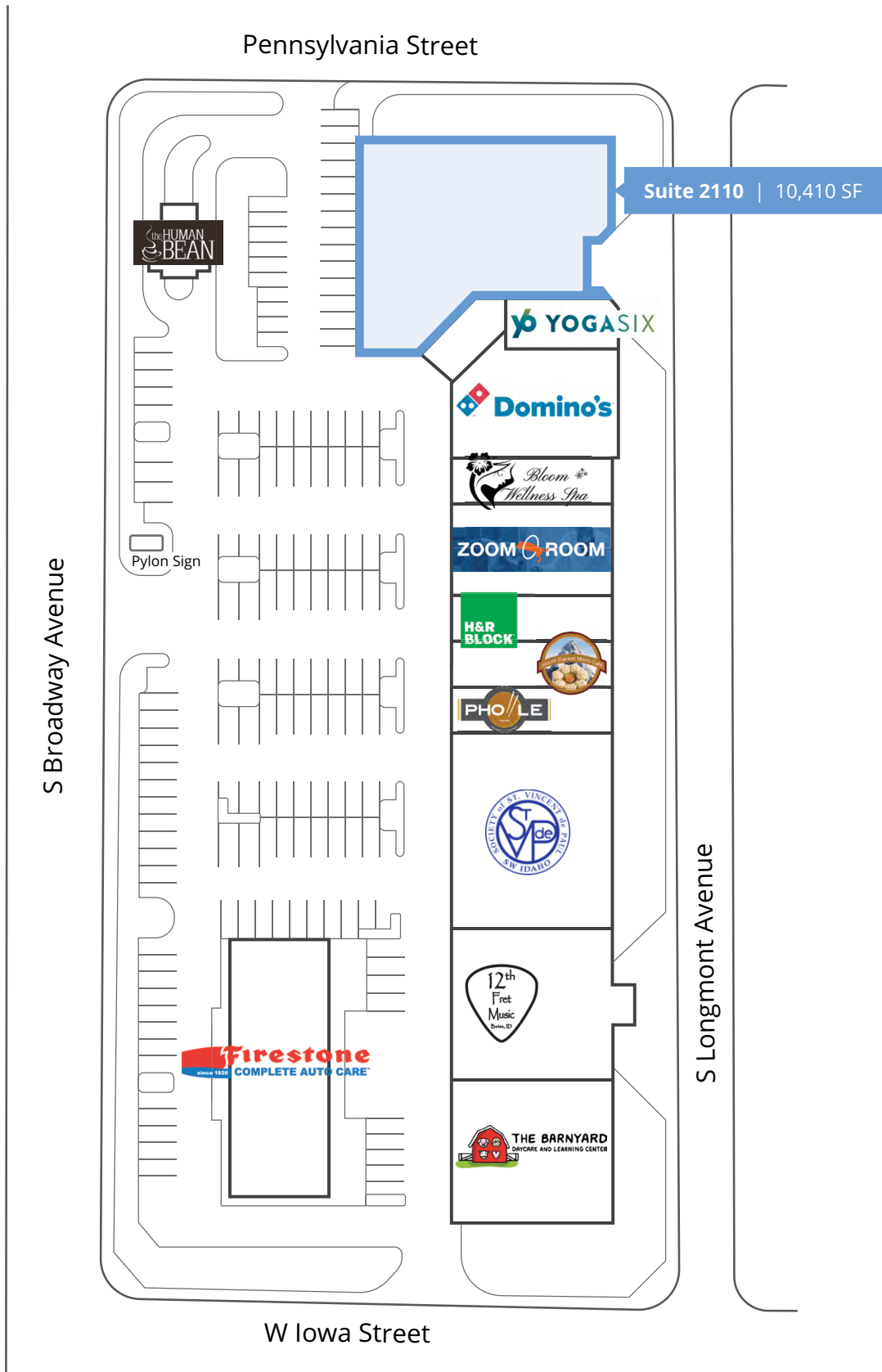
Property Type	Retail Shopping Center
Total Building Size	38,749 SF
Lease Type	NNN
Parking	Ample
Access	Contact agents for info

Space Available

Suite	Size	Rate
2110	10,410 SF	Contact agents



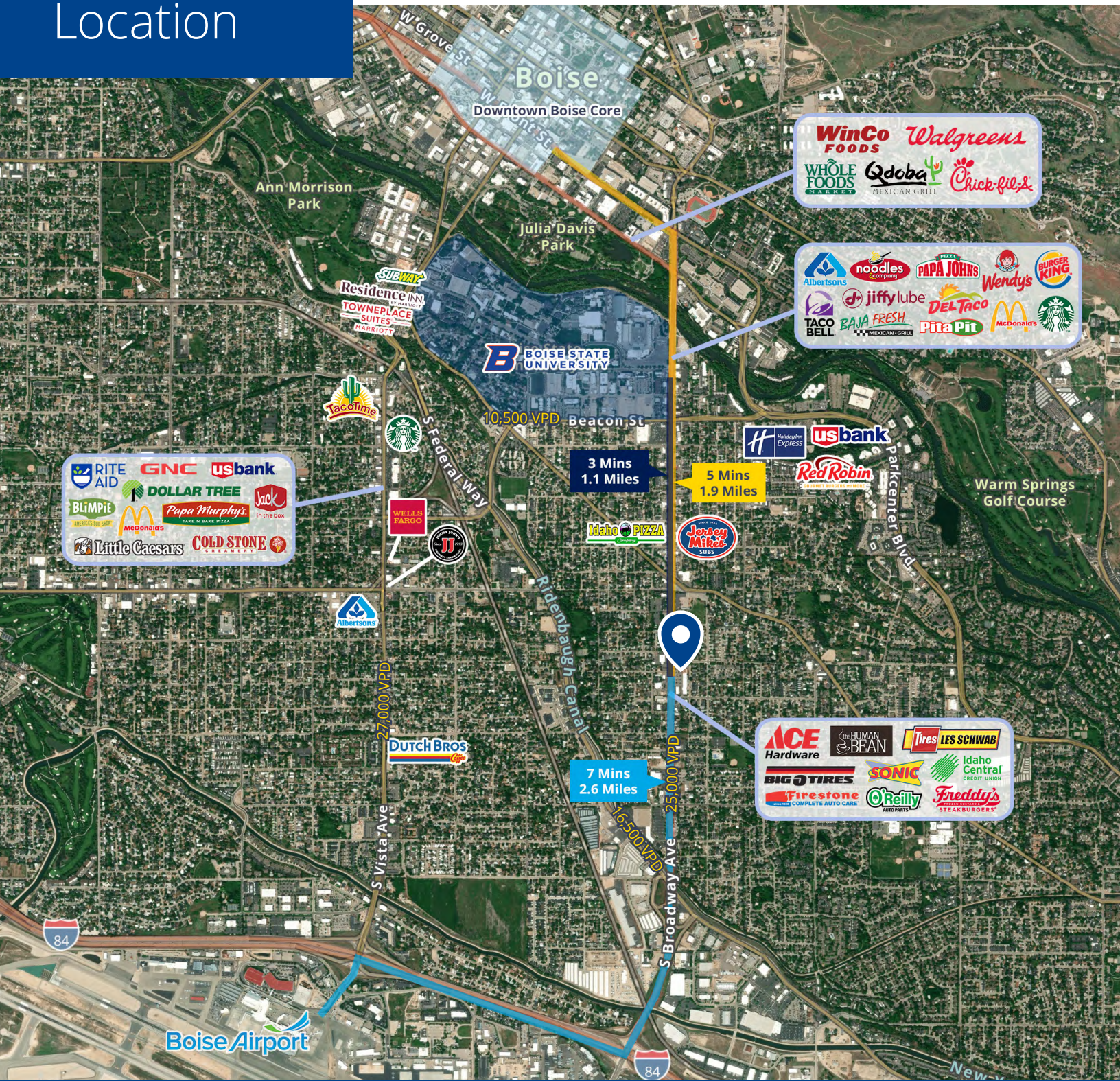
Site Plan



Location

Google Map

Street View



Demographics



755 West Front Street, Suite 300
 Boise, Idaho 83702
 +1 208 345 9000
 colliers.com/idaho

	1 Miles	3 Miles	5 Miles
Population	16,375	81,521	151,847
Households	7,715	37,066	65,959
Avg. HH Income	\$80,061	\$98,821	\$105,775