



CENTENE PLAZA B



+/- 55,332 SF

7700 FORSYTH BOULEVARD | CLAYTON, MISSOURI 63105

A WORLD CLASS EXPERIENCE

Unmatched Amenities

From terrace dining to world-class facilities, wellness and cuisine, the LEED certified Centene Plaza B puts everything your workforce needs within convenient reach.





Superior Design

Designed with innovation in mind, Centene Plaza B is the seamless fusion of the most cutting-edge architectural achievements in sustainability, technology, and engineering.



Premier Location

Ideally located in the heart of vibrant downtown Clayton, Centene Plaza B offers unparalleled access to St. Louis' top chefs, hotels, businesses, and neighborhoods.





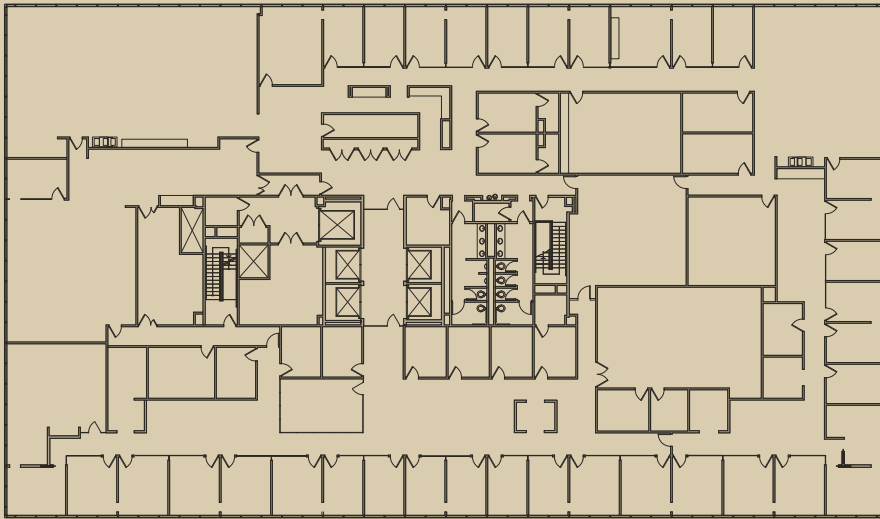
redefining workplace environment

- Parking Ratio: 4.0 per 1,000 SF
- Floor to ceiling glass providing maximum light & views
- Outdoor Plaza: Tree lined amenities plaza with fire pit & 60 foot long waterfall
- On-site full service cafe operated by Guckenheimer
- 270 seat auditorium
- On-site banking & ATM
- Numerous amenities within easywalking distance including restaurants, retail shops, banking & hotels
- On-site security

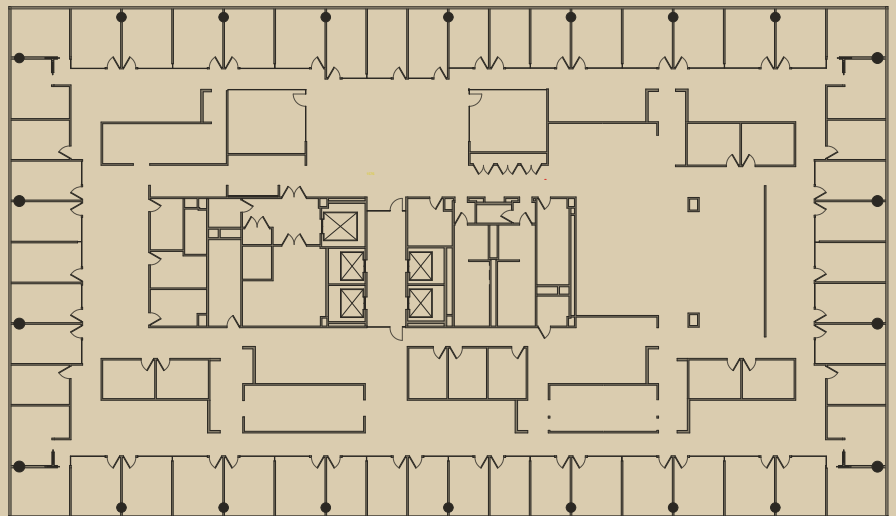
ASKING RATE: \$45.00/SF, FULL SERVICE

TAKING CLAYTON TO NEW HEIGHTS





14TH FLOOR
27,666 RSF
AVAILABLE



15TH FLOOR
27,666 RSF
AVAILABLE

EXCEPTIONAL RETAIL EXPERIENCE

Centene Plaza Campus features a pedestrian-friendly business district with open, public green spaces. Retail shops and innovative architecture and artwork create a unique setting in the heart of Clayton.





Building Retail



discover what it's like at the center of it all



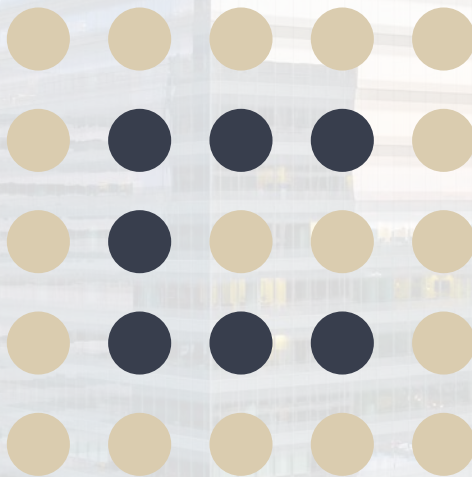


32 nearby restaurants

6 nearby exercise facilities & gyms

15 minutes to airport

4 hotels in walking distance



Jim Mosby
Vice Chair
314 746 0316
jim.mosby@cushwake.com

Danielle Grubbs
Senior Director
314 925 3175
danielle.grubbs@cushwake.com

Paddy Mullen
Senior Director
314 925 3178
paddy.mullen@cushwake.com

 **CUSHMAN &
WAKEFIELD**
7700 Forsyth Blvd., Suite 1210
St. Louis, MO 63105
314 862 7100
cushmanwakefield.com