

HUNT LN DEVELOPMENT TRACT

PREMIER WESTOVER HILLS LOCATION
San Antonio, Texas 78251 | Bexar County

MEDICAL – HOSPITALITY - RETAIL
FOR SALE – LEASE – BUILD TO SUIT



7719 Wood Hollow Dr
Suite 157
Austin, TX 78731



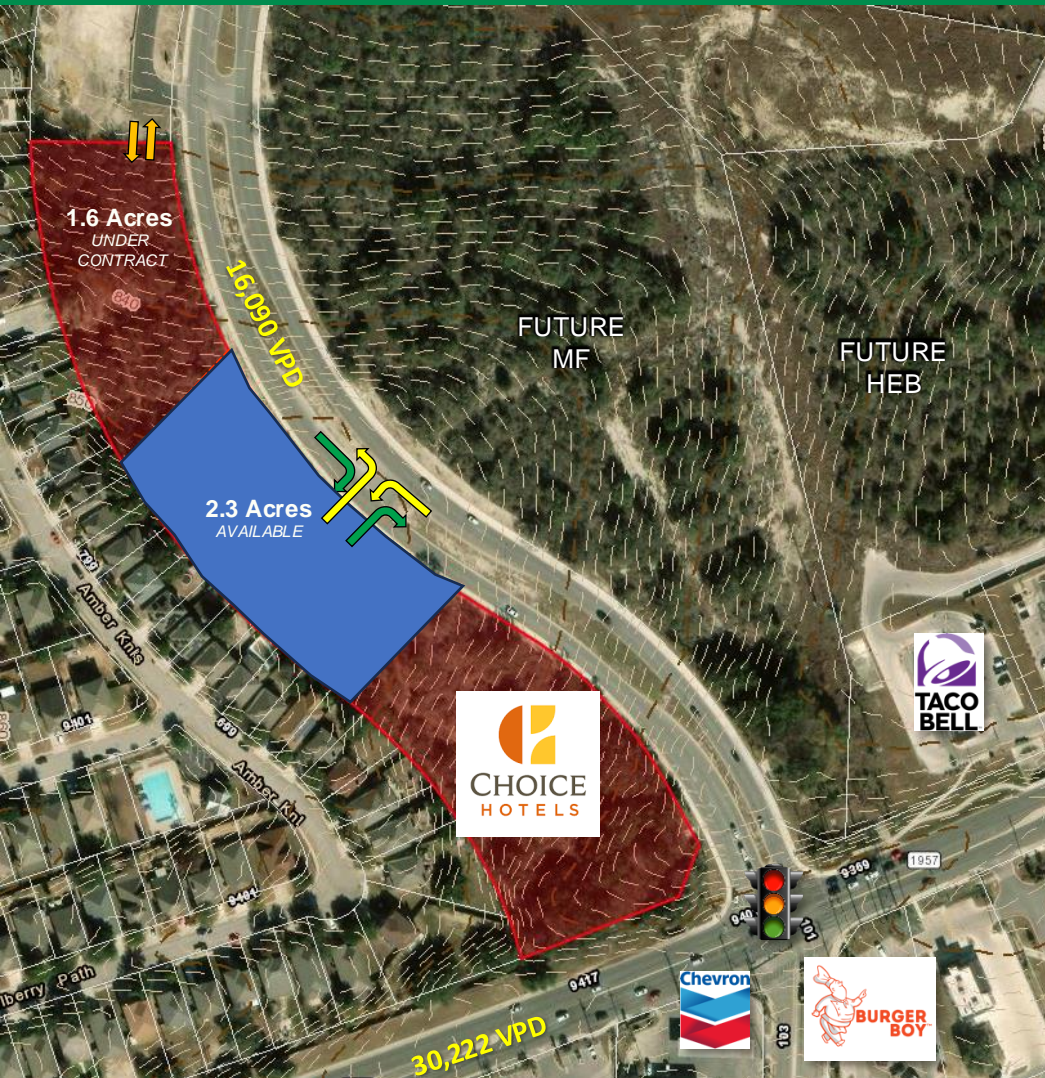
Mike Ogden
512.527.3035
mike@rockspring.com

The information contained herein was obtained from sources deemed reliable; however, Rockspring makes no guarantees, warranties or representations to the completeness or accuracy thereof. The presentation of this real estate information is subject to errors; omissions; change of price; prior sale or lease; or withdrawal without notice. Rockspring, which provides real estate brokerage services, is a division of MCRE Advisors, LLC, a Texas Limited Liability Company.

HUNT LN DEVELOPMENT TRACT

PREMIER WESTOVER HILLS LOCATION
San Antonio, Texas 78251 | Bexar County

MEDICAL – HOSPITALITY - RETAIL
FOR SALE – LEASE – BUILD TO SUIT



SIZE

2.7 Acres (SOLD)
1.6 Acres (Under Contract)
2.3 Acres (Available)

PRICING:

Call for Pricing

UTILITIES:

Water – SAWS line available
Sewer – SAWS line available

ACCESS:

+/- 1,250 ft frontage on Hunt Ln with **direct access** to Hunt Ln, TX 151, and Potranco Rd

Joint access easement with neighboring development

ZONING:

C-3

HIGHLIGHTS:

- Across from Brand New VA Hospital
- Highly **Desirable** Westover Hills Submarket
- Surrounded by **Major Employers** with +100k daily employees
- Largest Industries include:
 - Retail & Entertainment
 - Healthcare
 - Finance & Insurance
 - Education
 - Tech
 - Government
- **Booming Residential Market**

7719 Wood Hollow Dr
Suite 157
Austin, TX 78731



Mike Ogden
512.527.3035
mike@rockspring.com

The information contained herein was obtained from sources deemed reliable; however, Rockspring makes no guarantees, warranties or representations to the completeness or accuracy thereof. The presentation of this real estate information is subject to errors; omissions; change of price; prior sale or lease; or withdrawal without notice. Rockspring, which provides real estate brokerage services, is a division of MCRE Advisors, LLC, a Texas Limited Liability Company.

HUNT LN DEVELOPMENT TRACT

PREMIER WESTOVER HILLS LOCATION
San Antonio, Texas 78251 | Bexar County

MEDICAL – HOSPITALITY - RETAIL
FOR SALE – LEASE – BUILD TO SUIT



7719 Wood Hollow Dr
Suite 157
Austin, TX 78731



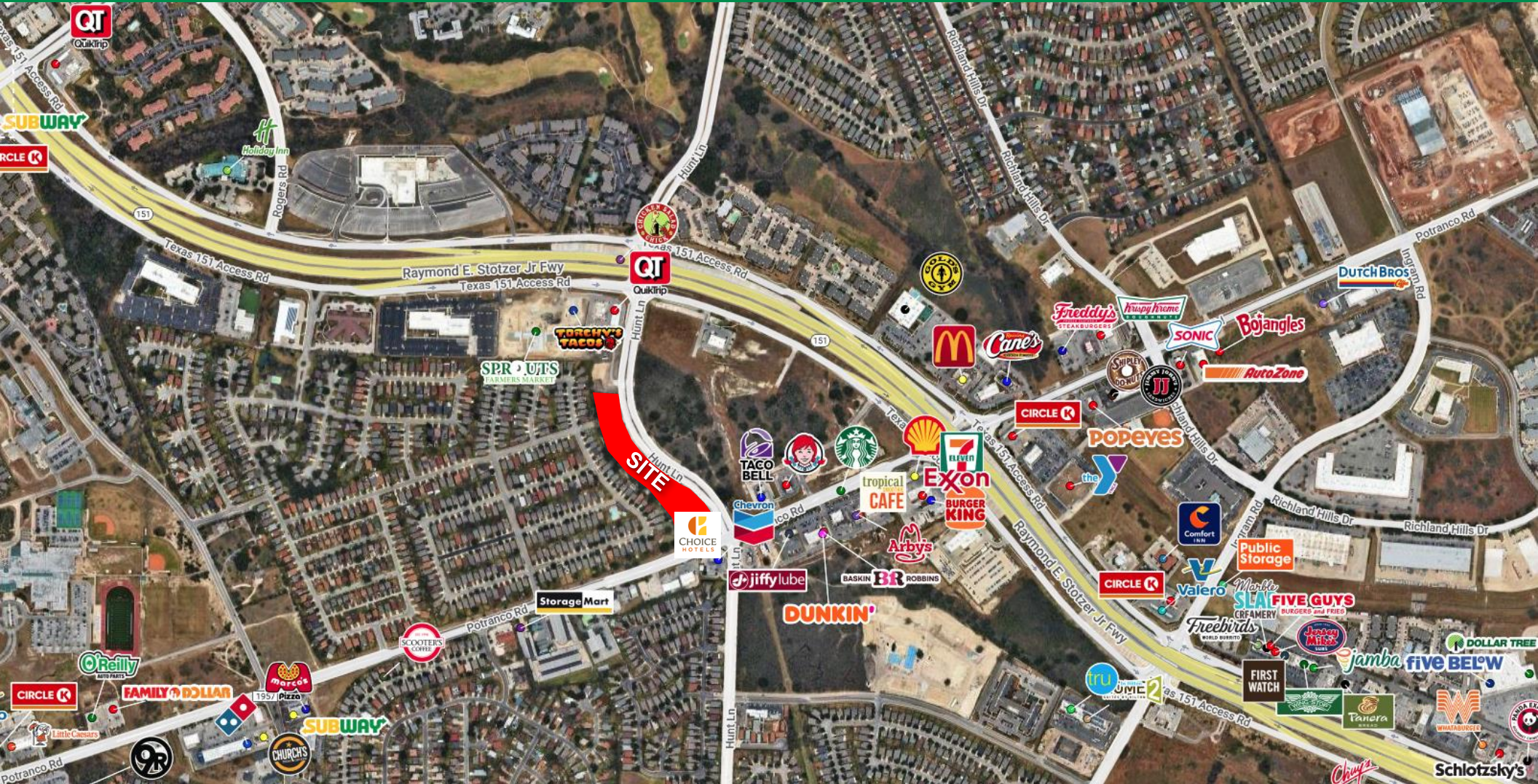
Mike Ogden
512.527.3035
mike@rockspring.com

The information contained herein was obtained from sources deemed reliable; however, Rockspring makes no guarantees, warranties or representations to the completeness or accuracy thereof. The presentation of this real estate information is subject to errors; omissions; change of price; prior sale or lease; or withdrawal without notice. Rockspring, which provides real estate brokerage services, is a division of MCRE Advisors, LLC, a Texas Limited Liability Company.

HUNT LN DEVELOPMENT TRACT

PREMIER WESTOVER HILLS LOCATION
San Antonio, Texas 78251 | Bexar County

**MEDICAL – HOSPITALITY - RETAIL
FOR SALE – LEASE – BUILD TO SUIT**



7719 Wood Hollow Dr
Suite 157
Austin, TX 78731



Mike Ogden
512.527.3035
mike@rockspring.com

The information contained herein was obtained from sources deemed reliable; however, Rockspring makes no guarantees, warranties or representations to the completeness or accuracy thereof. The presentation of this real estate information is subject to errors; omissions; change of price; prior sale or lease; or withdrawal without notice. Rockspring, which provides real estate brokerage services, is a division of MCRE Advisors, LLC, a Texas Limited Liability Company.

HUNT LN DEVELOPMENT TRACT

PREMIER WESTOVER HILLS LOCATION
San Antonio, Texas 78251 | Bexar County

MEDICAL – HOSPITALITY - RETAIL
FOR SALE – LEASE – BUILD TO SUIT



7719 Wood Hollow Dr
Suite 157
Austin, TX 78731



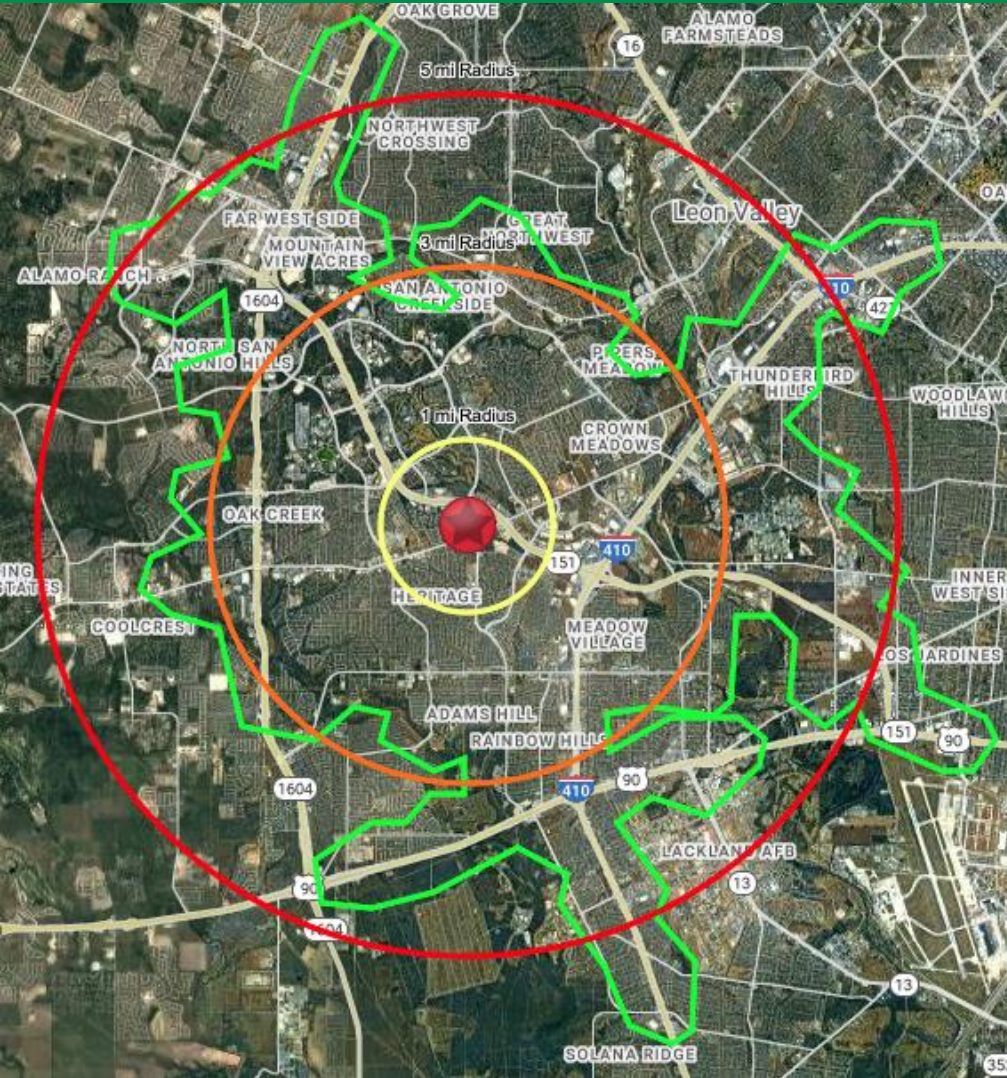
Mike Ogden
512.527.3035
mike@rockspring.com

The information contained herein was obtained from sources deemed reliable; however, Rockspring makes no guarantees, warranties or representations to the completeness or accuracy thereof. The presentation of this real estate information is subject to errors; omissions; change of price; prior sale or lease; or withdrawal without notice. Rockspring, which provides real estate brokerage services, is a division of MCRE Advisors, LLC, a Texas Limited Liability Company.

TX 151 DEVELOPMENT TRACT

PREMIER WESTOVER HILLS LOCATION
San Antonio, Texas 78251 | Bexar County

**MEDICAL – HOSPITALITY - RETAIL
FOR SALE – LEASE – BUILD TO SUIT**



DEMOGRAPHIC SNAPSHOT

| | 1 Mile | 3 Mile | 5 Mile | 10 Min Drivetime |
|-------------------|----------|----------|----------|------------------|
| Population | 22,579 | 148,327 | 344,442 | 240,544 |
| Households | 8,054 | 52,219 | 113,866 | 84,060 |
| Average HH Income | \$97,621 | \$97,386 | \$99,227 | \$92,505 |
| Labor Population | 14,519 | 99,883 | 232,436 | 159,148 |
| Unemployment Rate | 1.3% | 3.4% | 3.2% | 3.3% |

7719 Wood Hollow Dr
Suite 157
Austin, TX 78731



Mike Ogden
512.527.3035
mike@rockspring.com

The information contained herein was obtained from sources deemed reliable; however, Rockspring makes no guarantees, warranties or representations to the completeness or accuracy thereof. The presentation of this real estate information is subject to errors; omissions; change of price; prior sale or lease; or withdrawal without notice. Rockspring, which provides real estate brokerage services, is a division of MCRE Advisors, LLC, a Texas Limited Liability Company.