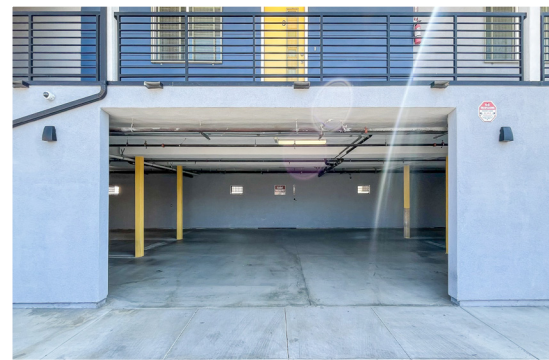


1271 W 39th Pl
Los Angeles, CA 90037

Just Listed

\$4,500,000



ABOUT THIS PROPERTY

Newer custom townhouse style apartments with so many upgrades. Drive up and be taken in by the modern chic building. Enjoy the modern amenities with a spacious floor plan. Located just a few blocks from USC, Exposition Park, the Coliseum Natural History Museum, LA Memorial Coliseum and a short commute to DTLA. This location is so close to USC Campus and just a short commute into DTLA.

- Two story units.
- Energy Efficient Central AC/Heat system.
- Balcony.
- Water resistant vinyl wood floors.
- Gray Shaker cabinets with quartz countertops.
- LED energy efficient recessed lighting.
- In unit stackable washer and dryer. Except the one bedroom.
- Stainless steel appliances included (refrigerator, stove & dishwasher).
- Two gated/secure parking spaces.
- Gated secure building with cameras.
- Spectrum Internet (200mps) & Cable included for tenants.
- Pet friendly.
- Common dog friendly play area around the property.



AMY WANG
(626) 625-5575
amy@requeen.com
BRE#01349731

