

For Lease – Ocean View Professional Office

35 Lunalilo Building

35 Lunalilo Street, Wailuku, Maui, HI 96793



PROPERTY HIGHLIGHTS

35 Lunalilo is a professional office building with panoramic ocean views from all 4 floors in turnkey condition. One of the few buildings in Wailuku with free private parking. Units have configurations for multiple exam rooms or offices with a break room. Conveniently located at the top of Kaahumanu Avenue just above Baldwin High School.

- Unit #401 2,757 SF of prime ocean view penthouse office space.
- Ground floor Unit #102 2,680 SF with 6 private offices in turnkey condition
- Convenient location across from Maui Lani Shopping Center shops and restaurants
- Elevator access and central air conditioning
- Minutes to downtown Wailuku and federal, state and county offices

CONTACT

Brian C. Rose, R (S)

brian@kokuarealty.com

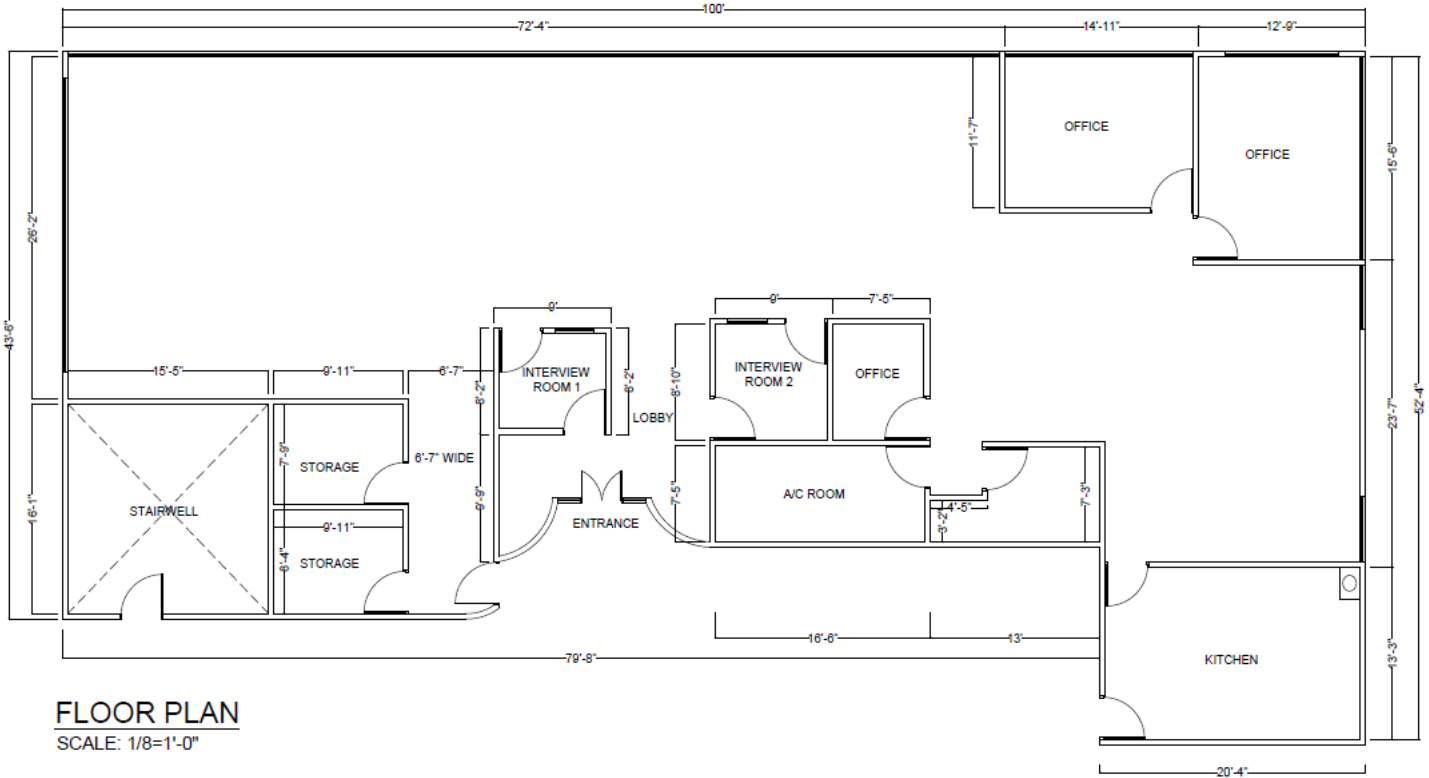
808.283.3492

This information supplied herein is from sources we deem reliable. It is provided without any representations, warranty, or guarantee, expressed or implied as to its accuracy. Prospective Buyer or Tenant should conduct an independent investigation and verification of all matters deemed to be material, including, but not limited to, statements of income and expenses. References to square footage are approximate. Terms of sale or lease and availability are subject to change or withdrawal without notice. CONSULT YOUR ATTORNEY, ACCOUNTANT, OR OTHER PROFESSIONAL ADVISOR.

For Lease – Ocean View Professional Office

35 Lunalilo Building

35 Lunalilo Street, Wailuku, Maui, HI 96793



CONTACT

Brian C. Rose, R (S)
brian@kokuarealty.com
808.283.3492

This information supplied herein is from sources we deem reliable. It is provided without any representations, warranty, or guarantee, expressed or implied as to its accuracy. Prospective Buyer or Tenant should conduct an independent investigation and verification of all matters deemed to be material, including, but not limited to, statements of income and expenses. References to square footage are approximate. Terms of sale or lease and availability are subject to change or withdrawal without notice. CONSULT YOUR ATTORNEY, ACCOUNTANT, OR OTHER PROFESSIONAL ADVISOR.

For Lease – Ocean View Professional Office

35 Lunalilo Building

35 Lunalilo Street, Wailuku, Maui, HI 96793



DEMOGRAPHICS

	1 Mile	3 Miles	5 Miles
Total Population	15,189	52,951	53,578
Total Households	5,282	15,770	15,977
Average HH Income	\$90,362	\$103,406	\$103,659

- *Demographic data derived from 2010 US Census*

This information supplied herein is from sources we deem reliable. It is provided without any representations, warranty, or guarantee, expressed or implied as to its accuracy. Prospective Buyer or Tenant should conduct an independent investigation and verification of all matters deemed to be material, including, but not limited to, statements of income and expenses. References to square footage are approximate. Terms of sale or lease and availability are subject to change or withdrawal without notice. CONSULT YOUR ATTORNEY, ACCOUNTANT, OR OTHER PROFESSIONAL ADVISOR.