

ATTENTION BROKERS

# FOR LEASE

## Dunbar Avenue Industrial Park

798 NW DUNBAR AVENUE  
TROUTDALE, OR 97060

**Workspace**  
NATION

INDUSTRIAL SPACES BUILT FOR BUSINESS SUCCESS

## Warehouse Suites

Conveniently Located Near Airport  
with Direct Access to I-84

WorkspaceNation.com

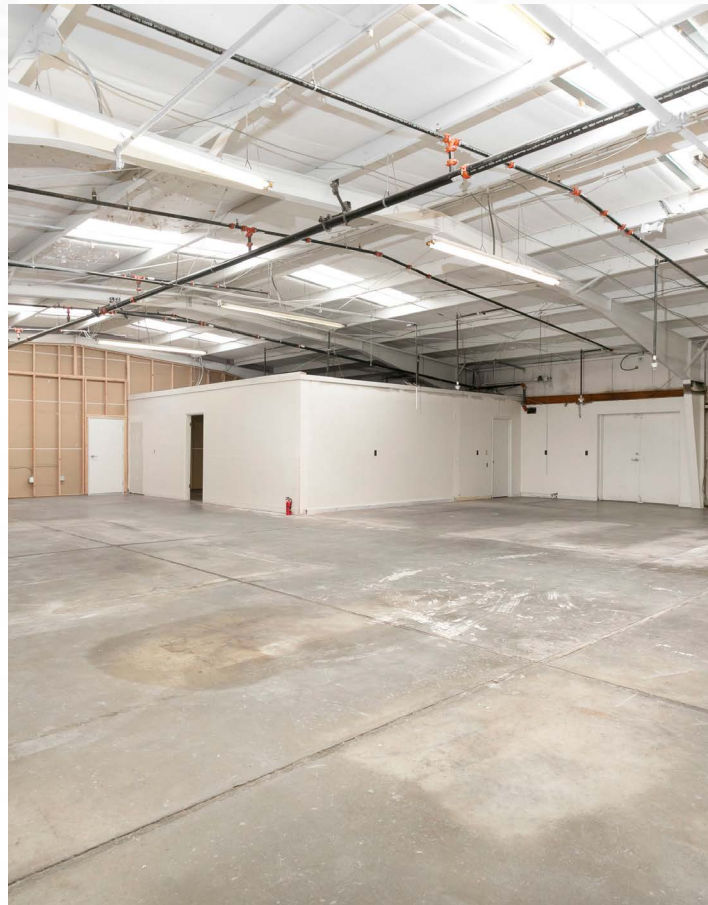


Welcome to **Dunbar Avenue Industrial Park**, a **Workspace Nation™** signature property designed specifically for manufacturing and service businesses ready to grow.

### PROPERTY OVERVIEW

- Industrial warehouse suites ranging in size from 1,215 RSF to 8,907 RSF.
- Metal butler-style, insulated, pitched-roof structures
- 11' - 13' ceilings with wide spans
- The property has been recently renovated.

**The Dunbar Avenue Industrial Park is fully fenced with an automated gate entry.**







## Dunbar Avenue Industrial Park

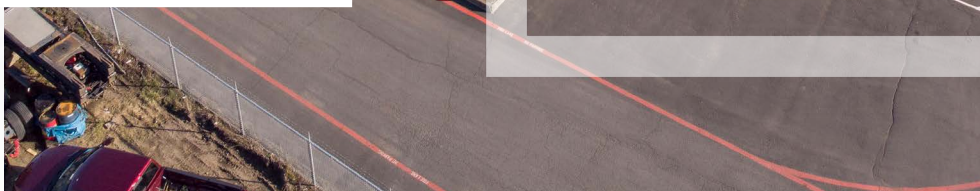
798 NW DUNBAR AVENUE  
TROUTDALE, OR 97060

Is your client ready to join the  
**Workspace Nation™**?

**Let's talk today.**

LeasingTeam@GridPropertyManagement.com  
888-673-9949

Individual suite information is available at  
WorkspaceNation.com



WAREHOUSE SPACE IDEAL FOR LIGHT  
MANUFACTURING AND PRODUCTION

The **Workspace Nation™** portfolio is managed exclusively by Grid, a property management firm specializing in commercial and industrial properties.

